

## GEODETIC CONTROL INFORMATION

### HVCTRL #1

LOWER AZ MK  
 NORTH = 556424.73  
 EAST = 1464112.91  
 ELEV. = 368.36

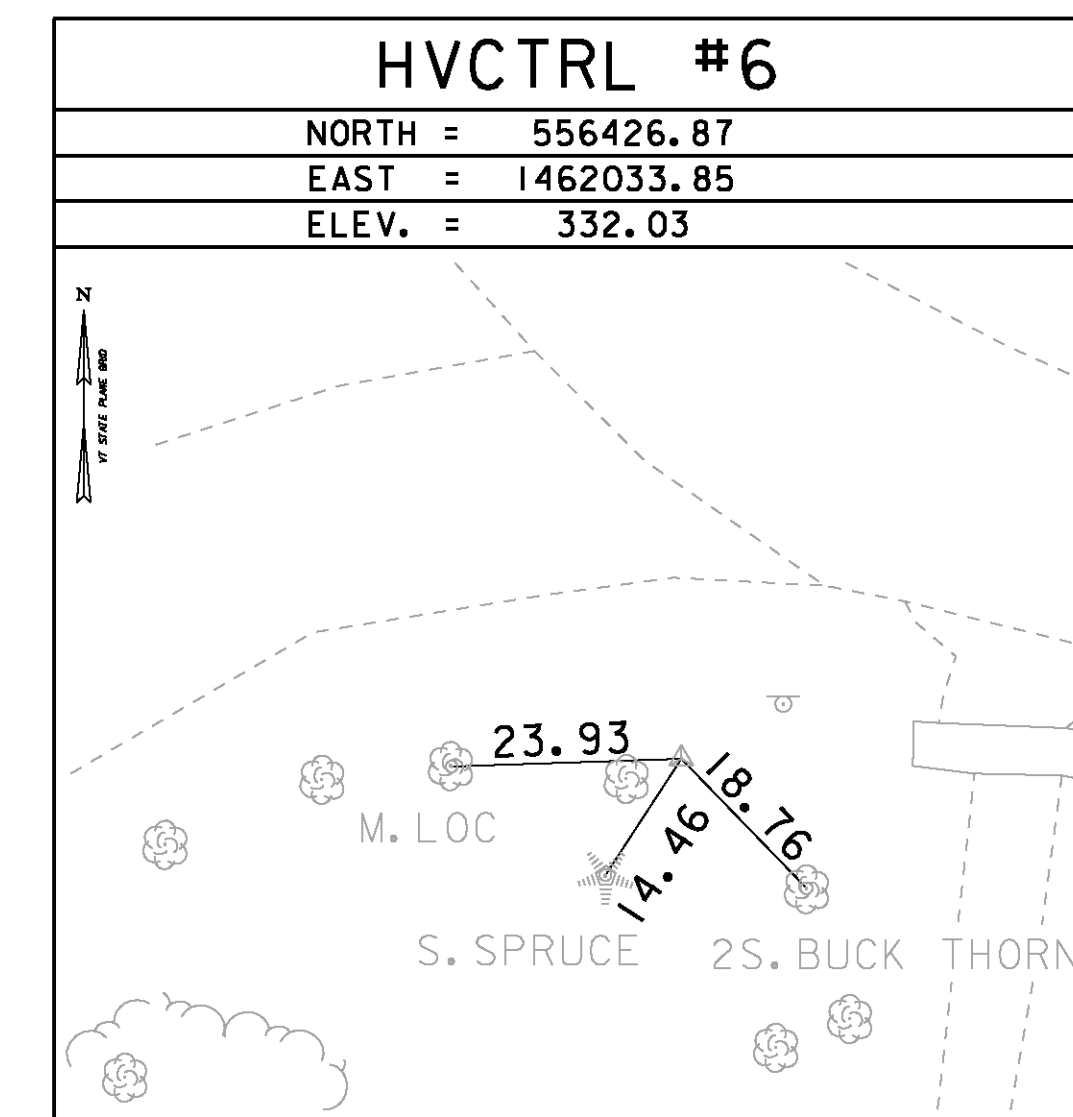
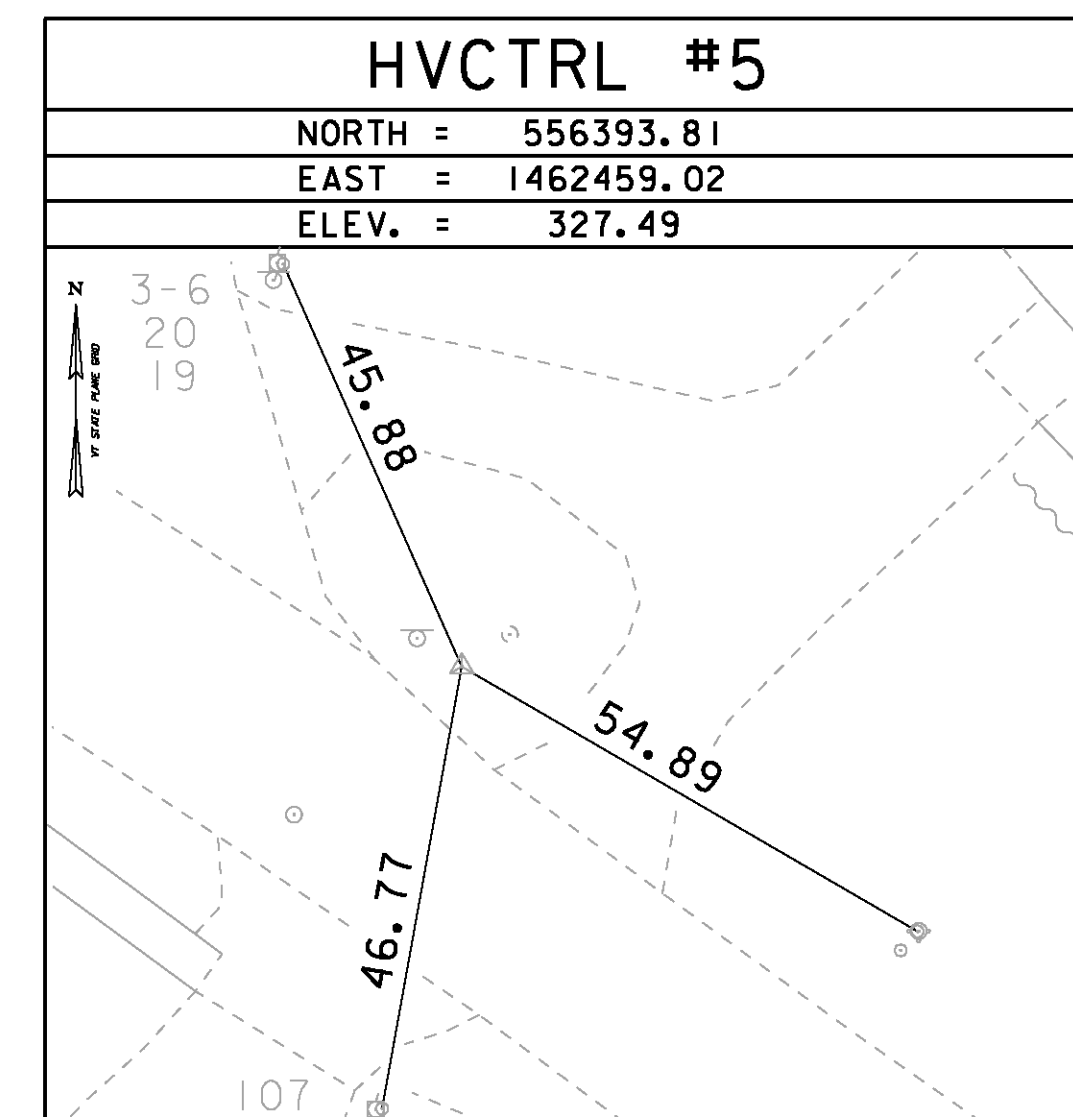
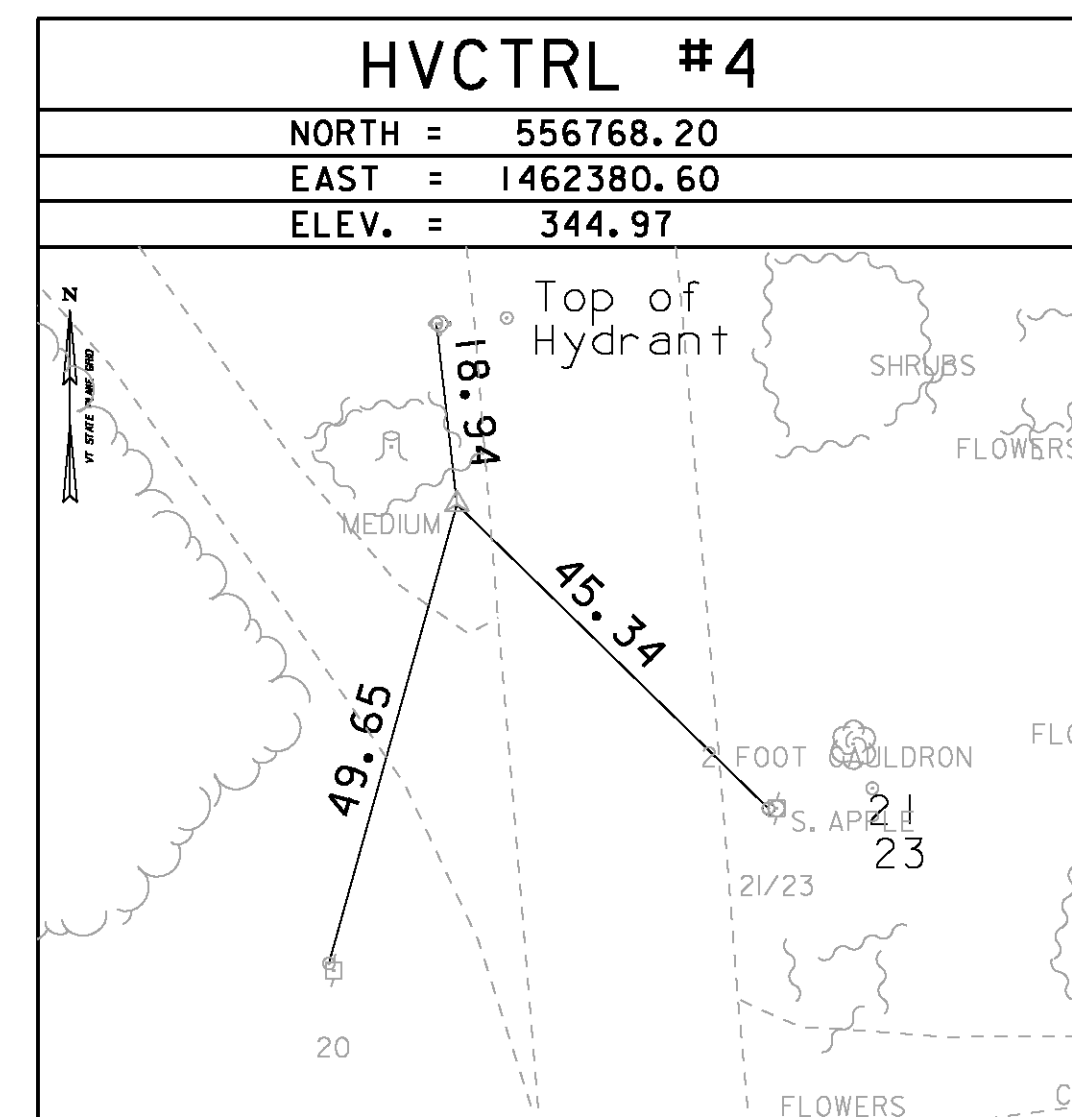
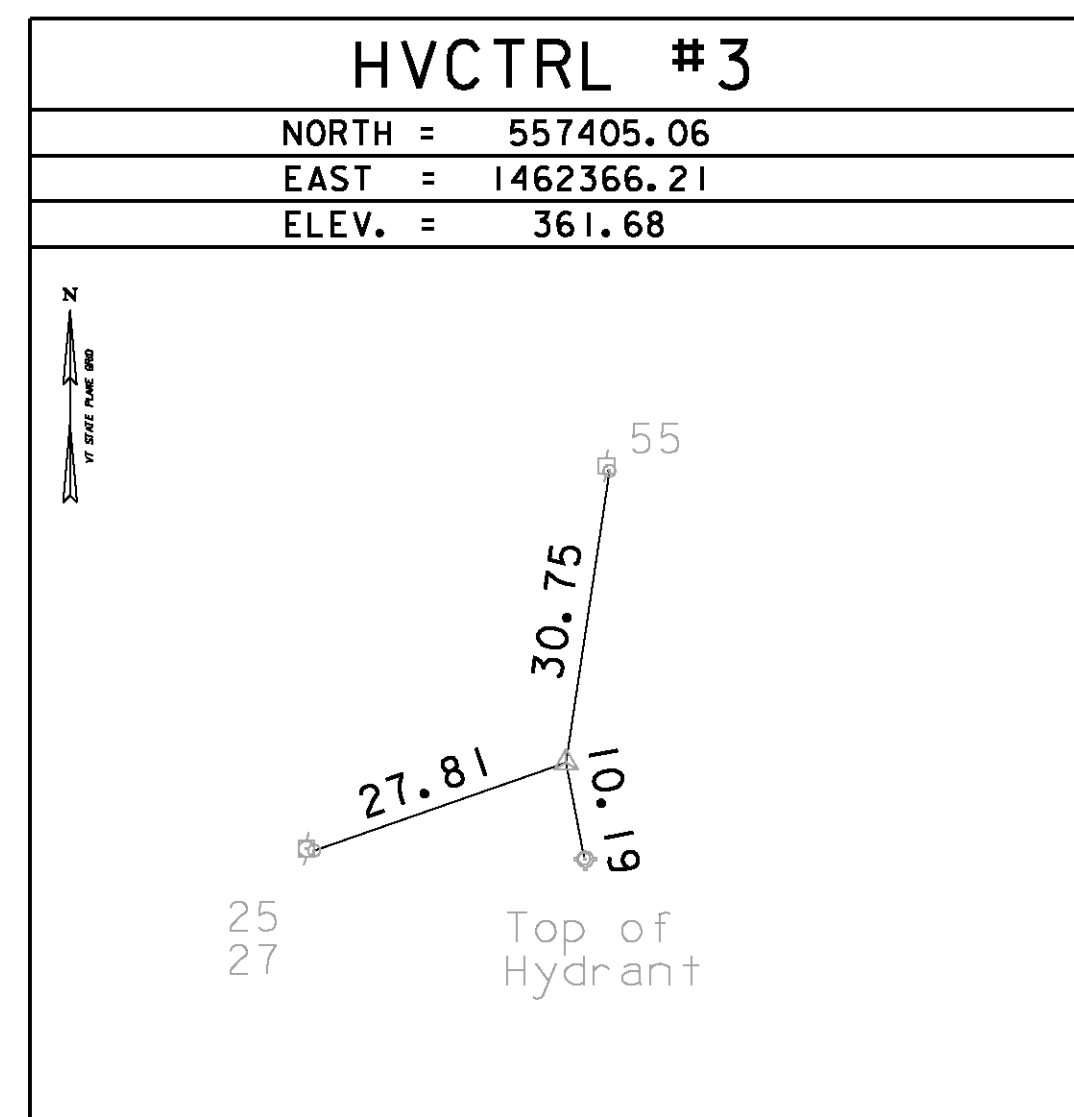
DESCRIBED BY VT PUBLIC SERVICE 1991 GENERAL LOCATION, EXCHANGE STREET, MIDDLEBURY, VERMONT. OWNERSHIP, CENTRAL VERMONT PUBLIC SERVICE CORPORATION. TO REACH, FROM THE MIDDLEBURY TOWN GREEN TAKE SEYMOUR STREET NORTHWEST FOR 0.3 MI (0.5 KM) TO AN INTERSECTION, CONTINUE NORTHWEST ON EXCHANGE STREET FOR ABOUT 0.6 MI (1.0 KM). THE MARK IS ON THE EAST SIDE OF EXCHANGE STREET AND NEXT TO TRANSMISSION POLE 51. STATION MARK IS 1.5 INCH DIAMETER BRASS DISK SET IN A 10 INCH DIAMETER CONCRETE MONUMENT FLUSH WITH GROUND. IT IS 29 FT (8.8 M) N15E TRANSMISSION POLE 51, 35 FT (10.7 M) N62W SEWER MANHOLE, 54 FT (16.5 M) N77W CENTERLINE OF EXCHANGE STREET, 2 FT (0.6 M) WEST TO WITNESS POST.

### HVCTRL #2

LOWER  
 NORTH = 557346.16  
 EAST = 1462673.27  
 ELEV. = 382.32

DESCRIBED BY VT PUBLIC SERVICE 1991 GENERAL LOCATION, SEYMOUR STREET EXTENSION, MIDDLEBURY. OWNERSHIP, CENTRAL VERMONT PUBLIC SERVICE CORPORATION. TO REACH, FROM ROUTE 7 NORTH IN MIDDLEBURY, GO PAST THE MIDDLEBURY INN. TURN LEFT AT THE END OF THE TOWN GREEN (CONGRAGATIONAL CHURCH IS ON YOUR RIGHT). GO ACROSS MAIN STREET TO SEYMOUR STREET, FOLLOW SEYMOUR STREET TO ITS END, TURN LEFT AND GO THROUGH THE UNDERPASS. TURN RIGHT AND FOLLOW ROAD TO COVERED BRIDGE. TURN RIGHT AT THE BRIDGE ONTO SEYMOUR STREET EXTENSION. TURN RIGHT ONTO THE NEXT STREET, AT TOP OF HILL TURN RIGHT, GO TO END. THE MARK IS TO THE RIGHT UP ON A LEDGE. STATION MARK IS INCH DIAMETER BRASS DISK, SET IN LEDGE NEXT TO TRANSMISSION POLE IT IS 13 FT (4.0 M) N 70 E TRANSMISSION POLE 60, 9.5 FT (2.9 M) S 80 E WITNESS POST, 60 FT (18.3 M) E TO EDGE OF PARKING LOT.

## TRAVERSE TIE INFORMATION



\* MAIN TRAVERSE COMPLETED 03-14-2007 BY L.ORVIS P.C. & G.HITCHCOCK

<b>DATUM</b>	
VERTICAL	NAVD 88
HORIZONTAL	NAD 83 (96)
ADJUSTMENT	COMPASS

PROJECT NAME: MIDDLEBURY-WEYBRIDGE	
PROJECT NUMBER: BHO 1445(33)	
FILE NAME: z06j086t1.dgn	PLOT DATE: 9/20/2011
PROJECT LEADER: M.D.SARGENT	DRAWN BY: R.BULLOCK
DESIGNED BY:	CHECKED BY:
<b>TRAVERSE &amp; GEODETIC CONTROL INFO.</b>	SHEET 11 OF 66