

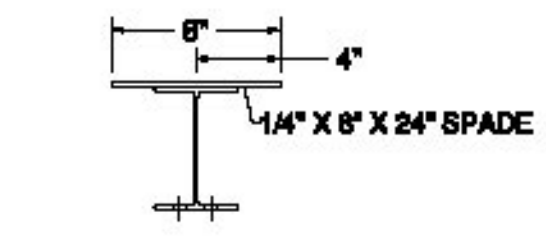
**RECEIVED**

CK'D BY J. Griffin OK'D BY J. Lacroix

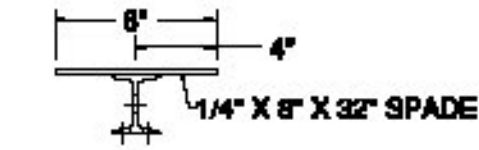
December 19, 2013

RESUBMIT NO Approved  
BY J. Lacroix DATE 1/7/2014

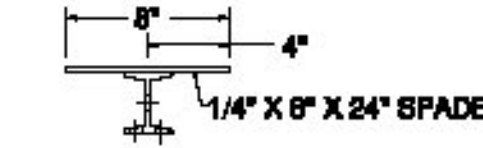
PLAN VIEW



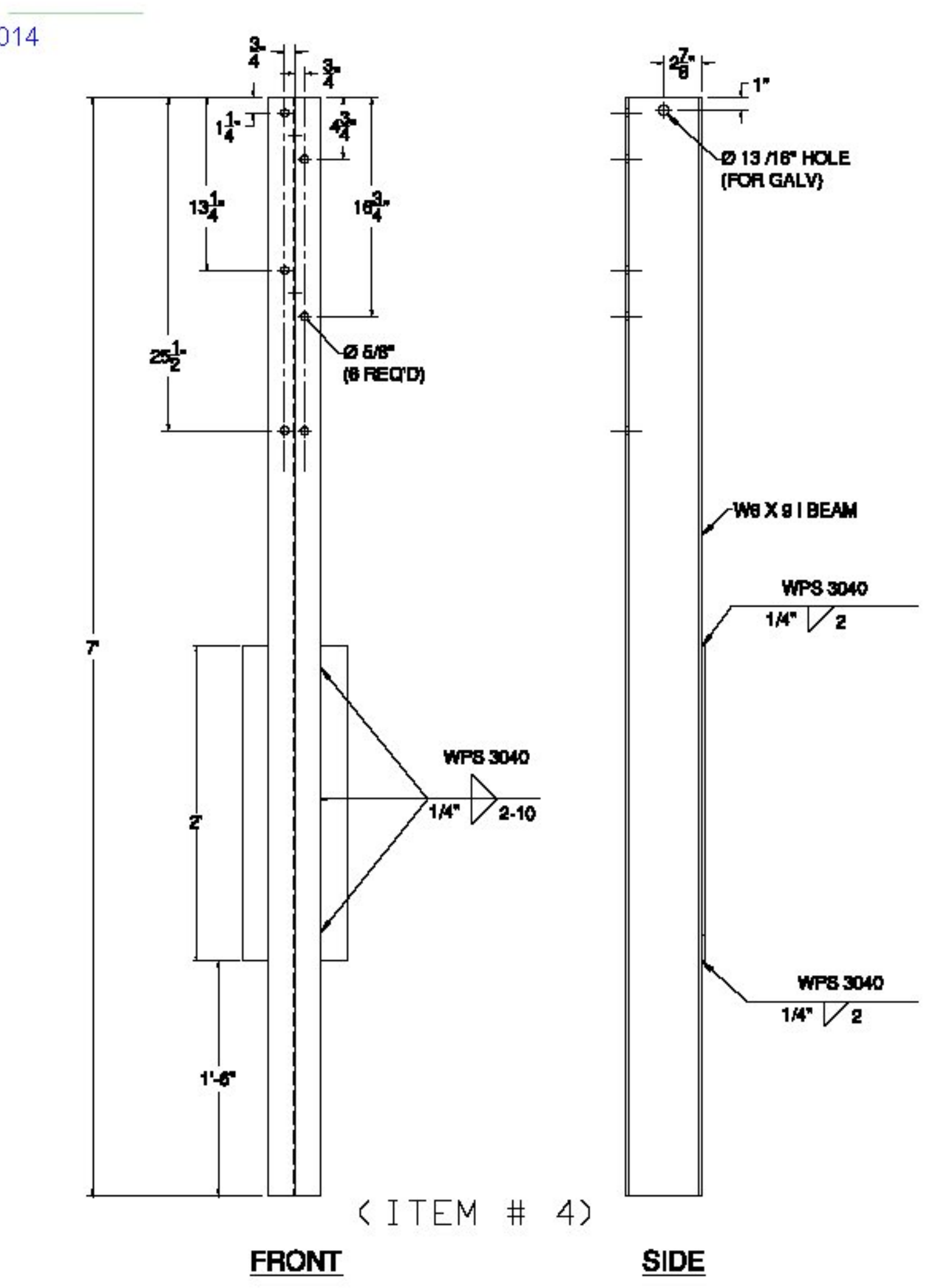
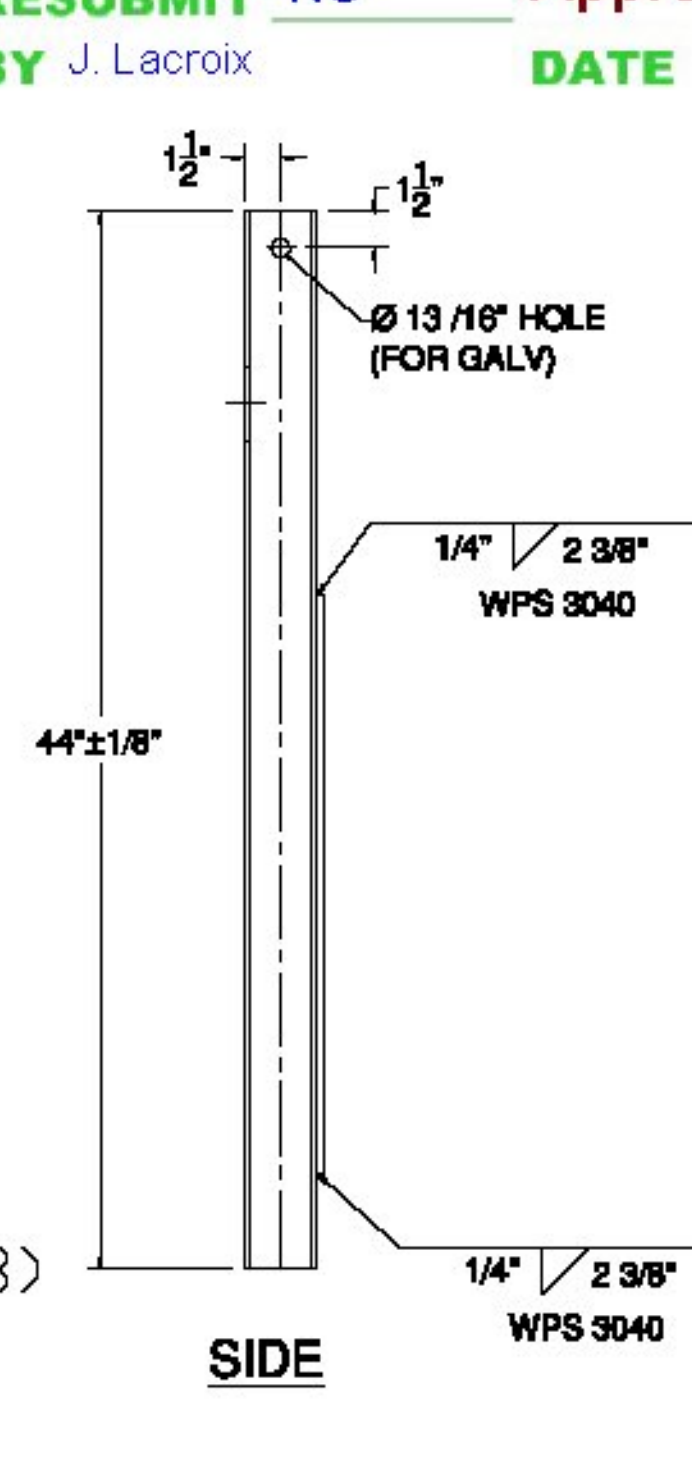
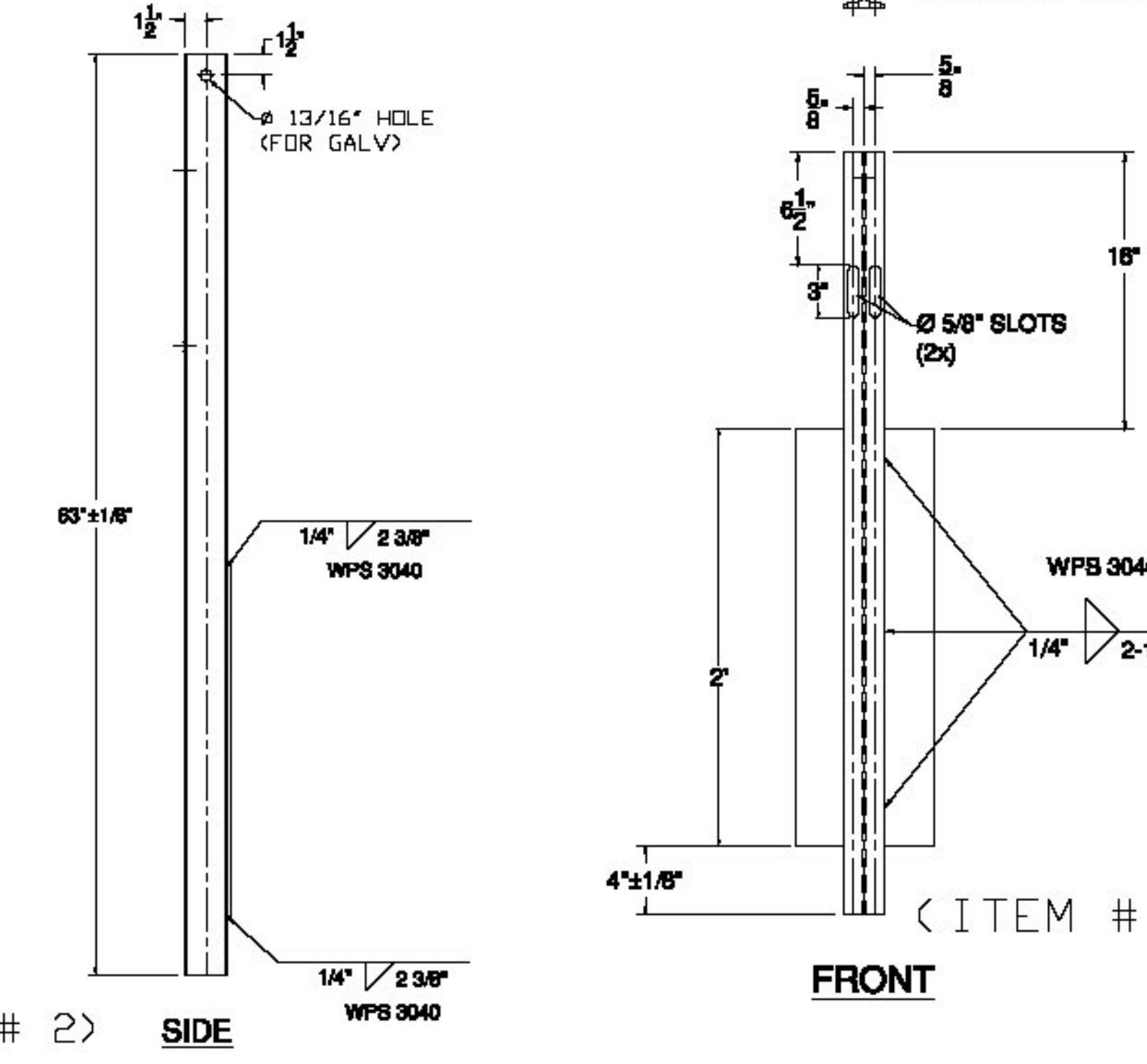
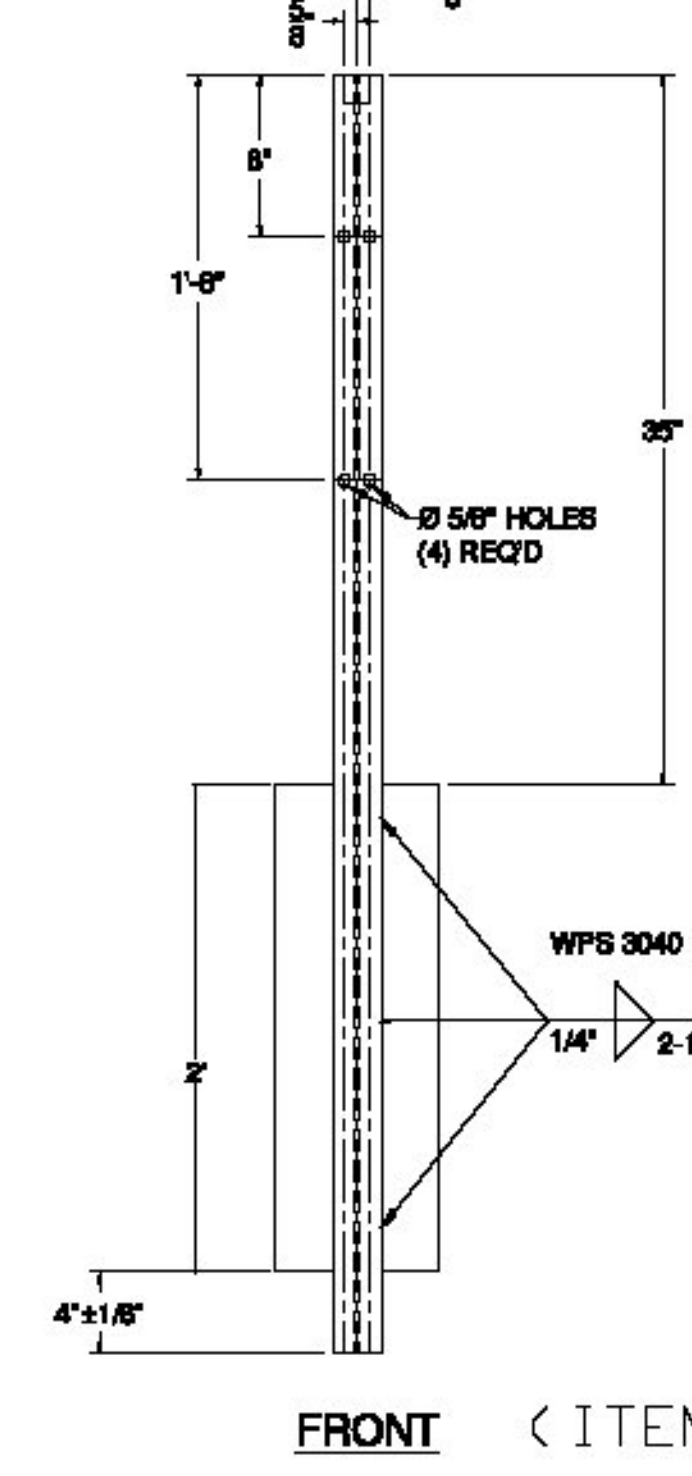
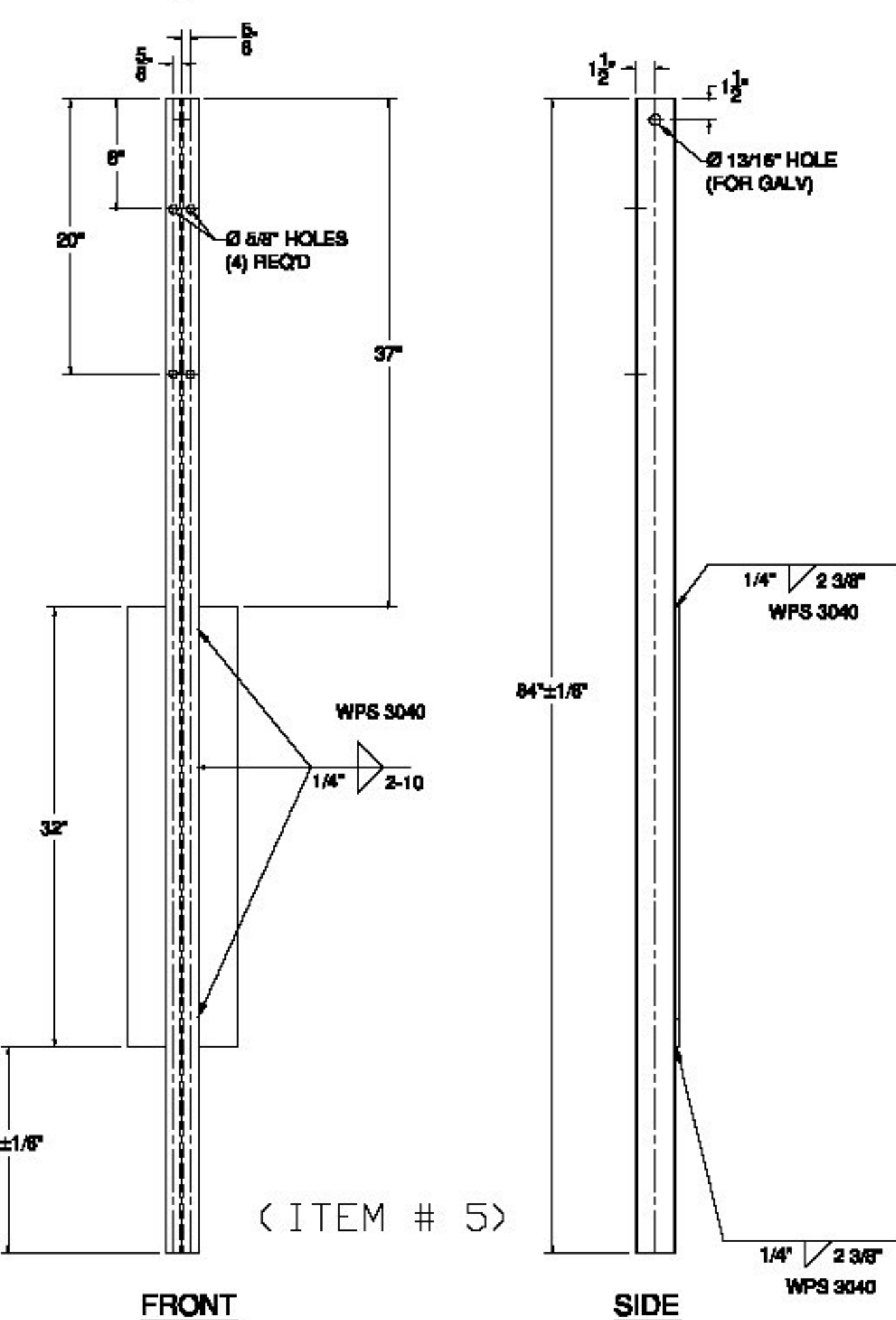
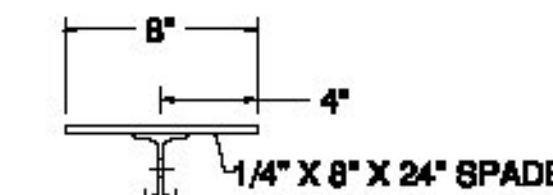
PLAN VIEW



PLAN VIEW



PLAN VIEW



ITEM #	QTY.	COMPONENT #	DESCRIPTION	MATERIAL (ASTM)
2	6	0013.02712	3\"/>	

ITEM #	QTY.	COMPONENT #	DESCRIPTION	MATERIAL (ASTM)
2	6	0013.02712	3\"/>	

ITEM #	QTY.	COMPONENT #	DESCRIPTION	MATERIAL (ASTM)
2	6	0013.02712	3\"/>	

ITEM #	QTY.	COMPONENT #	DESCRIPTION	MATERIAL (ASTM)
2	6	0013.02712	3\"/>	

ITEM #	FUNCTION
19	BOLT RAIL TO SHELF ANGLE (ITEM #10)
20	BOLT SHELF ANGLE (ITEM #S 10 & 11) TO POST
21	BOLT BLOCK-OUTS (ITEM #S 13 & 14) TO HEAVY POST
22	(4) PER SPLICE BAR (ITEM #9)
23	(4) PER SPLICE TUBING (ITEM #S 7 & 8)
24	BOLT RAIL (ITEMS #S 6, 17, & 18) TO BLOCK-OUTS (ITEM #S 13 & 14) (WHERE FASTENED)
25	BOLT DOUBLE BEND SPLICE TUBE (ITEM #12) TO RAIL (ITEM #18) & KICKBACK (ITEM #15) & ITEM #11)

ITEM #: 525.335

F.R. LAFAYETTE, BRISTOL

SHEET 2 OF 4

APPROVED BY:

**GUARD RAIL TO BRIDGE RAIL TRANSITION DETAILS SHEET**  
BRISTOL, BRO 1445 (32), SOUTH STREET, BRIDGE #31  
TOWN OF BRISTOL, ADDISON COUNTY, VERMONT

R	NO.	DATE	DESCRIPTION	BY	R	NO.	DATE	DESCRIPTION	BY
E									
V									

DRAWN	E.P.	11/13/13
CHECKED	D.L.	11/20/13
APPROVED		
SCALE	SCHEMATIC	
DRAWING NO. F.R. LAFAYETTE, BRISTOL		



**ELDERLEE, INC.**  
OAKS CORNERS, NEW YORK 14518  
E-Mail: diong@elderlee.com  
Tel: 315-789-6670 Fax: 315-789-6615

