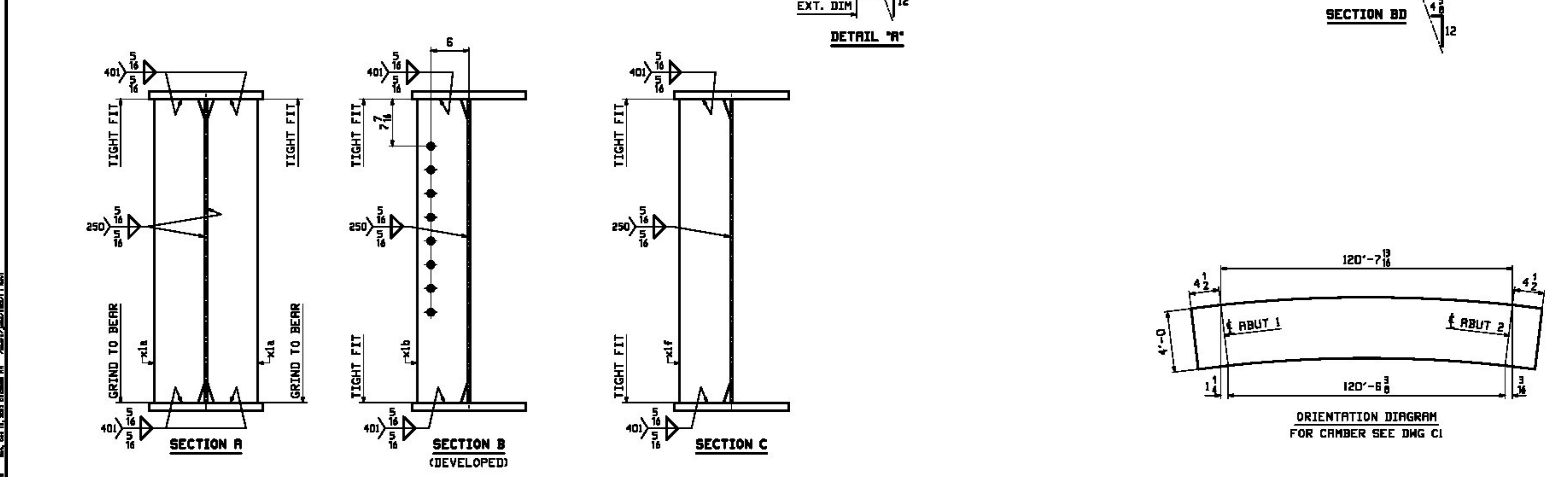
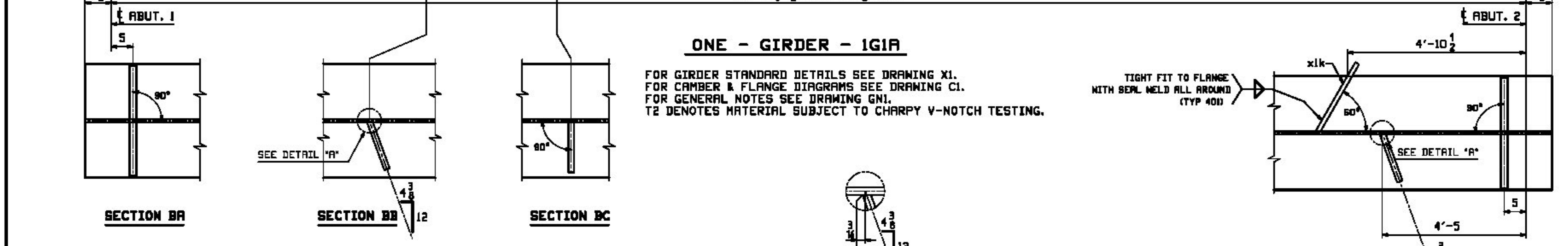


JOB NO.		DRAWING NO.		REV.
504		1		▲
ITEM	QTY	DESCRIPTION	UNIT	REMARKS
1	1	GIRDER		25553
1	1	wa		4851
1	1	wb		5067
1	1	wa		6195
1	1	wb		3100
1	1	wa		6195
1	1	wb		3090
2	4	xla		116
2	5	xlb		54
2	5	xlf		54
2	1	xlk		3



ONE - GIRDER - IGIA

FOR GIRDER STANDARD DETAILS SEE DRAWING X1.
 FOR CAMBER & FLANGE DIAGRAMS SEE DRAWING C1.
 FOR GENERAL NOTES SEE DRAWING GN1.
 T2 DENOTES MATERIAL SUBJECT TO CHARTY V-NOTCH TESTING.

Approved Revise and Resubmit
 Approved as Noted (See Accompanying Letter) Rejected

Hoyle, Tanner
 ASSOCIATES, INC.

Approved by: SSS Date: 12/21/13
 Approved by: MSU Date: 12/21/14

REV.	DATE	REMARKS	DWN	CHK	APVL	SHOP
▲	12/17	APPROVAL COMMENT	JTB	DBH		
0						
MATERIAL:		SURFACE PREP. & PAINT:		HOLES:		SHOP BOLTS:
M270-S0W		SEE DWG GN1		15/16" (UN)		NONE
DESCRIPTION: GIRDER - IGIA						
CASCO BAY STEEL STRUCTURES, INC.						
1 WALLACE AVE.			PHONE (207) 780-6722		TEMBOR 2013	
SOUTH PORTLAND, ME 04106			FAX: (207) 780-6726			
STRUCTURE: BRISTOL - BRIDGE NO. 31			DRAWN: JTB		DATE: 08/14	
VT ROUTE NO. TH 5 (SOUTH STREET)			CHKD: DBH		DATE: 09/07	
OVER NEW HAVEN RIVER						
LOCATION: TOWN OF BRISTOL, VT (ADDISON COUNTY)			JOB NO. 534		DWG NO. 1	
PROJ NO. BRO 1445 (32)						
CUSTOMER: BLOM AND COTE					REV. ▲	