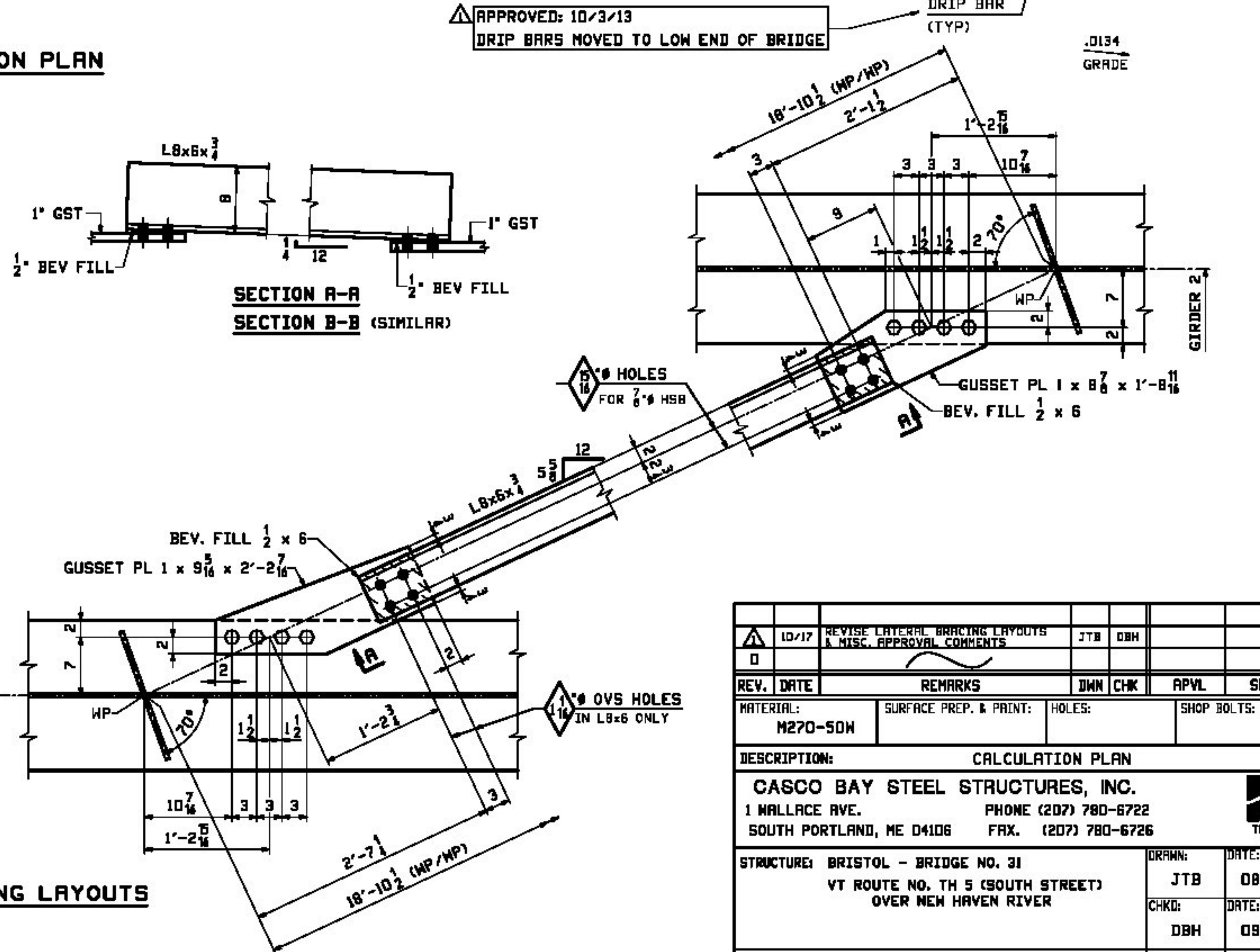
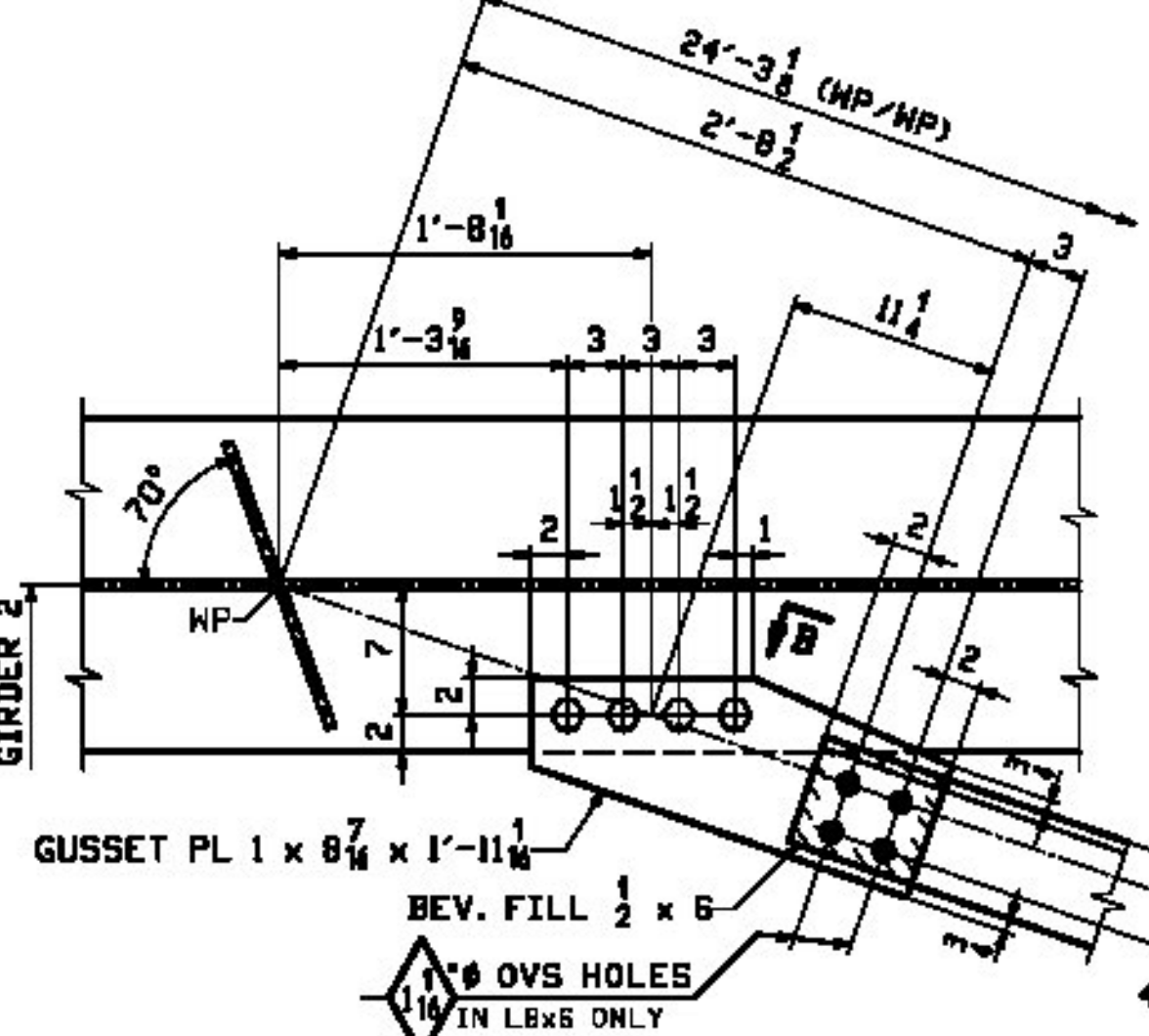


CALCULATION PLAN

- CALCULATION PLAN NOTES:**
1. LONGITUDINAL DIMENSIONS ARE SLOPING ALONG BTM OF GIRDERS WITH CORRECTIONS MADE FOR DL CAMBER, V.C. & GRADE (UN).
 2. TRANSVERSE DIMENSIONS ARE IN A HORIZONTAL PLANE (UN).
 3. ARROW POINTS TOWARD LOW END OF MEMBER.
 4. ENDS OF GIRDERS ARE VERTICAL AFTER DL ROTATION.
 5. DIAPHRAGM STIFFENERS ARE NORMAL TO GRADE.
 6. BOTTOM POINT NUMBERS = TOP POINT NUMBERS + 500
 7. COMBINE INT. DIAPHRAGMS FOR DIFF IN DROPS OF +/- 3/16.
 8. FOR LAYOUTS SEE 'TD' DRAWING.



LATERAL BRACING LAYOUTS

<input type="checkbox"/> Approved	<input type="checkbox"/> Revise and Resubmit
<input checked="" type="checkbox"/> Approved as Noted <small>(See 10/25/13)</small>	<input type="checkbox"/> Rejected <small>(See 10/25/13)</small>

Howe, Tanner
STRUCTURAL ENGINEERS, INC.

Project No. 204225

Approved by: AMS Date: 11/22/13

Approved by: MSO Date: 11/22/13

**** NOTE ****
THE PURPOSE OF THIS DRAWING IS TO COORDINATE GEOMETRIC CONTROL INFORMATION. THIS DWG IS SUBMITTED FOR INFORMATION ONLY AND IS NOT INTENDED FOR SHOP FABRICATION.

10/17	REVISE LATERAL BRACING LAYOUTS & MISC. APPROVAL COMMENTS	JTB	DBH		
0					
REV. DATE	REMARKS	DWN	CHK	APVL	SHOP
MATERIAL:	SURFACE PREP. & PAINT:	HOLES:		SHOP BOLTS:	
M270-50W					
DESCRIPTION: CALCULATION PLAN					
CASCO BAY STEEL STRUCTURES, INC.					
1 WALLACE AVE.			PHONE (207) 780-6722		
SOUTH PORTLAND, ME 04106			FAX (207) 780-6726		
STRUCTURE:	BRISTOL - BRIDGE NO. 31	DRAWN:	JTB	DATE:	08/09
	VT ROUTE NO. TH 5 (SOUTH STREET)	CHKD:	DBH	DATE:	09/07
	OVER NEW HAVEN RIVER				
LOCATION:	TOWN OF BRISTOL, VT (ADDISON COUNTY)	JOB NO.	534	DWG NO.	WS1
PROJ NO.	BRO 1445 (32)				
CUSTOMER:	BLOM AND COTE				