

**GENERAL NOTES**

**CONSTRUCTION SPECIFICATIONS**

- 1) ALL MATERIAL AND WORKMANSHIP TO BE IN ACCORDANCE WITH THE STATE OF VERMONT AGENCY OF TRANSPORTATION STANDARD SPECIFICATIONS FOR CONSTRUCTION DATED 2011 WITH LATEST REVISIONS AND THE AASHTO LRFD BRIDGE CONSTRUCTION SPECIFICATIONS FOR HIGHWAY BRIDGES, 2012 AND ITS LATEST REVISIONS.

**MATERIAL SPECIFICATIONS**

- 1) UNLESS OTHERWISE NOTED, ALL STEEL TO BE UNPAINTED AASHTO M270 (ASTM A709) GRADE 50M.
- 2) MATERIAL NOTED "CVN" OR "T2" ON DETAIL DRAWINGS SHALL BE CHARPY V-NOTCH TESTED IN ACCORDANCE WITH THE REQUIREMENTS OF VERMONT STANDARD SPECIFICATIONS SECTION 714.01.
- 3) HIGH STRENGTH BOLTS: ASTM A325 (AASHTO M164) 7/8" DIAMETER, TYPE 3, IN 15/16" DIAMETER HOLES, UNLESS NOTED OTHERWISE. NUTS SHALL BE A563 (TYPE 3) GRADE C3.

BOLTS & NUTS SHALL BE ROTATIONAL CAPACITY TESTED. DO NOT MIX NUTS & BOLTS FROM DIFFERENT CONTAINERS UNLESS ALL BOLTS & NUTS HAVE THE SAME LOT NUMBER.

**FABRICATION**

- 1) ALL HOLES SHALL BE PUNCHED OR DRILLED FULL SIZE (UN).

**WELDING**

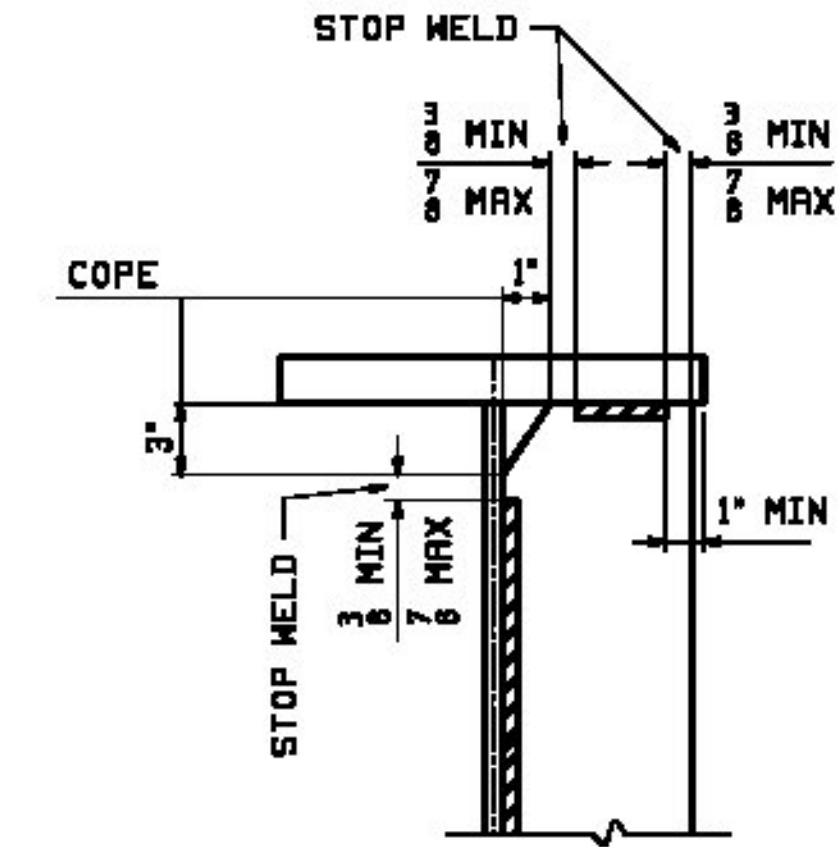
- 1) THE CONFIGURATION OF THE WELD JOINTS AND ALL WELDING PROCEDURES SHALL BE IN ACCORDANCE WITH AASHTO/AWS D1.5-08 BRIDGE WELDING CODE AND IN ADDITION TO SPECIFICATIONS SHOWN ABOVE. ALL WELDING WILL BE DETAILED TO PRE-QUALIFIED JOINTS, UNLESS PROHIBITED BY THE DESIGNER.
- 2) WELDING OF MAIN LOAD CARRYING MEMBERS AND ATTACHMENTS SHALL BE PERFORMED USING THE AUTOMATIC SUBMERGED ARC & SHIELDED METAL ARC PROCESSES. ALL WELDS ARE CONTINUOUS U.N.
- 3) NON DESTRUCTIVE TESTING OF WELDS SHALL BE IN ACCORDANCE WITH THE REFERENCED SPECIFICATION.
- 4) SEE DETAILS "WS1" & "WS2" ON THIS DRAWING FOR WELD TERMINATION DETAIL.

**CLEANING**

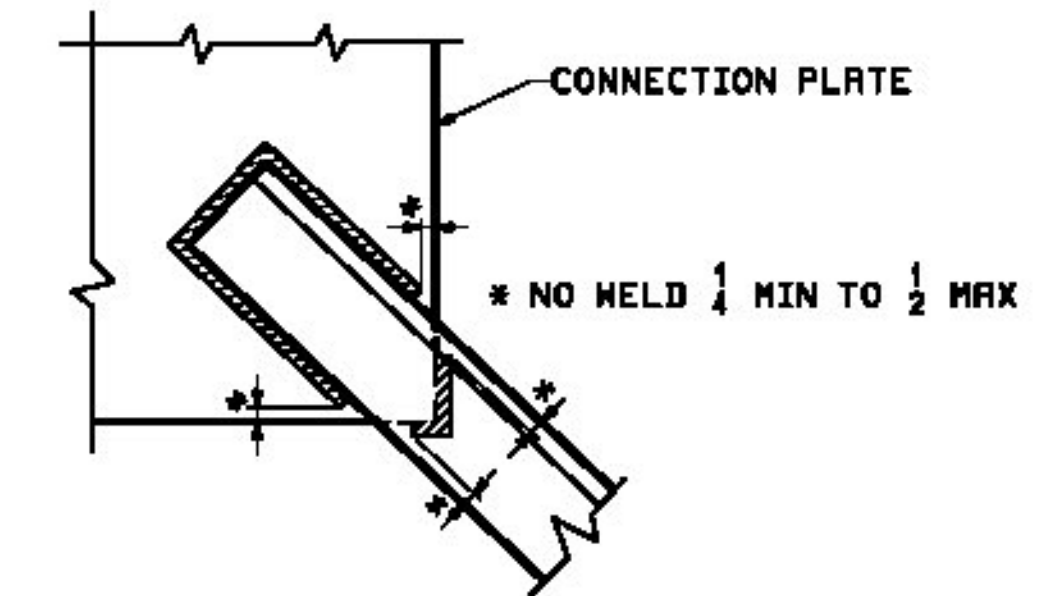
- 1. ALL STEEL SHALL BE BLAST CLEANED IN ACCORDANCE WITH SSPC SP-10.
- 2. STRUCTURAL STEEL SHALL NOT BE PAINTED.

**FIELD CONNECTIONS**

- 1). ALL FIELD CONNECTIONS SHALL BE MADE WITH 7/8" DIAMETER HIGH STRENGTH A-325 TYPE 3 BOLTS (UN), INSTALLED PER SECTION 506.19(c). SEE DWG E1 FOR FIELD BOLT SIZES.
- 2). BOLTS SHALL HAVE HEAVY HEX NUT, HEAVY HEX HEAD, AND AT LEAST ONE FLAT WASHER EACH. WASHER TO BE PLACED UNDER TURNED ELEMENT.
- 3). PIECE MARKS WILL BE LOCATED AS SHOWN ON ERECTION DRAWINGS.



**DETAIL "WS1"**  
STIFFENER WELD TERMINATION



**DETAIL "WS2"**  
TYP. WELD TERMINATION

**NOTE TO ENGINEER:**  
THESE NOTES ARE NOT INTENDED TO BE ALL INCLUSIVE AND COMPLIANCE WITH RELEVANT SPECIFICATIONS REMAIN URGENT.

<input type="checkbox"/> Approved	<input type="checkbox"/> Revise and Resubmit
<input checked="" type="checkbox"/> Approved as Noted <small>(as noted for use)</small>	<input type="checkbox"/> Rejected <small>(as noted for use)</small>

**Hoyle, Tanner & Associates, Inc.** Project No. 903226

Approval is only for general conformance with the design subject to the Plans and the information given in the Contract Documents. Contractor is responsible for ascertaining to be confirmed and corrected at the job site. Information that pertains solely to the fabrication process or to the means and methods of construction is the responsibility of the contractor, and performing on work in a safe and satisfactory manner. This approval does not absolve Contractor's duty of care, care, and contract.

Reviewed By: AS Date: 11/1/13  
 Approved By: JAO Date: 11/1/13

REV.	DATE	REMARKS	DWN	CHK	APVL	SHOP
0						
MATERIAL:		SURFACE PREP. & PAINT:	HOLES:		SHOP BOLTS:	
DESCRIPTION: GENERAL NOTES						
CASCO BAY STEEL STRUCTURES, INC. 1 WALLACE AVE. PHONE (207) 780-6722 SOUTH PORTLAND, ME 04106 FAX. (207) 780-6726						
STRUCTURE: BRISTOL - BRIDGE NO. 31 VT ROUTE NO. TH 5 (SOUTH STREET) OVER NEW HAVEN RIVER				DRWN:	DATE:	
				JTB	08/13	
				CHKD:	DATE:	
				DBH	08/07	
LOCATION: TOWN OF BRISTOL, VT (ADDISON COUNTY)			JOB NO.	DWG NO.		
PROJ NO. BRO 1445 (32)			534	GN1		
CUSTOMER: BLOM AND COTE				REV. <input type="checkbox"/>		