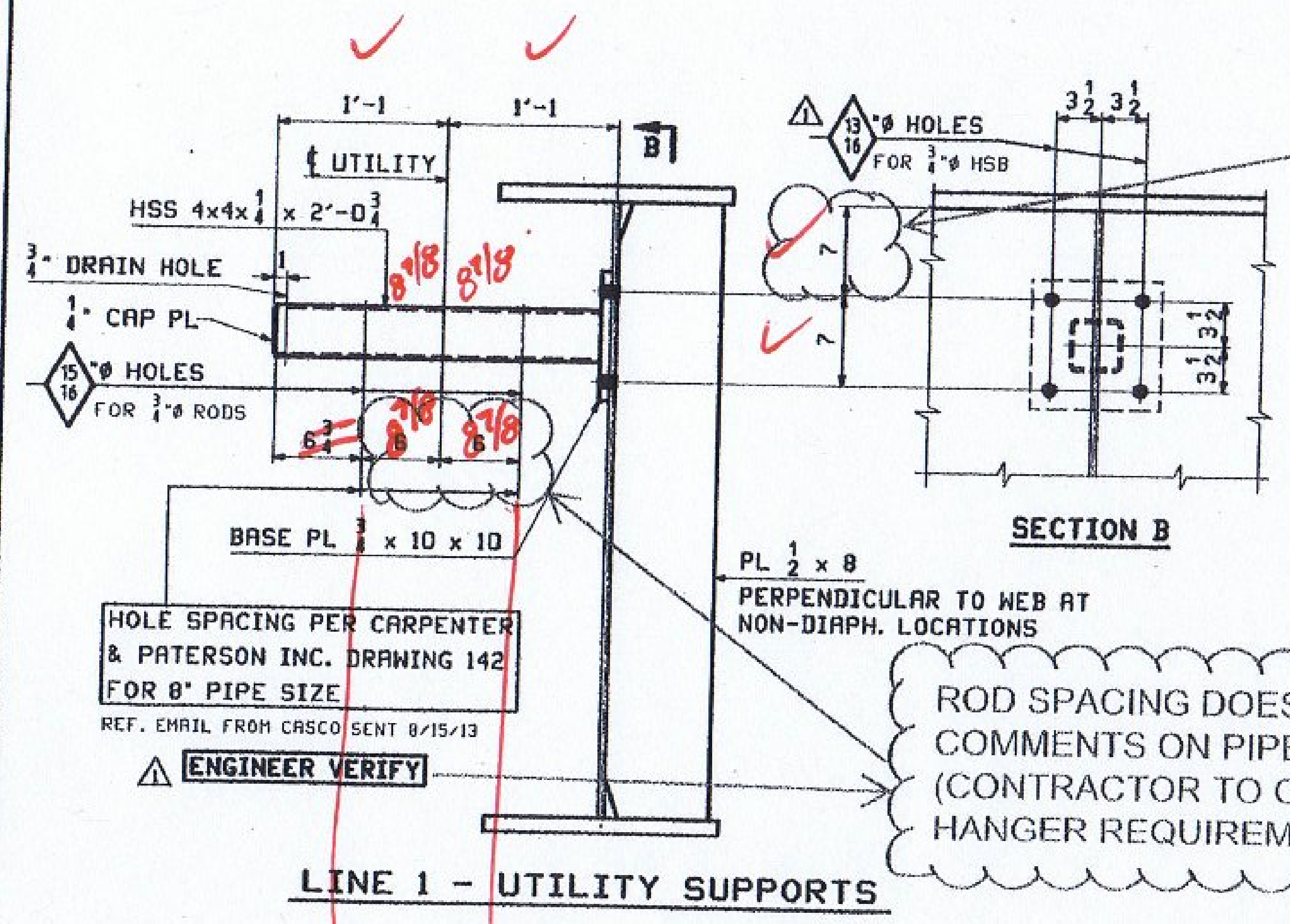
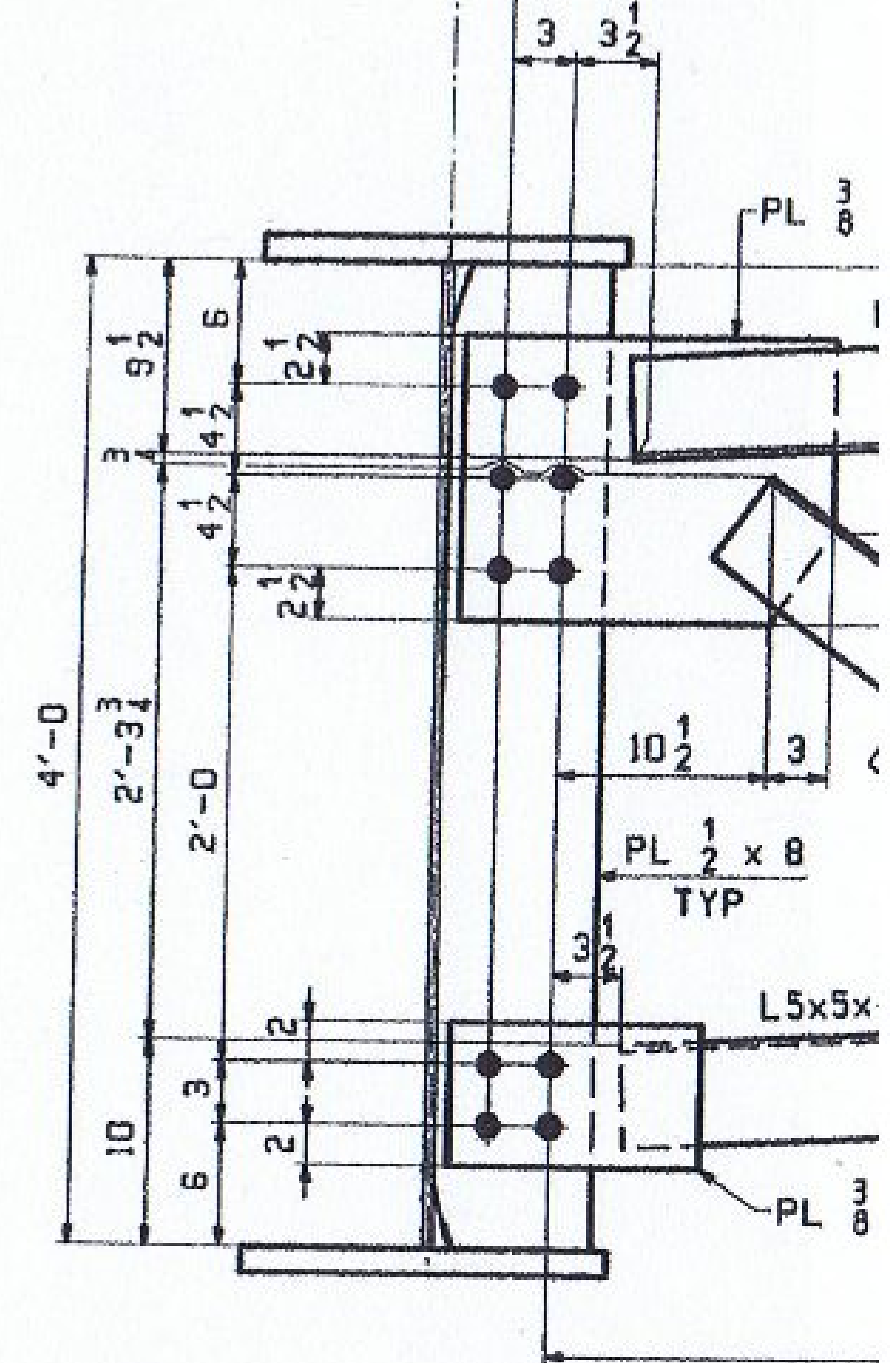


INT. DIAPHRAGMS - TYPE D1
 (DEVELOPED)
 FRAMES NS OR FS OF STIFFENERS - SEE WS1



*CONTRACTOR VERIFY THIS DIMENSION (COORDINATE WITH FIELD DIMENSIONS AND PIPE HANGER SUBMITTAL).

ROD SPACING DOES NOT MATCH PLANS SEE COMMENTS ON PIPE HANGER SUBMITTAL (CONTRACTOR TO COORDINATE PIPE HANGER REQUIREMENTS TO FABRICATOR)

Vermont Agency of Transportation

RECEIVED

CK'D BY J. LaCroix

November 11, 2013

RESUBMIT No Approved

BY J. LaCroix DATE 11/15/2013

- NOTES:
1. MATERIAL IS M270-501
 2. ALL HOLES SHALL BE
 3. BOLTS SHALL BE 7/8" Ø (1)
 4. BOLTS SHALL BE 7/8" Ø (1)
 5. BOLTS AT UTILITY COI

** NOTE **
 THE PURPOSE OF THIS DRAWING CONTROL INFORMATION AND IS SUBMITTED FOR INFORMATION FOR SHOP FABRICATION. DE WELDING AND DIMENSIONS R

11/15/2013 10:58 AM 11/15/2013 10:58 AM 11/15/2013 10:58 AM

173 1/4"