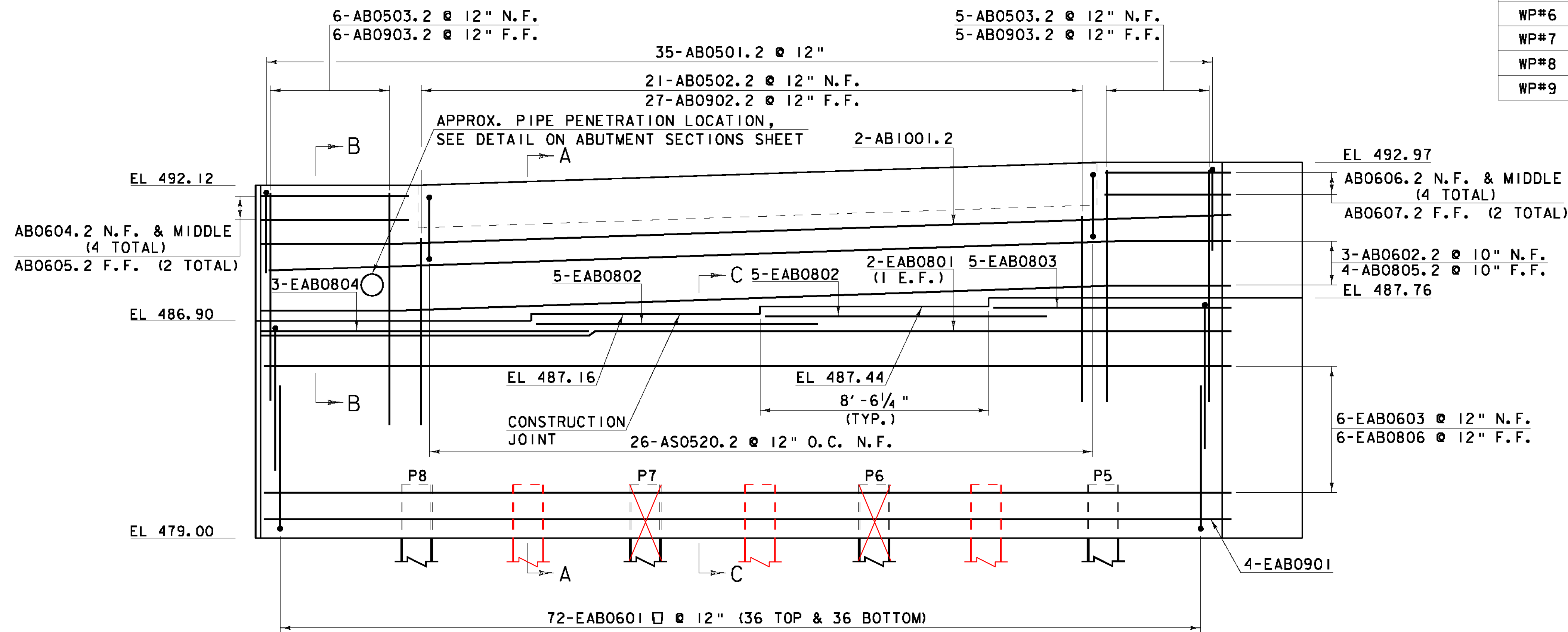
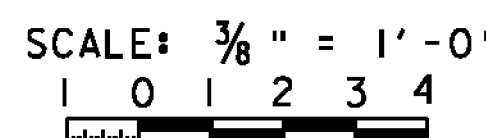


WORKING POINT (WP)	STATION	OFFSET
WP#5	53+23.00	LT. 17.53
WP#6	53+12.39	LT. 17.16
WP#7	53+18.13	LT. 00.40
WP#8	53+23.00	RT. 17.25
WP#9	53+32.45	RT. 23.21



NOTE:
 E = EPOXY COATED REINFORCING
 NF = NEAR FACE
 FF = FAR FACE
 EF = EACH FACE
 ▲ = CUT TO FIT IN FIELD
 2" CLEAR, UNLESS OTHERWISE SPECIFIED ON THE PLANS.
 3'-0" BAR LAP UNLESS OTHERWISE SPECIFIED ON THE PLANS.

NOTE: WORK THIS SHEET WITH ABUTMENT SECTION SHEET.



Hoyle, Tanner & Associates, Inc.

HTA PROJECT 904226 MODEL z051352sub2

PROJECT NAME: BRISTOL	PLOT DATE: 02/28/2013
PROJECT NUMBER: BRO 1445(32)	DRAWN BY: J.MCQUAID
FILE NAME: z051352sub2.dgn	CHECKED BY: J.OLIN
PROJECT LEADER: J.LACROIX	SHEET 40 OF 66
DESIGNED BY: J.OLIN/ A.SAUNDERS	
ABUTMENT NO.2 PLAN AND ELEVATION	