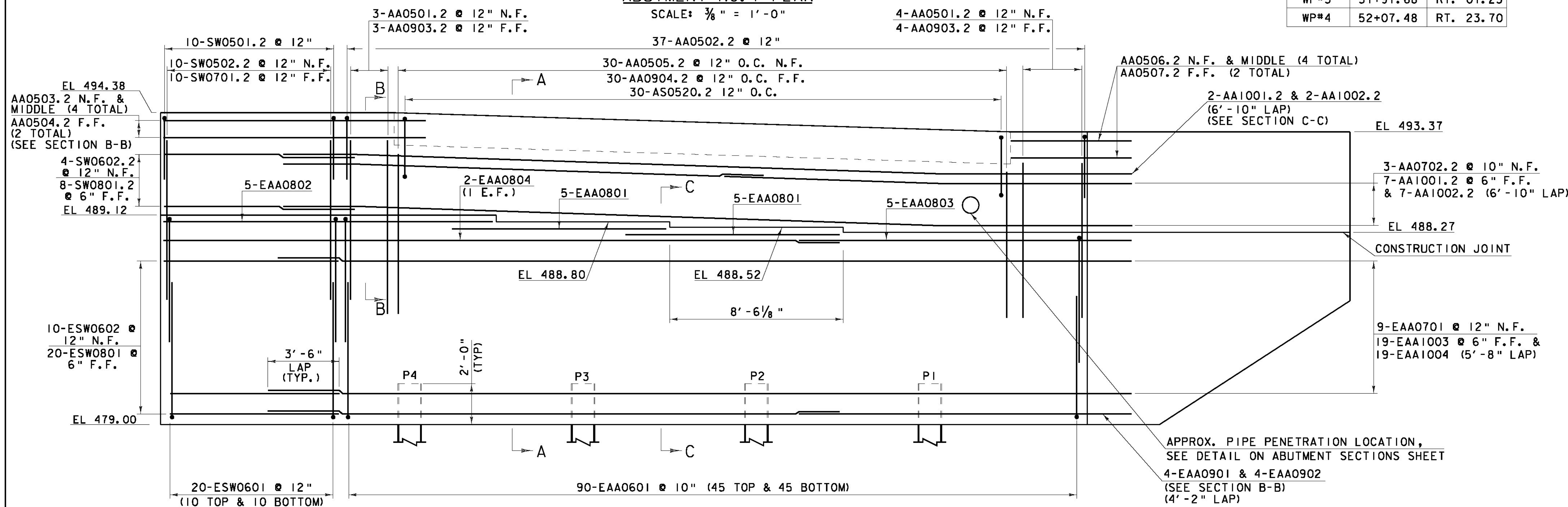


WORKING POINT (WP)	STATION	OFFSET
WP#1	51+65.15	LT. 18.18
WP#2	51+84.77	LT. 17.33
WP#3	51+97.68	RT. 01.23
WP#4	52+07.48	RT. 23.70

ABUTMENT NO. 1 PLAN

SCALE: 3/8" = 1'-0"



ABUTMENT NO. 1 ELEVATION

SCALE: 3/8" = 1'-0"

NOTE: DECK AND NORTHWEST WINGWALL REINFORCING NOT SHOWN FOR CLARITY.

NOTE: WORK THIS SHEET WITH ABUTMENT SECTIONS SHEET.

NOTE:
 E = EPOXY COATED REINFORCING
 NF = NEAR FACE
 FF = FAR FACE
 EF = EACH FACE
 ▲ = CUT TO FIT IN FIELD
 2" CLEAR, UNLESS OTHERWISE SPECIFIED ON THE PLANS.
 3'-0" BAR LAP UNLESS OTHERWISE SPECIFIED ON THE PLANS.

Hoyle, Tanner & Associates, Inc.

HTA PROJECT MODEL
 904226 z051352sub1

PROJECT NAME: BRISTOL
 PROJECT NUMBER: BRO 1445(32)

FILE NAME: z051352sub1.dgn
 PROJECT LEADER: J.LACROIX
 DESIGNED BY: J.OJIN/ A.SAUNDERS
ABUTMENT NO.1 PLAN AND ELEVATION

PLOT DATE: 02/28/2013
 DRAWN BY: J.MCQUAID
 CHECKED BY: J.OJIN
 SHEET 39 OF 66

