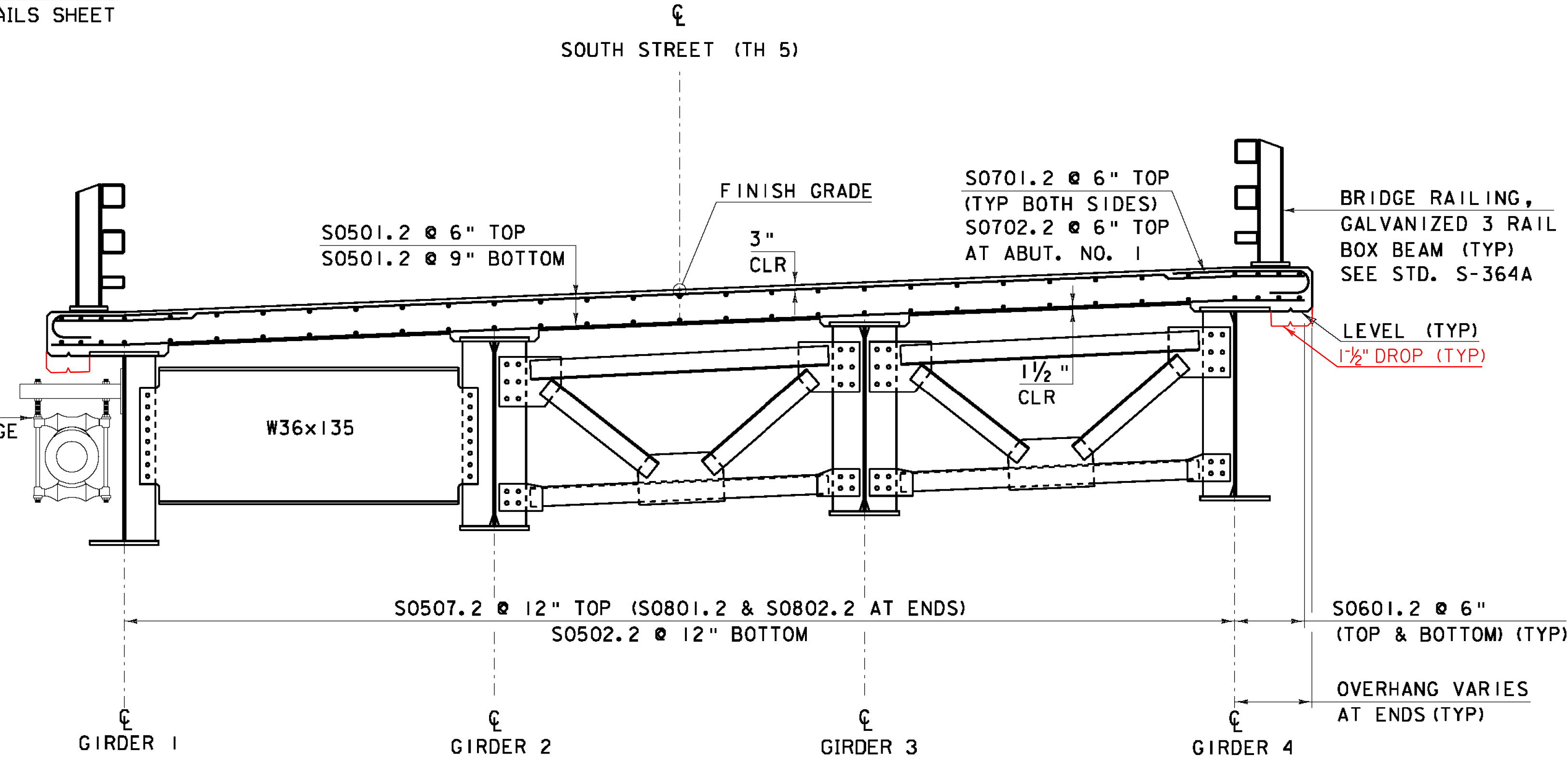


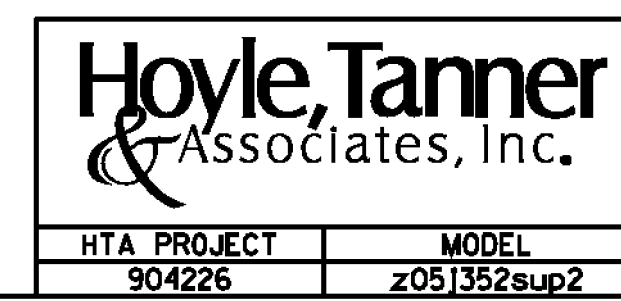
**DECK REINFORCING PLAN**  
SCALE 3/16" = 1'-0"



**DECK REINFORCING TYPICAL**  
NOT TO SCALE

DISTANCE	OVERHANG LENGTHS, MEASURED NORMAL TO THE CENTERLINE OF ADJACENT GIRDER										
	10TH POINT DISTANCE ALONG GIRDER, MEASURED FROM CENTERLINE ABUTMENT										
	0 FT	12.06 FT	24.12 FT	36.17 FT	48.23 FT	60.29 FT	72.35 FT	84.41 FT	96.46 FT	108.52 FT	120.58 FT
LEFT OVERHANG	3'-1 3/8"	1'-8 15/16"	1'-8"	1'-8"	1'-8"	1'-8"	1'-8"	1'-8"	1'-8"	1'-8 3/16"	1'-10 5/8"
RIGHT OVERHANG	2'-5 1/8"	1'-8 15/16"	1'-8"	1'-8"	1'-8"	1'-8"	1'-8"	1'-8"	1'-8"	1'-6 7/8"	1'-3 7/16"

**NOTE:**  
 NF = NEAR FACE  
 FF = FAR FACE  
 EF = EACH FACE  
 ▲ = CUT TO FIT IN FIELD  
 3" CLEAR, UNLESS OTHERWISE SPECIFIED ON THE PLANS.  
 3'-0" BAR LAP UNLESS OTHERWISE SPECIFIED ON THE PLANS.  
 ALL REINFORCING STEEL TO BE CUT IN THE FIELD IS TO BE SAW CUT AND EXPOSED END TREATED AS PER SUBSECTION 507.04.



PROJECT NAME: BRISTOL  
 PROJECT NUMBER: BRO 1445(32)  
 FILE NAME: z05j352sup2.dgn  
 PROJECT LEADER: J.LACROIX  
 DESIGNED BY: J.OLIN/ A.SAUNDERS  
**DECK DETAILS**  
 PLOT DATE: 02/28/2013  
 DRAWN BY: J.MCQUAID  
 CHECKED BY: J.OLIN  
 SHEET 32 OF 66