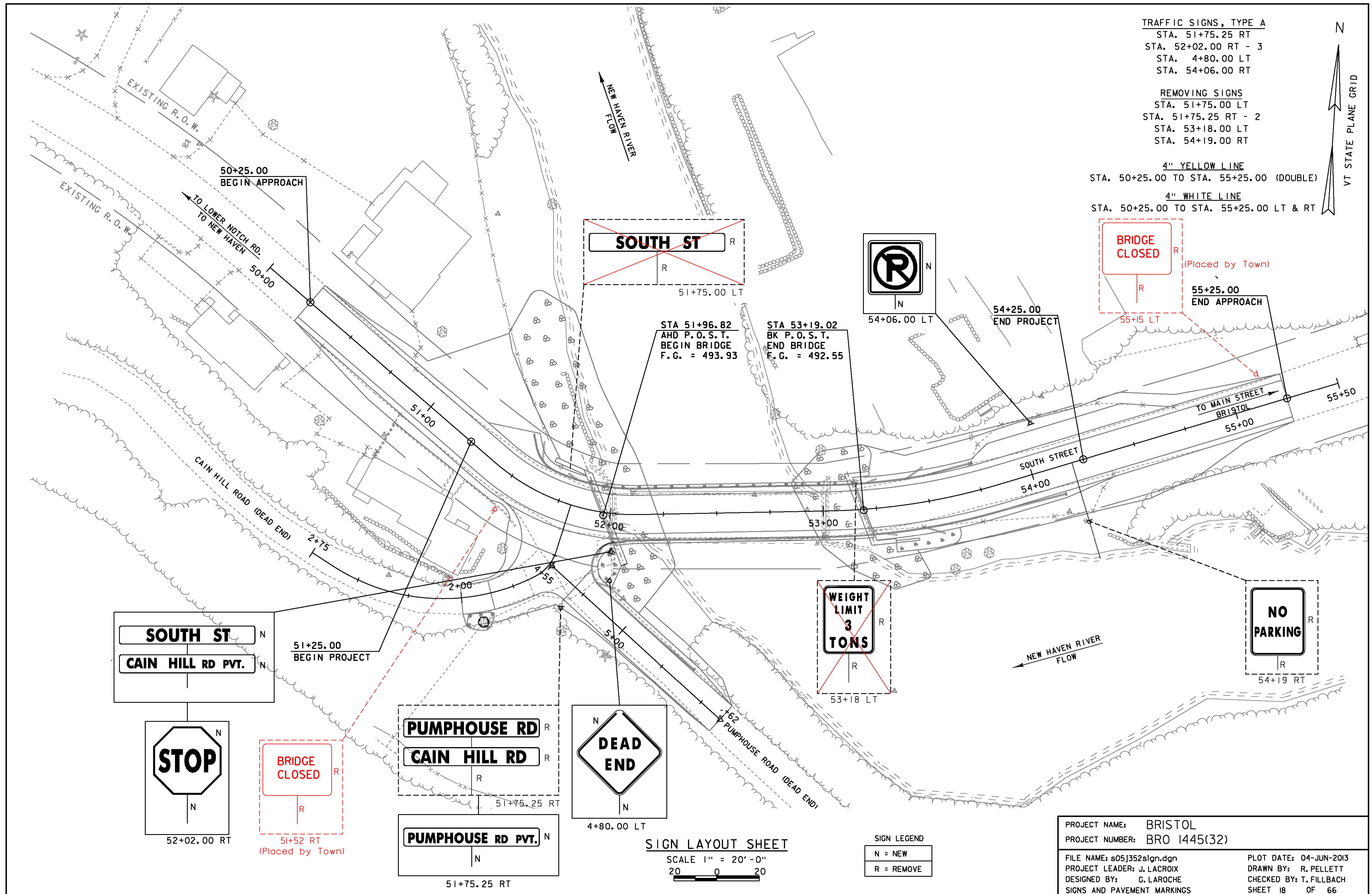


TRAFFIC SIGNS, TYPE A  
 STA. 51+75.25 RT  
 STA. 52+02.00 RT - 3  
 STA. 4+80.00 LT  
 STA. 54+06.00 RT

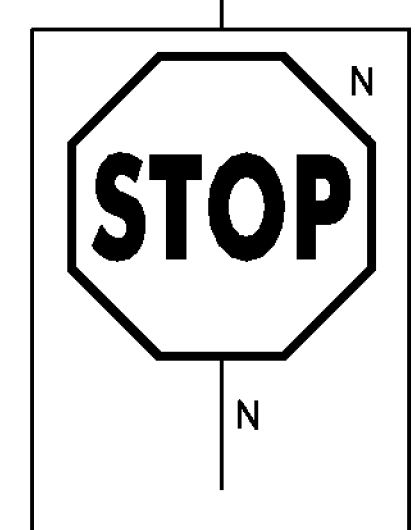
REMOVING SIGNS  
 STA. 51+75.00 LT  
 STA. 51+75.25 RT - 2  
 STA. 53+18.00 LT  
 STA. 54+19.00 RT

4" YELLOW LINE  
 STA. 50+25.00 TO STA. 55+25.00 (DOUBLE)

4" WHITE LINE  
 STA. 50+25.00 TO STA. 55+25.00 LT & RT



**SOUTH ST**  
**CAIN HILL RD PVT.**

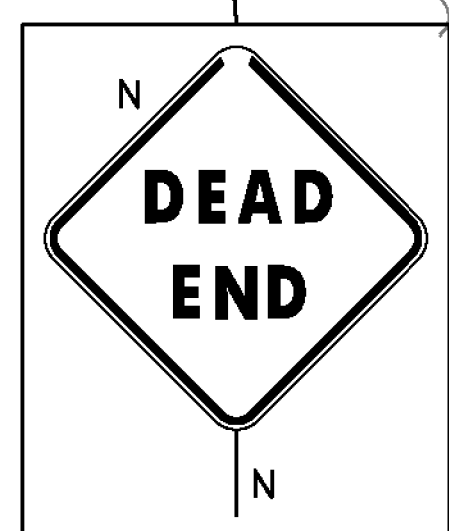


52+02.00 RT

**BRIDGE CLOSED**  
 (Placed by Town)

**PUMPHOUSE RD**  
**CAIN HILL RD**

**PUMPHOUSE RD PVT.**



4+80.00 LT

**WEIGHT LIMIT**  
**3 TONS**

53+18 LT

**BRIDGE CLOSED**  
 (Placed by Town)

55+25.00  
 END APPROACH

**NO PARKING**

54+19 RT

**SIGN LAYOUT SHEET**

SCALE 1" = 20'-0"  
 20 0 20

SIGN LEGEND  
 N = NEW  
 R = REMOVE

PROJECT NAME: BRISTOL  
 PROJECT NUMBER: BRO 1445(32)

FILE NAME: s05j352sign.dgn  
 PROJECT LEADER: J. LACROIX  
 DESIGNED BY: G. LAROCHE  
 SIGNS AND PAVEMENT MARKINGS

PLOT DATE: 04-JUN-2013  
 DRAWN BY: R. PELLETT  
 CHECKED BY: T. FILLBACH  
 SHEET 18 OF 66