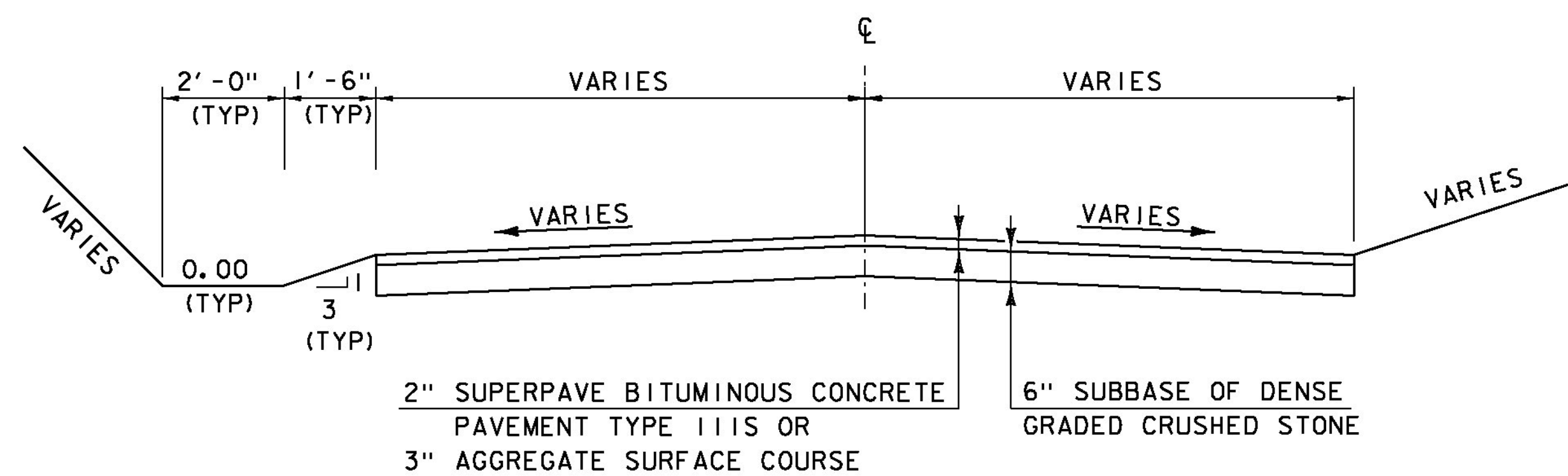
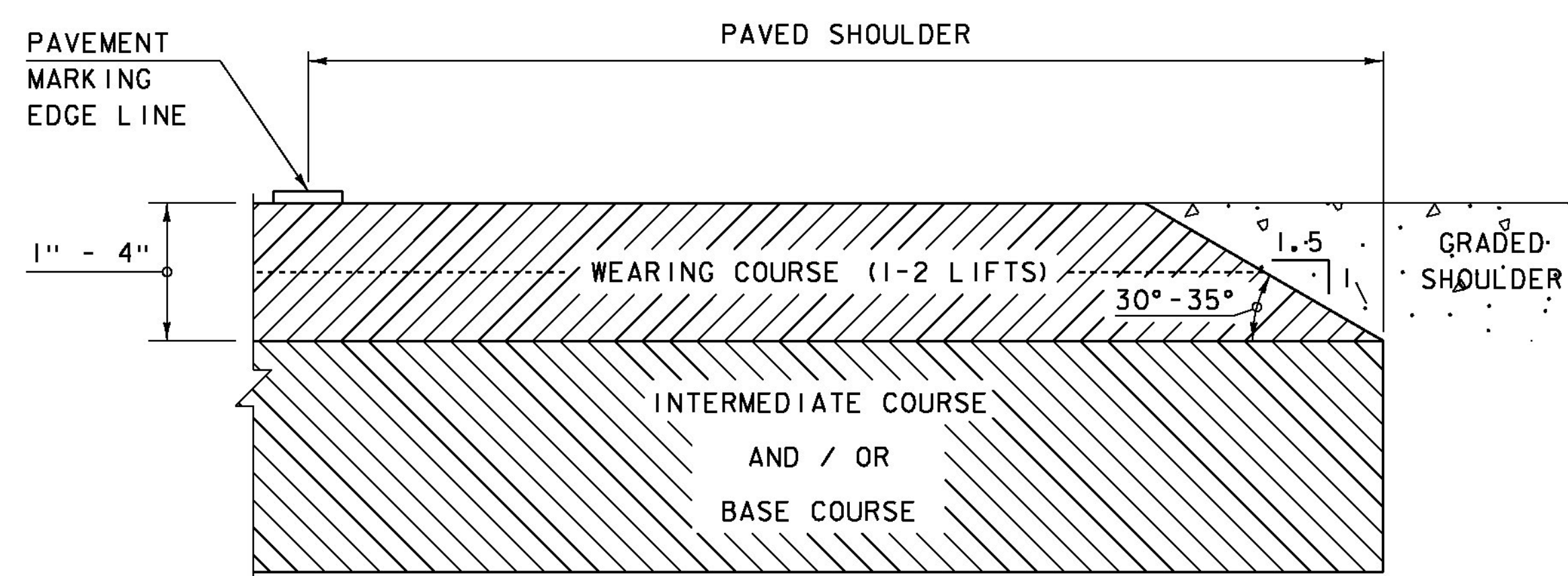


MANUFACTURED TERMINAL SECTION, TANGENT DETAIL  
SCALE 1/2" = 1'-0"

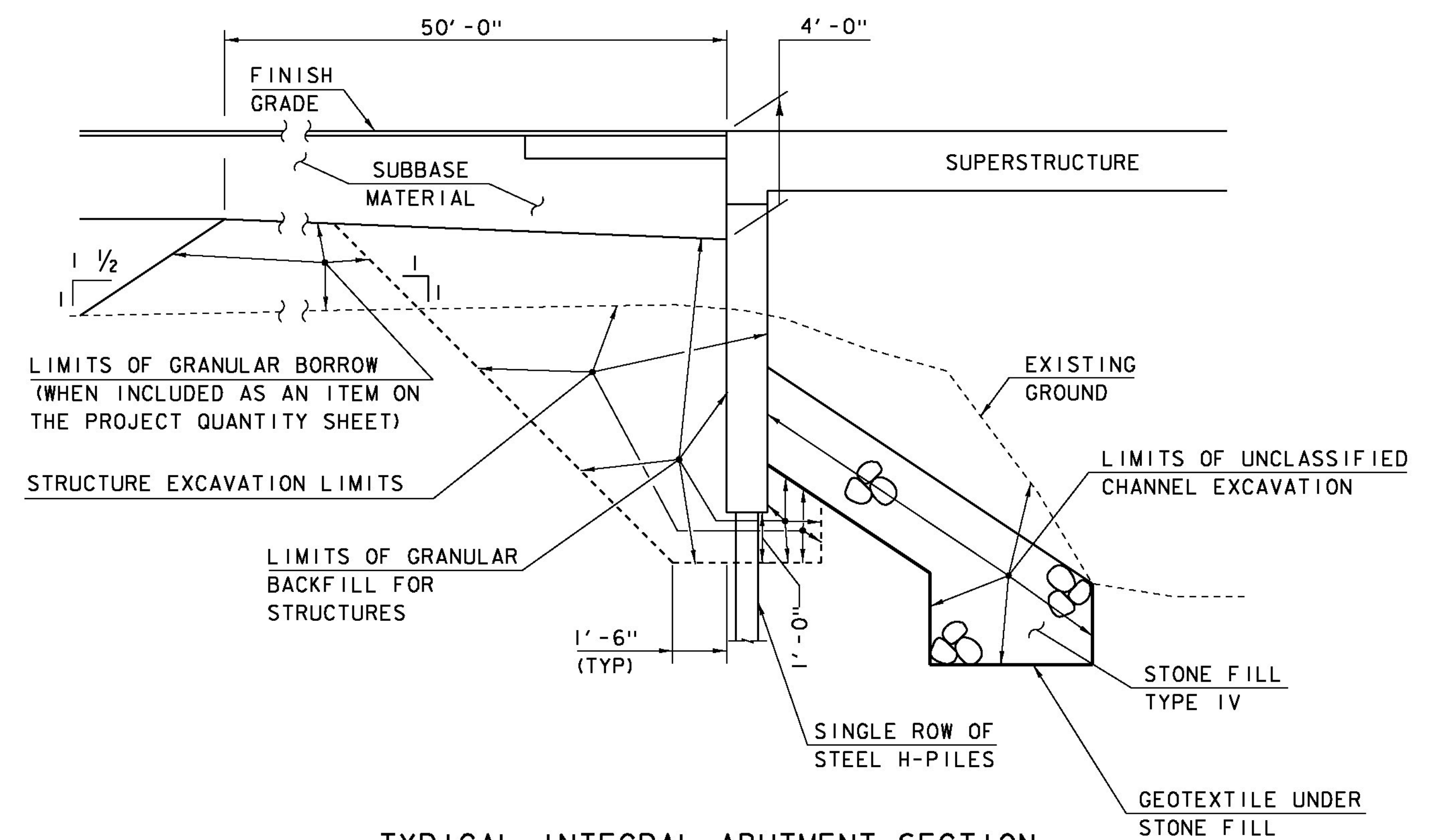


SIDE ROAD TYPICAL SECTION  
SCALE 1/2" = 1'-0"



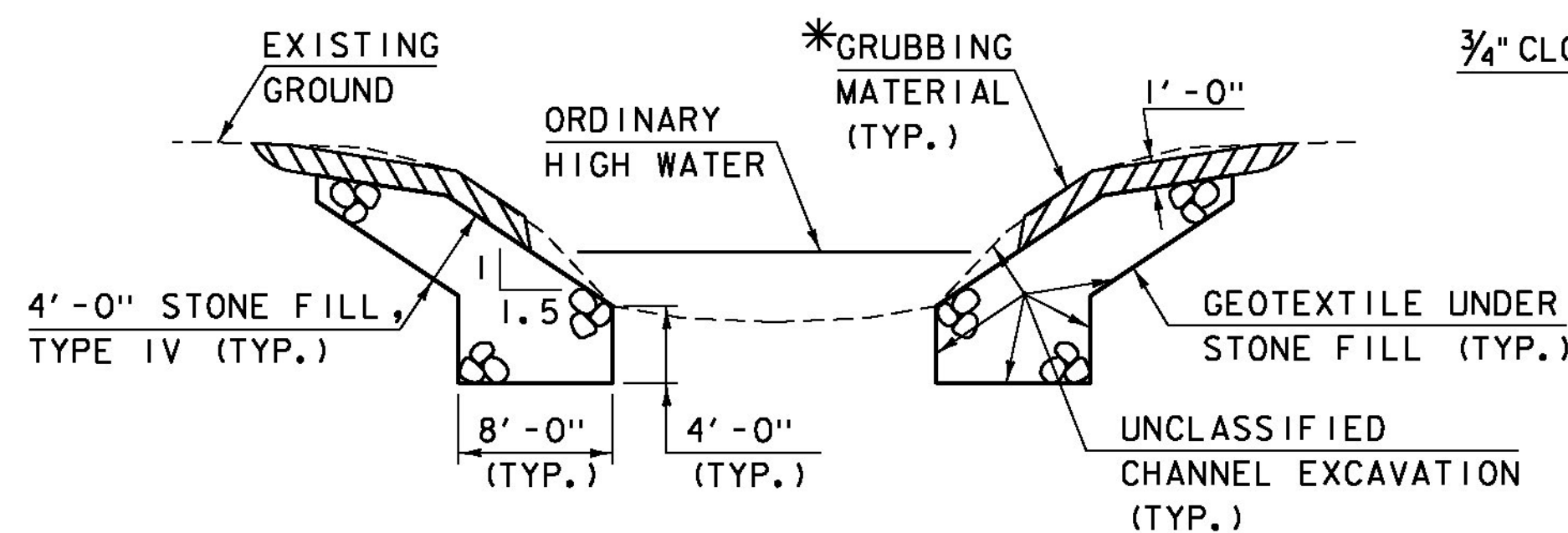
SAFETY EDGE DETAIL  
NOT TO SCALE

NOTE: LEVELING COURSE MAY INCLUDE THE "SAFETY EDGE" AT THE CONTRACTOR'S CHOICE.



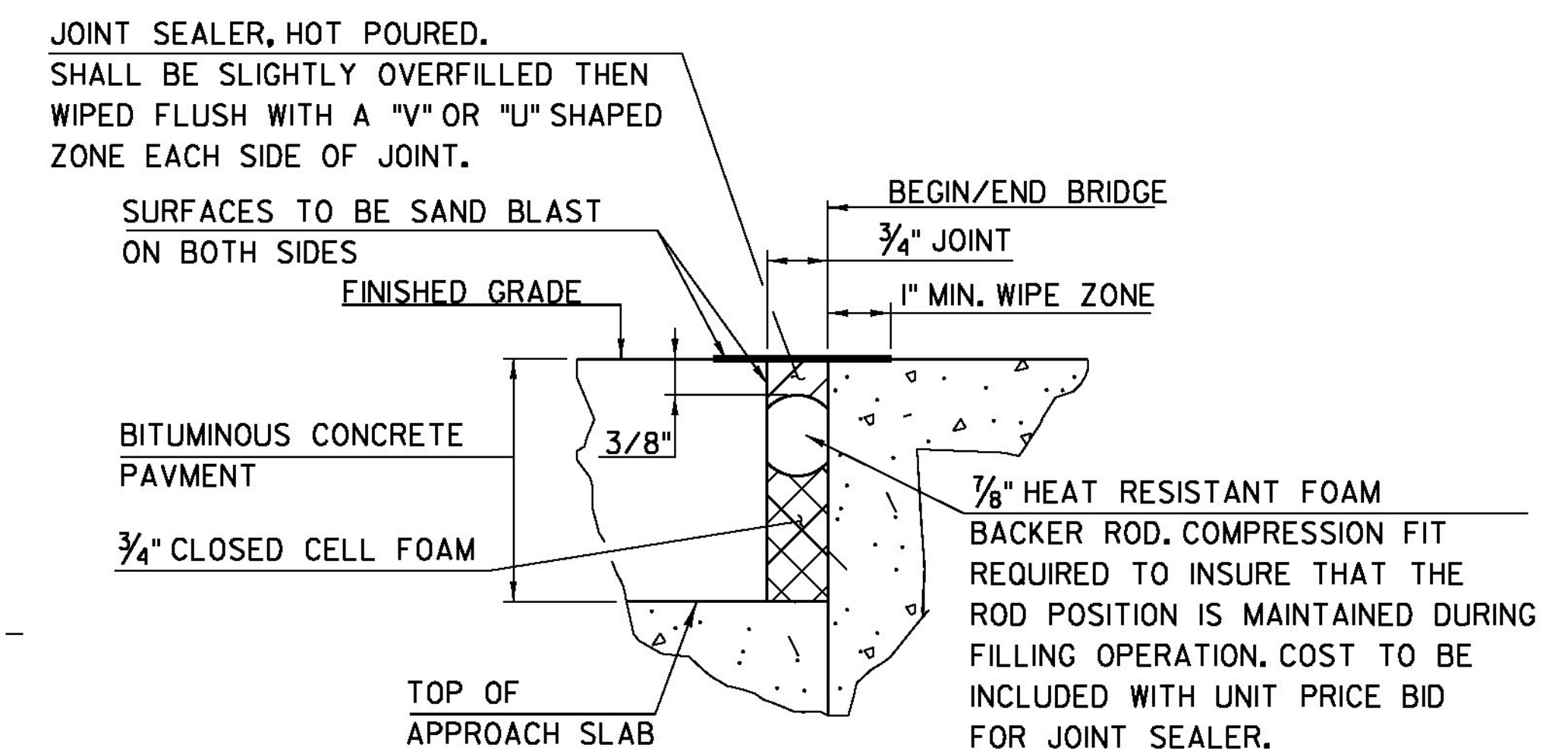
TYPICAL INTEGRAL ABUTMENT SECTION  
NOT TO SCALE

ACTUAL LIMITS OF STRUCTURE EXCAVATION SHALL BE DETERMINED BY THE CONTRACTOR. HOWEVER, ONLY THE EXCAVATION BETWEEN THE LIMITS SHOWN WILL BE PAID FOR UNDER THE ITEM 204.25 "STRUCTURE EXCAVATION". EXCAVATION BY THE CONTRACTOR OUTSIDE OF THESE LIMITS WILL BE AT THE EXPENSE OF THE CONTRACTOR.



TYPICAL CHANNEL SECTION  
(NOT TO SCALE)

\*GRUBBING MATERIAL SHALL NOT BE PLACED ON THE STONE FILL IN THE AREA UNDER THE BRIDGE. WHENEVER CHANNEL SLOPE INTERSECTS ROADWAY SUBBASE, GRUBBING MATERIAL SHALL BEGIN AT THE BOTTOM OF SUBBASE.



PROJECT NAME: BRISTOL  
PROJECT NUMBER: BRO 1445(32)

FILE NAME: s05j352+yp.dgn  
PROJECT LEADER: J. LACROIX  
DESIGNED BY: G. LAROCHE  
TYPICAL SECTIONS SHEET #2  
PLOT DATE: 04-JUN-2013  
DRAWN BY: R. PELLETT  
CHECKED BY: T. FILLBACH  
SHEET 4 OF 66