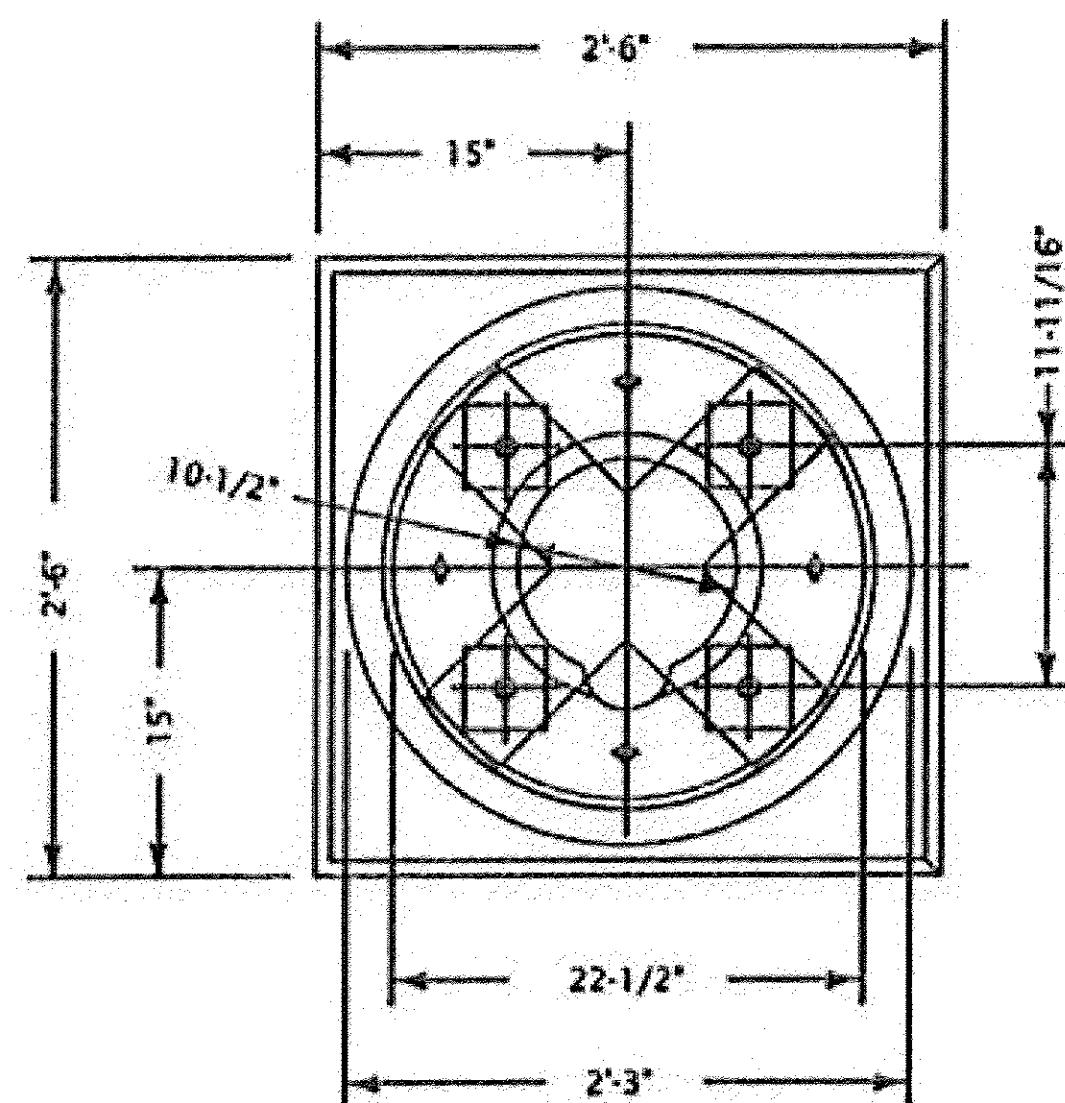
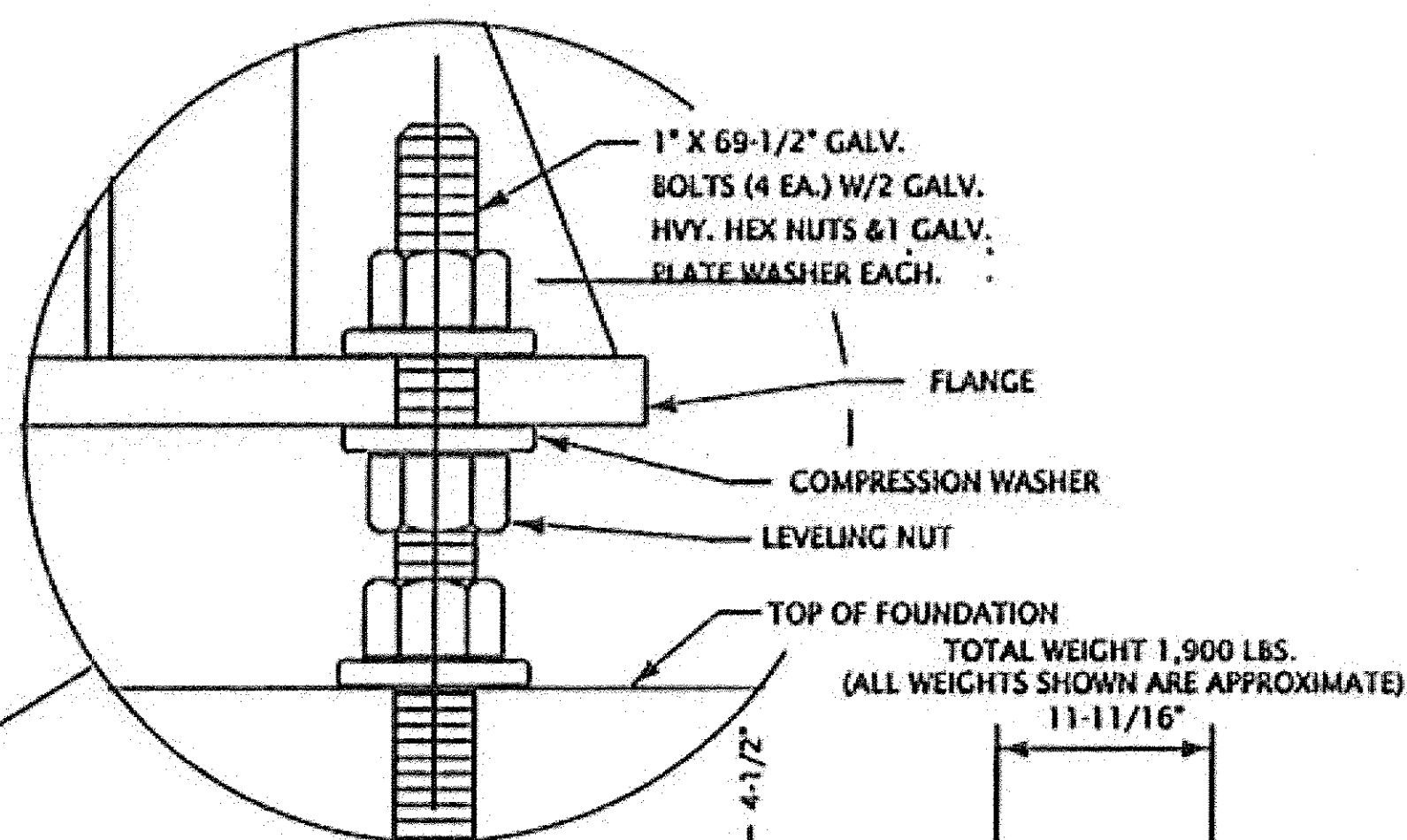


FILE
SC431.1
REVISIONS

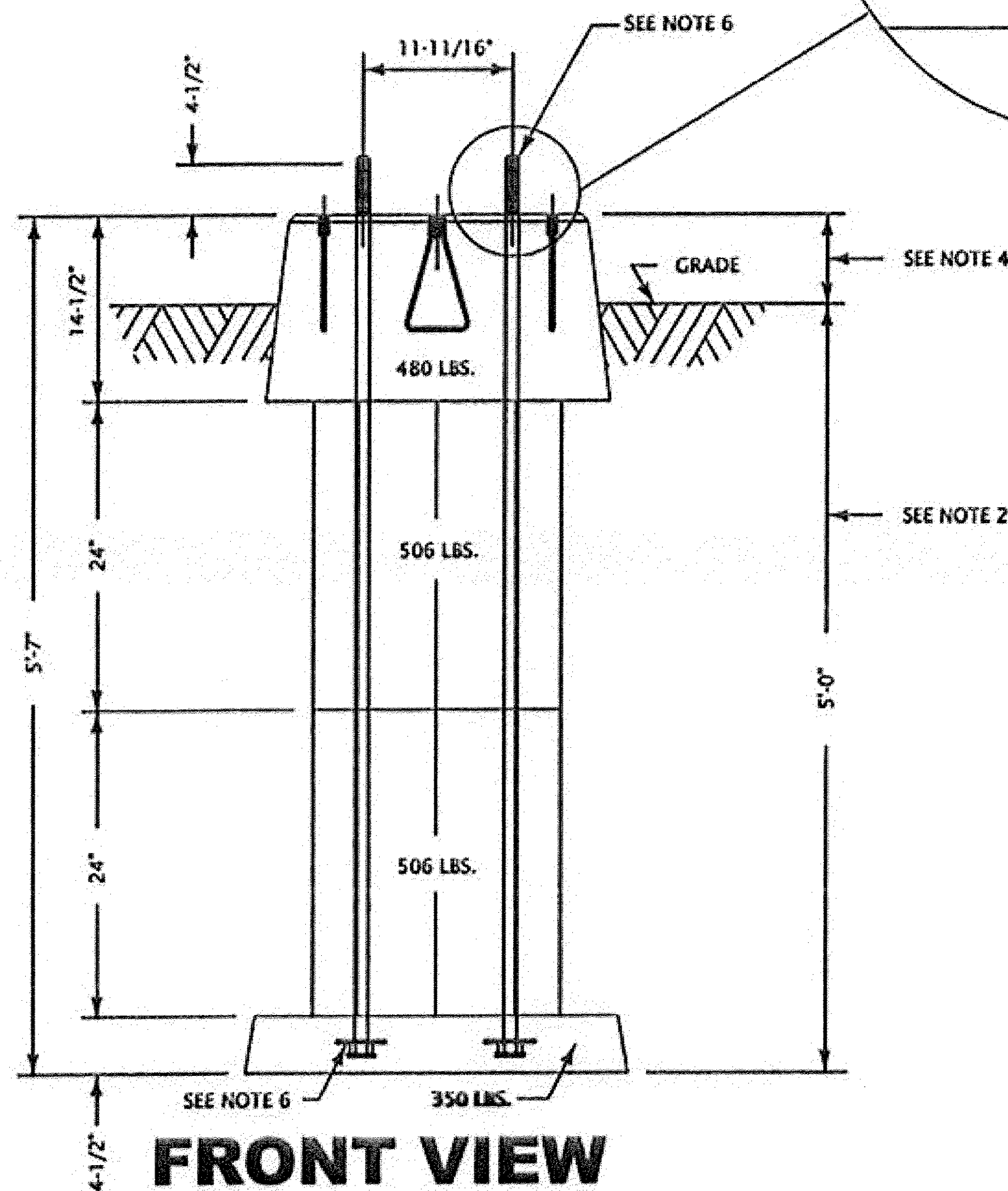


PLAN VIEW

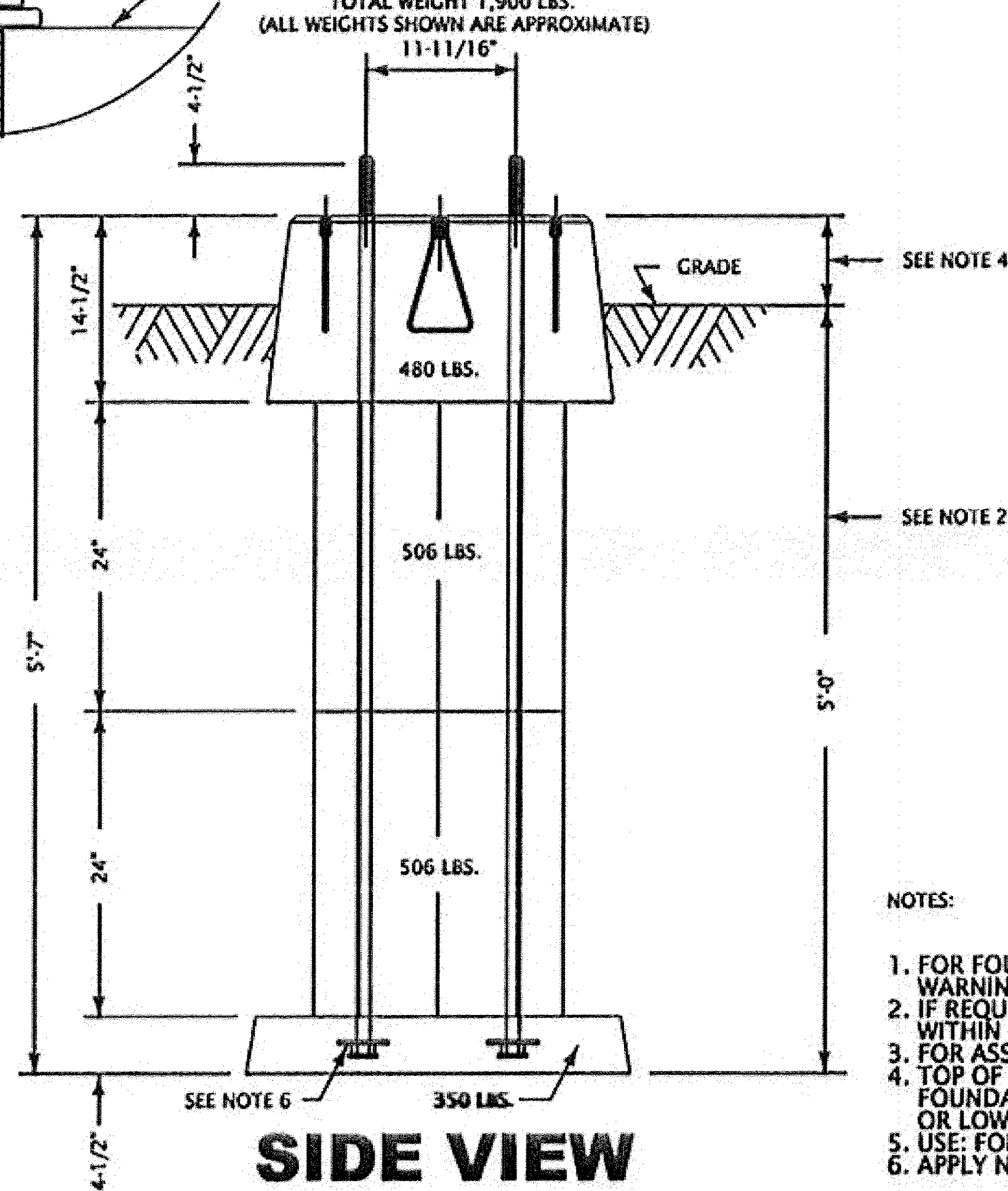


TOTAL WEIGHT 1,900 LBS.
(ALL WEIGHTS SHOWN ARE APPROXIMATE)

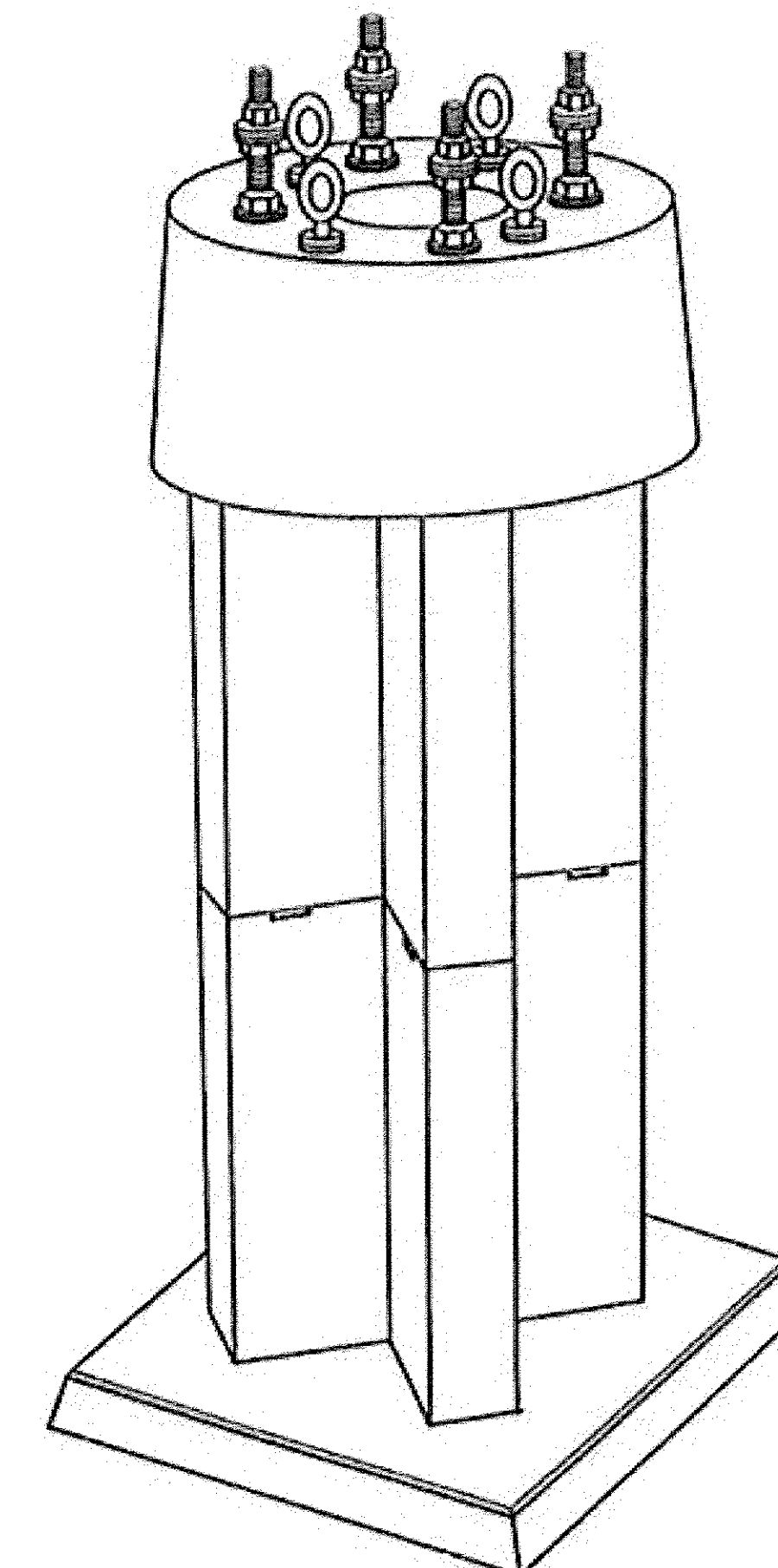
TOTAL WEIGHT 1,900 LBS.
(ALL WEIGHTS SHOWN ARE APPROXIMATE)



FRONT VIEW



SIDE VIEW



CATALOG NUMBER	HEIGHT	WEIGHT	BOLT LENGTH	USE
DPS-2A	5'-7"	1900	69.5"	GCWD or crossing signal
DPS-2SA	6'-7"	2150	81.5"	wayside signal

NOTES:

1. FOR FOUNDATION HEIGHT AND GRADE ELEVATIONS, SEE 610.1. FOR GRADE CROSSING WARNING SYSTEMS, 400.1. FOR TRAIN CONTROL SIGNALS.
2. IF REQUIRED DEPTH OF BASE PLATE IS MORE THAN 5 FEET BELOW NATURAL GRADE, THE AREA WITHIN 6 FEET OF EXCAVATION MUST HAVE OVERBURDEN REMOVED TO A ONE FOOT DEPTH BELOW GRADE.
3. FOR ASSEMBLY PROCEDURES, REFER TO INSTRUCTIONS PROVIDED BY MANUFACTURER.
4. TOP OF FOUNDATION FOR CROSSING SIGNAL SHALL BE 4" ABOVE GRADE, TOP OF FOUNDATION FOR WAYSIDE SIGNALS SHALL NOT BE HIGHER THAN TOP OF RAIL OR LOWER THAN BASE OF RAIL.
5. USE: FOR WAYSIDE GROUND SIGNALS AND CROSSING SIGNALS.
6. APPLY NO-OX-ID GREASE TO BOLT THREADS ON BOTH ENDS.

MAIN INDEX

SUB INDEX

RAIL AMERICA
ENGINEERING SERVICES
STANDARDS REFERENCE MANUAL

Issue Date: 03-01-2009 Revised Date: 03-01-2009
Authorized: *Chris Harris*
Chief Engineer Signals and Communications

The material and equipment shown herein must meet or exceed all quality requirements. Any deviation from these standards must be submitted in writing and approved by the Railroad Director of Engineering Services prior to use.

**HOUSINGS, SIGNALS
AND FOUNDATIONS**

400 SERIES

**FOUNDATIONS - DPS-2A
(CROSSING OR WAYSIDE SIGNALS)**

SC431.1

SH. 1 OF 1