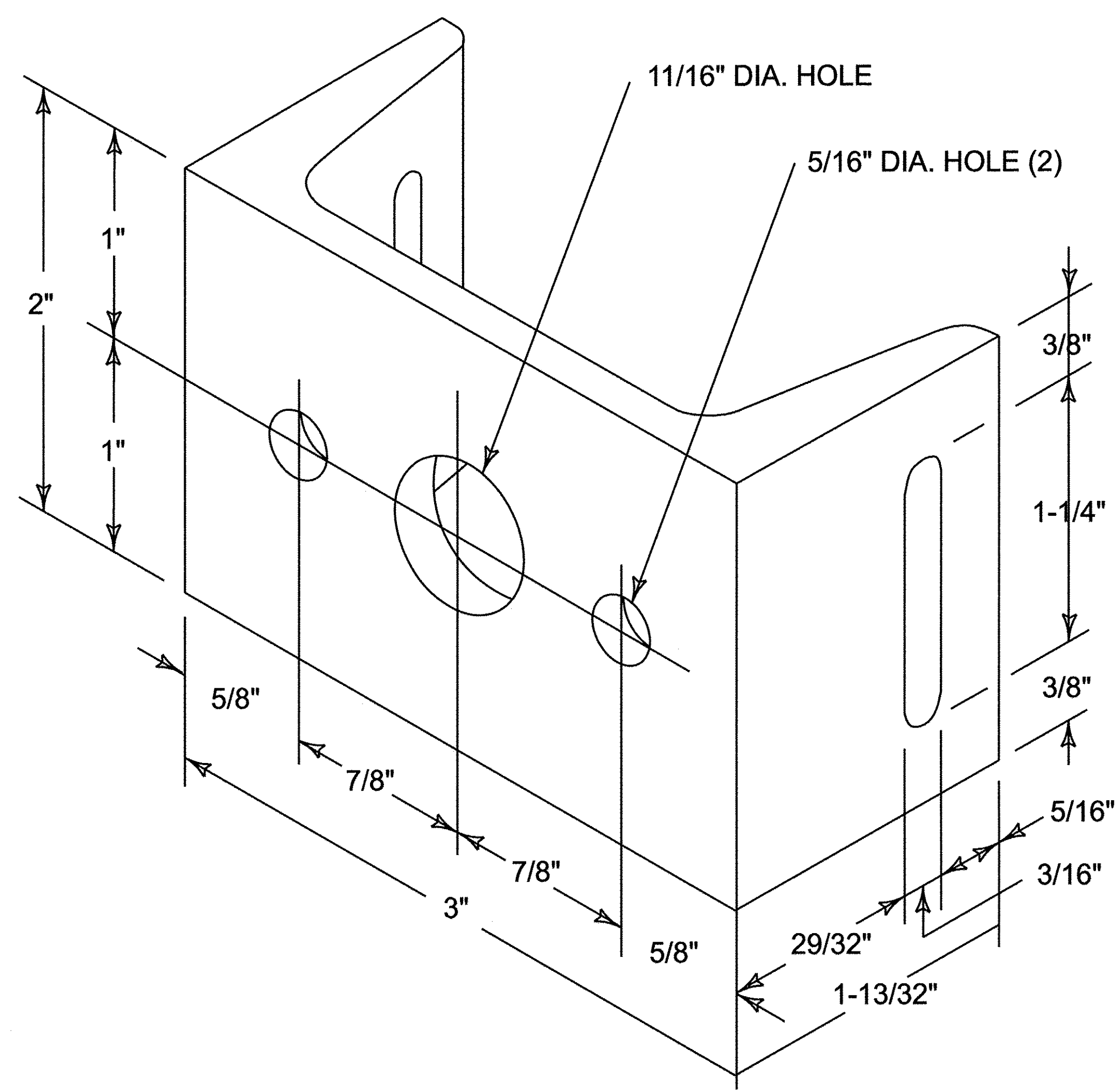
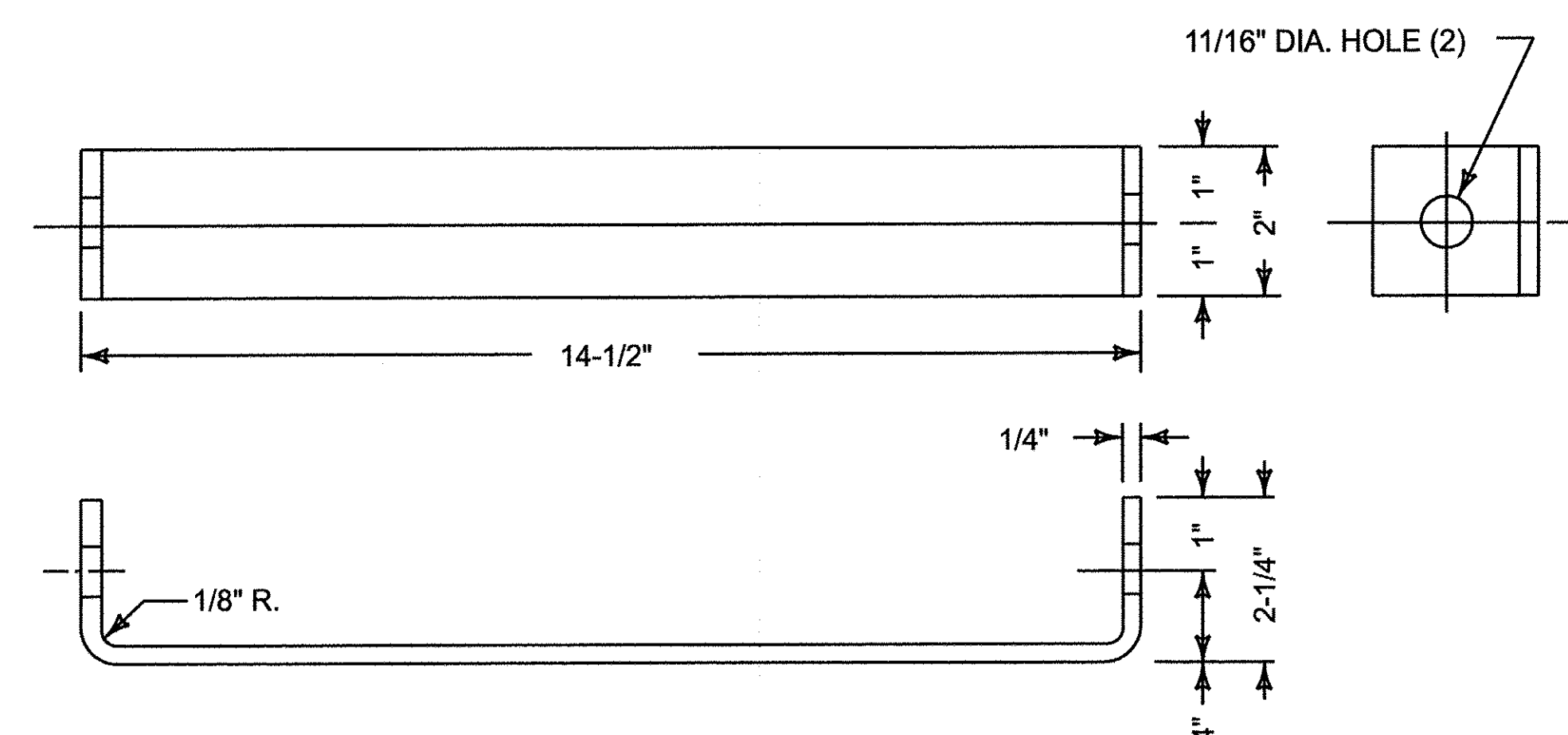


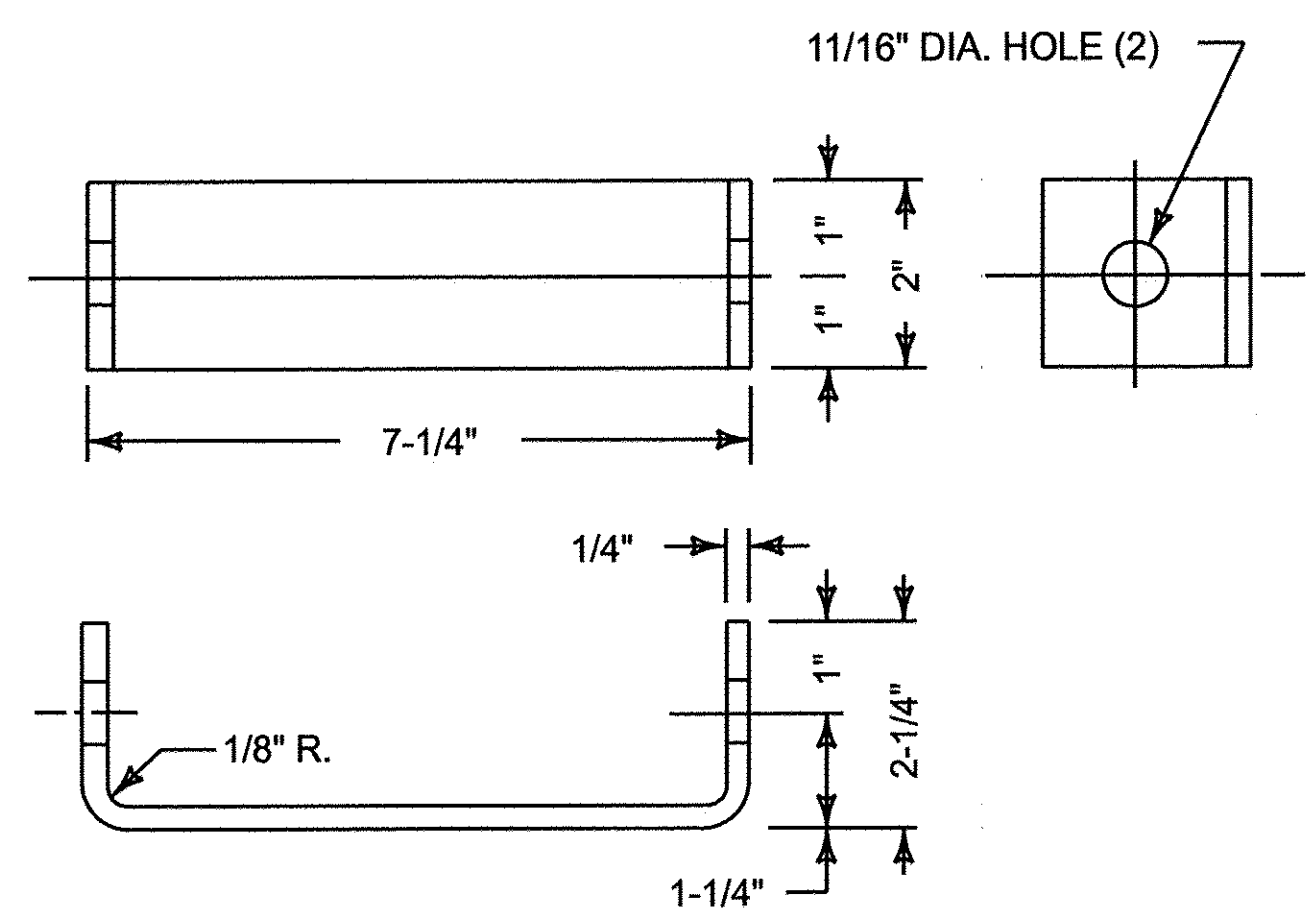
FILE
ES1024X.0
REVISIONS



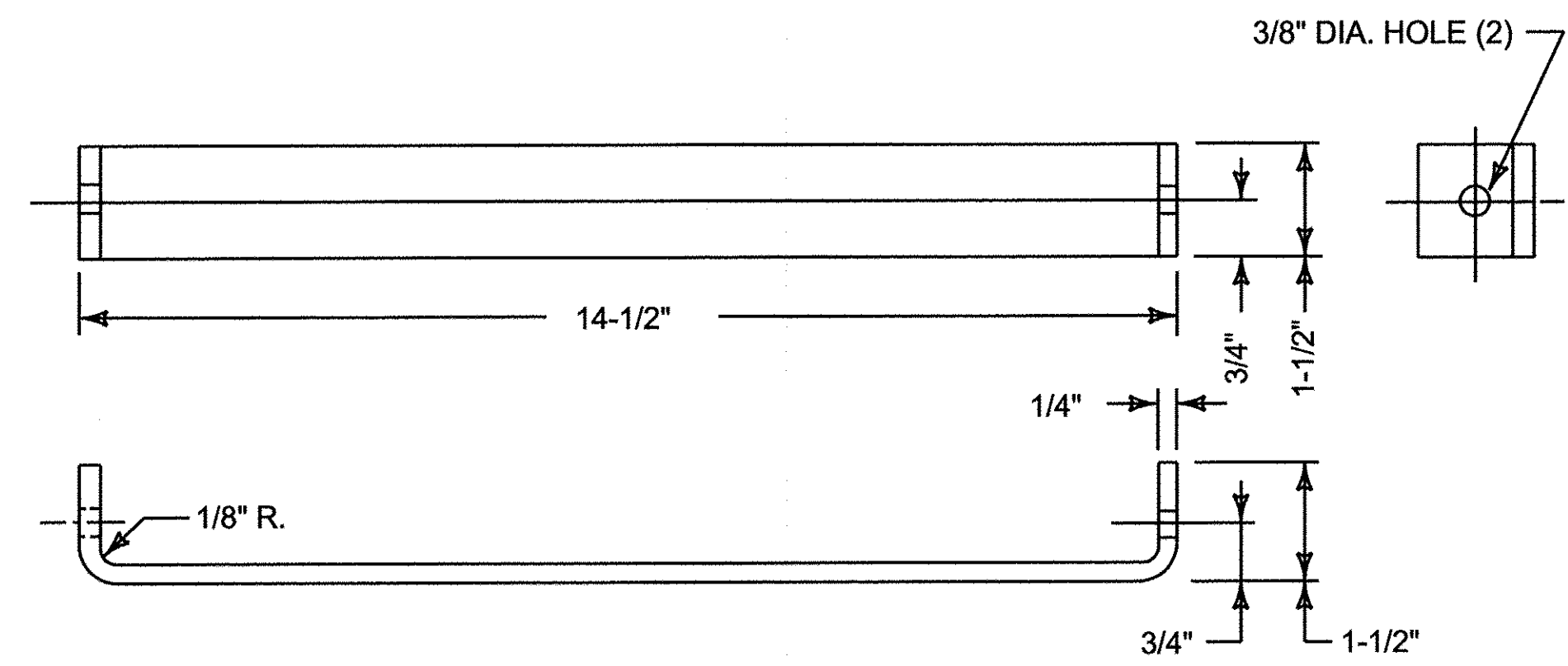
UNIVERSAL CHANNEL ADAPTER $\frac{22510}{020.0052385.1}$
3"x1-13/32"x2" LG.
ALUMINUM 6061-T6



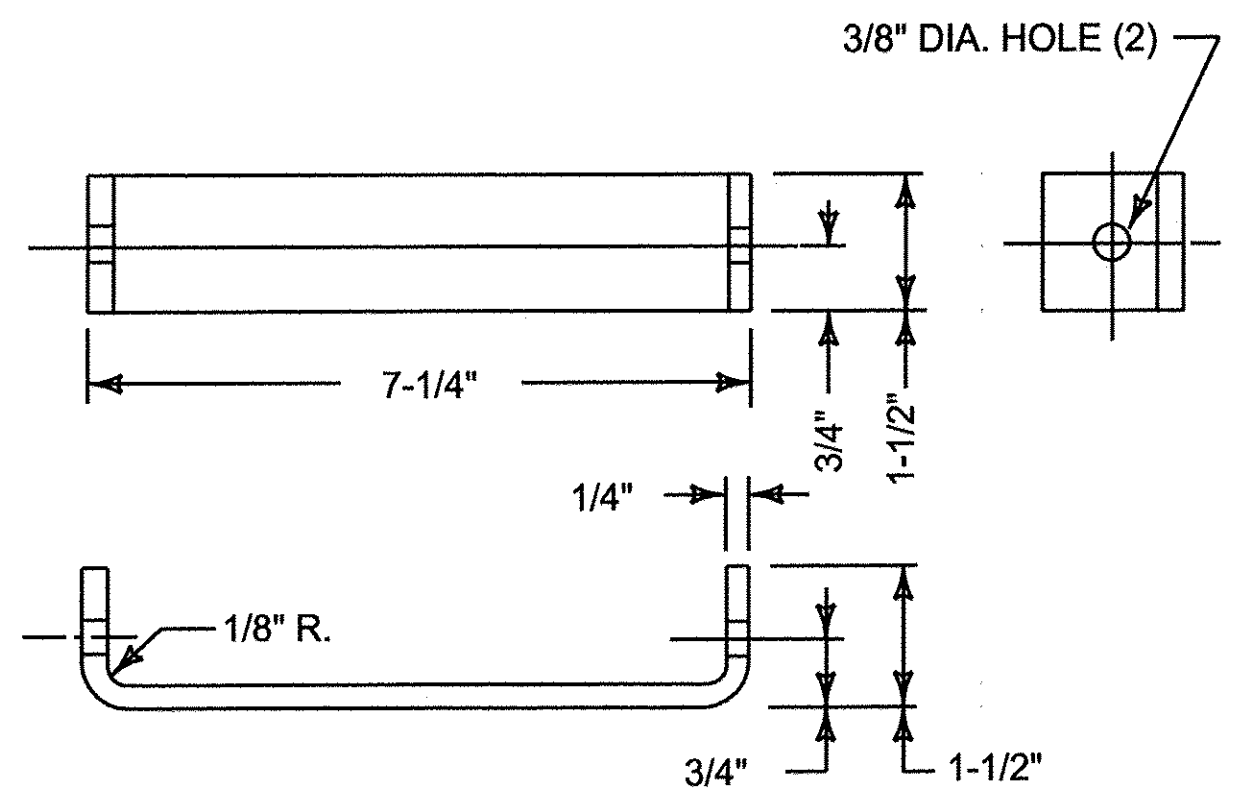
LONG EXTENSION ARM $\frac{22511}{020.0052480.1}$
ALUMINUM 6061-T6



SHORT EXTENSION ARM $\frac{22512}{020.0052470.1}$
ALUMINUM 6061-T6



LONG EXTENSION ARM $\frac{22513}{020.0052476.1}$
ALUMINUM 6061-T6



SHORT EXTENSION ARM $\frac{22514}{020.0052475.1}$
ALUMINUM 6061-T6

FASTENINGS FOR SIGNS	
BAND-IT CO. NO.	DESCRIPTION
C206	BAND, 3/4" STAINLESS STEEL (ORDER BY FT., 100 FT. ROLL MIN.)
C256	BUCKLE, 3/4" STAINLESS STEEL (100/BOX, MIN.)
C726 *	BUCKLE, 3/4" STAINLESS STEEL - SCRU-LOCK
C001	TOOL, BAND-IT APPLICATION (WITH SPINNING GRIPS)

*USE ONLY WHEN SPACE LIMITS THE APPLICATION OF TOOL APPLIED BUCKELS (NO.C256)