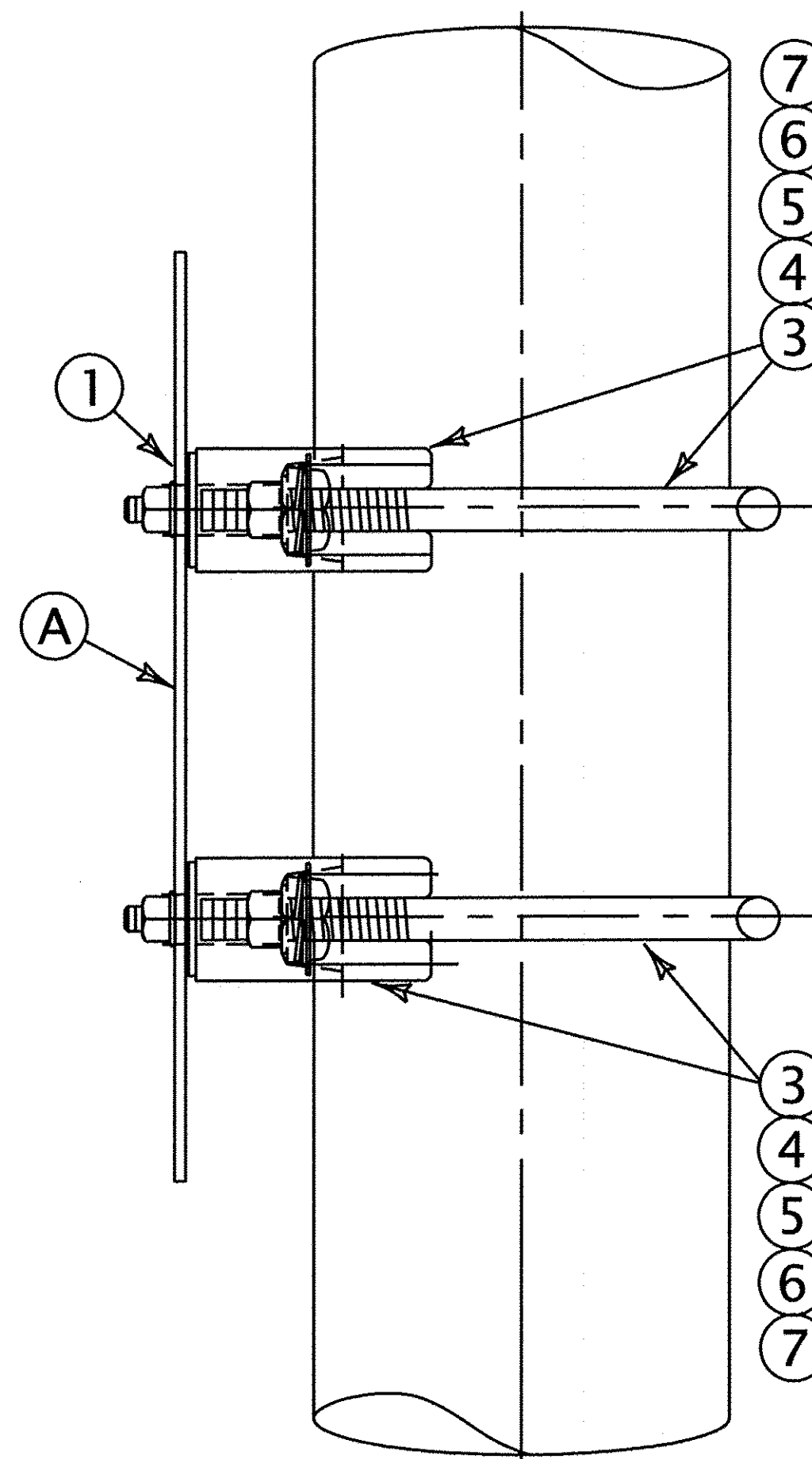


FILE
ES1024X.0
REVISIONS



FRONT VIEW

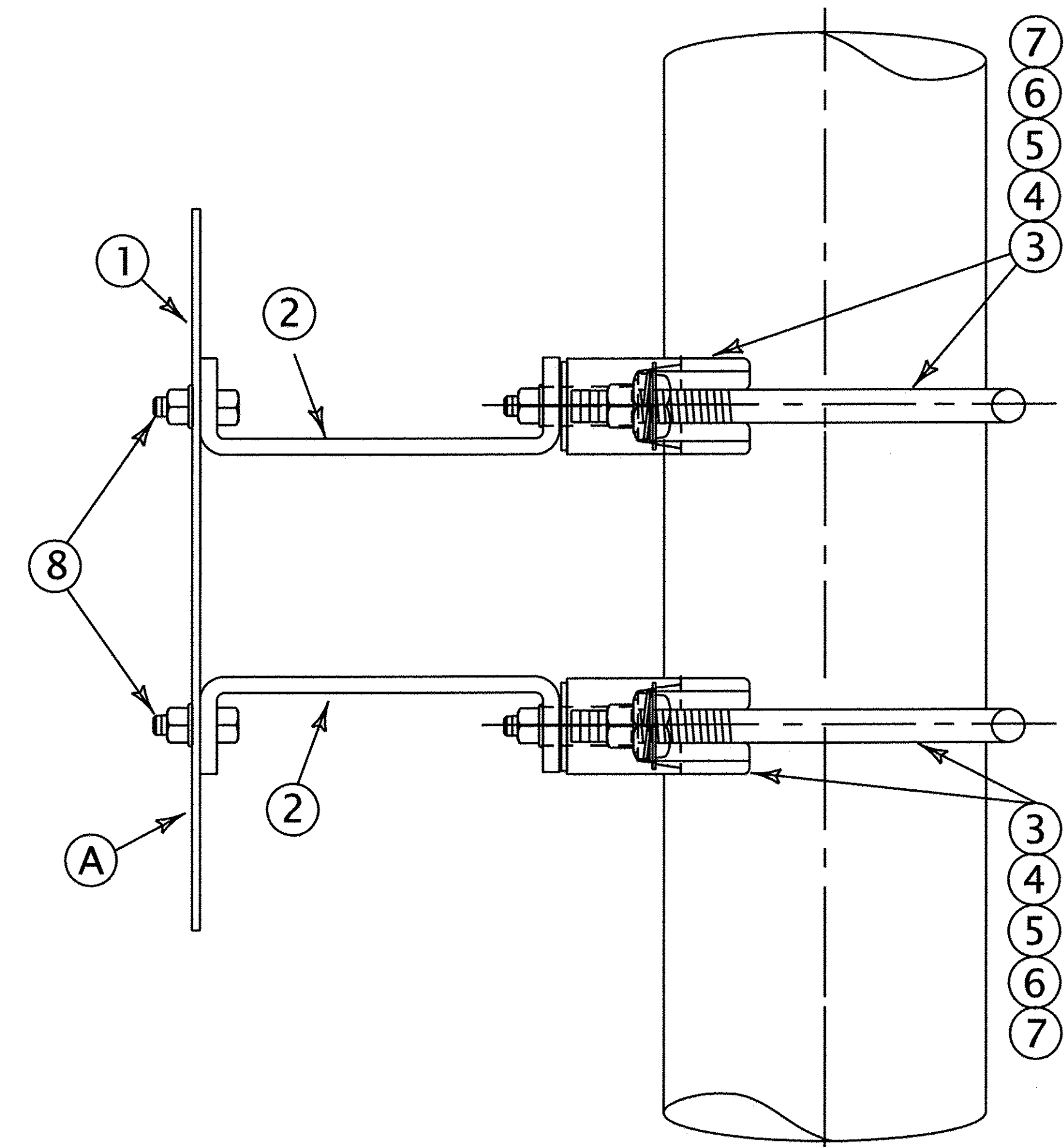
Emergency Notification Sign (ENS)



SIDE VIEW

(W/O EXTENSION BRACKET)

FOR FLASHING LIGHT SIGNAL MAST
ALSO FOR MAIN MAST OF CANTILEVER



SIDE VIEW

(WITH EXTENSION BRACKET)

FOR AUTOMATIC CROSSING GATE MAST

MATERIALS		
REF. NO.	DESCRIPTION	ITEM NUMBER
—	SIGN, VANDAL RESISTANT 1/4"x3/4" EXTRUDED ALUMINUM	
1	SIGN, EMERGENCY NOTIFICATION (ENS)	
2	ARM EXTENSION (AS REQUIRED-SEE ES1024 SH.2)	
3	4" & 5" MAST MOUNTING ASSY. COMPLETE WITH U-BOLT, 5/16" STUD BOLT & HARDWARE	
4	6" MAST MOUNTING ASSY. COMPLETE WITH U-BOLT, 5/16" STUD BOLT & HARDWARE	
5	8" MAST MOUNTING ASSY. COMPLETE WITH U-BOLT, 5/16" STUD BOLT & HARDWARE	
6	10" MAST MOUNTING ASSY. COMPLETE WITH U-BOLT, 5/16" STUD BOLT & HARDWARE	
7	12" MAST MOUNTING ASSY. COMPLETE WITH U-BOLT, 5/16" STUD BOLT & HARDWARE	
8	BOLT ASSY, 5/16"-11 x 1" LG., HEX HD., SS CAP SCREW W/ SS HEX NUT, SS FLAT WASHERS & SS LOCK WASHERS	

SPECIFICATIONS:

- (A) Sign Blade: 0.080" Thick Specifications 6061-T6 or 5062-H38. Holes to be 7/16" dia., to be degreased and etched prior to the application of reflective sheeting. Refer to AREMA Signal Manual 3.2.75-2.
- (B) Facing: Blue, Engineering grade High-Intensity retro-reflective sheeting in compliance with the latest edition of Federal Specification #L-S-300C.
- (C) Letters: White silkscreen, Scotchcal or equal, U.S. Department of Transportation Series D Alphabet.

NOTES:

- 1 - Order mounting bracket assemblies separately see Ref. No. 3,4,5,6,7, and 8 above.
- 2 - See Sheet 2 for detailed installation and maintenance instructions.
- 3 - This sign is to be installed in addition to standard metal crossing US.DOT/AAR sign for all highway crossing signals.