

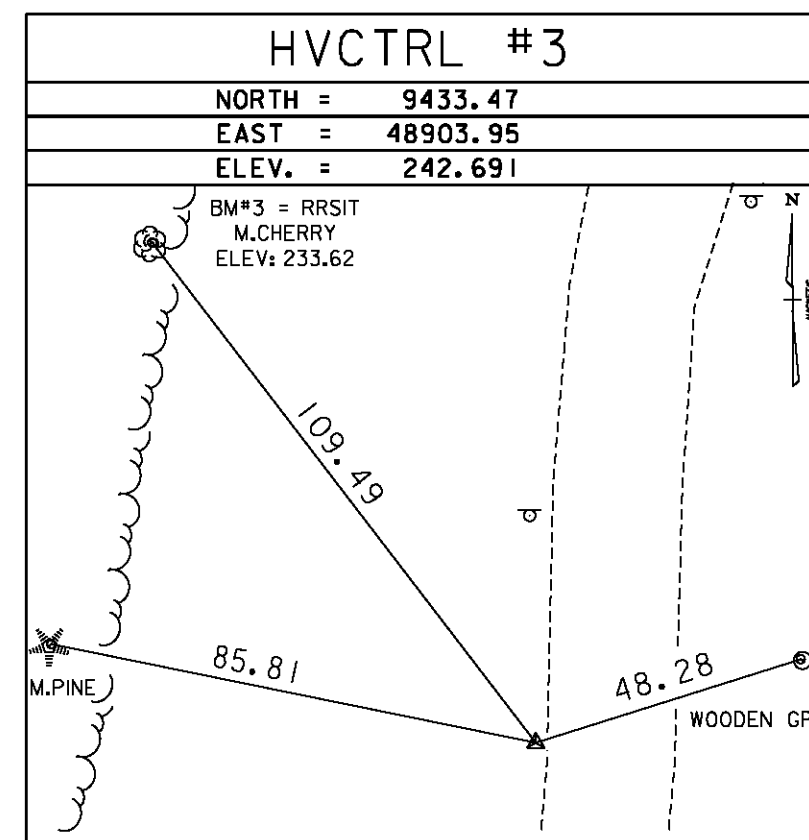
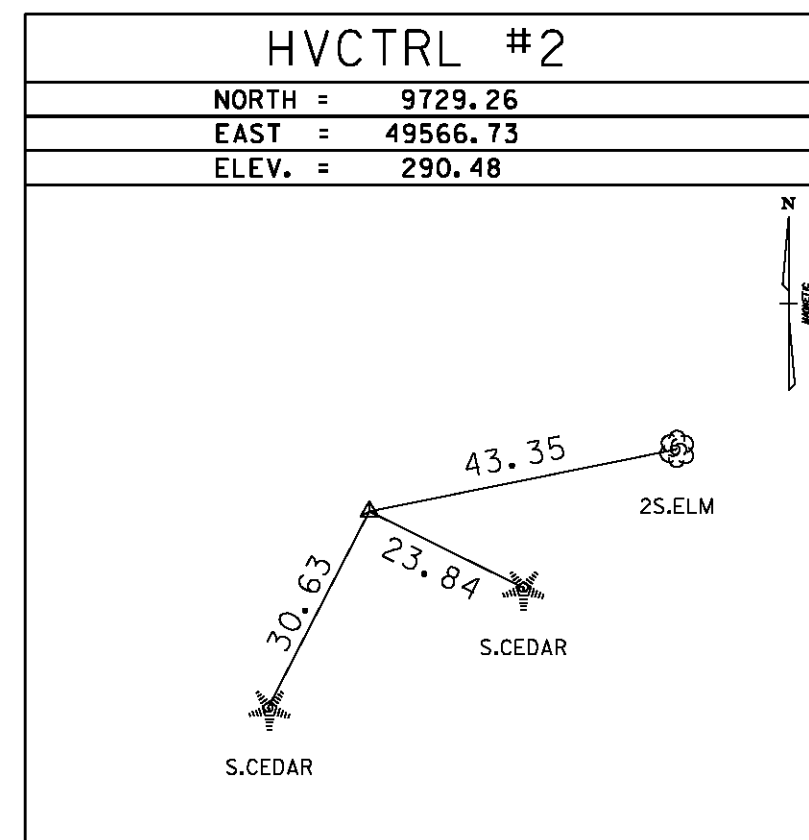
GPS CONTROL POINTS

HVCTRL # 1
D 64

NORTH = 10000.00
EAST = 50000.00
ELEV. = 321.19

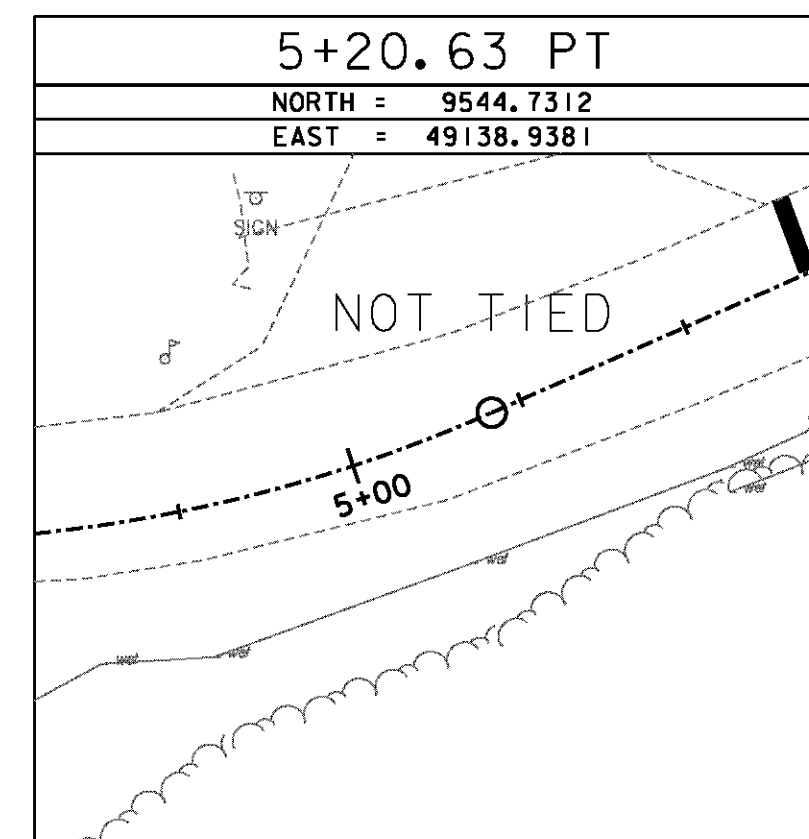
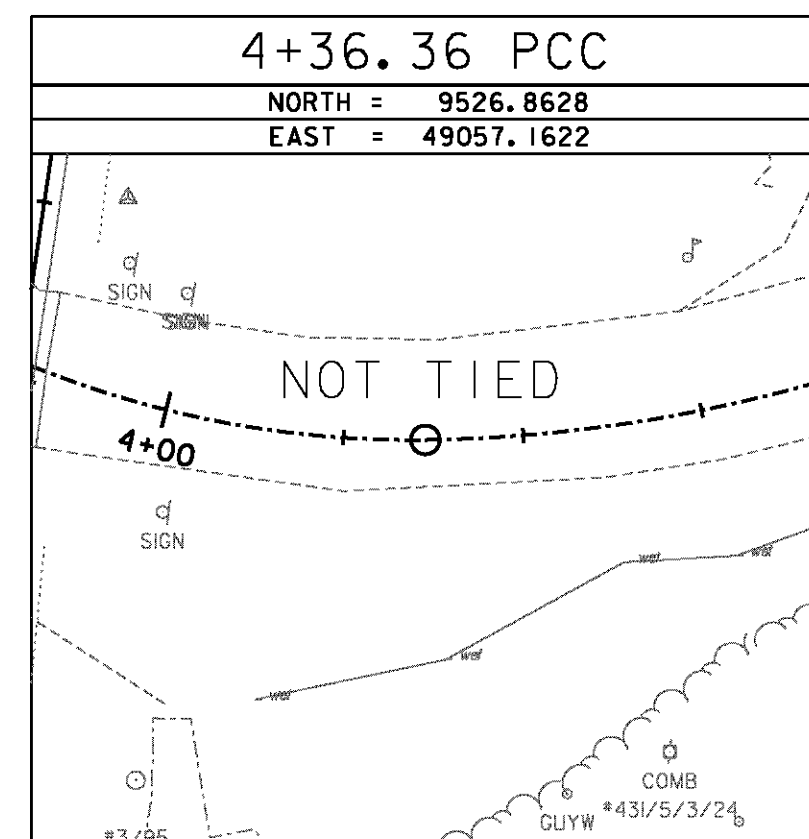
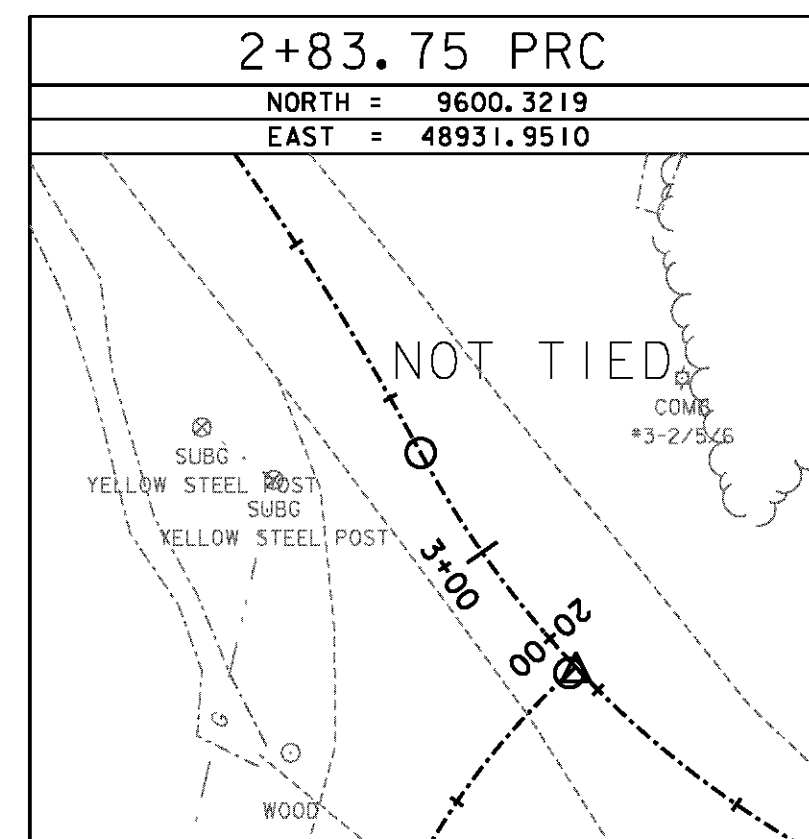
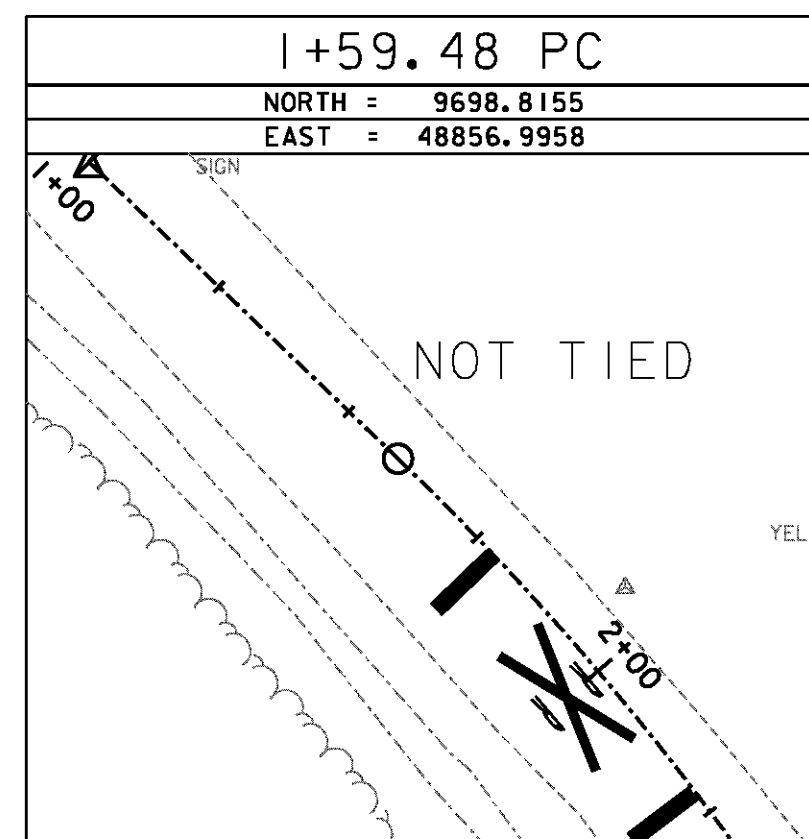
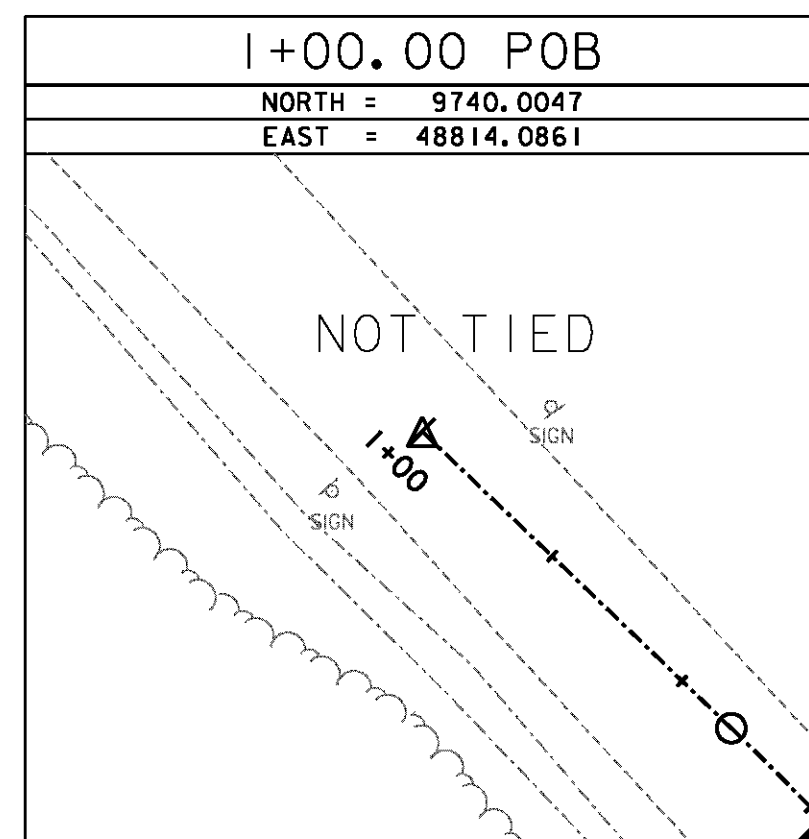
DESCRIBED BY NATIONAL GEODETIC SURVEY 1984
9.3 KM (5.8 MI) SOUTH FROM SWANTON,
0.2 KM (0.1 MI) NORTHWEST ALONG STATE HIGHWAY 78 FROM THE BRIDGE OVER
MISSISSQUOI RIVER IN SWANTON, THENCE 2.0 KM (1.25 MI) SOUTH ALONG RIVER
STREET, THENCE 2.7 KM (1.7 MI) SOUTHEAST ALONG A COUNTY ROAD, THENCE
4.4 KM (2.75 MI) SOUTH ALONG U.S. HIGHWAY 7 TO THE MARK ON THE LEFT
ALSO 6.3 KM (3.9 MI) NORTH ALONG U.S. HIGHWAY 7 FROM THE POST OFFICE
IN ST. ALBANS, 9.9 METERS (32.5 FT) NORTHEAST OF THE CENTERLINE OF
THE HIGHWAY. THE MARK IS 1.3 METERS NW FROM A WITNESS POST.
THE MARK IS 0.45 M ABOVE HIGHWAY.

TRAVERSE TIES



* Main Traverse Completed 12/06/2005 by G.Hitchcock PC & J.Hulet+

ALIGNMENT POINTS
COMSTOCK ROAD



DATUM	
VERTICAL	NAVD 88
HORIZONTAL	ASSUMED
ADJUSTMENT	None

PROJECT NAME:	SWANTON
PROJECT NUMBER:	STP 2038(16)
FILE NAME:	...drawing\Plot-Files\06-File.p1PLOT DATE: 8/26/2011
PROJECT LEADER:	G. EDWARDS
DESIGNED BY:	KJR
TIE SHEET 1	DRAWN BY: KJR CHECKED BY: GAE SHEET 6 OF 25

