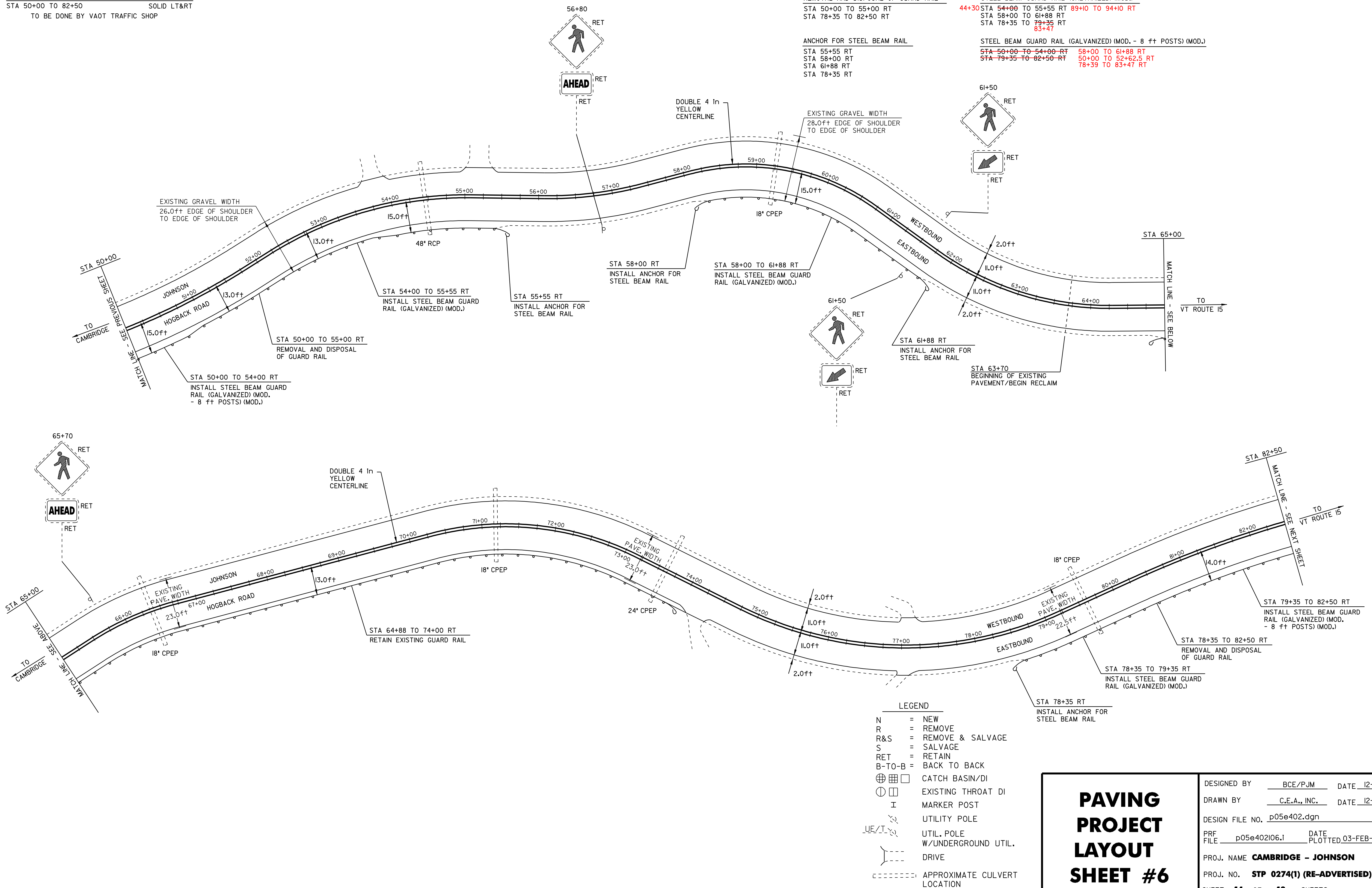


REMOVAL AND DISPOSAL OF GUARD RAIL
 STA 50+00 TO 55+00 RT
 STA 78+35 TO 82+50 RT

STEEL BEAM GUARD RAIL (GALVANIZED) (MOD.)
 44+30 STA 54+00 TO 55+55 RT 89+10 TO 94+10 RT
 STA 58+00 TO 61+88 RT
 STA 78+35 TO 79+35 RT 83+47

ANCHOR FOR STEEL BEAM RAIL
 STA 55+55 RT
 STA 58+00 RT
 STA 61+88 RT
 STA 78+35 RT

STEEL BEAM GUARD RAIL (GALVANIZED) (MOD. - 8 ft POSTS) (MOD.)
 STA 50+00 TO 54+00 RT 58+00 TO 61+88 RT
 STA 79+35 TO 82+50 RT 50+00 TO 52+62.5 RT
 78+39 TO 83+47 RT



LEGEND

N	=	NEW
R	=	REMOVE
R&S	=	REMOVE & SALVAGE
S	=	SALVAGE
RET	=	RETAIN
B-TO-B	=	BACK TO BACK
⊕	=	CATCH BASIN/DI
⊙	=	EXISTING THROAT DI
I	=	MARKER POST
⋈	=	UTILITY POLE
⋈/⋈	=	UTIL. POLE W/UNDERGROUND UTIL.
---	=	DRIVE
---	=	APPROXIMATE CULVERT LOCATION

PAVING PROJECT LAYOUT SHEET #6

DESIGNED BY	BCE/PJM	DATE	12-05
DRAWN BY	C.E.A., INC.	DATE	12-05
DESIGN FILE NO.	p05e402.dgn		
PRF FILE	p05e402i06.1	DATE PLOTTED	03-FEB-2009 13
PROJ. NAME	CAMBRIDGE - JOHNSON		
PROJ. NO.	STP 0274(1) (RE-ADVERTISED)		
SHEET	14	OF	18 SHEETS