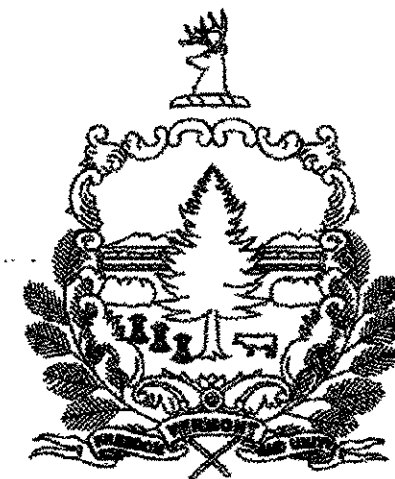


# STATE OF VERMONT AGENCY OF TRANSPORTATION

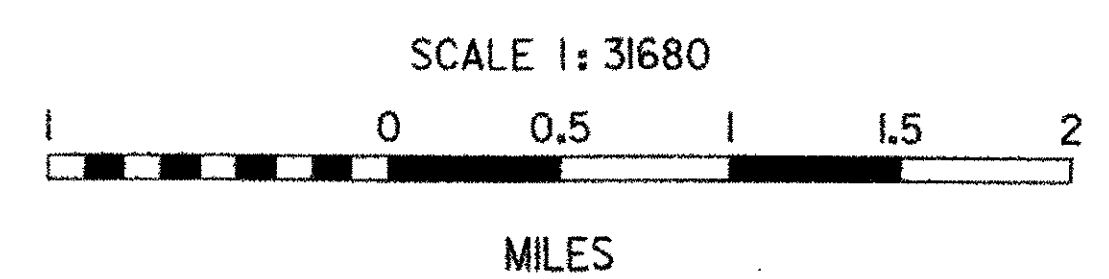
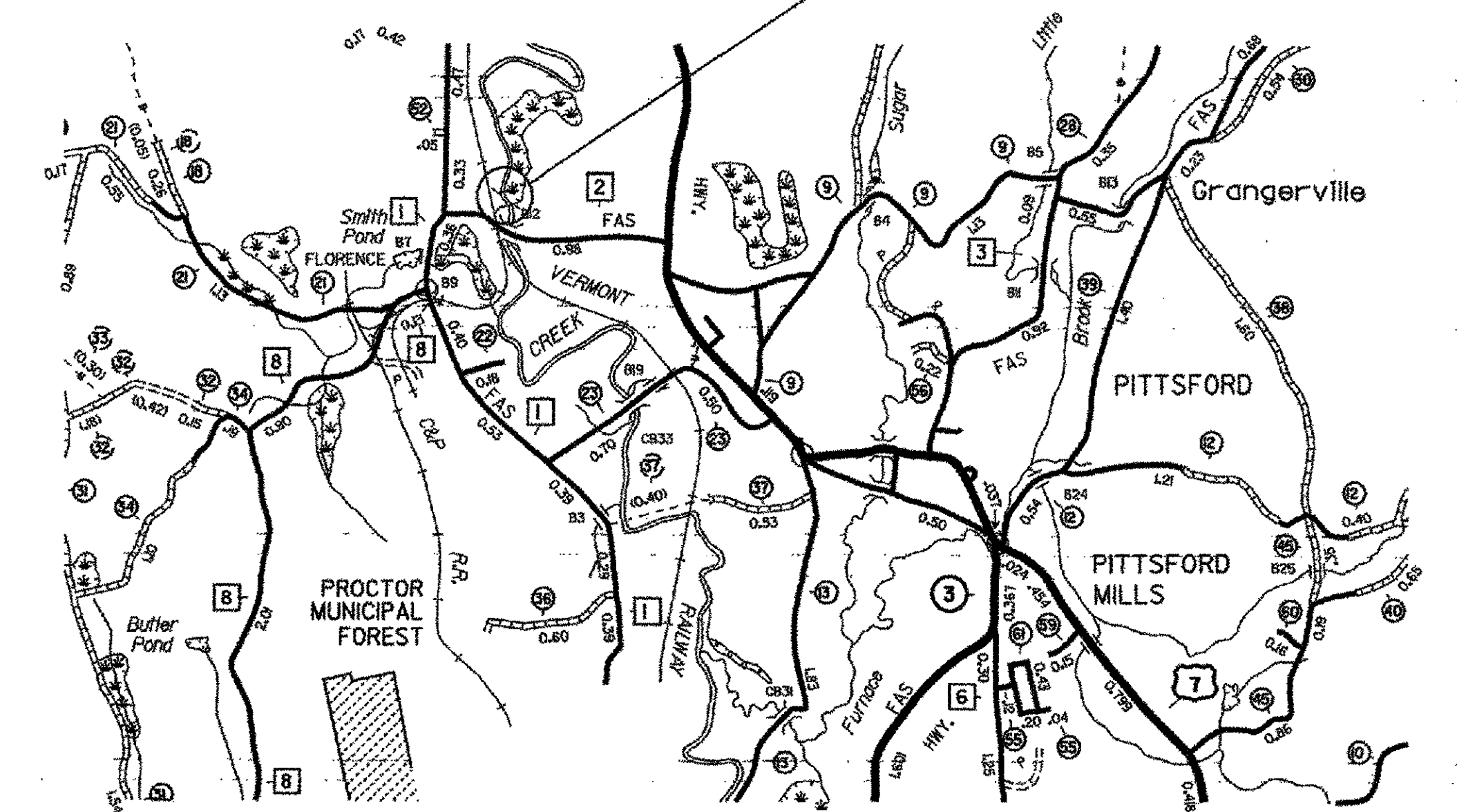
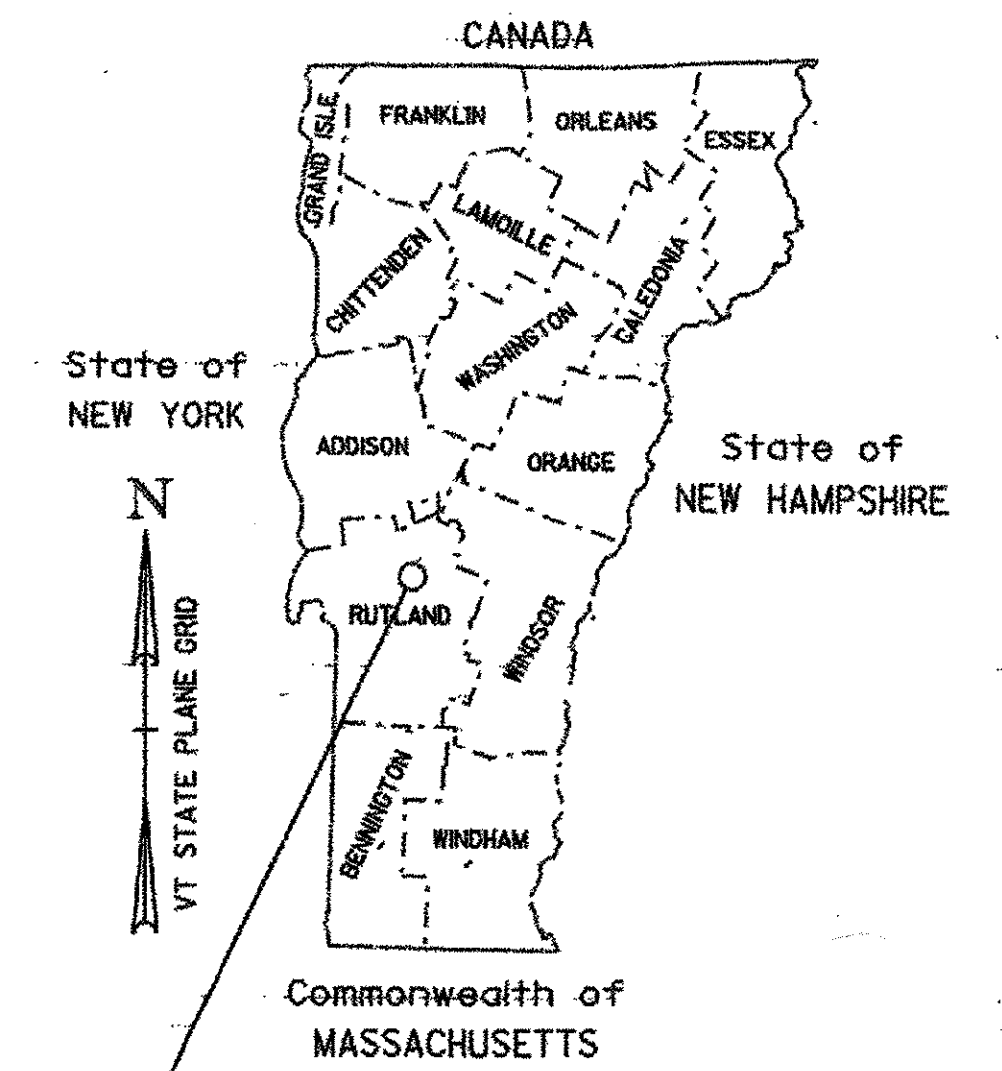


## PROPOSED IMPROVEMENT BRIDGE PROJECT

TOWN OF PITTSFORD  
COUNTY OF RUTLAND

PROJECT LOCATED APPROXIMATELY 200' DOWNSTREAM OF BRIDGE 12 ON FAS 155 (TOWN HIGHWAY 2) OVER THE OTTER CREEK.  
PROJECT DESCRIPTION: THE PROJECT SHALL CONSIST OF STABILIZATION OF THE HAMMOND COVERED BRIDGE.

LENGTH OF STRUCTURE: 140+/- FEET, FACE TO FACE OF BACKWALLS.  
LENGTH OF PROJECT: 140+/- FEET



### INDEX OF SHEETS

- 1. TITLE SHEET
- 2. NOTES & QUANTITIES
- 3.-5. CONSTRUCTION DETAIL SHEETS

### VAOT STANDARD SHEETS

- E-100A SIDE ROAD CONSTRUCTION APPROACH SIGNS - 1/02/04
- E-102 CONSTRUCTION SIGN DETAILS - 6/30/03

#### CONVENTIONAL SYMBOLS

COUNTY LINE	
TOWN LINE	
LIMITS OF ACCESS	
POINT OF ACCESS	
FENCE LINE	
STONE WALL	
TRAVELED WAY	
GUARD RAIL	
RAILROAD	
SURVEY LINE	
CULVERT	
POWER POLE	
TELEPHONE POLE	
TREES	
CONTROL OF ACCESS	
PROPERTY LINE	
R.O.W. TAKING LINE	
SLOPE RIGHTS	
TOP OF CUT	
TOE OF SLOPE	

SURVEYED BY :  
SURVEYED DATE :

DATUM  
VERTICAL  
HORIZONTAL

#### RECORD PLANS

CONTRACTOR: ALPINE CONSTRUCTION L.L.C. - SCHUYLerville, NY  
RESIDENT ENGINEER: MARK MACKINTOSH  
CONSTRUCTION BEGAN: JULY 19, 2005  
CONSTRUCTION COMPLETE: NOVEMBER 18, 2005  
RECORD PLANS BY: MARK MACKINTOSH & N. GARBACIK

I HEREBY CERTIFY THAT ALL THE CONSTRUCTION REQUIRED BY THIS SET OF DRAWINGS HAS BEEN ACCOMPLISHED AS INDICATED HEREIN.

BY RESIDENT ENGINEER  
DATE 2/28/07

NOTE: Any further information concerning final quantities, amounts or other details relative to this project may be found at Central Files in the electronic archives.

THESE PLANS ARE SUBJECT TO SUCH ENGINEERING CHANGES AS MAY BE REQUIRED BY THE DIRECTOR OF PROGRAM DEVELOPMENT.  
CONSTRUCTION IS TO BE CARRIED ON IN ACCORDANCE WITH THESE PLANS AND THE STANDARD SPECIFICATIONS FOR CONSTRUCTION DATED 2001, AS APPROVED BY THE FEDERAL HIGHWAY ADMINISTRATION ON JANUARY 4, 2001 FOR USE ON THIS PROJECT, INCLUDING ALL SUBSEQUENT REVISIONS AND SUCH REVISED SPECIFICATIONS AND SPECIAL PROVISIONS AS ARE INCORPORATED IN THESE PLANS.

DEPARTMENT OF TRANSPORTATION

APPROVED \_\_\_\_\_ DATE \_\_\_\_\_

DIRECTOR OF PROGRAM DEVELOPMENT

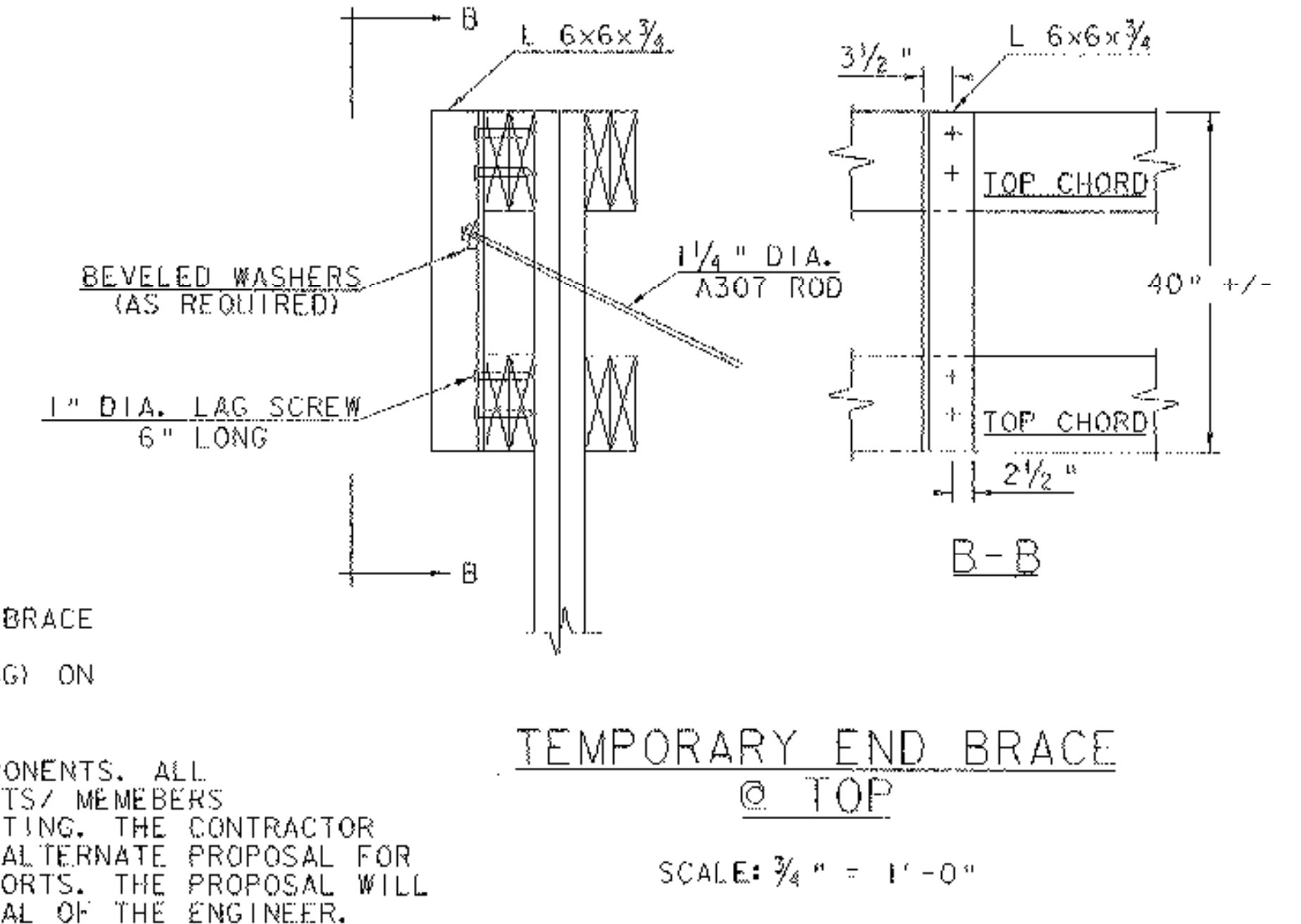
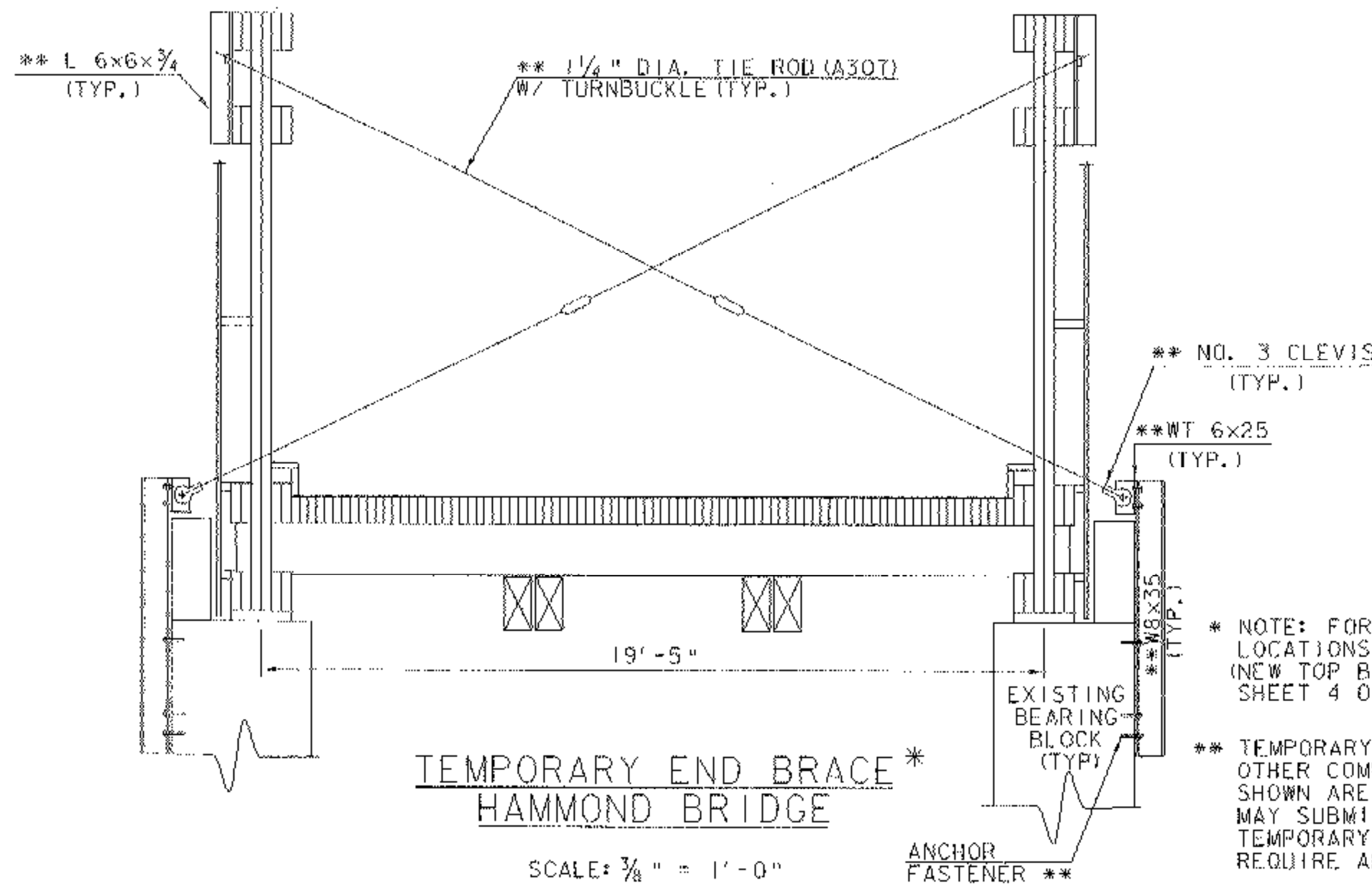
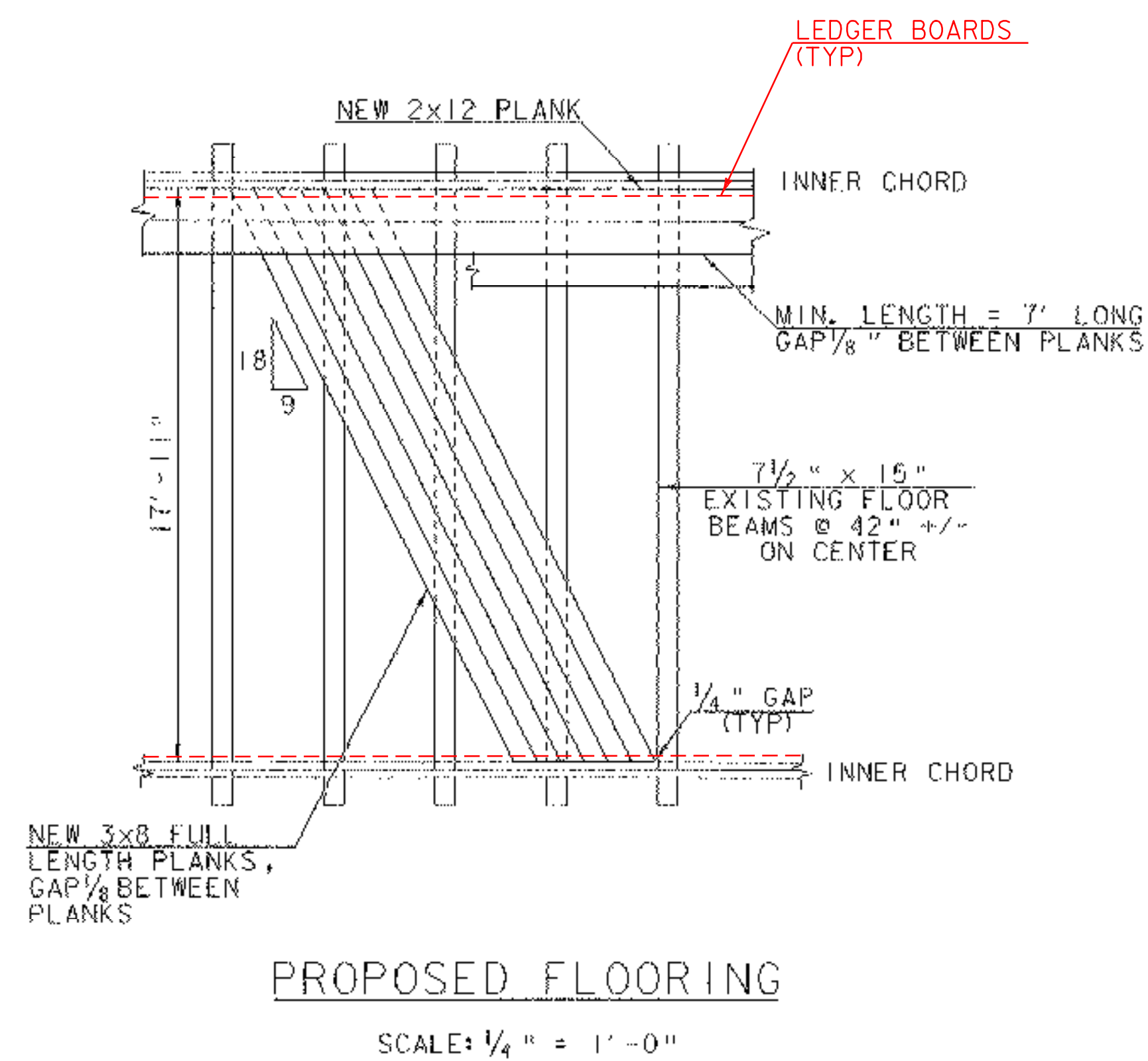
APPROVED DATE 1/22/07

PROJECT MANAGER : J. WEAVER

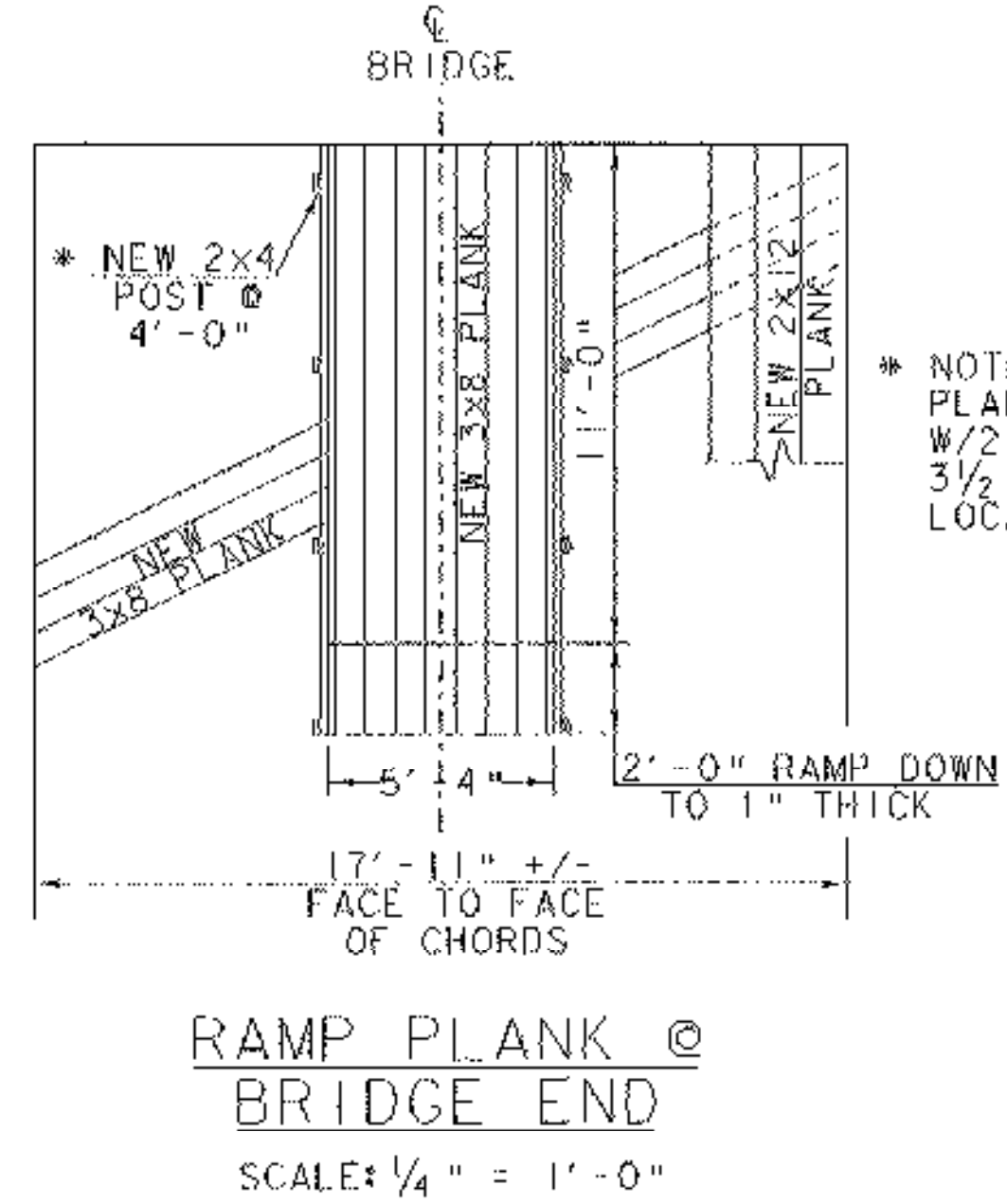
PROJECT : PITTSFORD ST HMND (1)

SHEET J OF 5 SHEETS

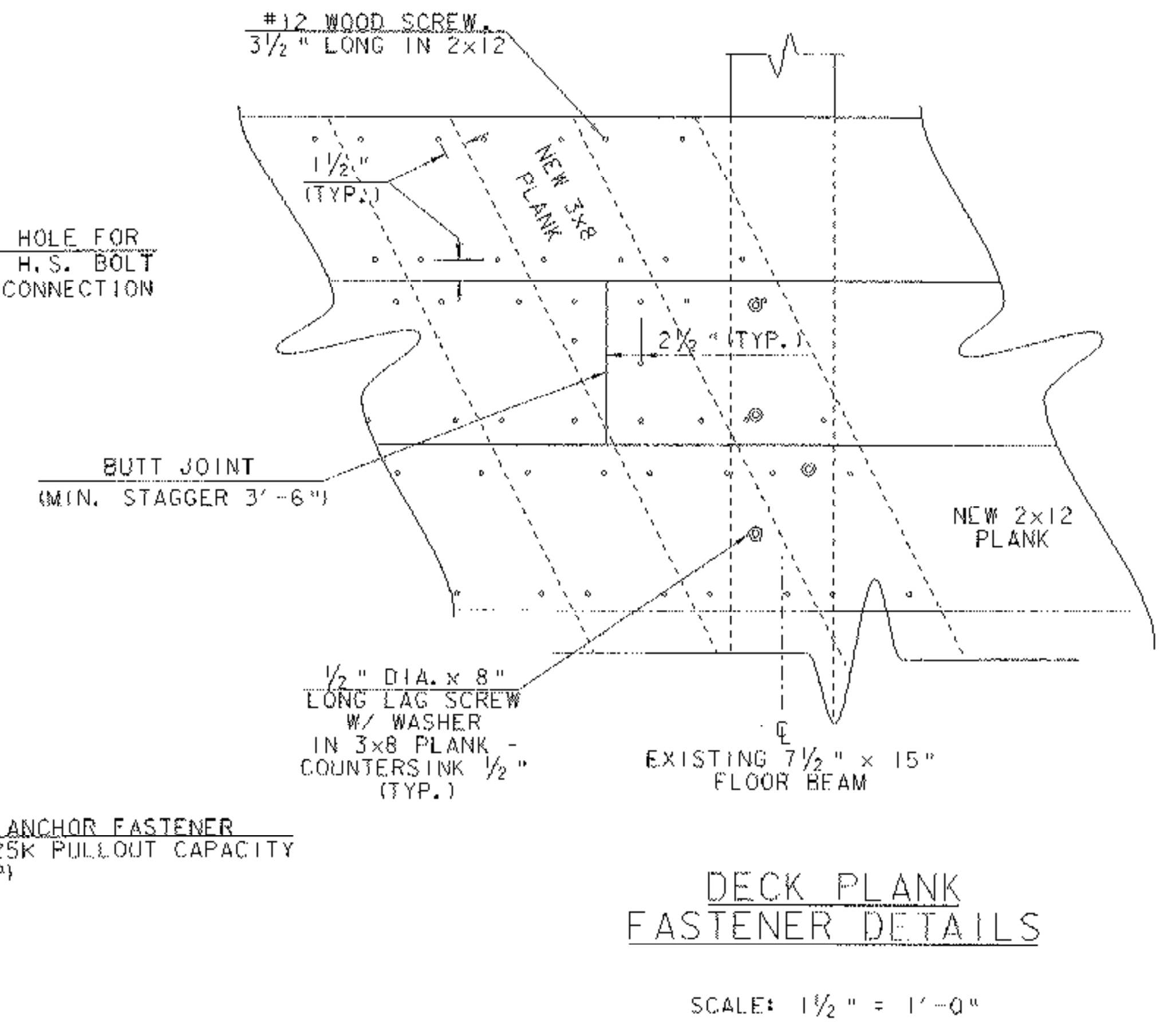
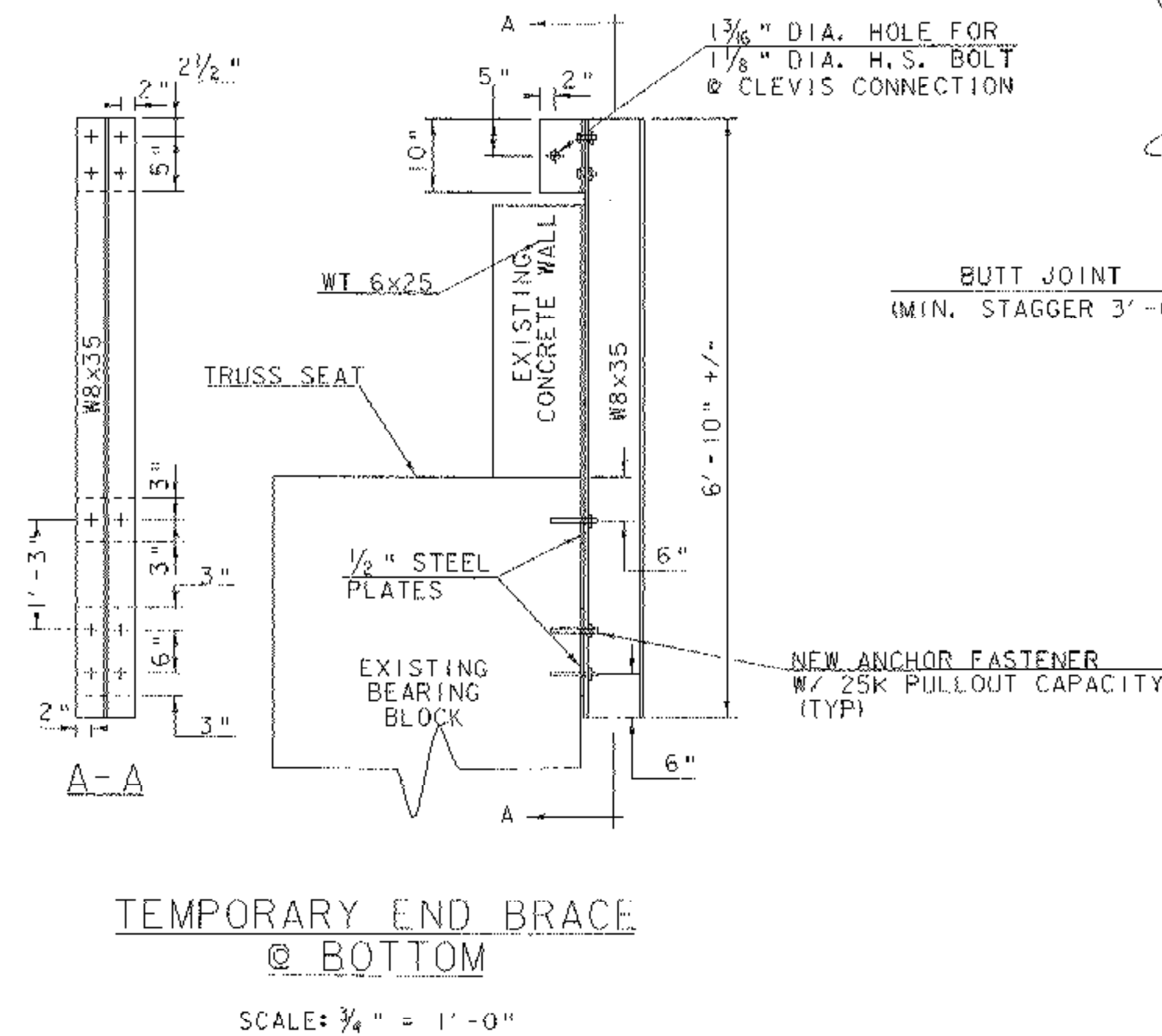
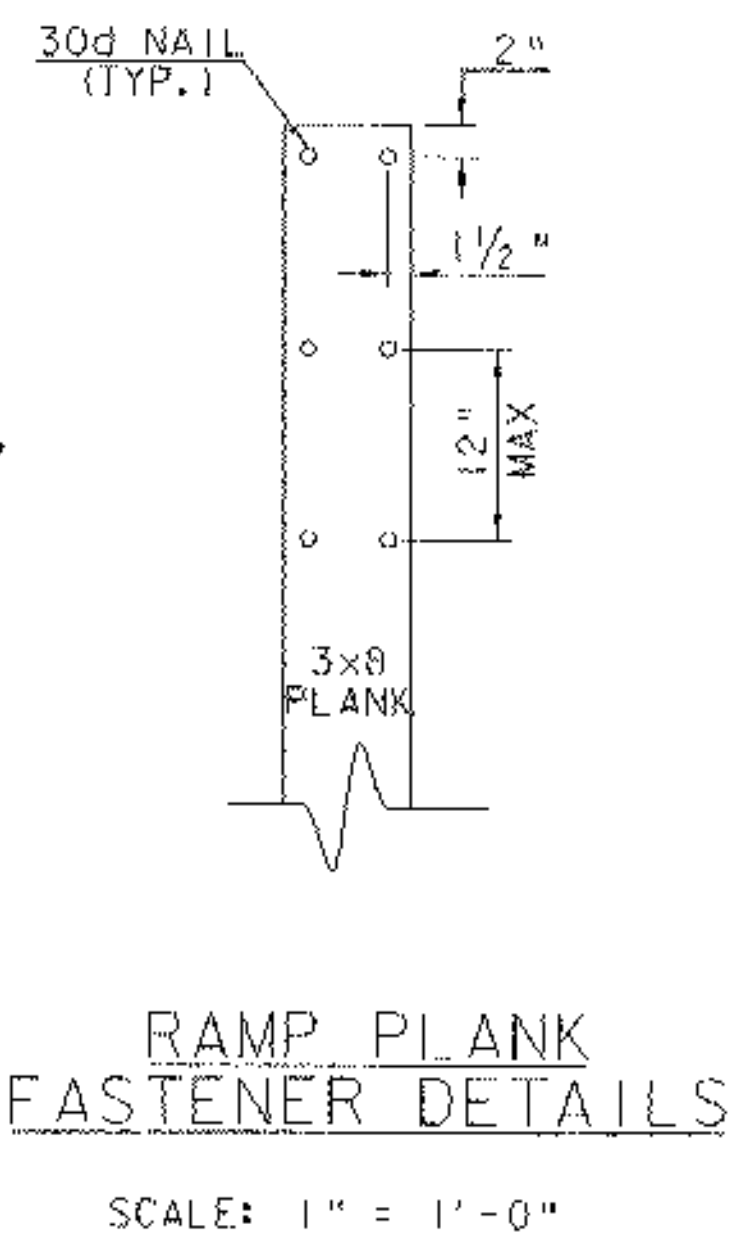




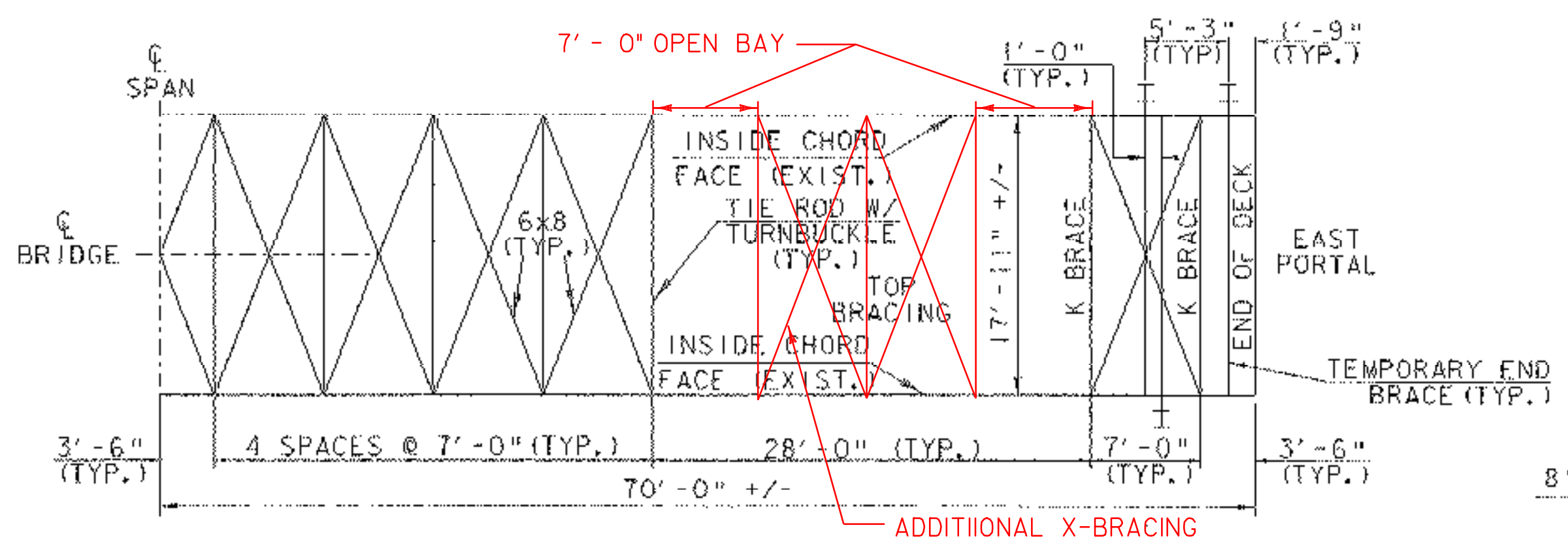
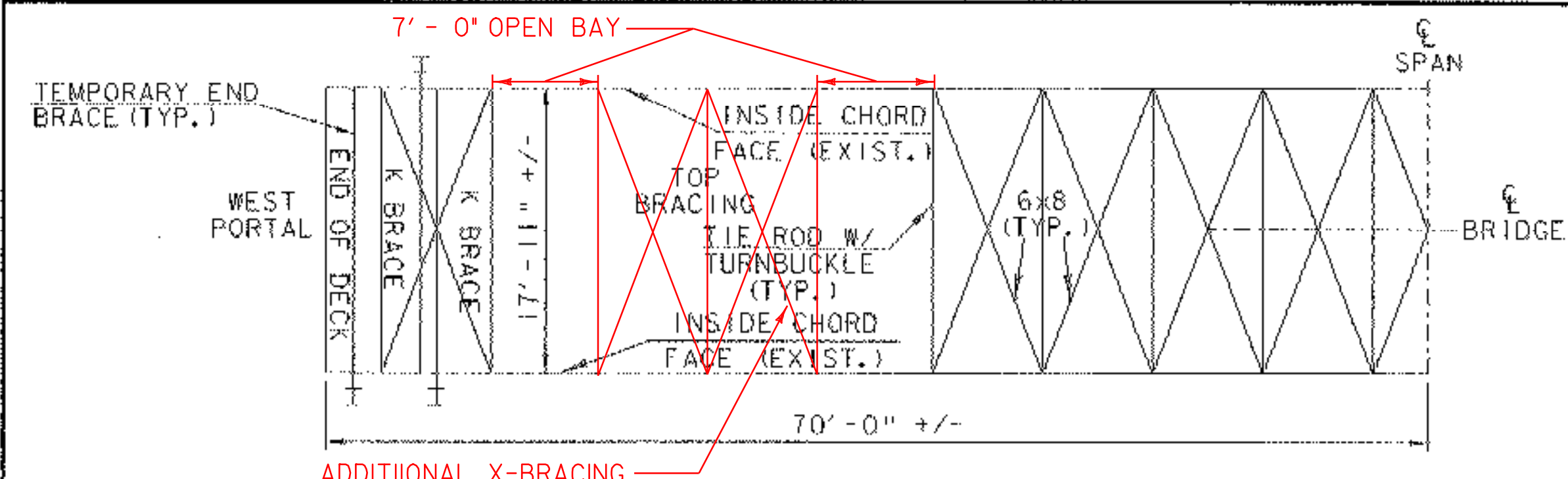
\* NOTE: FOR END BRACE LOCATIONS, SEE (NEW TOP BRACING) ON SHEET 4 OF 5.  
\*\* TEMPORARY COMPONENTS. ALL OTHER COMPONENTS/ MEMBERS SHOWN ARE EXISTING. THE CONTRACTOR MAY SUBMIT AN ALTERNATE PROPOSAL FOR TEMPORARY SUPPORTS. THE PROPOSAL WILL REQUIRE APPROVAL OF THE ENGINEER.



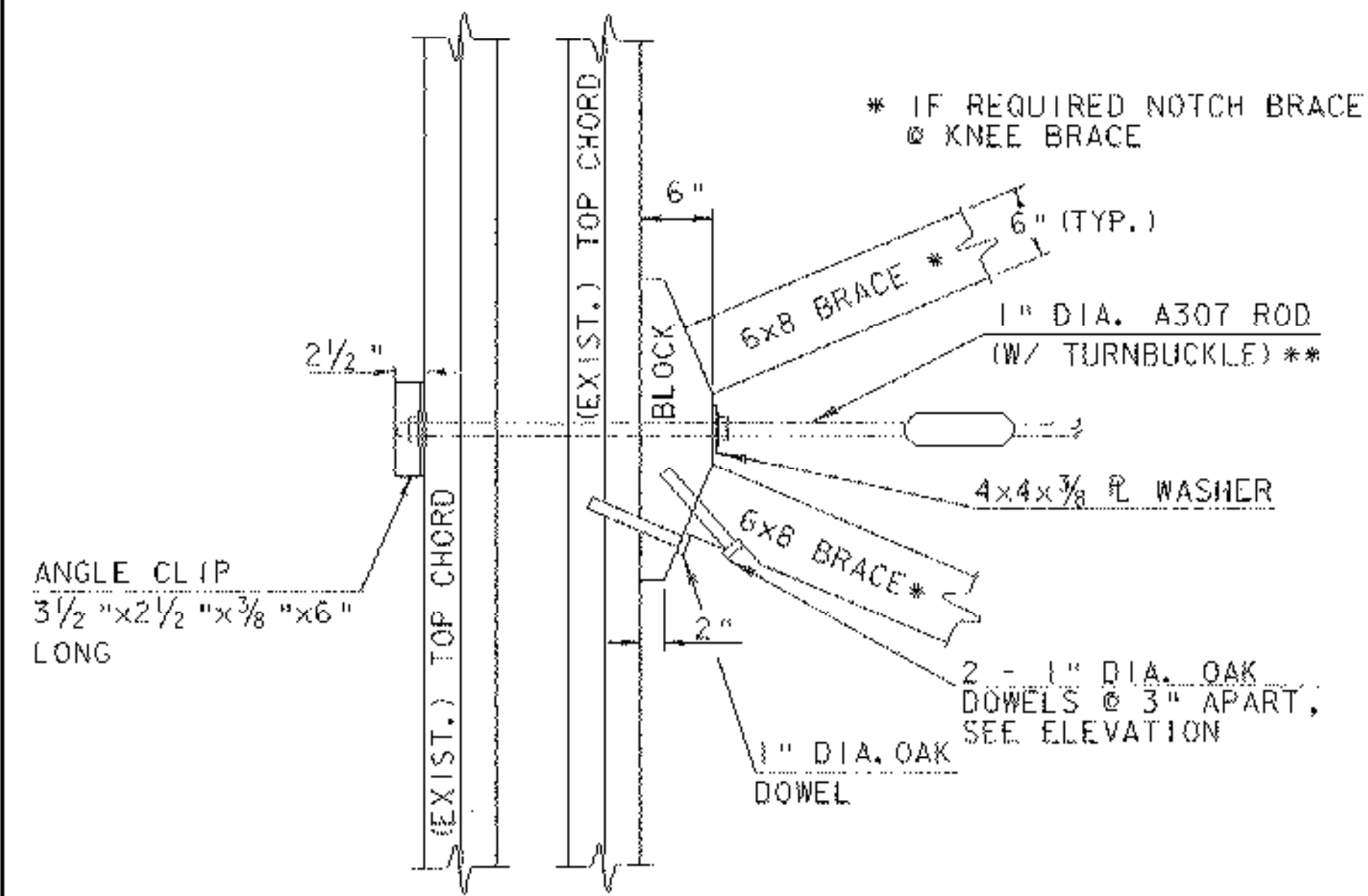
\* NOTE: ATTACH TO RAMP PLANKS AND RAILINGS W/ 2 - #12 WOOD SCREWS, 3 1/2" LONG @ EACH LOCATION/INTERSECTION



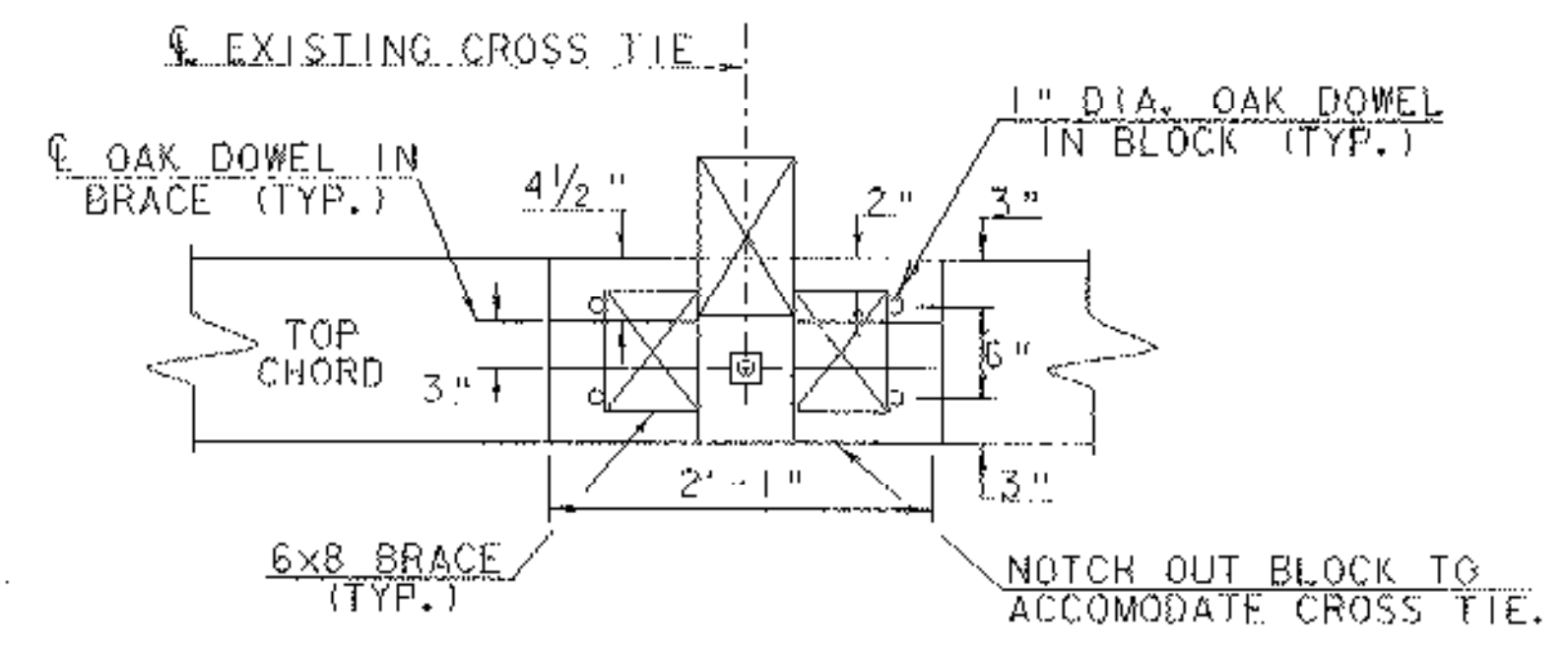
PROJECT:	PITTSFORD	ST HMND (I)
DESIGN FILE NAME:		
IPARM FILE NAME:		
DESIGNED BY: J. WEAVER	PLOT DATE: 28-APR-2005	
	DRAWN BY: J. WHITE	
	CHECKED BY: J. WEAVER	
CONSTRUCTION DETAIL SHEET 1	SHEET: 3 OF 5	



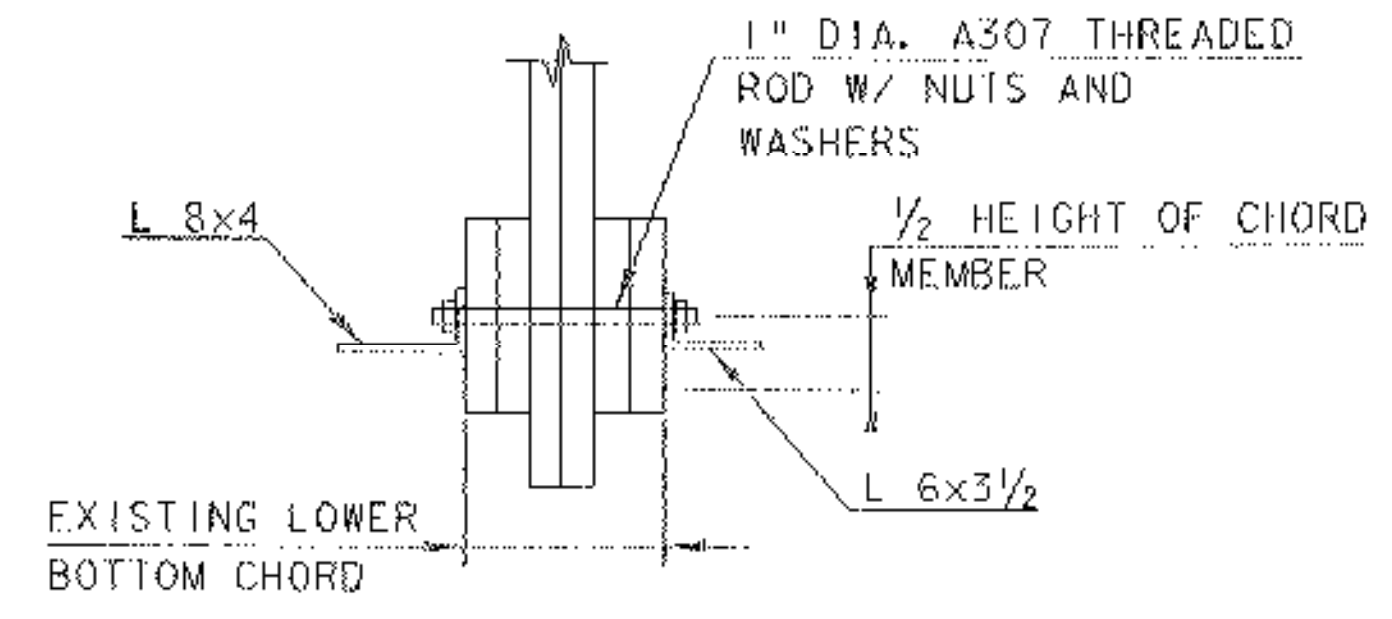
**HAMMOND BRIDGE  
(NEW TOP BRACING)**  
SCALE: 1/8" = 1'



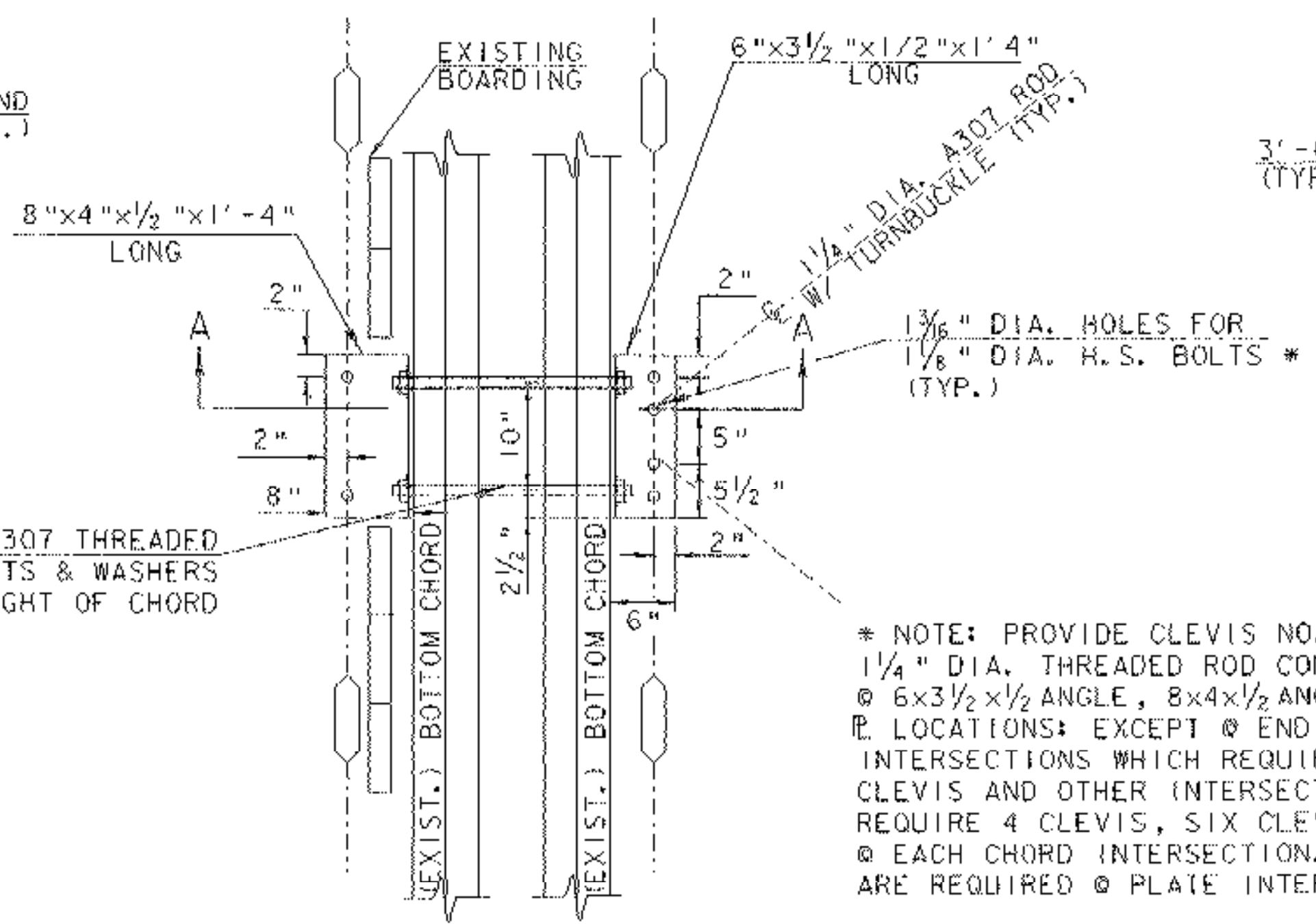
**PLAN @ TOP CHORD  
W/O CROSS TIE SHOWN**  
SCALE: 1" = 1'-0"



**ELEVATION @ TOP CHORD**  
SCALE: 1" = 1'-0"

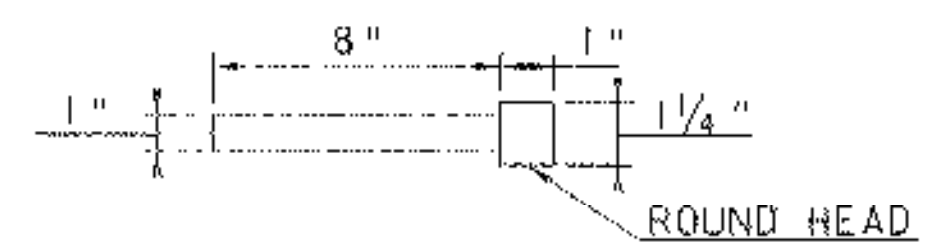


**SECTION AA**  
1" = 1'-0"

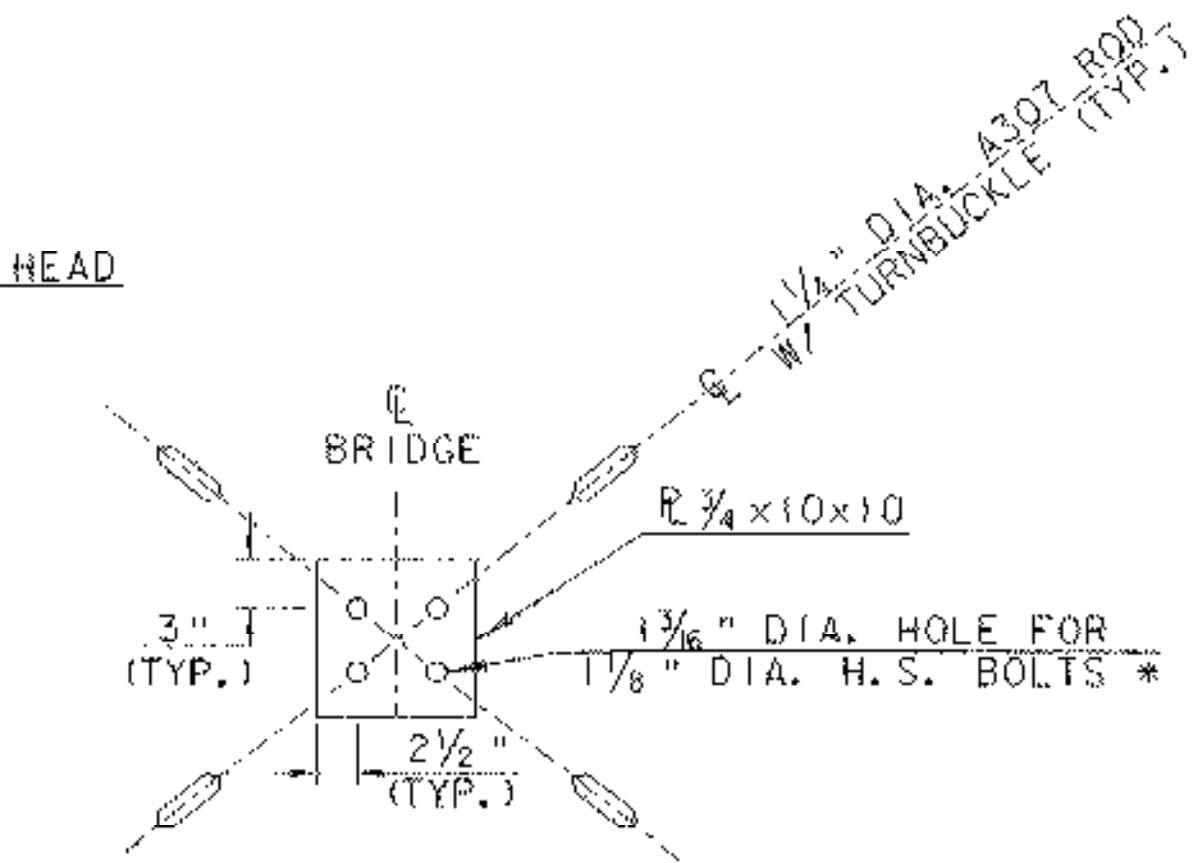


**PLAN @ LOWER BOTTOM CHORD** \*\*  
SCALE: 1" = 1'-0"

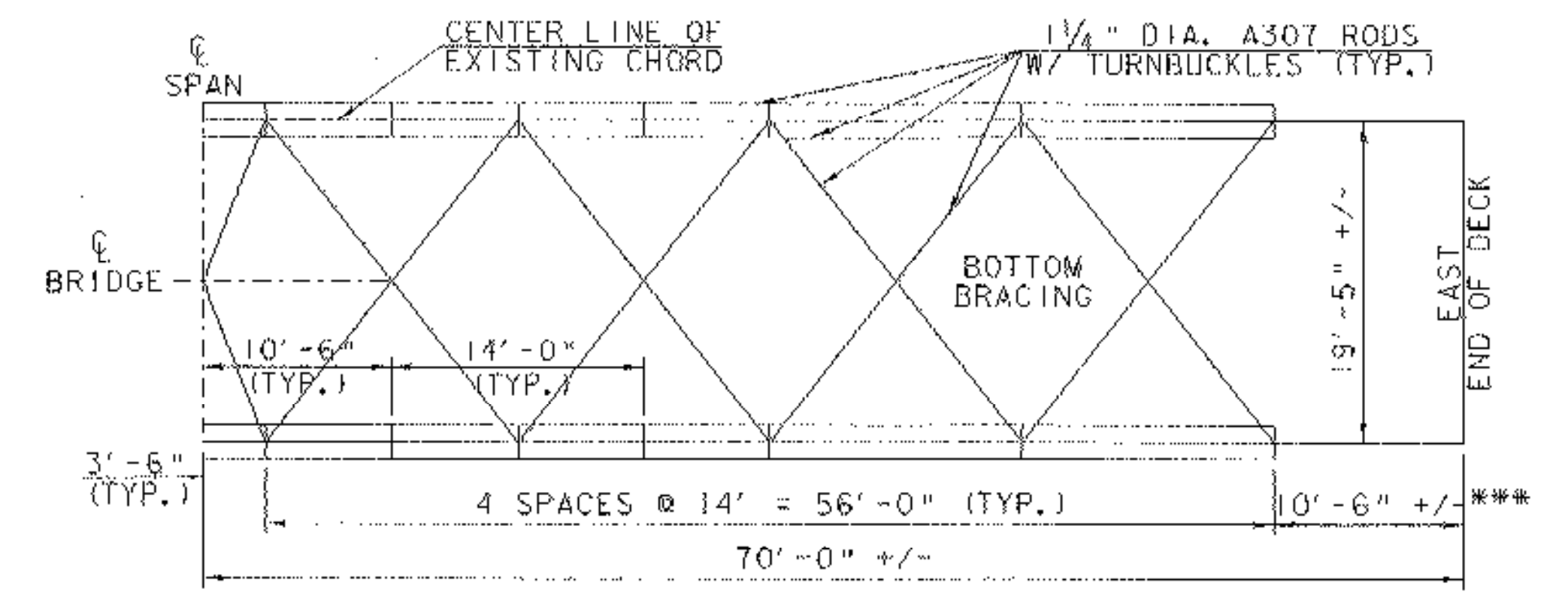
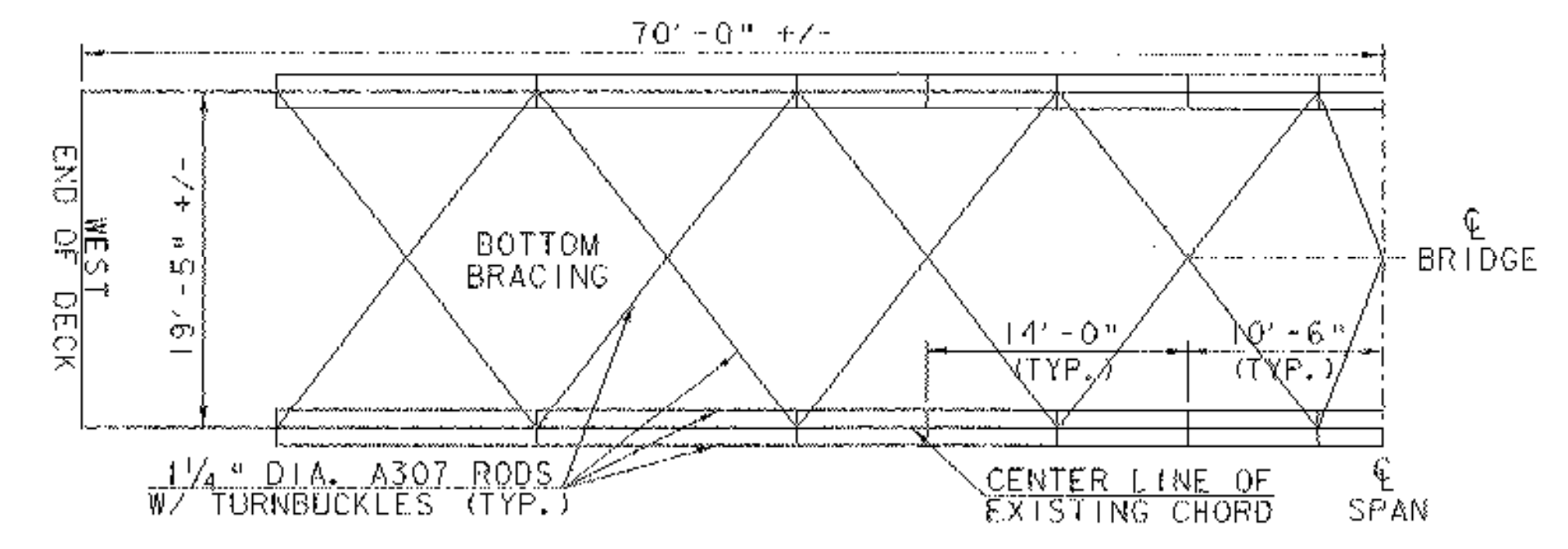
\*\* FLOOR BEAMS NOT SHOWN.



**DOWEL DETAIL**  
NTS

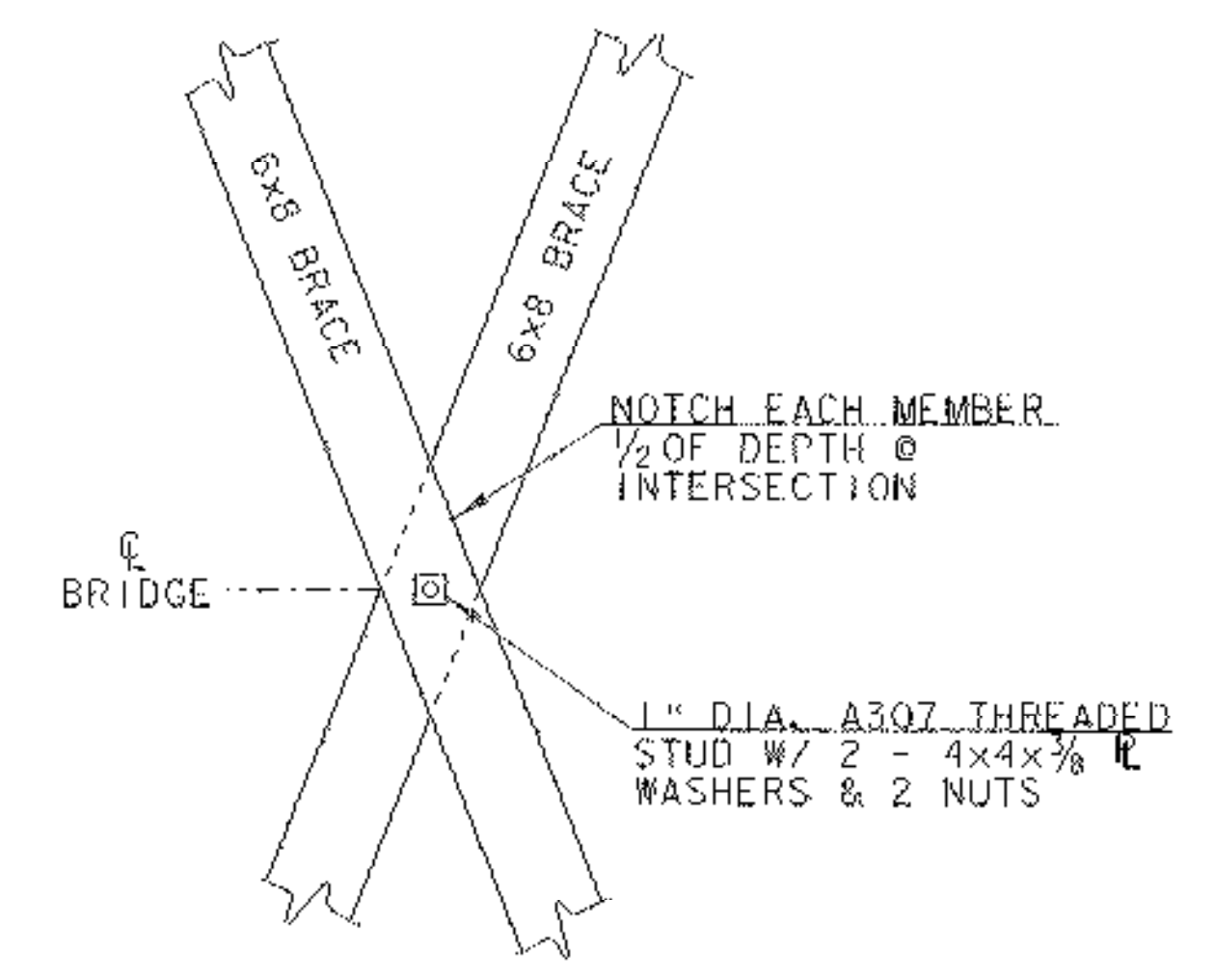


**BOTTOM X-BRACE  
PLAN @ C OF BRIDGE**  
SCALE: 1" = 1'-0"



**HAMMOND BRIDGE  
(NEW BOTTOM BRACING)**  
SCALE: 1/8" = 1'

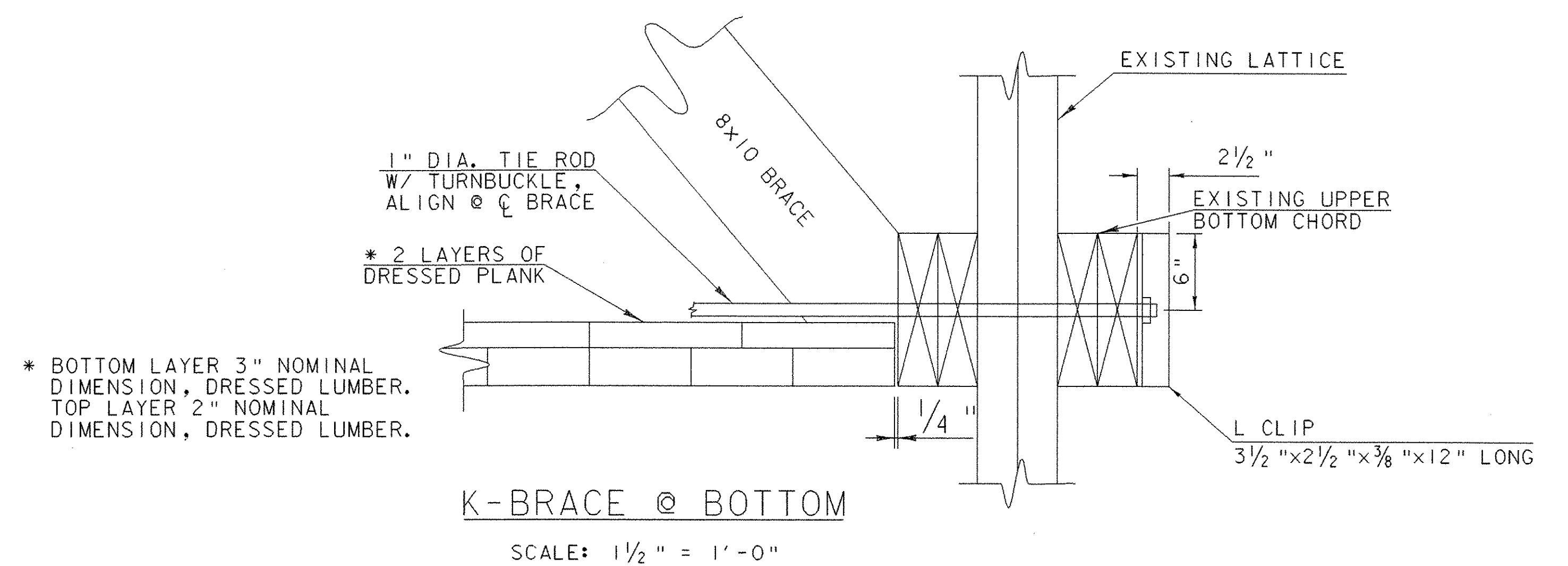
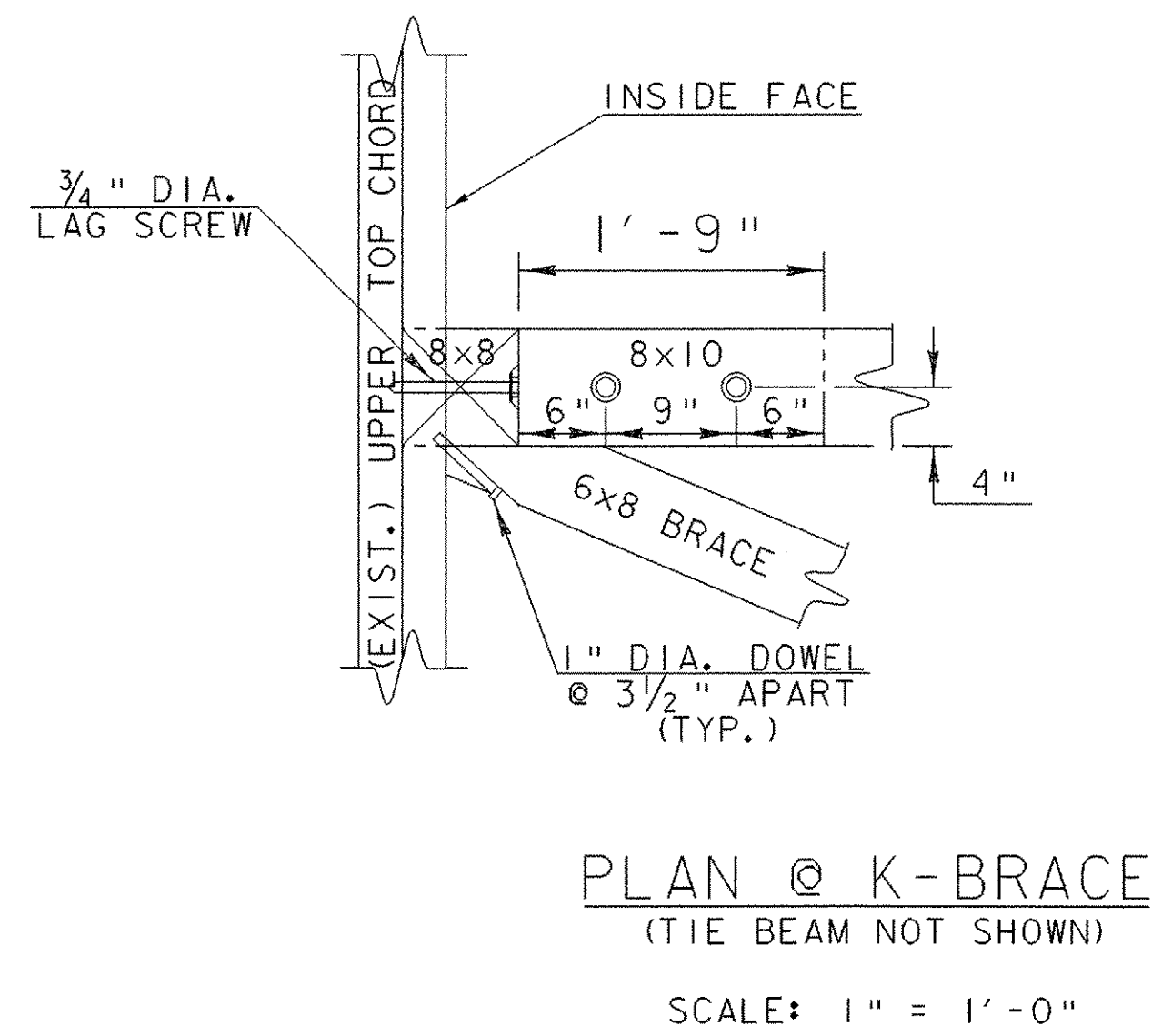
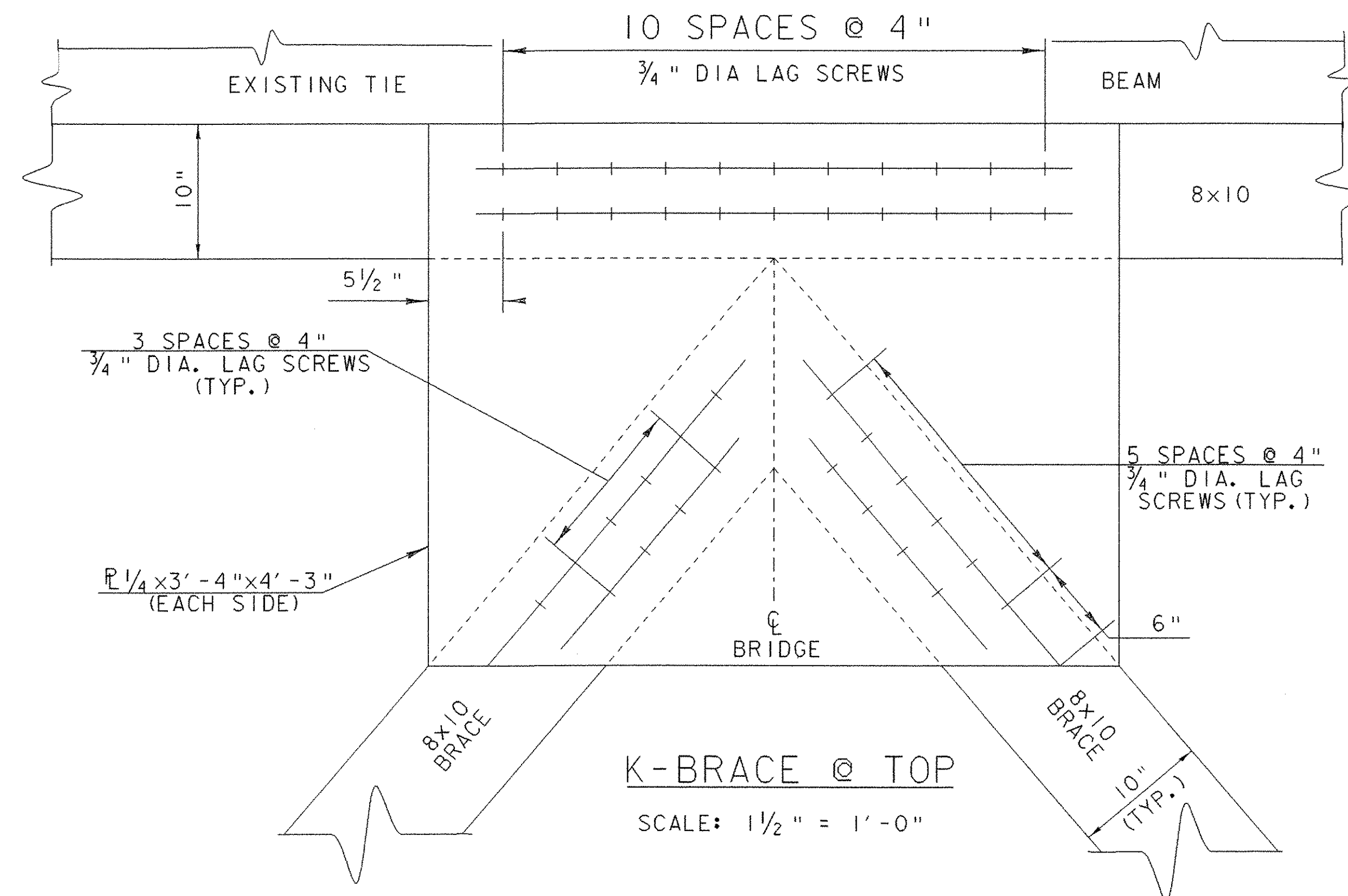
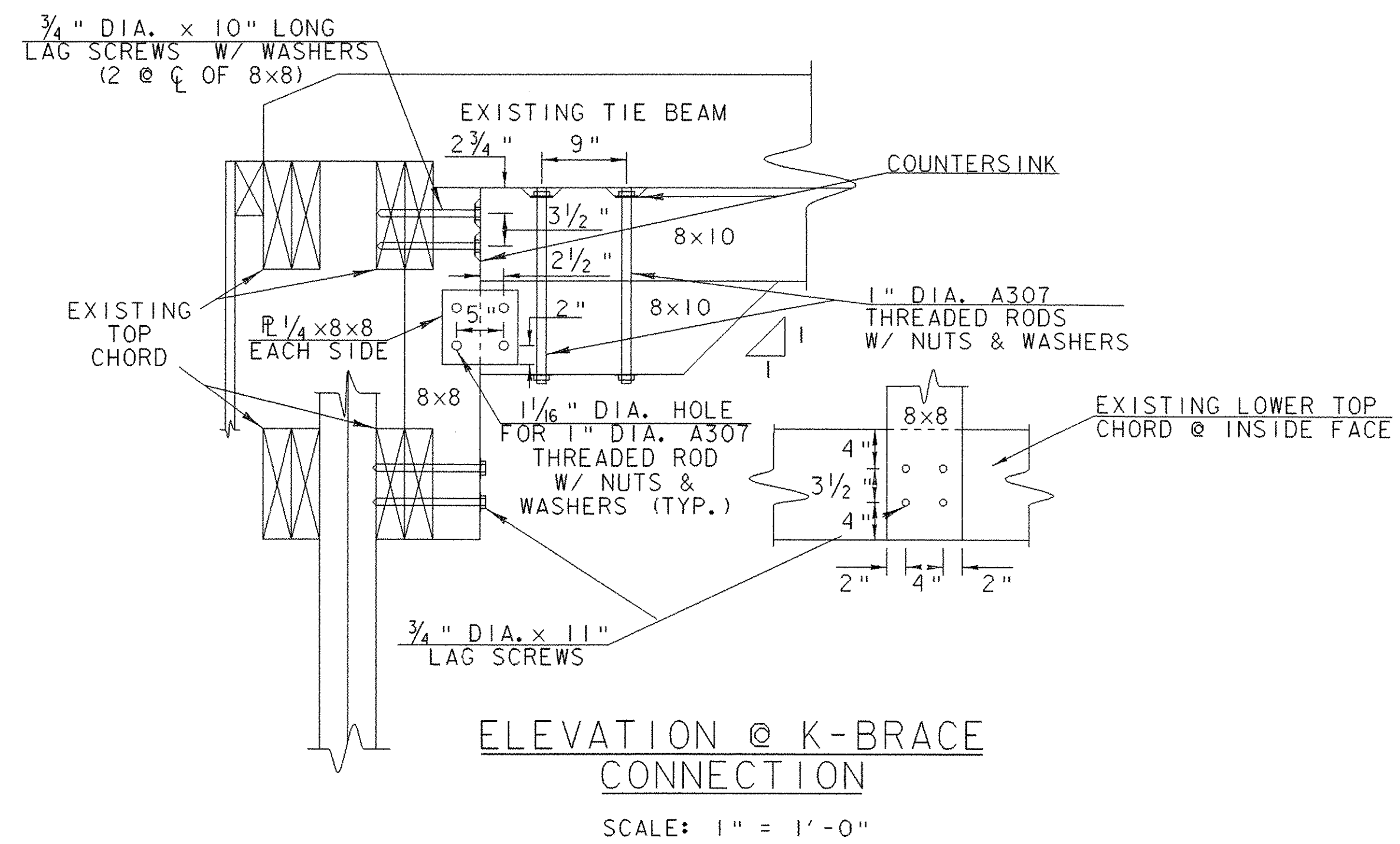
\*\*\* NOTE: LOCATE DIRECTLY BENEATH NEAREST FLOOR BEAM.



**PLAN @ 6x8 INTERSECTION**  
SCALE: 1" = 1'-0"

NOTE: ALL MEMBERS AND COMPONENTS SHOWN ARE NEW EXCEPT THOSE INDICATED OTHERWISE.

PROJECT:	PITTSFORD	ST HMND (1)
DESIGN FILE NAME:		
IPARM FILE NAME:		
DESIGNED BY: J. WEAVER	PLOT DATE: 28-APR-2005	
	DRAWN BY: J. WHITE	
	CHECKED BY: J. WEAVER	
CONSTRUCTION DETAIL SHEET 2	SHEET: 4 OF 5	



NOTE: ALL MEMBERS AND COMPONENTS SHOWN ARE NEW EXCEPT THOSE INDICATED OTHERWISE.

PROJECT:	PITTSFORD	ST HMND (1)
DESIGN FILE NAME:	IPARM FILE NAME:	PLOT DATE: 28-APR-2005
DESIGNED BY: J. WEAVER	CHECKED BY: J. WEAVER	DRAWN BY: J. WHITE
CONSTRUCTION DETAIL SHEET 3	SHEET: 5 OF 5	