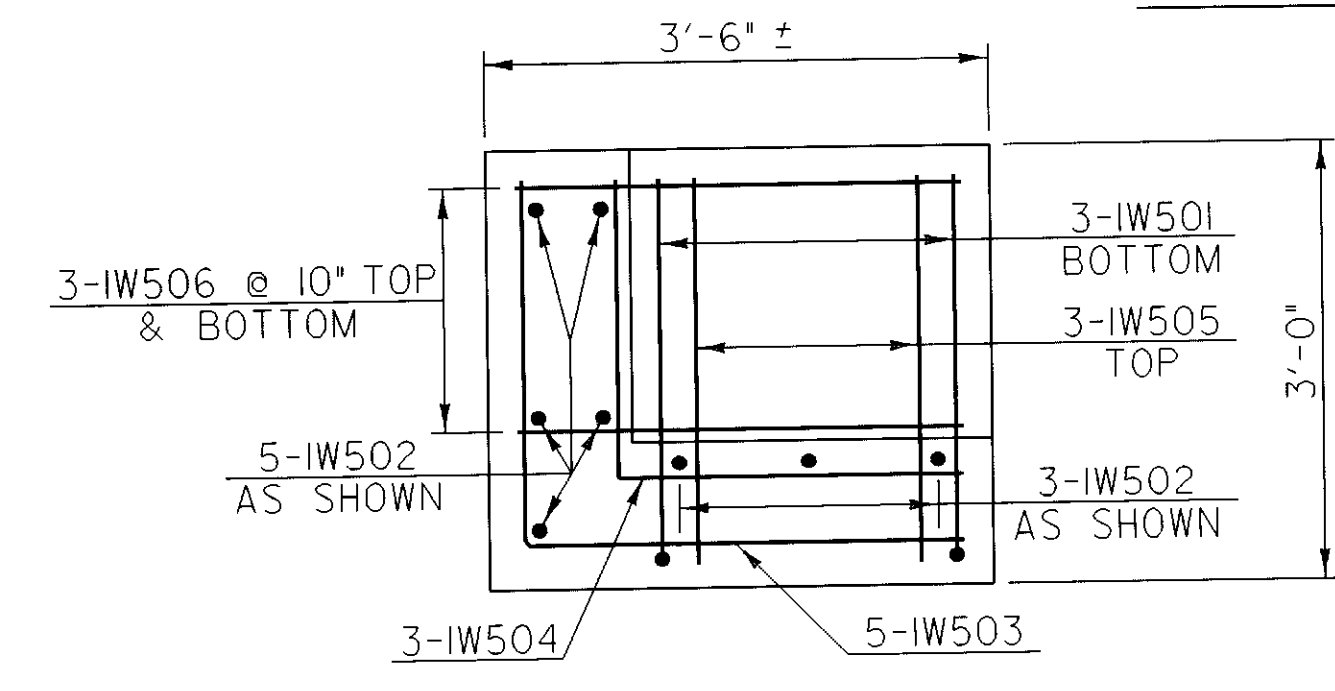
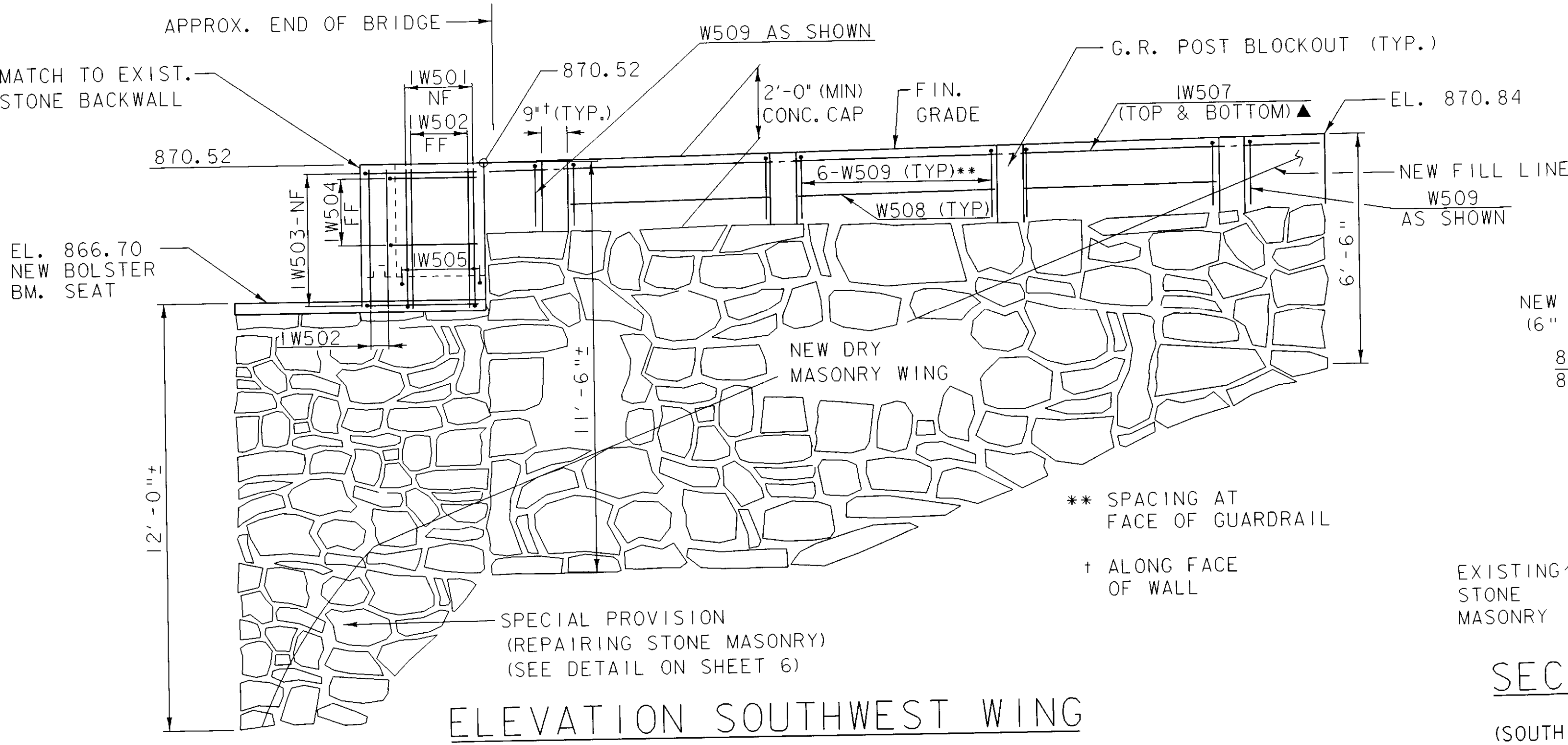


PLAN SOUTHWEST WING
SCALE: 3/8" = 1'-0"

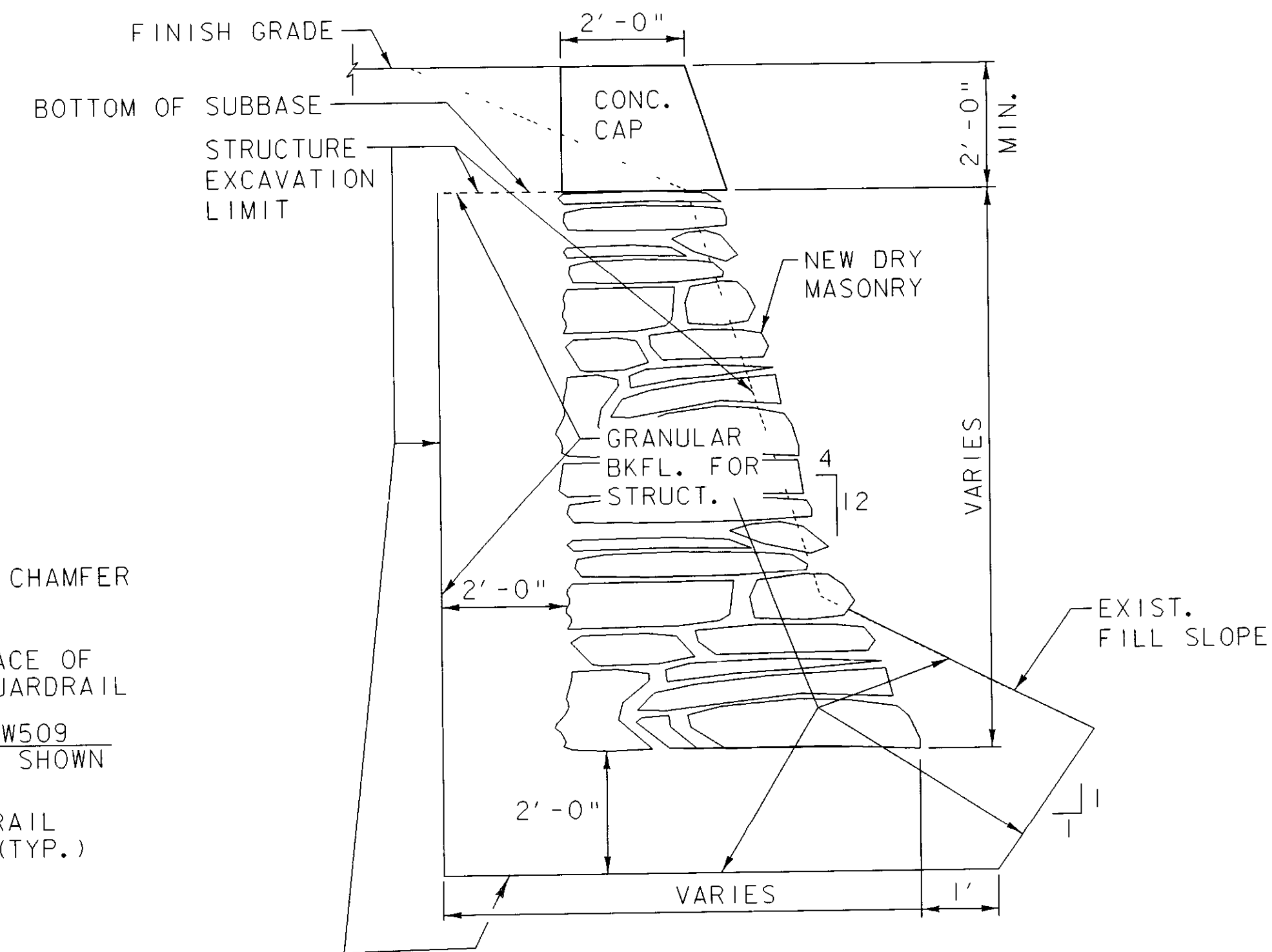


PLAN S.W. FOOTING
SCALE: 3/4" = 1'-0"
NOTE: SEE SECTION W-W FOR ADDITIONAL REBAR INFO.

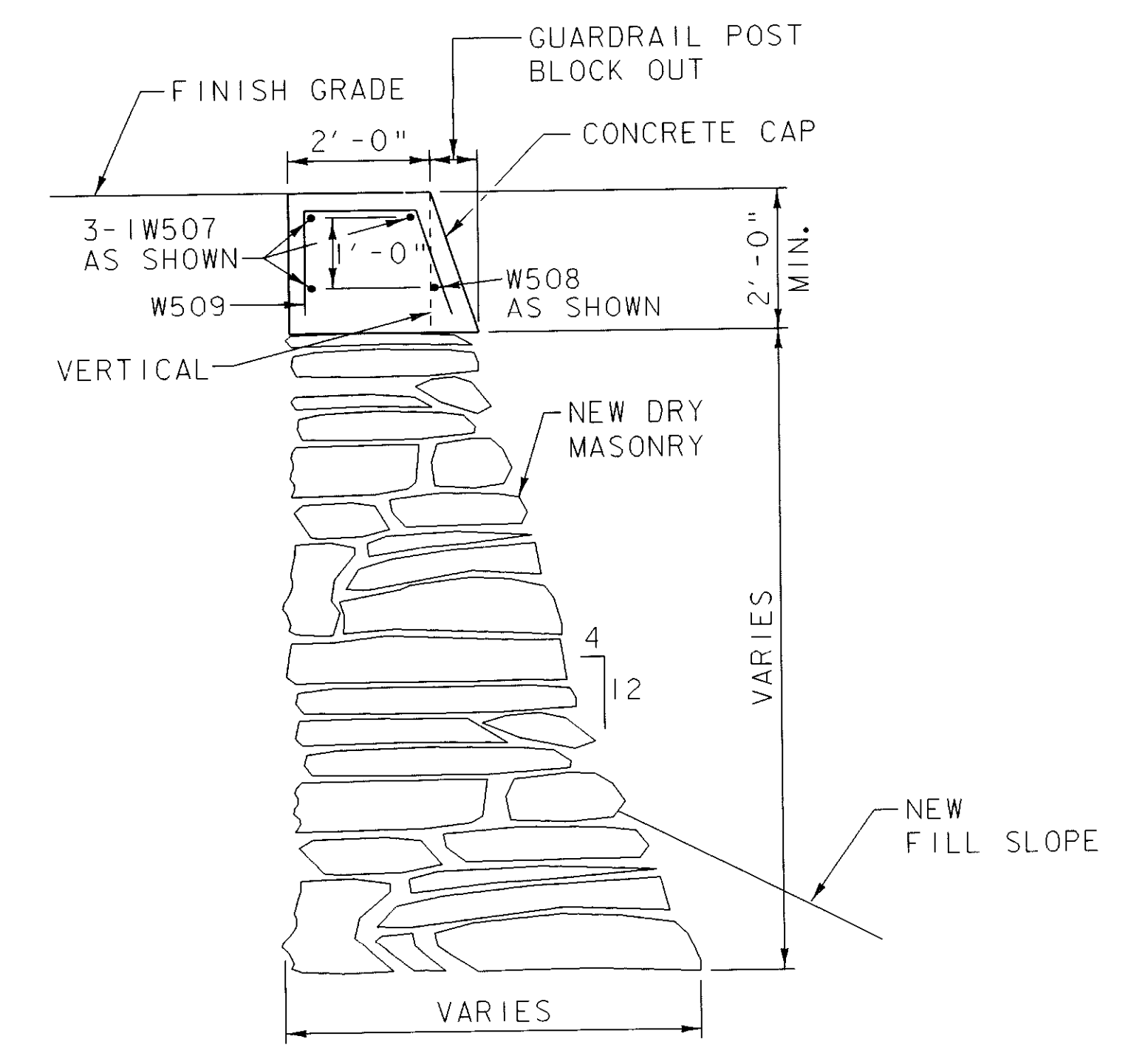
ALL BARS ARE #5s @ 12" UNLESS OTHERWISE NOTED
▲ DENOTES BARS TO BE CUT IN FIELD
MINIMUM CLEARANCE: 3" FROM ALL SURFACES, EXCEPT WHERE NOTED



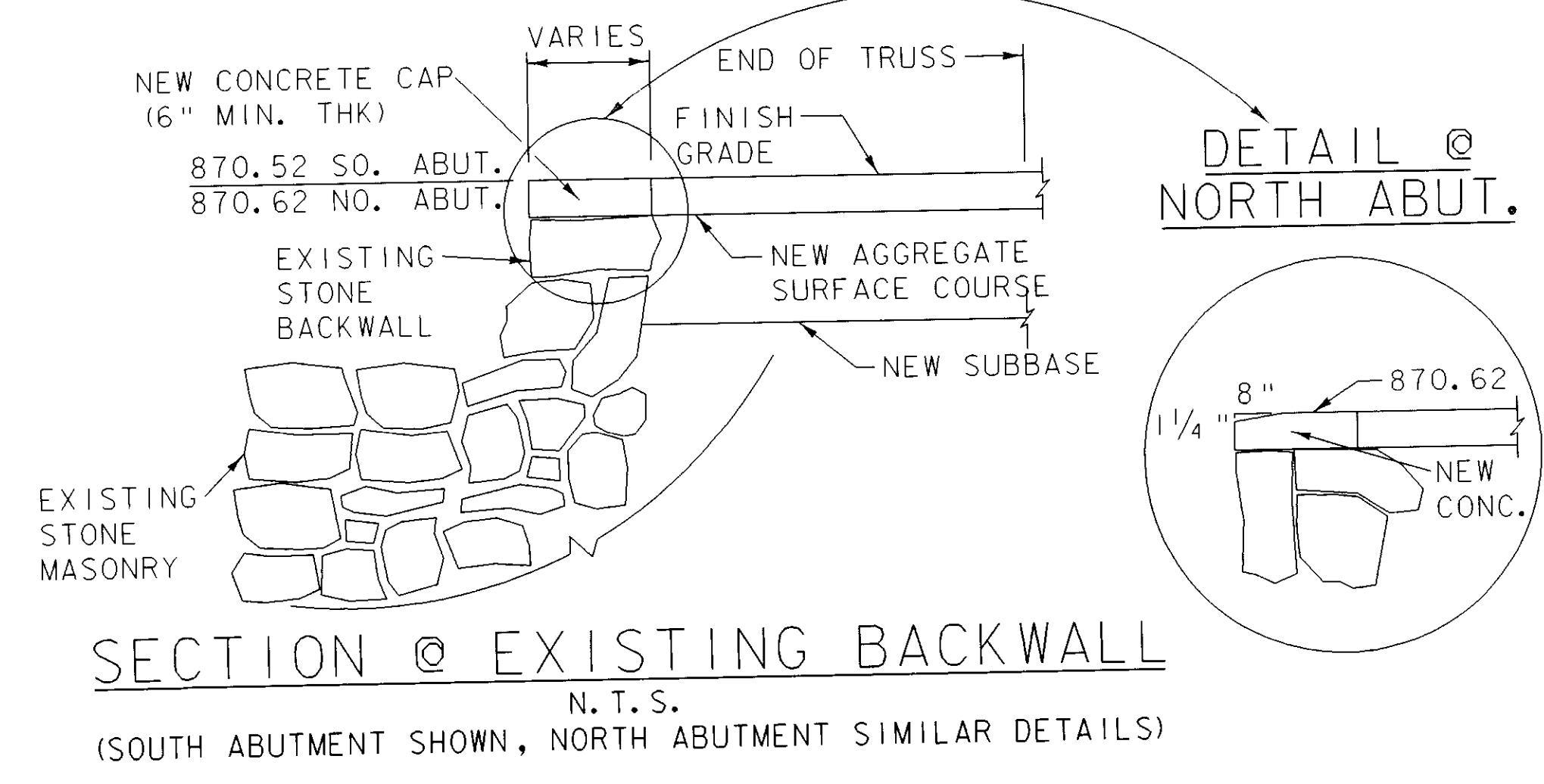
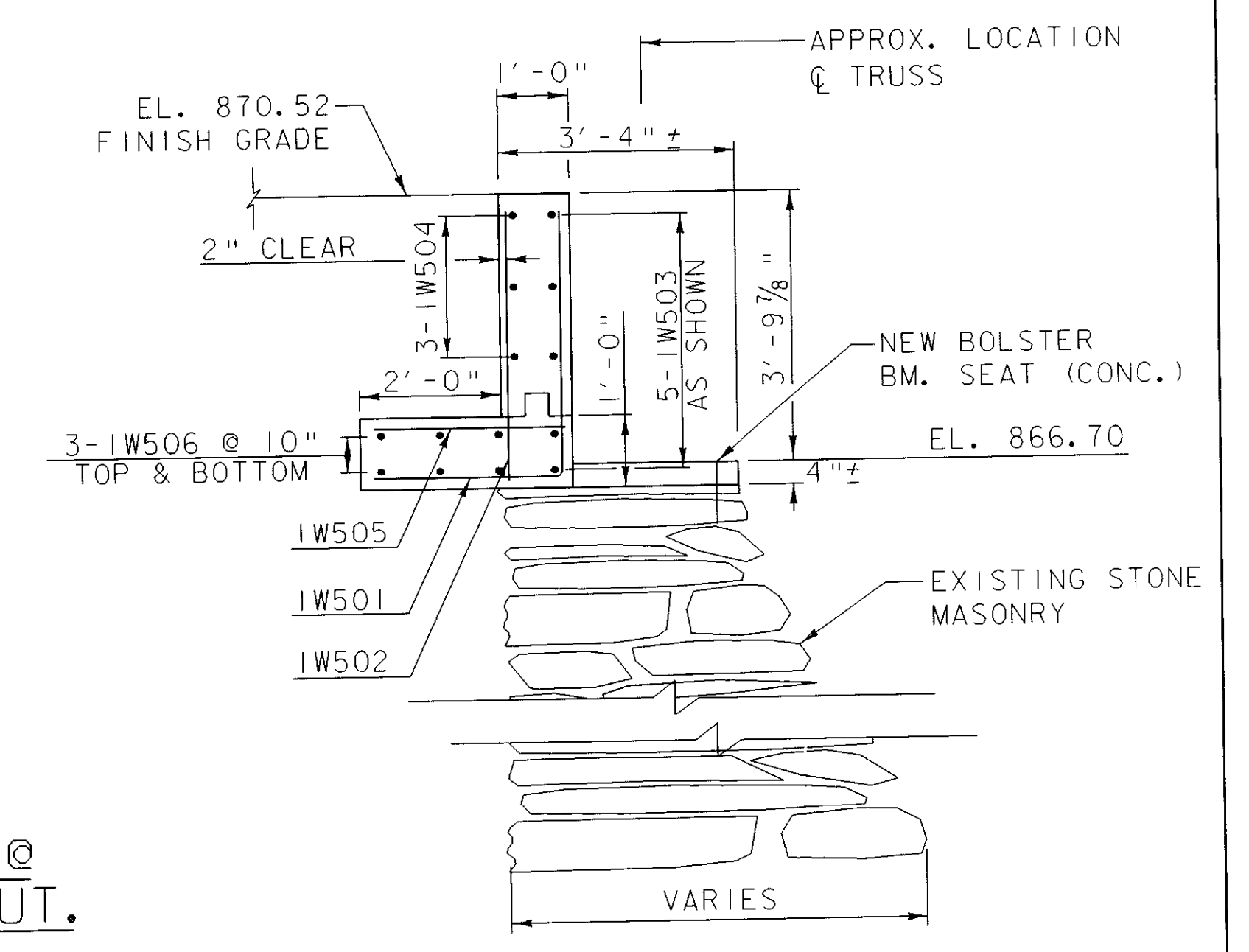
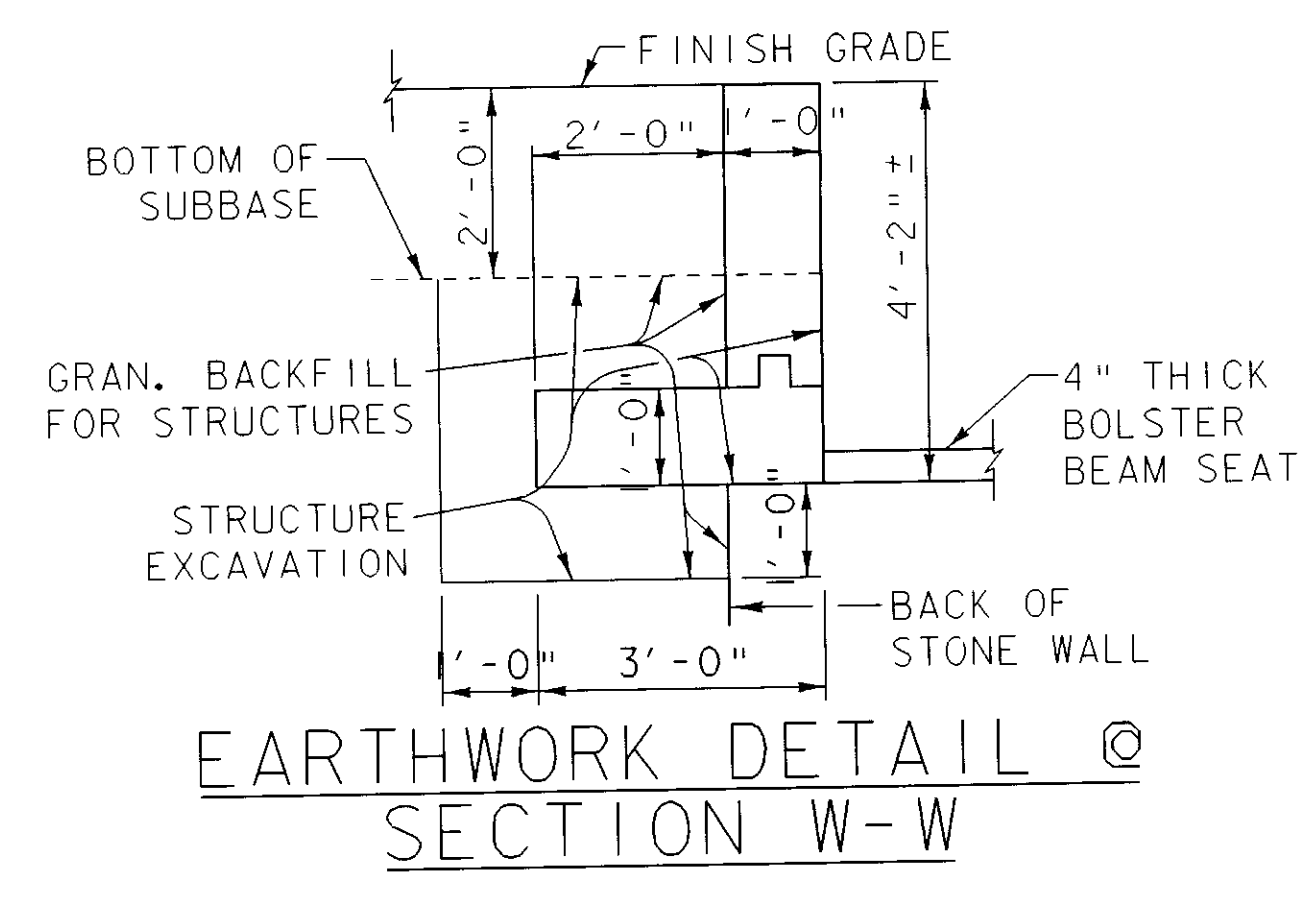
ELEVATION SOUTHWEST WING
SCALE: 3/8" = 1'-0"



TYPICAL EARTHWORK SECTION NEW STONE WING S.W.
SCALE: 1/2" = 1'-0"



TYPICAL SECTION NEW STONE WING S.W.
SCALE: 1/2" = 1'-0"



SECTION @ EXISTING BACKWALL
N. T. S.
(SOUTH ABUTMENT SHOWN, NORTH ABUTMENT SIMILAR DETAILS)

PROJECT NAME: MONTGOMERY	PLOT DATE: 21-MAY-2008
PROJECT NUMBER: BHO 1448 (37)	DRAWN BY: J. TREI
FILE NAME: s04j148d1.dgn	CHECKED BY: J. WEAVER
PROJECT LEADER: J. WEAVER	CONSTRUCTION DETAIL SHEET 6
DESIGNED BY: J. WEAVER	SHEET 21 OF 33