

PI COORDINATES

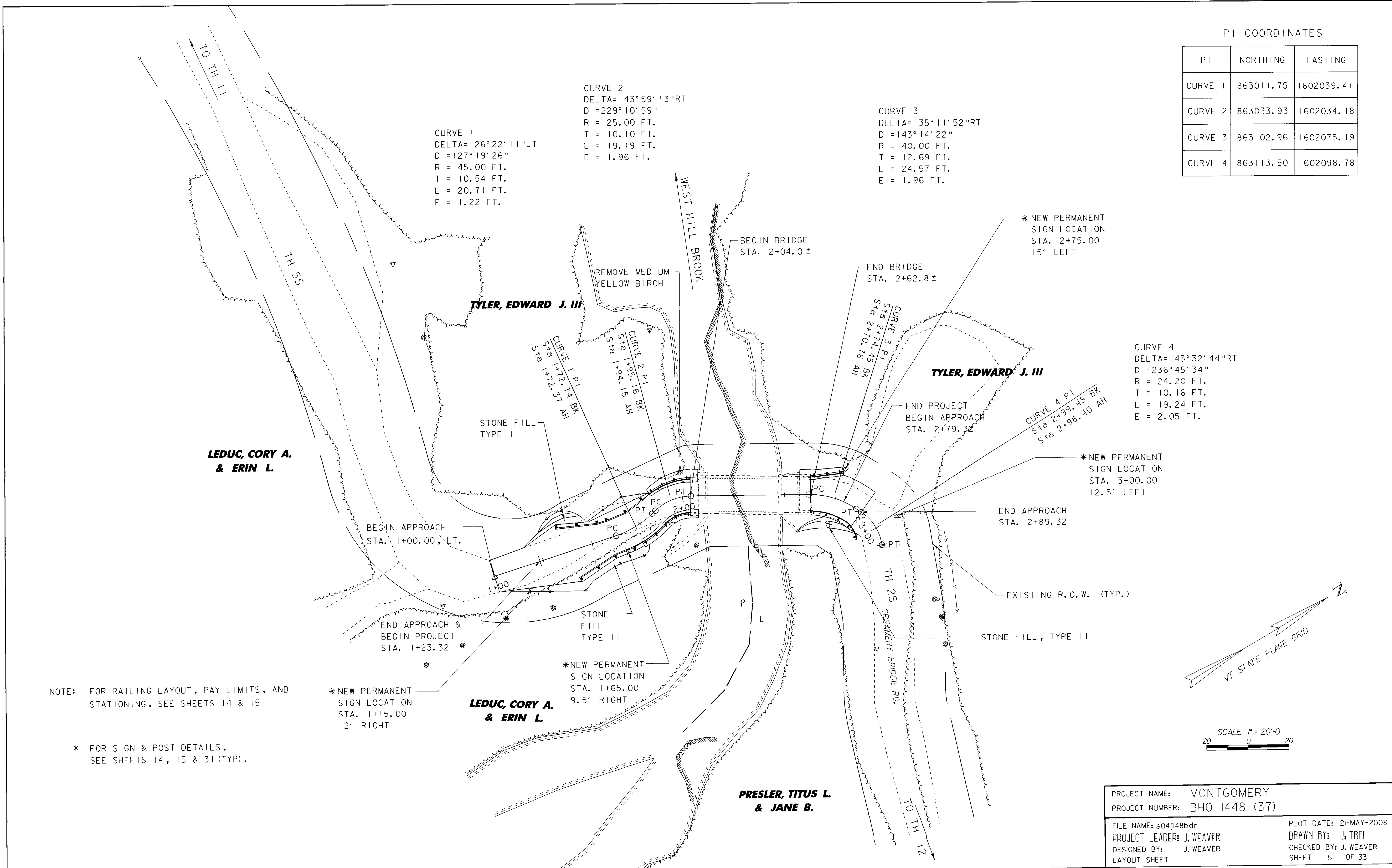
PI	NORTHING	EASTING
CURVE 1	863011.75	1602039.41
CURVE 2	863033.93	1602034.18
CURVE 3	863102.96	1602075.19
CURVE 4	863113.50	1602098.78

CURVE 1  
 DELTA= 26°22'11"LT  
 D = 127°19'26"  
 R = 45.00 FT.  
 T = 10.54 FT.  
 L = 20.71 FT.  
 E = 1.22 FT.

CURVE 2  
 DELTA= 43°59'13"RT  
 D = 229°10'59"  
 R = 25.00 FT.  
 T = 10.10 FT.  
 L = 19.19 FT.  
 E = 1.96 FT.

CURVE 3  
 DELTA= 35°11'52"RT  
 D = 143°14'22"  
 R = 40.00 FT.  
 T = 12.69 FT.  
 L = 24.57 FT.  
 E = 1.96 FT.

CURVE 4  
 DELTA= 45°32'44"RT  
 D = 236°45'34"  
 R = 24.20 FT.  
 T = 10.16 FT.  
 L = 19.24 FT.  
 E = 2.05 FT.



NOTE: FOR RAILING LAYOUT, PAY LIMITS, AND STATIONING, SEE SHEETS 14 & 15

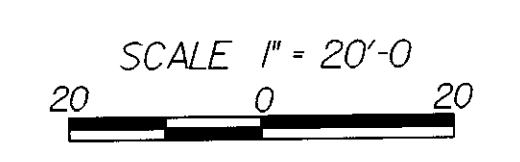
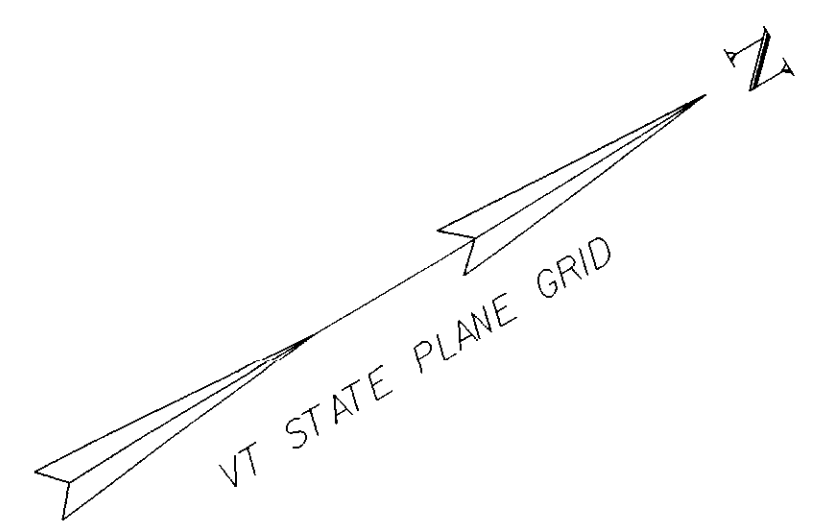
\* FOR SIGN & POST DETAILS, SEE SHEETS 14, 15 & 31 (TYP).

\*NEW PERMANENT SIGN LOCATION STA. 1+15.00 12' RIGHT

\*NEW PERMANENT SIGN LOCATION STA. 1+65.00 9.5' RIGHT

\*NEW PERMANENT SIGN LOCATION STA. 2+75.00 15' LEFT

\*NEW PERMANENT SIGN LOCATION STA. 3+00.00 12.5' LEFT



PROJECT NAME: MONTGOMERY	PLOT DATE: 21-MAY-2008
PROJECT NUMBER: BHO 1448 (37)	DRAWN BY: J. TREI
FILE NAME: s04j148bdr	CHECKED BY: J. WEAVER
PROJECT LEADER: J. WEAVER	SHEET 5 OF 33
DESIGNED BY: J. WEAVER	
LAYOUT SHEET	