

FRAMING PLAN

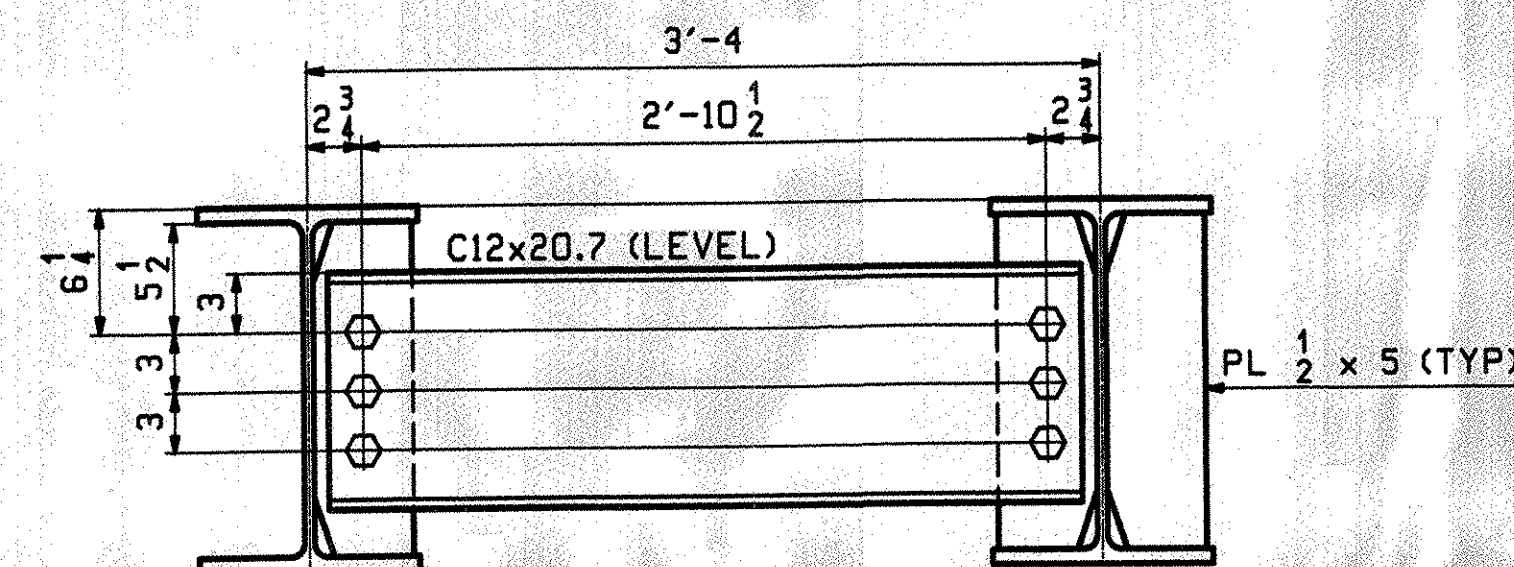
ERECTOR NOTE:

1. TRUSS HOLD-DOWNS (REFERENCE DESIGN SHEET 30 of 39) CONSIST OF SHIPPING MARKS 2M2 (HOLD DOWN ROD), 2M3 (ANCHOR BOLTS) & 2M4 (CONNECTION ANGLE).
2. TIE BEAM HOLD DOWNS (REF. UPPER LATERAL KNEE BRACE DETAIL ON DESIGN SHEET 31 of 39) CONSIST OF SHIPPING MARKS 2M5 (CONNECTION ANGLE) AND 2M6 (HOLD DOWN ROD).

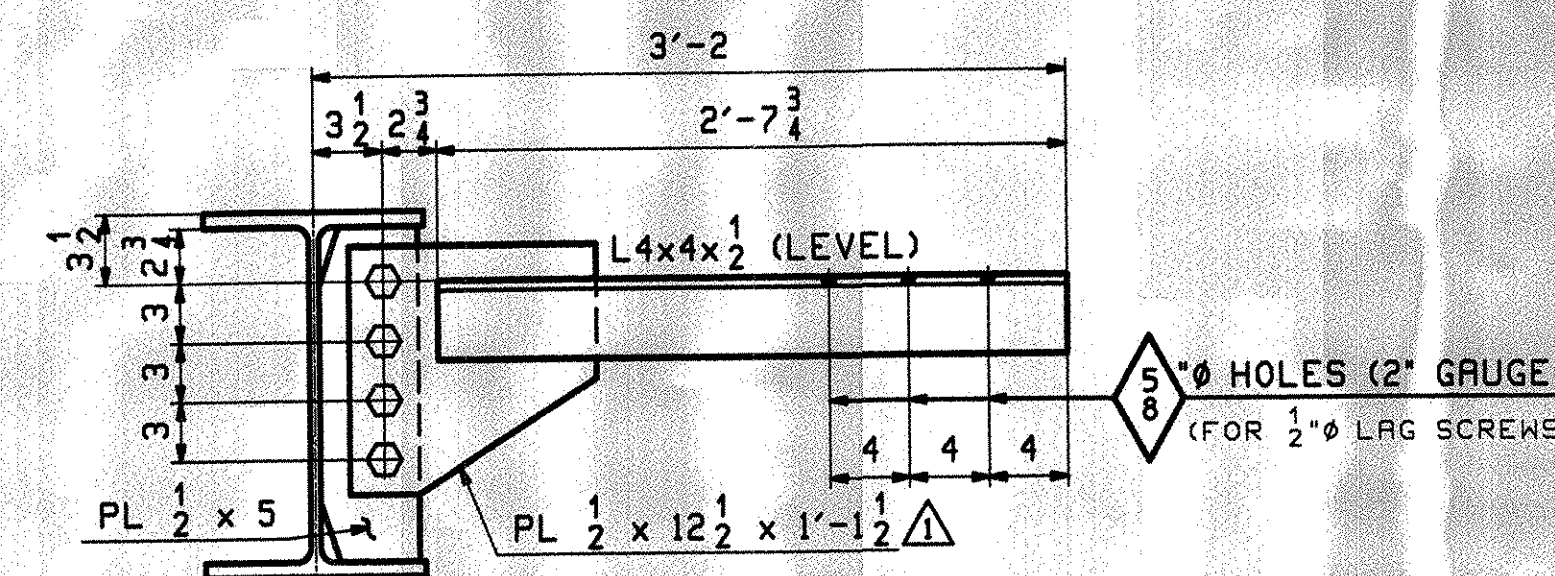
FIELD BOLT LIST										A325 Type 1 BOLTS (GALV)		WASHER CODES	
LINE	NO REQ'D	BOLT DIAM.	BOLT LEN.	BOLTS / CONN.	# OF CONN.	GRIP	THICKNESS OF PCS. CONNECTED	WASH CODE	PIECES CONNECTED AND REMARKS				
1													
2	54	7/8	2 1/4	3	18	1 1/2	5/16	1/2	1	WEB TO CONNECTION PLATE			
3													
4													
5	8	7/8	2 1/2	4	2	1 1/2	1/2	1/2	2	GUSSET PLATE TO CONNECTION PLATE			

1: 1 Hard Flat Washer
2: 2 Hard Flat Washers

FIELD BOLT SUMMARY							EXACT COUNT - NONE EXTRA		REMARKS	
LINE	NO. OF BOLTS	BOLT DIAM.	BOLT TYPE	BOLT LEN.	ACTUAL COUNT					
1	54	7/8	A325 Type 1	2 1/4	54					GALVANIZED
2	8	7/8	A325 Type 1	2 1/2	8					GALVANIZED
3										
4	70 Hard Flat Washers for 7/8" BOLT									GALVANIZED (F436)
5										
6										
7										



DIAPHRAGMS



TRUSS RETAINER BRACKET
(NORTH BRACKET AS SHOWN)
(SOUTH SIMILAR)

SHOP DRAWING REVIEW

REVIEWED AS REQUIRED BY THE CONSTRUCTION CONTRACT DOCUMENTS AND APPROVED, BUT ONLY FOR CONFORMANCE TO THE DESIGN CONCEPT OF THE WORK, AND SUBJECT TO FURTHER LIMITATIONS AND REQUIREMENTS CONTAINED IN THE CONSTRUCTION CONTRACT DOCUMENTS.

REJECTED REVISE AND RESUBMIT FURNISH AS CORRECTED

CORRECTIONS OR COMMENTS MADE ON THE SHOP DRAWINGS DURING THIS REVIEW DO NOT RELIEVE CONTRACTOR FROM COMPLIANCE WITH REQUIREMENTS OF THE DRAWINGS AND SPECIFICATIONS. THIS CHECK IS ONLY FOR REVIEW OF GENERAL CONFORMING WITH THE DESIGN CONCEPT OF THE PROJECT AND GENERAL COMPLIANCE WITH THE INFORMATION GIVEN IN THE CONTRACT DOCUMENTS. THE CONTRACTOR IS RESPONSIBLE FOR CONFIRMING AND CORRELATING ALL QUANTITIES AND DIMENSIONS, SELECTING FABRICATION PROCESSES AND TECHNIQUES OF CONSTRUCTION, COORDINATING HIS WORK WITH THAT OF ALL OTHER TRADES, AND PERFORMING HIS WORK IN A SAFE AND SATISFACTORY MANNER.

VHB Vanessa Hengen Brustlin, Inc.
Engineers, Planners, and Scientists
Six Bedford Farms, White Rd.
Bedford, NH 05110 603 844 0888

Job Number: 51752
Reviewed By: S. HODGSON
Date: 12-12-07

Approved: 10/23/07

REV.	DATE	APPROVAL COMMENTS	JTB	DBH	REMARKS	DWN	CHK	APVL	SHOP
1	11/06/07								
2									
3									
4									
5									
6									
7									

DESCRIPTION: FRAMING PLAN, FIELD BOLTS & LAYOUTS

CASCO BAY STEEL STRUCTURES, INC.
75 SPRING HILL ROAD SACO, MAINE 04072
PHONE (207) 282-7360 FAX. (207) 282-1179

STRUCTURE: REHAB. OF BRALEY COVERED BRIDGE
TH 64 (CLASS 111 - LOCAL ROAD)
BRIDGE NO. 38

LOCATION: TOWN OF RANDOLPH, VERMONT

PROJ NO. BHO 1444(44)

CUSTOMER: VERMONT R.O.T.

DRAWN: JTB DATE: 09/16
CHKD: DBH DATE: 10/04

JOB NO. 340 DWG NO. E1

REV. 1