

GPS CONTROL POINTS

HVCTRL # 1

STANDARD DISK STAMPED
East Randolph
N = 521893.79
E = 1626547.81
ELEV. = 657.60

* To reach from the intersection of VT route 14 and VT route 66 in East Randolph go south along route 14 for 0.9 mi to the intersection of a gravel drive left, at the south edge of a cemetery, and the site of the mark on the left, south of the gravel drive. The mark is set 1 in below the ground surface in the top of a 12 in diameter concrete monument poured 4 ft deep. It is 21.7 ft east of and about 1.6 ft higher than the centerline of route 14, 16.7 ft south of the centerline of the gravel drive, 43 ft east of pole # 30T/7/122/61/30, 48.6 ft southwest of the southwest corner of the gravestone of Blodgett, and 1 ft west of a fiberglass witness post.

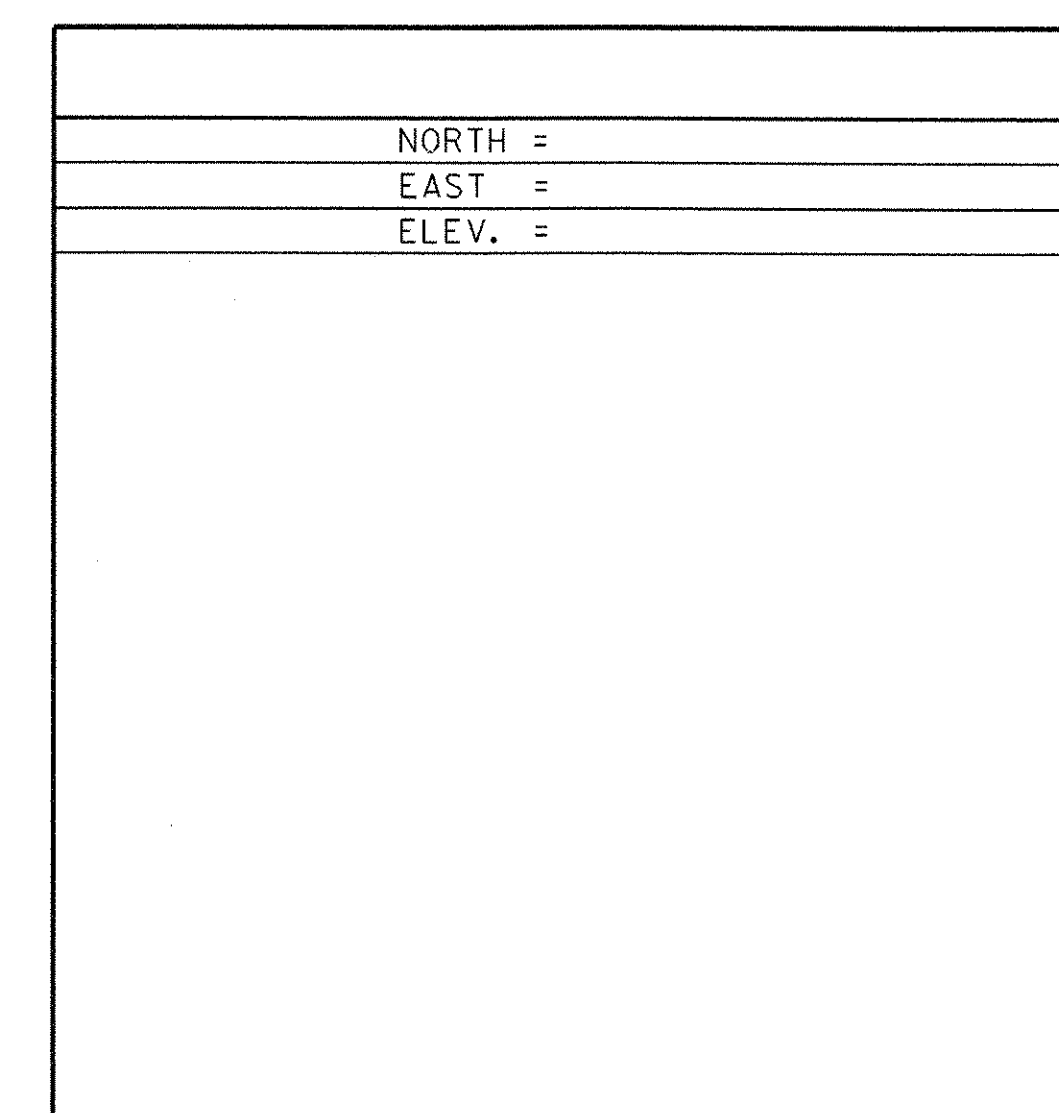
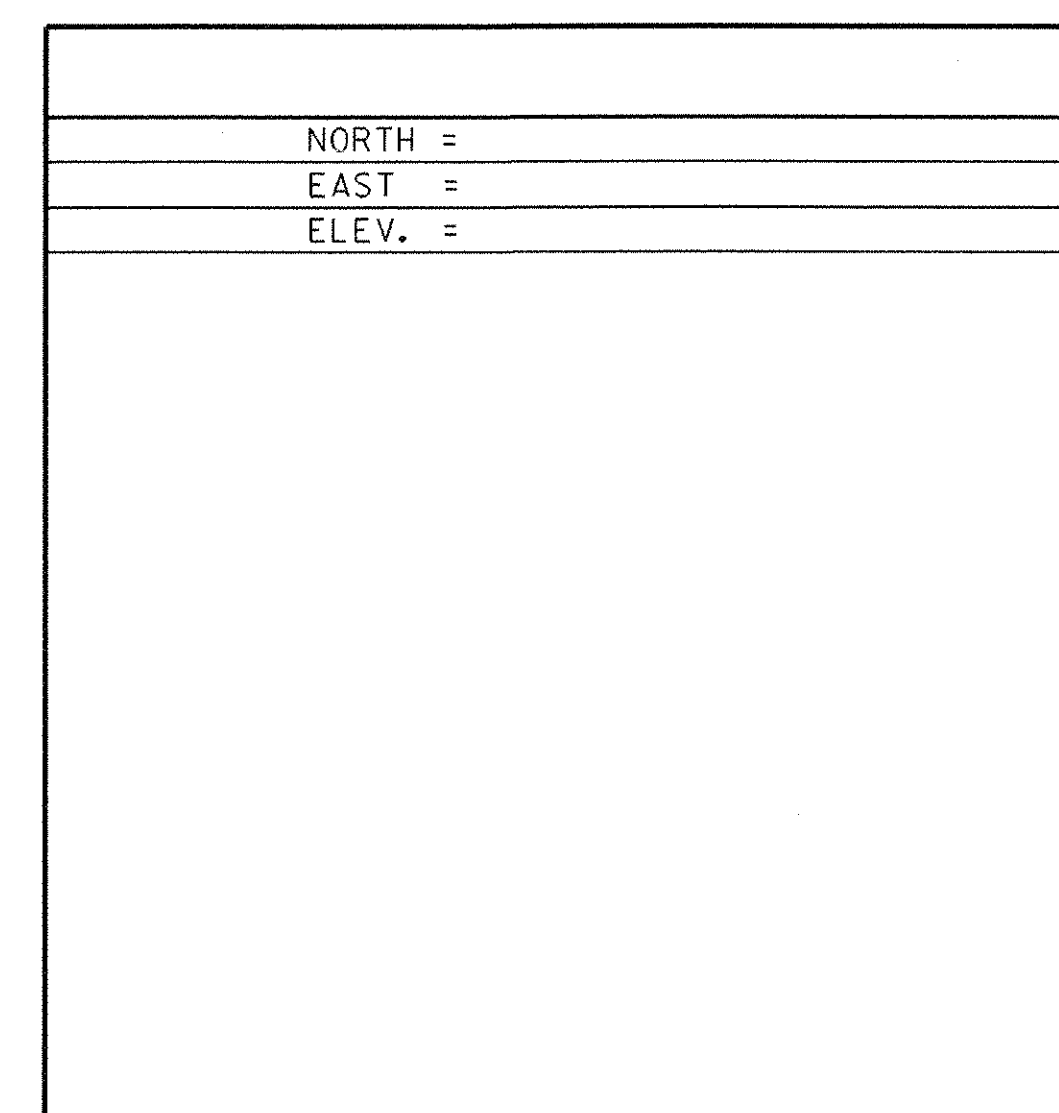
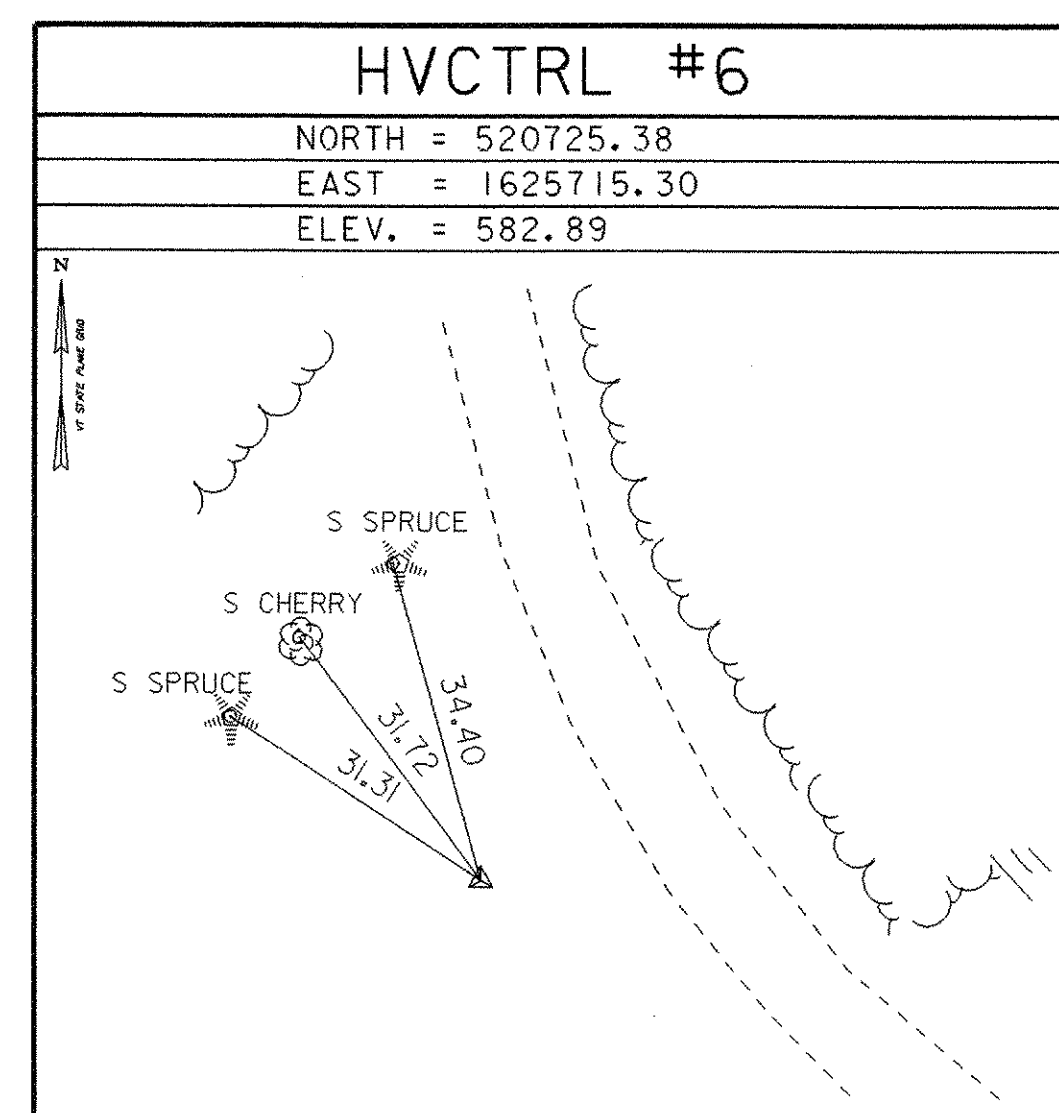
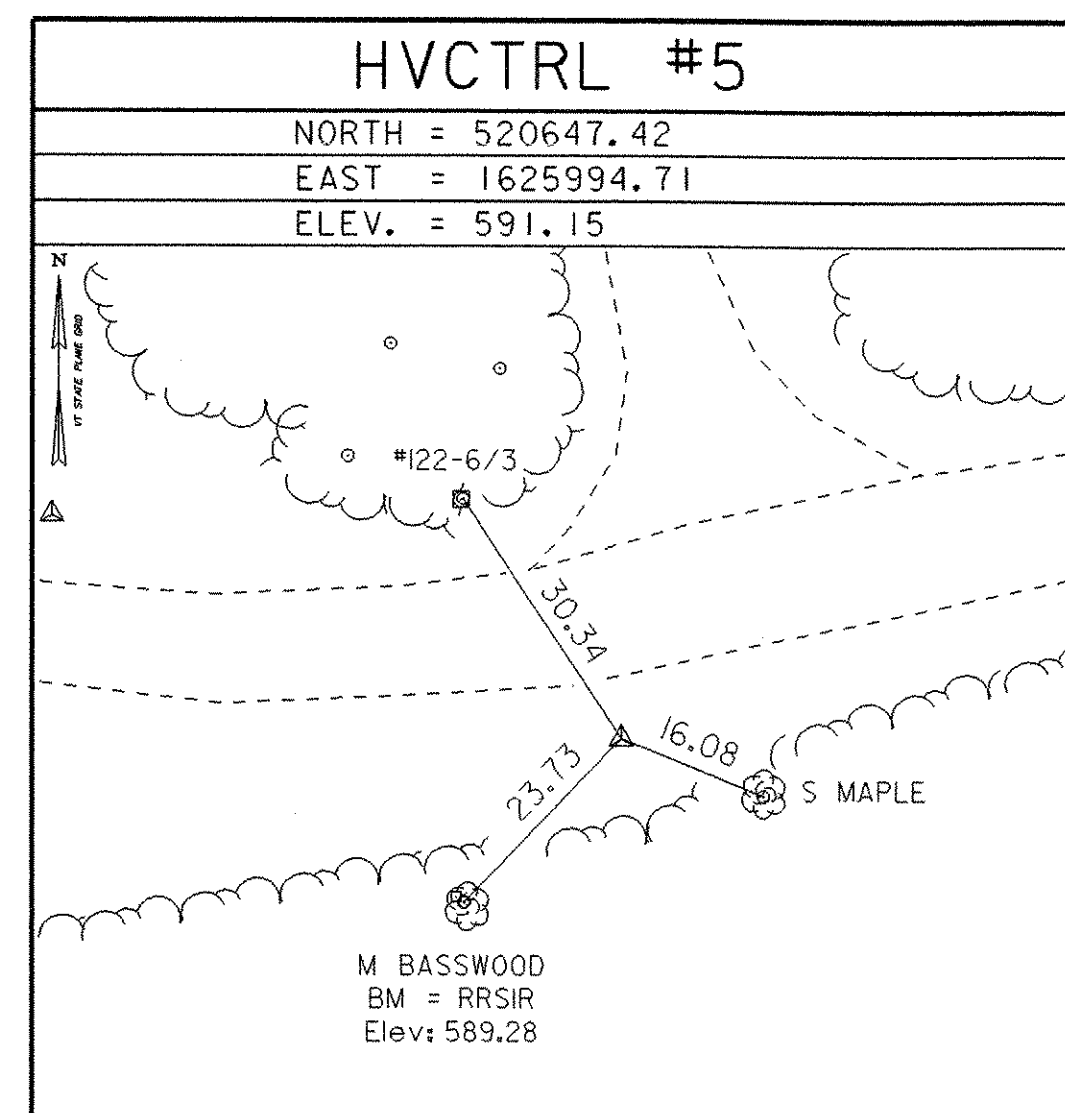
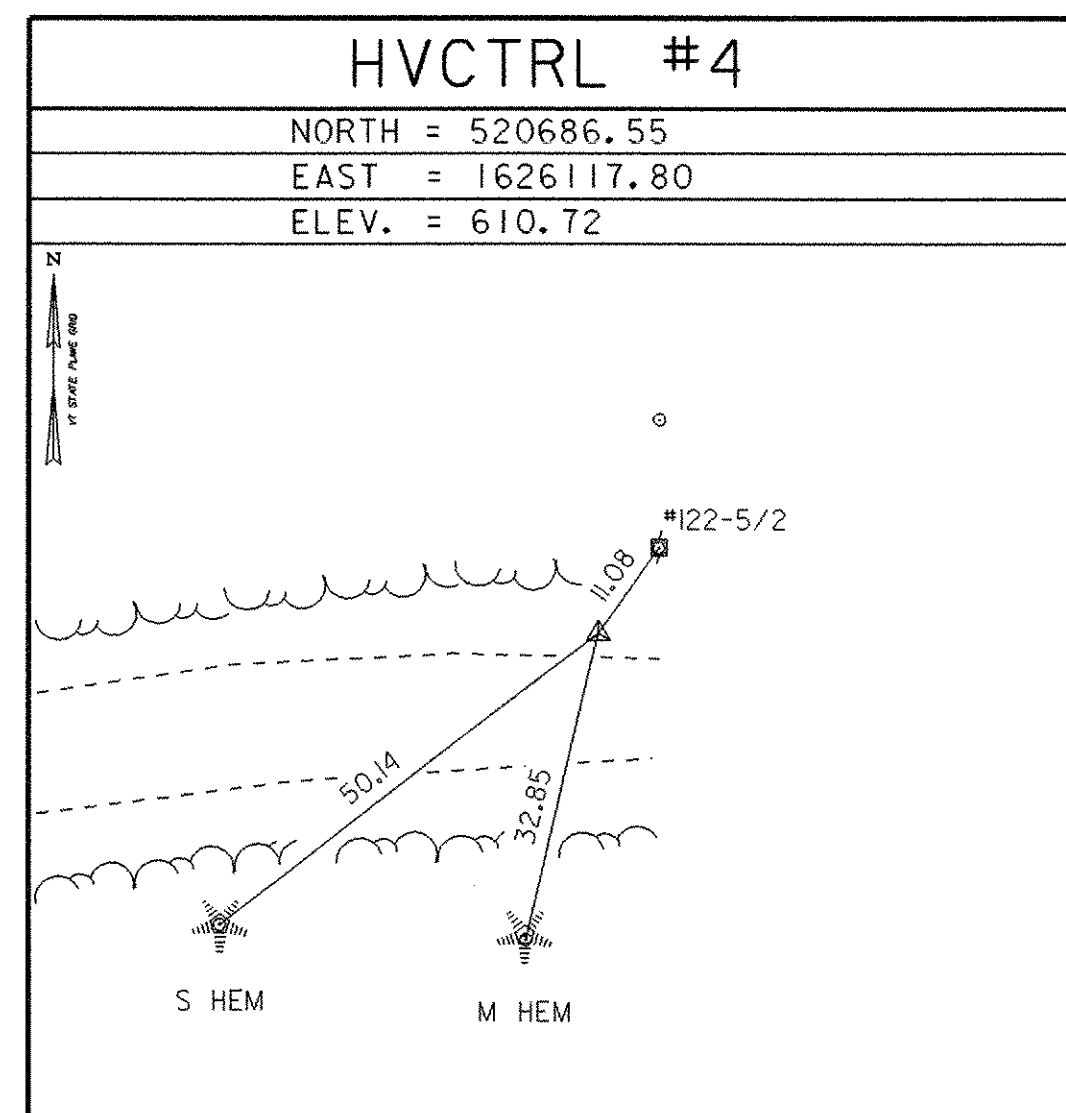
HVCTRL # 2

STANDARD DISK STAMPED
East Randolph Az Mk
N = 520093.26
E = 1626438.54
ELEV. = 647.11

* To reach from the intersection of VT route 14 and VT route 66 in East Randolph go south along route 14 for 0.6 mi to the East Randolph School on the left and the site of the mark on the left, in a lawn in front of the school. The mark is set 4 in below the ground surface in the top of a 12 in diameter concrete monument poured 4 ft deep. It is 22 ft east of and about 0.3 ft lower than the centerline of route 14, 42.7 ft north of the centerline of the most southern entrance drive to the school, 89 ft west northwest of the southwest corner of the school building, and 59 ft southwest of pole # 61/20 and a fiberglass witness post.

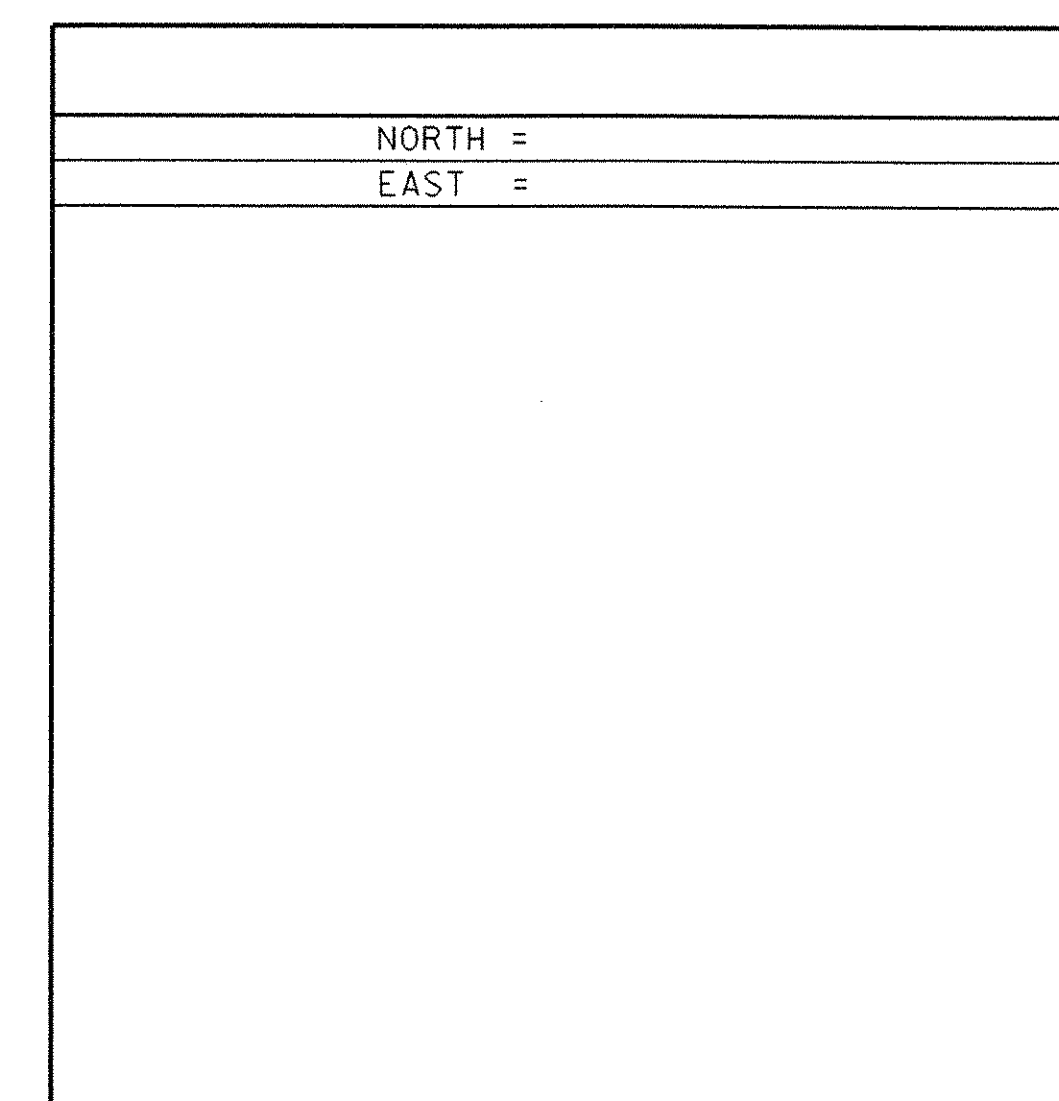
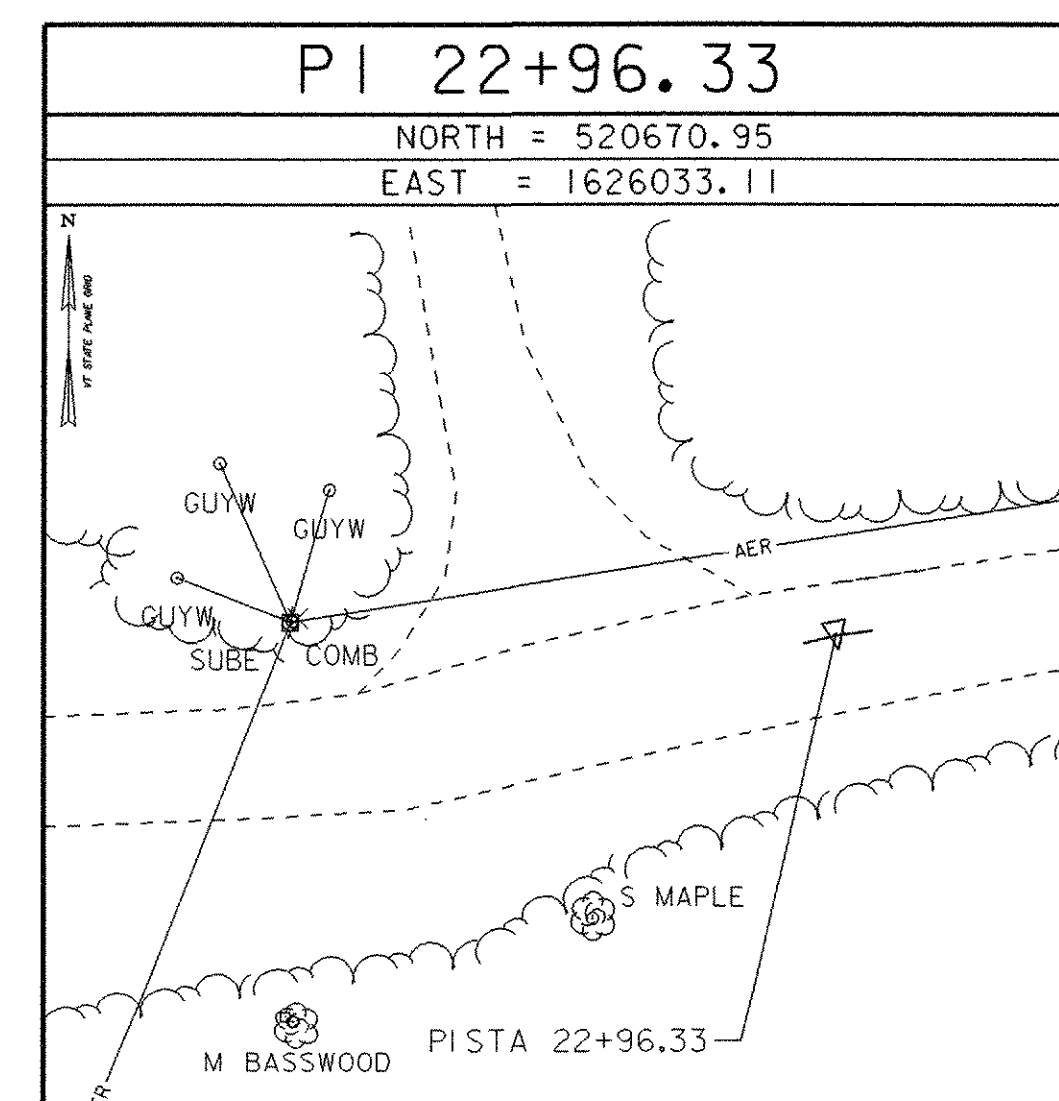
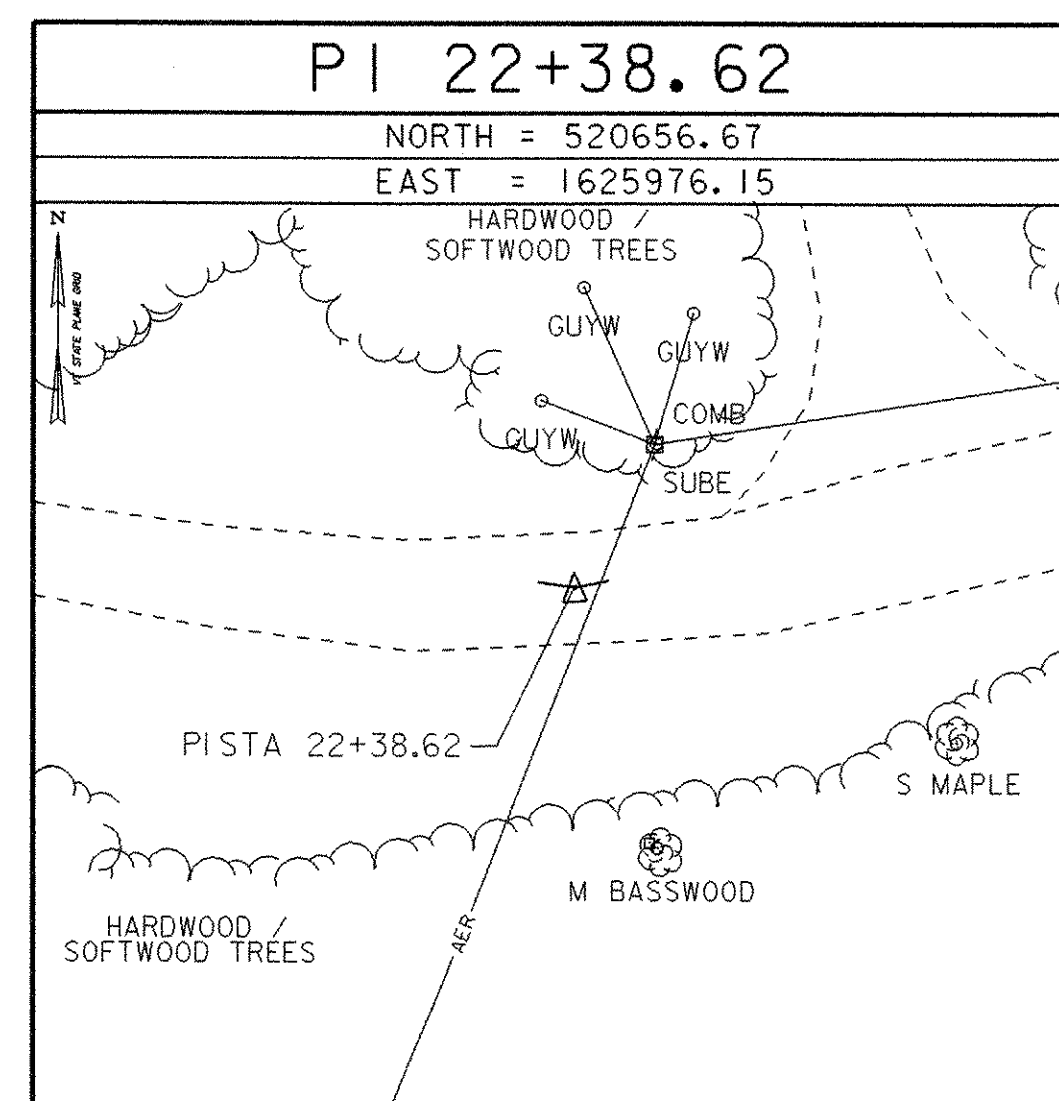
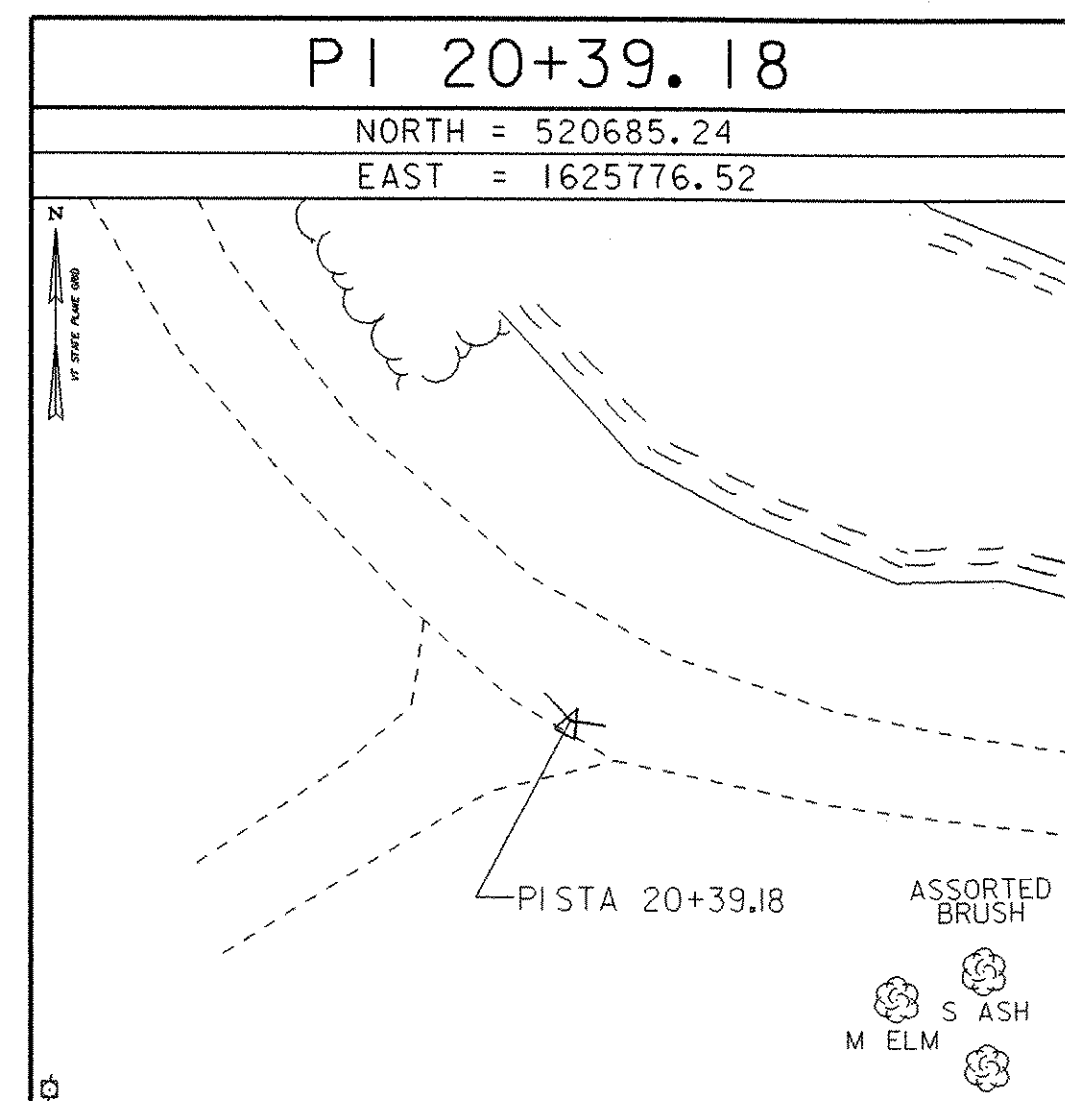
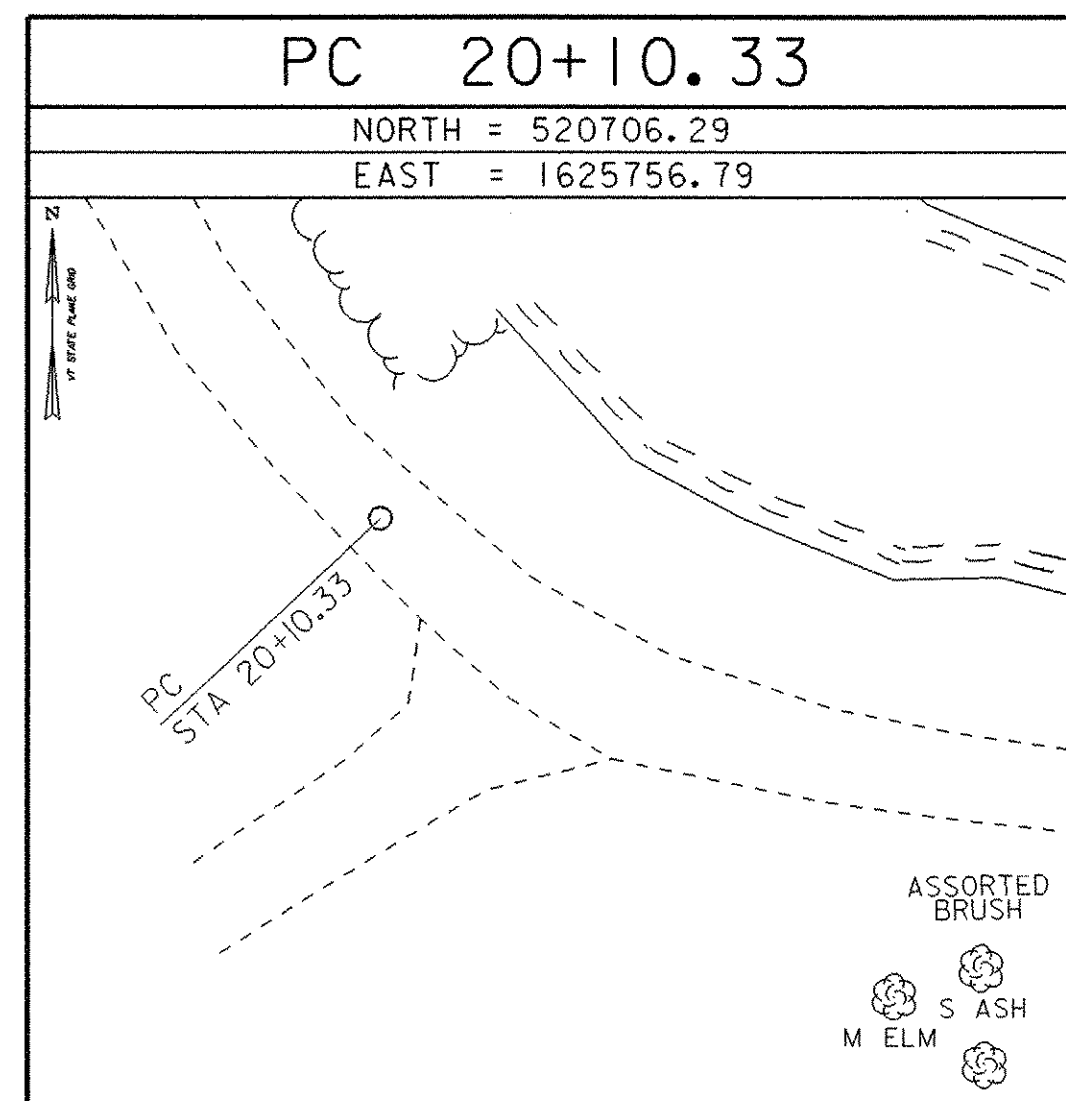
* DESCRIPTION PROVIDED BY VERMONT AGENCY OF TRANSPORTATION GEODETIC SURVEY UNIT

TRAVERSE TIES



MAIN TRAVERSE COMPLETED 08/24/05 by R. Gilman P.C. & P. Winters (VTrans)

ALIGNMENT COORDINATES



DATUM

VERTICAL	NAVD88
HORIZONTAL	NAD 83(96)
ADJUSTMENT	Compass

PROJECT NAME: RANDOLPH
PROJECT NUMBER: BHO 1444 (44)

FILE NAME: z04j1461e.dgn	PLOT DATE: 26-JUN-2007
PROJECT LEADER: S. HODGDON	DRAWN BY: VTRANS/KDW
DESIGNED BY: K. ZIENKIEWICZ	CHECKED BY: S. HODGDON
TIE SHEET	SHEET 8 OF 39

