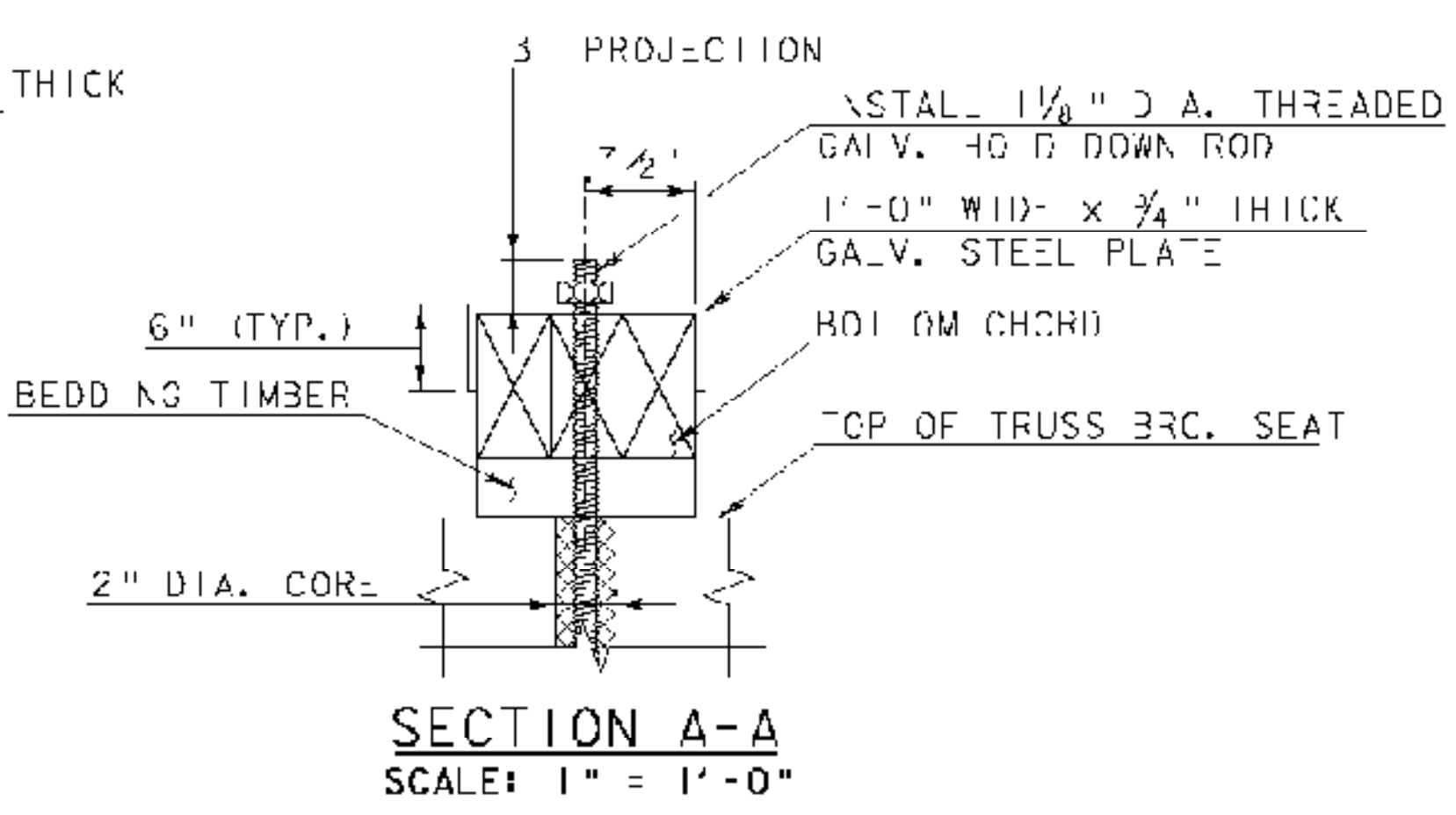
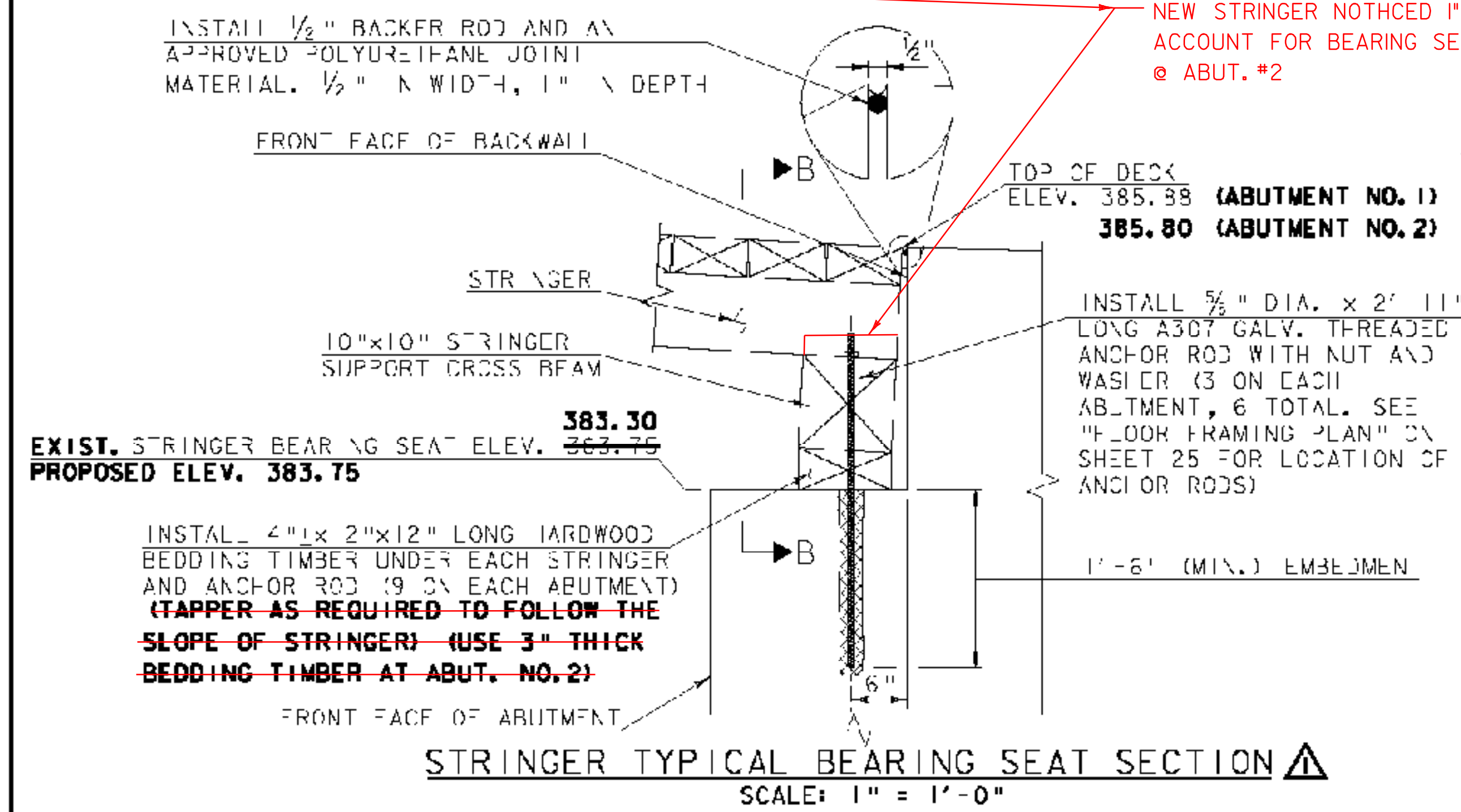


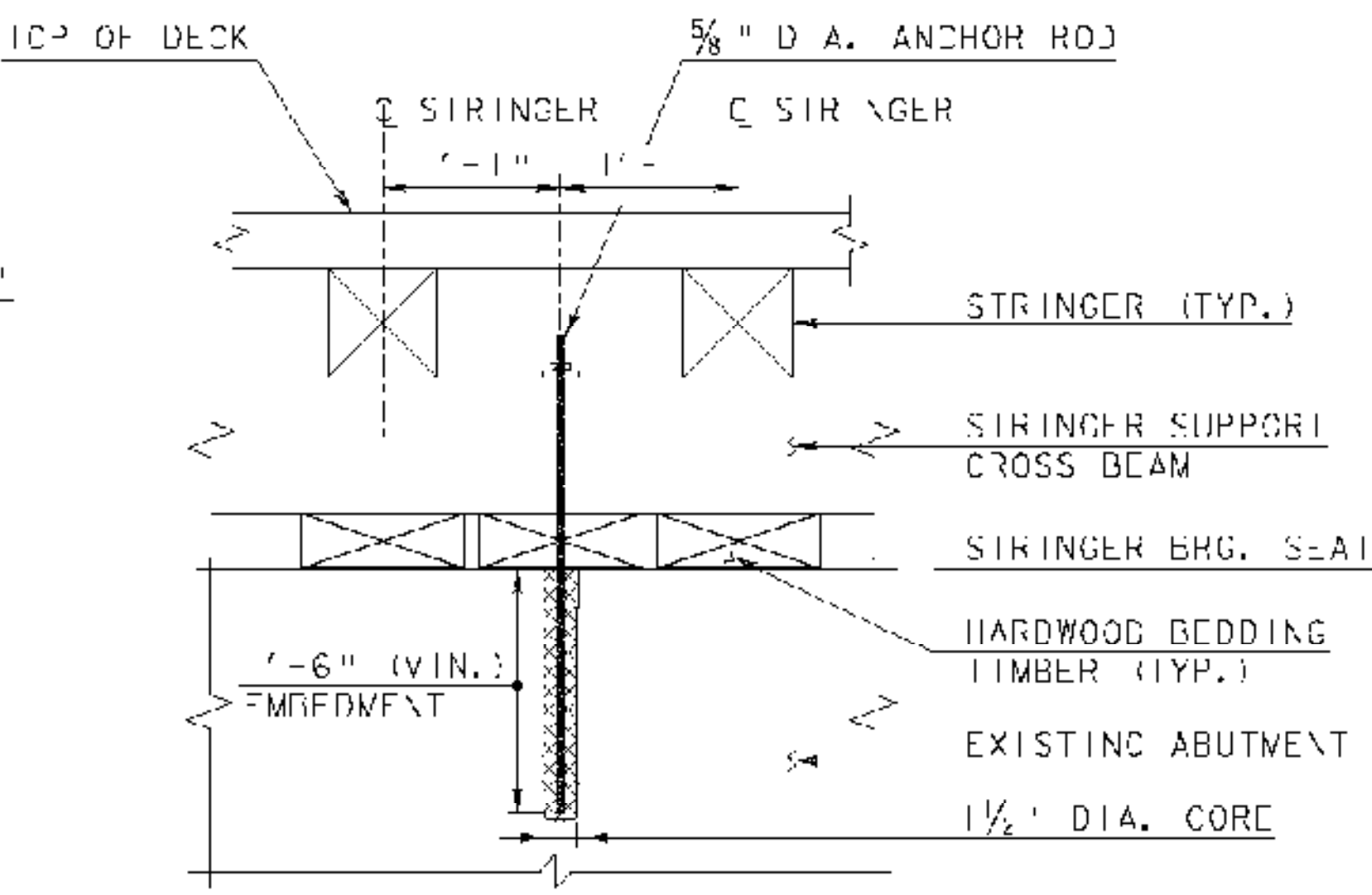
TRUSS TYPICAL BEARING SEAT SECTION
SCALE: 1" = 1'-0"



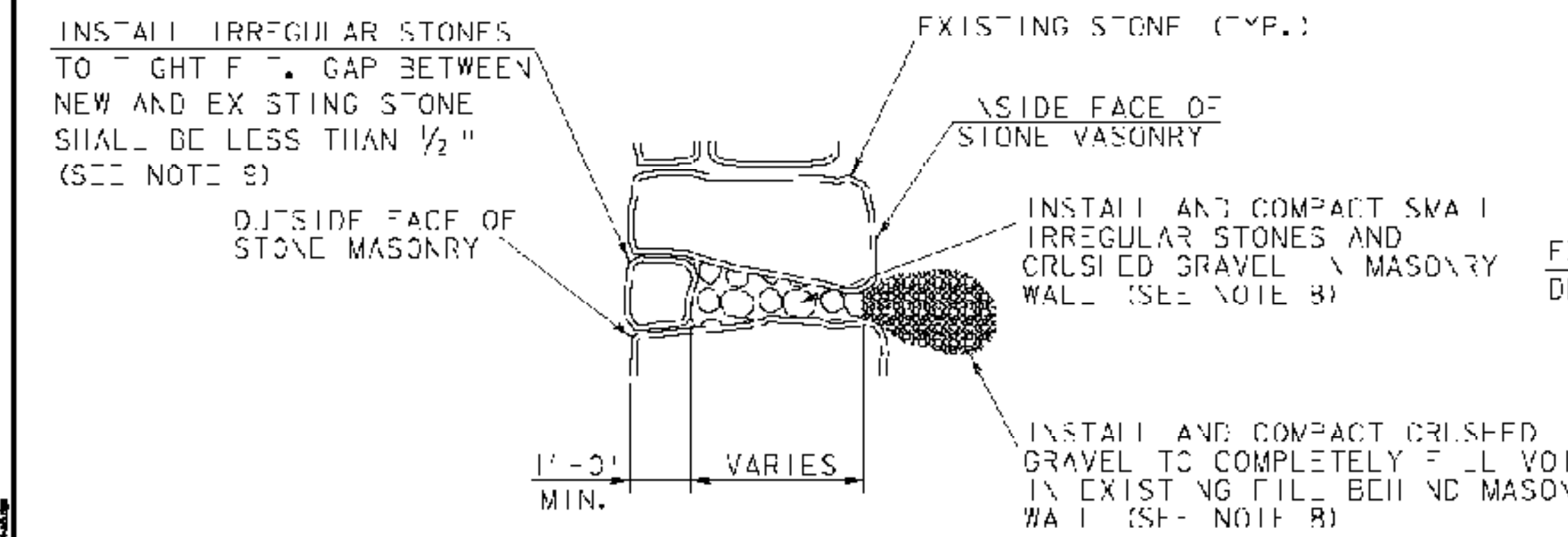
SECTION A-A
SCALE: 1" = 1'-0"



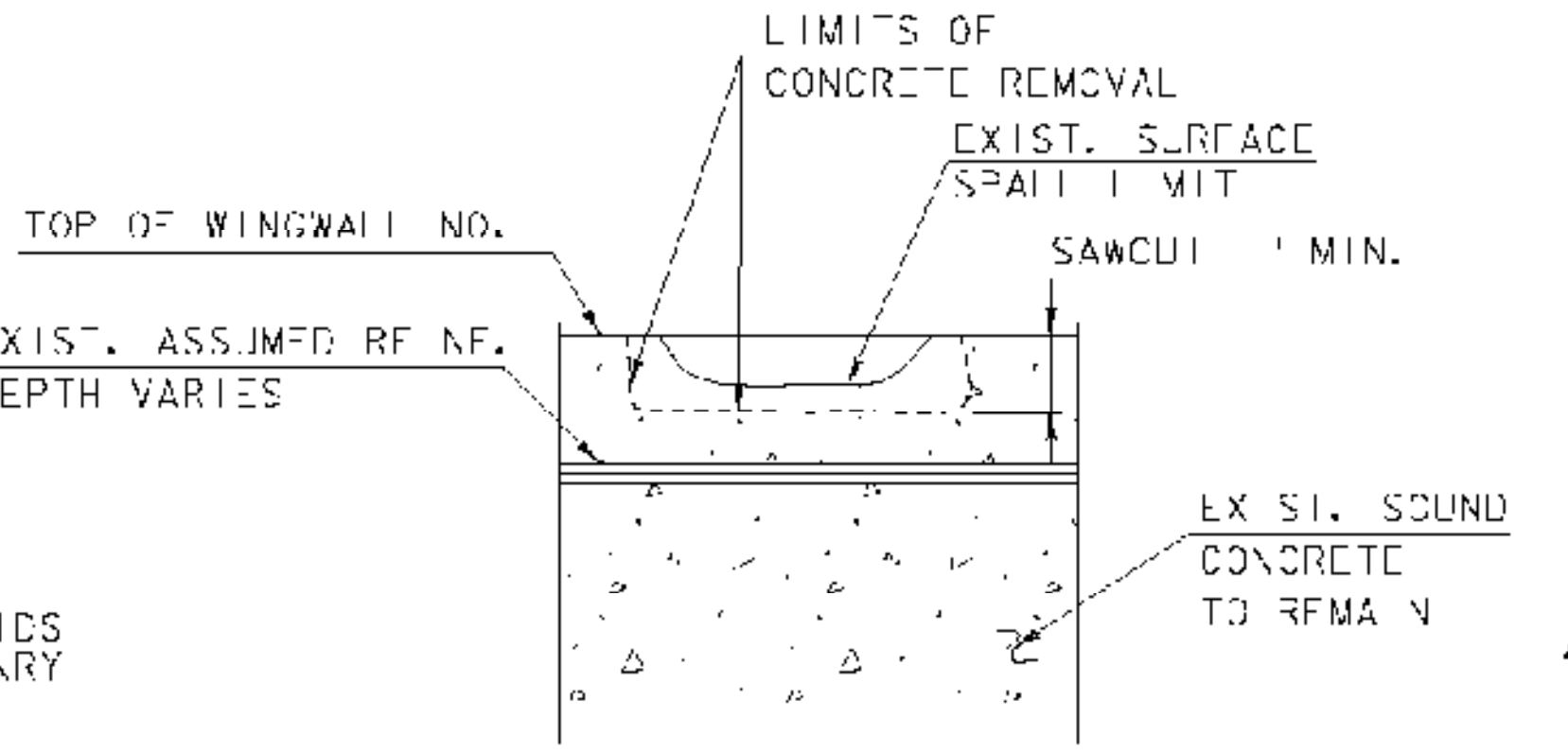
STRINGER TYPICAL BEARING SEAT SECTION
SCALE: 1" = 1'-0"



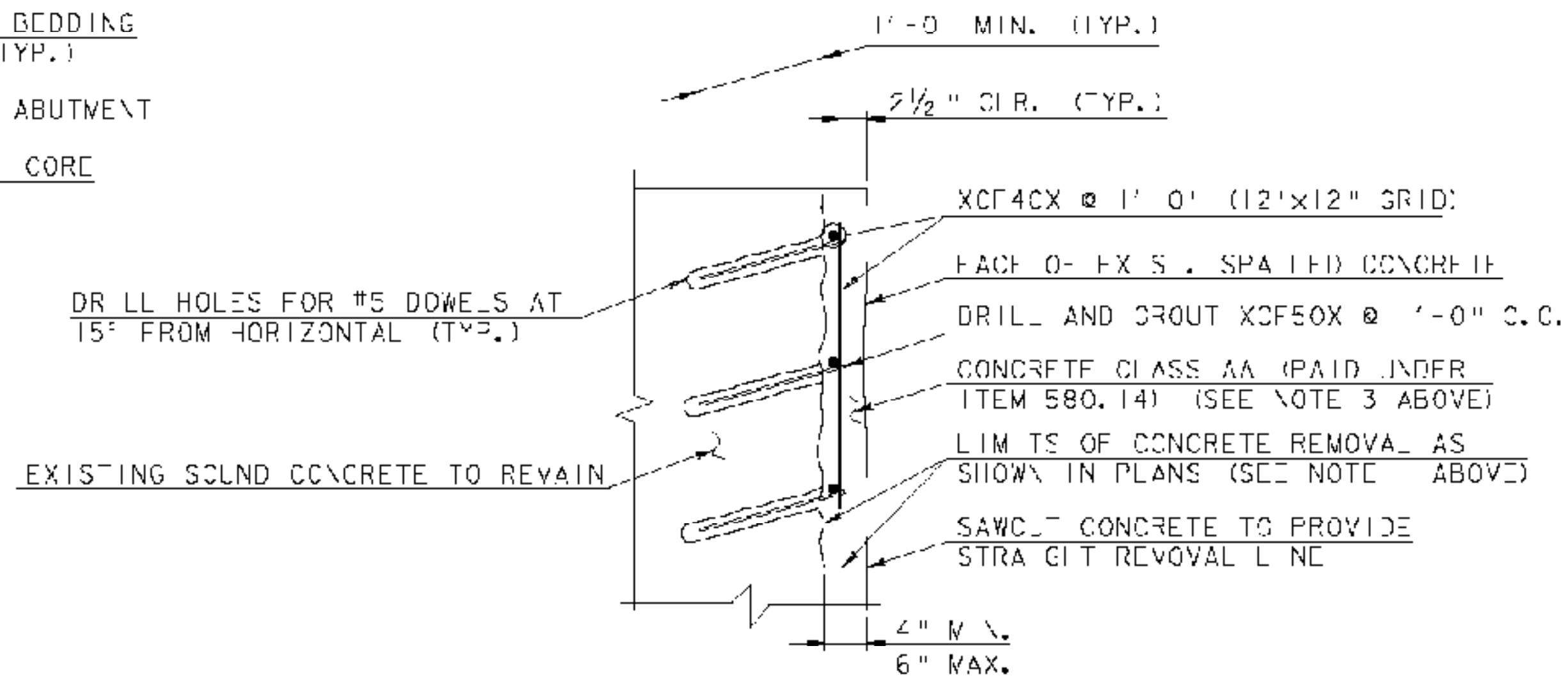
SECTION B-B
SCALE: 1" = 1'-0"



STONE MASONRY REPAIR DETAIL
NOT TO SCALE



HORIZONTAL CONCRETE REPAIR DETAIL
(SEE NOTES 1 - 5)
NOT TO SCALE



DOWELED CONCRETE REPAIR DETAIL
NOT TO SCALE

SHEET NOTES:

1. PREPARE SPALLED AREAS BY REMOVAL OF ALL UNSOUND CONCRETE TO THE DEPTH SHOWN BY SQUARE CUTTING REPAIR AREAS (PAID UNDER ITEM 580.14). FEATHERED REMOVAL EDGES WILL NOT BE PERMITTED. MINIMUM REPAIR AREA SHALL BE 1' x 1'.
2. AFTER CONCRETE REMOVAL, THE REPAIR SURFACE SHALL BE THOROUGHLY CLEANED OF INCURIOUS RUST, CONCRETE, DIRT, GREASE, OR ANY OTHER BOND INHIBITING MATERIALS.
3. REPAIR SURFACE WITH CONCRETE CLASS AA (PAID UNDER ITEM 580.14). A HIGH RANGE WATER REDUCING ADMIXTURE CONFORMING TO THE REQUIREMENTS OF STANDARD SPECIFICATIONS SUBJECT CN 725.02 (C) SHALL BE USED FOR THE CONCRETE. DOSAGE SHALL BE AS RECOMMENDED BY THE MANUFACTURER TO PRODUCE A SLUMP OF 6-8 INCHES.
4. JACKHAMMERS HEAVIER THAN THE NOMINAL 5 POUND CLASS SHALL NOT BE USED.
5. CHIPPING HAMMERS HEAVIER THAN NOMINAL 5 POUND CLASS SHALL NOT BE USED TO REMOVE CONCRETE FROM BENEATH REINFORCING BARS.
6. CORING AND INSTALLATION OF CROWD REINFORCING STEEL SHALL BE PAID UNDER ITEM 507.16, DRILLING AND GROUTING DOWELS.
7. PAYMENT UNDER ITEM 900.675, SPECIAL PROVISION (REPAIRING STONE MASONRY) SHALL INCLUDE COMPACTION OF LOOSE FILL BEHIND WALL STONES, RESETTING OF STONES AND THE ADDITION OF SIMILAR STONES AS REQUIRED.
8. COMPACT MATERIAL BEHIND AND INTO MASONRY WALL BY USING TAMPING RODS OR OTHER METHODS ACCEPTABLE TO THE RESIDENT ENGINEER (PAID UNDER ITEM 900.675, SPECIAL PROVISION (REPAIRING STONE MASONRY)).
9. NEW STONES SHALL CLOSELY MATCH THE COLOR, TEXTURE AND PATTERN OF EXISTING STONES. STONES SHALL BE APPROVED BY THE ENGINEER PRIOR TO USE.
10. THE HOLD DOWN RODS AND ANCHOR RODS SHALL BE GROUTED INTO ABUTMENTS USING SPEC BOND 200 BY CONSPEC, RESCON 301 BY SYMONS CORPORATION OR DURALCRETE BY TAMMS INDUSTRIES OR OTHER EQUIVALENT APPROVED EPOXY MORTAR IN LIEU OF MORTAR TYPE IV.
11. THE DRILLING AND GROUTING, HOLD DOWN RODS, ANCHOR RODS, NUTS, WASHERS AND STEEL PLATES SHALL BE PAID UNDER ITEM 900.620, SPECIAL PROVISION (BEARING DEVICE ASSEMBLY, COVERED BRIDGE) COMPLETE IN PLACE.

REVISD DUE TO CHANGED FIELD CONDITIONS (10/24/2008)

SCALE: 1" = 1'-0"

1 3 6 3 0

MCEE	
Default	
474 PROJECT NO.	
004215	

PROJECT NAME:	FAIRFIELD	PLOT DATE:	0/24/2008
PROJECT NUMBER:	BF-0148(32)	DRAWN BY:	J.R. McCLIA
FILE NAME:	204114dell0112-AB.dwg	CHECKED BY:	S.T. JAMES
PROJECT LEADER:	J.F. WEAVER	SHEET:	32 OF 35
DESIGNED BY:	J.B. CJA		
BRIDGE DETAILS			

Hoyle, Tanner & Associates, Inc.