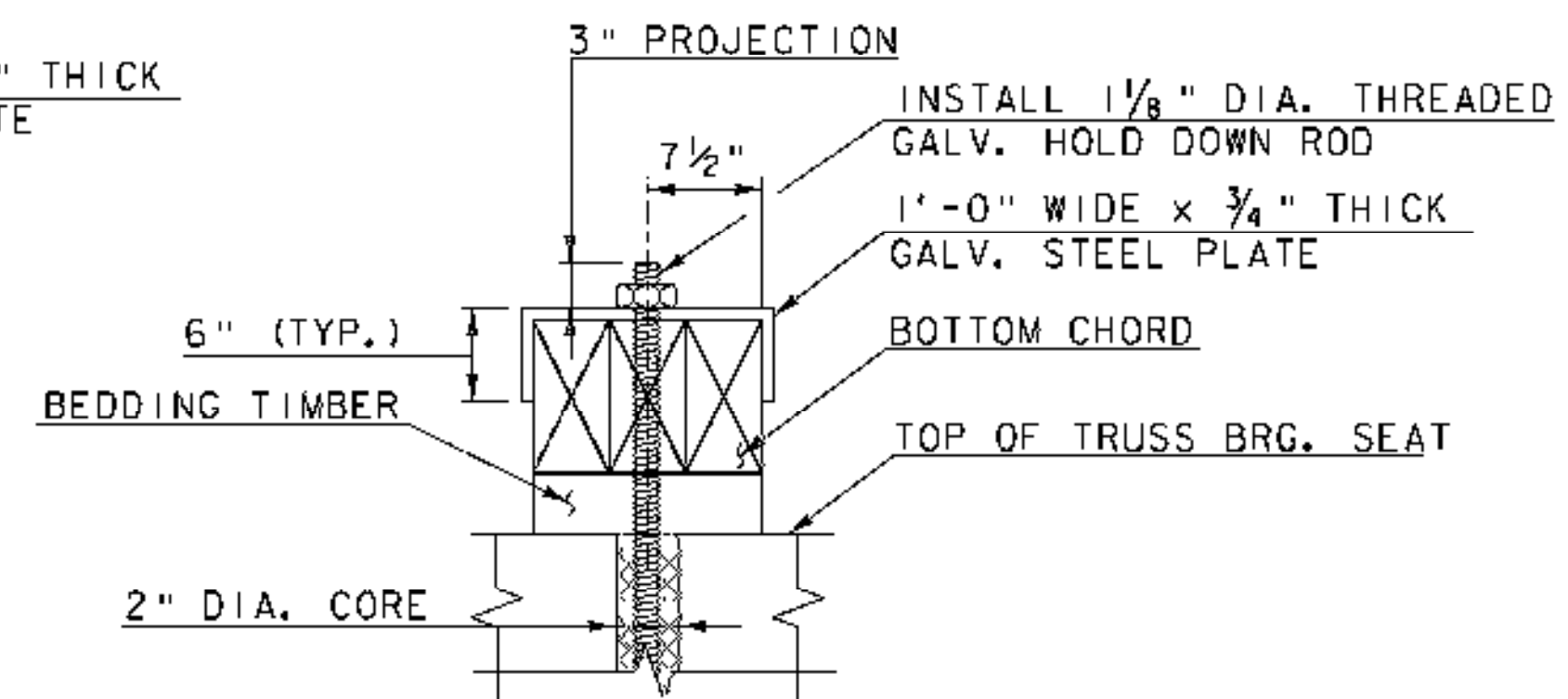
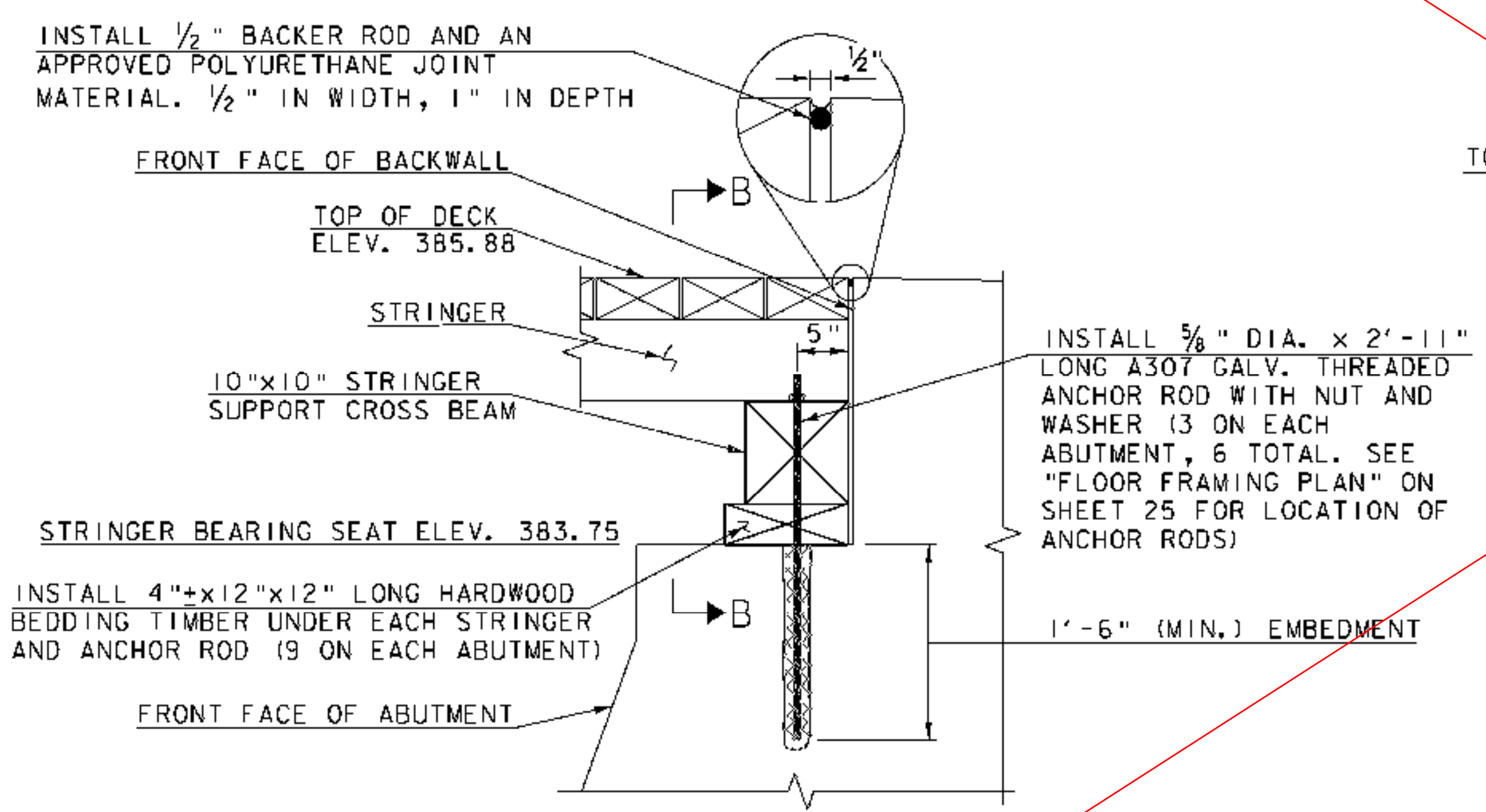


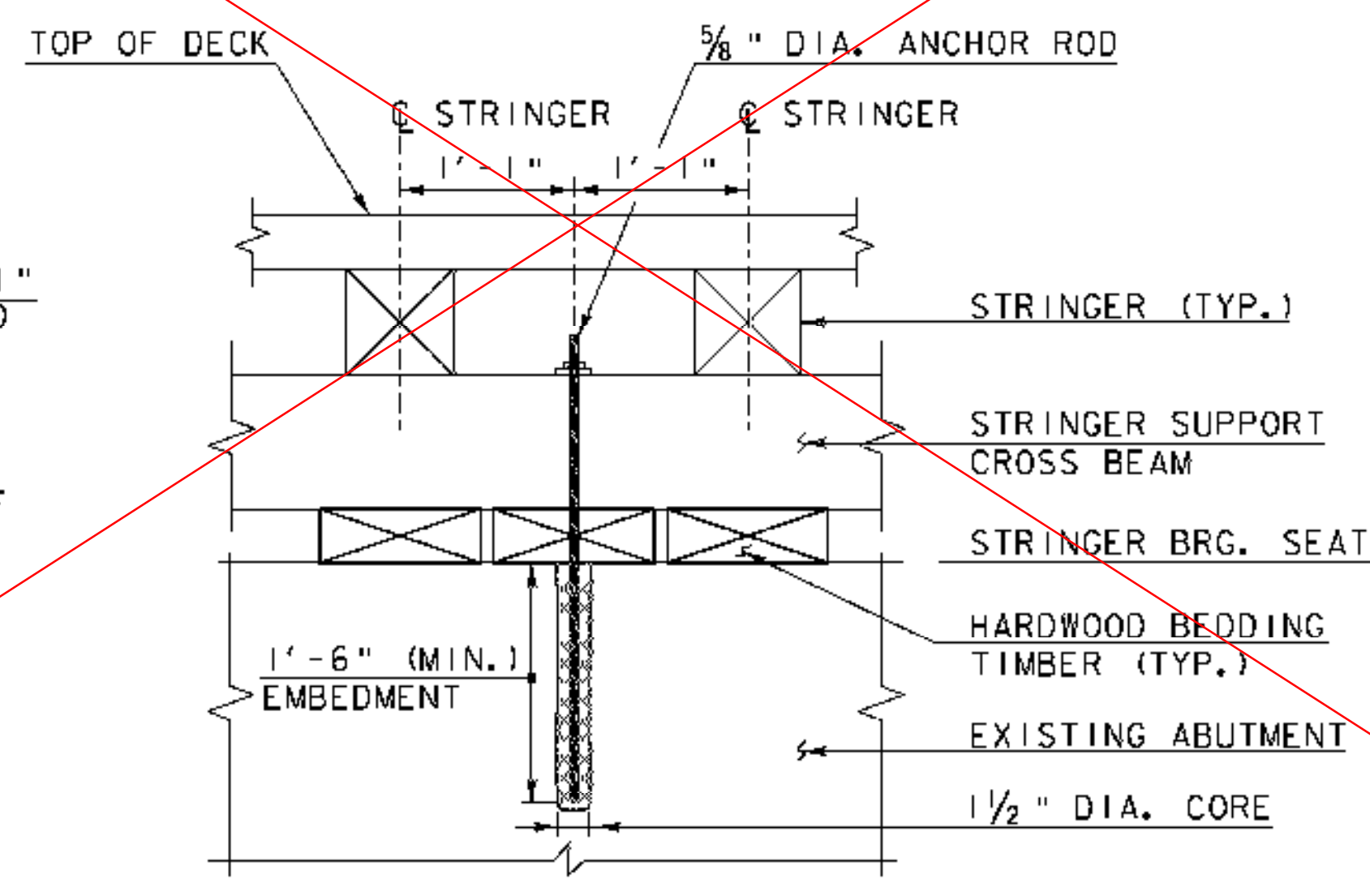
**TRUSS TYPICAL BEARING SEAT SECTION**  
SCALE: 1" = 1'-0"



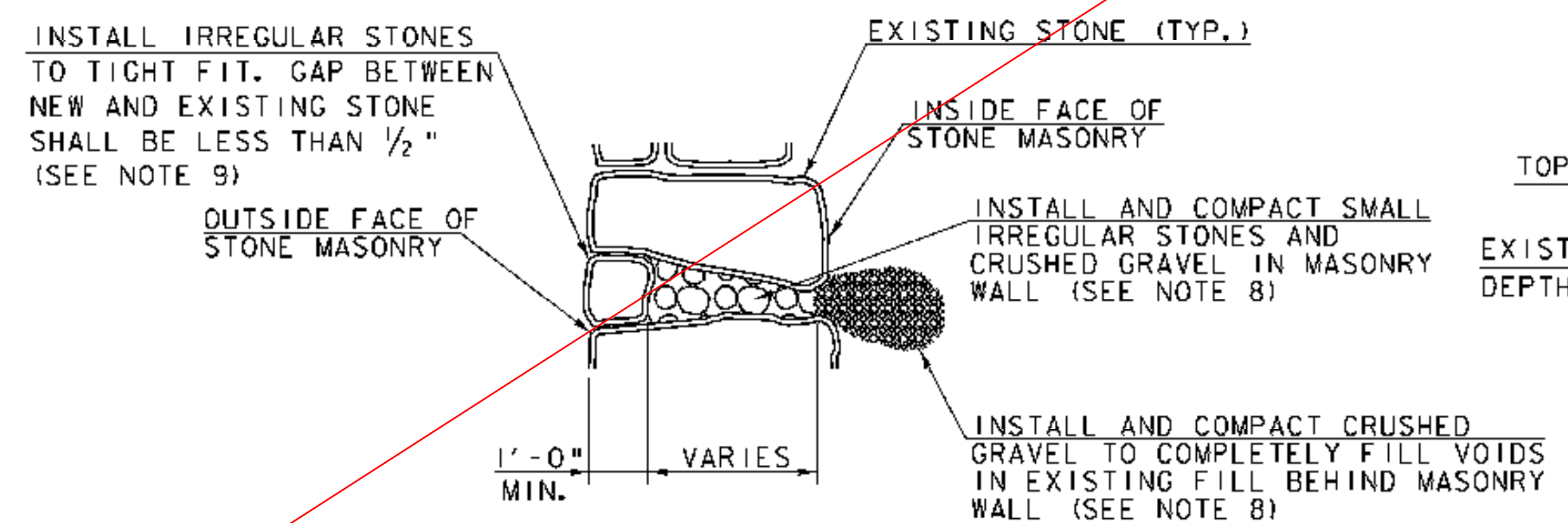
**SECTION A-A**  
SCALE: 1" = 1'-0"



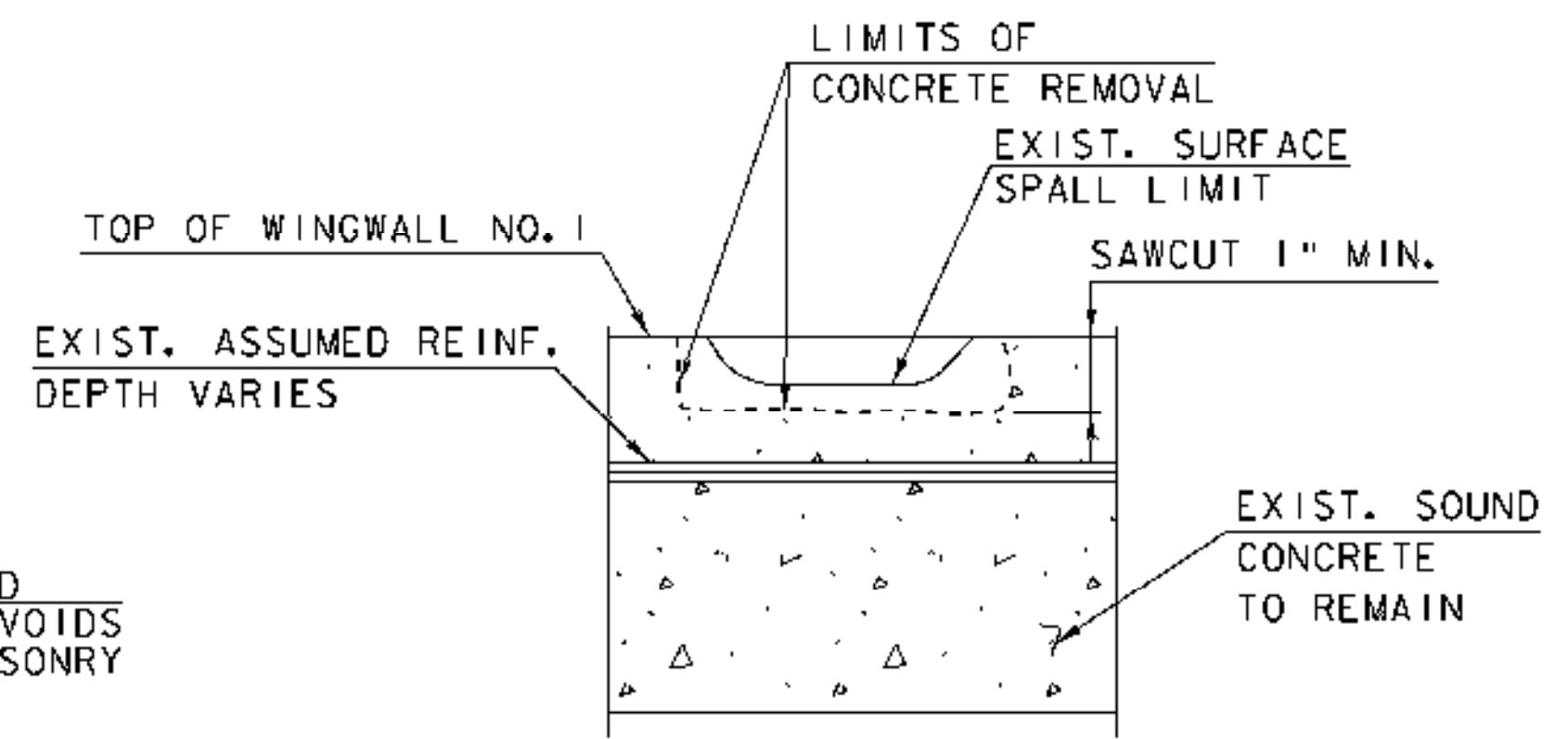
**STRINGER TYPICAL BEARING SEAT SECTION**  
SCALE: 1" = 1'-0"



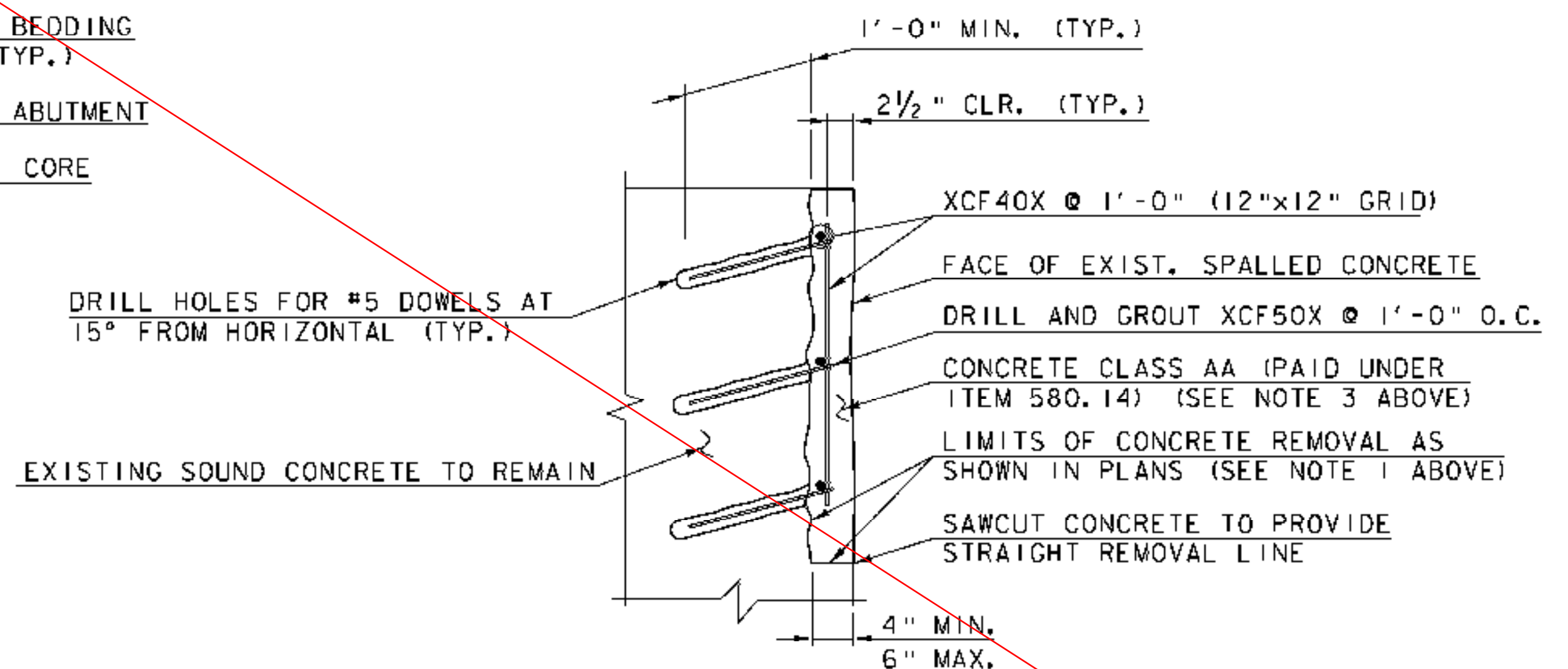
**SECTION B-B**  
SCALE: 1" = 1'-0"



**STONE MASONRY REPAIR DETAIL**  
NOT TO SCALE



**HORIZONTAL CONCRETE REPAIR DETAIL**  
(SEE NOTES 1 - 5)  
NOT TO SCALE



**DOWELED CONCRETE REPAIR DETAIL**  
NOT TO SCALE

**SHEET NOTES:**

1. PREPARE SPALLED AREAS BY REMOVAL OF ALL UNSOUND CONCRETE TO THE DEPTH SHOWN BY SQUARE CUTTING REPAIR AREAS (PAID UNDER ITEM 580.14). FEATHERED REMOVAL EDGES WILL NOT BE PERMITTED. MINIMUM REPAIR AREA SHALL BE 1'x1'.
2. AFTER CONCRETE REMOVAL, THE REPAIR SURFACE SHALL BE THOROUGHLY CLEANED OF INJURIOUS RUST, CONCRETE, DIRT, GREASE, OR ANY OTHER BOND INHIBITING MATERIALS.
3. REPAIR SURFACE WITH CONCRETE CLASS AA (PAID UNDER ITEM 580.14). A HIGH RANGE WATER REDUCING ADMIXTURE CONFORMING TO THE REQUIREMENTS OF STANDARD SPECIFICATIONS SUBSECTION 725.02 (h) SHALL BE USED FOR THE CONCRETE. DOSAGE SHALL BE AS RECOMMENDED BY THE MANUFACTURER TO PRODUCE A SLUMP OF 6-8 INCHES.
4. JACKHAMMERS HEAVIER THAN THE NOMINAL 15 POUND CLASS SHALL NOT BE USED.
5. CHIPPING HAMMERS HEAVIER THAN NOMINAL 15 POUND CLASS SHALL NOT BE USED TO REMOVE CONCRETE FROM BENEATH REINFORCING BARS.
6. CORING AND INSTALLATION OF GROUTED REINFORCING STEEL SHALL BE PAID UNDER ITEM 507.16, DRILLING AND GROUTING DOWELS.
7. PAYMENT UNDER ITEM 900.675, SPECIAL PROVISION (REPAIRING STONE MASONRY) SHALL INCLUDE COMPACTION OF LOOSE FILL BEHIND WALL STONES, RESETTING OF STONES AND THE ADDITION OF SIMILAR STONES AS REQUIRED.
8. COMPACT MATERIAL BEHIND AND INTO MASONRY WALL BY USING TAMPING RODS OR OTHER METHODS ACCEPTABLE TO THE RESIDENT ENGINEER (PAID UNDER ITEM 900.675, SPECIAL PROVISION (REPAIRING STONE MASONRY)).
9. NEW STONES SHALL CLOSELY MATCH THE COLOR, TEXTURE AND PATTERN OF EXISTING STONES. STONES SHALL BE APPROVED BY THE ENGINEER PRIOR TO USE.
10. THE HOLD DOWN RODS AND ANCHOR RODS SHALL BE GROUTED INTO ABUTMENTS USING SPEC BOND 200 BY CONSPEC, RESCON 304 BY SYMONS CORPORATION OR DURALCRETE BY TAMMS INDUSTRIES OR OTHER EQUIVALENT APPROVED EPOXY MORTAR IN LIEU OF MORTAR TYPE IV.
11. THE DRILLING AND GROUTING, HOLD DOWN RODS, ANCHOR RODS, NUTS, WASHERS AND STEEL PLATES SHALL BE PAID UNDER ITEM 900.620, SPECIAL PROVISION (BEARING DEVICE ASSEMBLY, COVERED BRIDGE) COMPLETE IN PLACE.

SEE REVISED SHEET 32R

SCALE: 1" = 1'-0"

19630

Hoyle, Tanner & Associates, Inc.

PROJECT NAME:	FAIRFIELD	FILE NAME:	z04j44detail4.dgn	PLOT DATE:	4/25/2008
PROJECT NUMBER:	BHO 1448(32)	PROJECT LEADER:	J.H.WEAVER	DRAWN BY:	J.B.McQUAID
		DESIGNED BY:	J.BICJA	CHECKED BY:	S.T.JAMES
				SHEET	32 OF 36