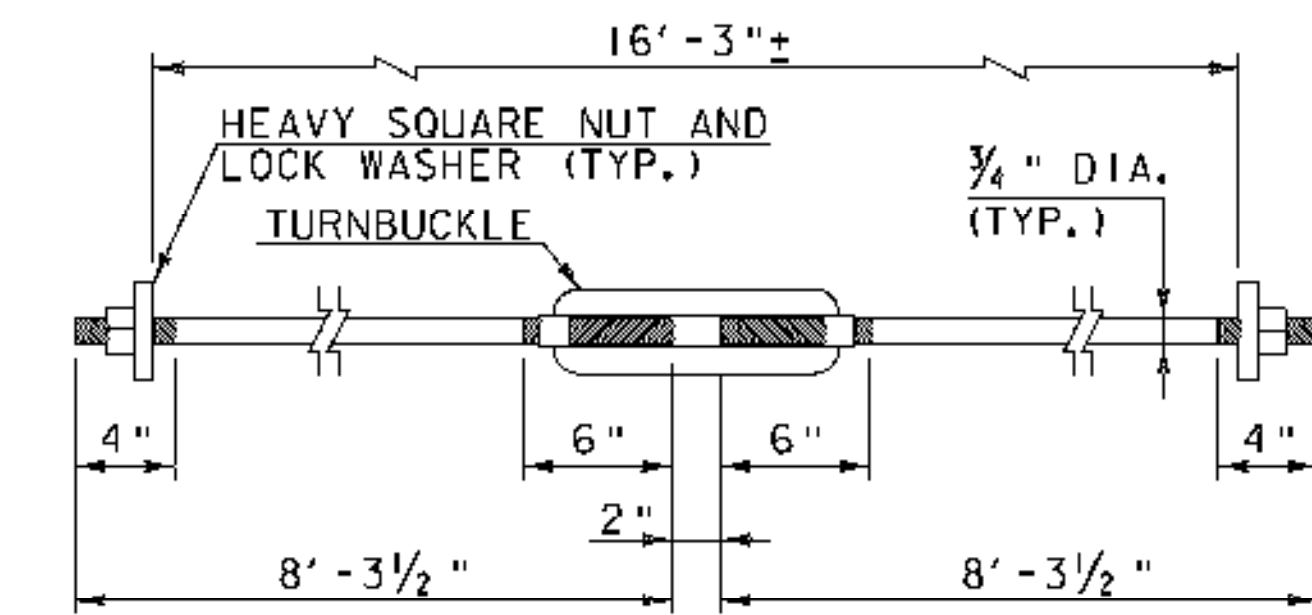


UPPER LATERAL BRACING PLAN

NOTE: RAFTERS AND ROOF BOARDS NOT SHOWN FOR CLARITY
SCALE: 1/4" = 1'-0"



GALVANIZED TIE ROD ASSEMBLY

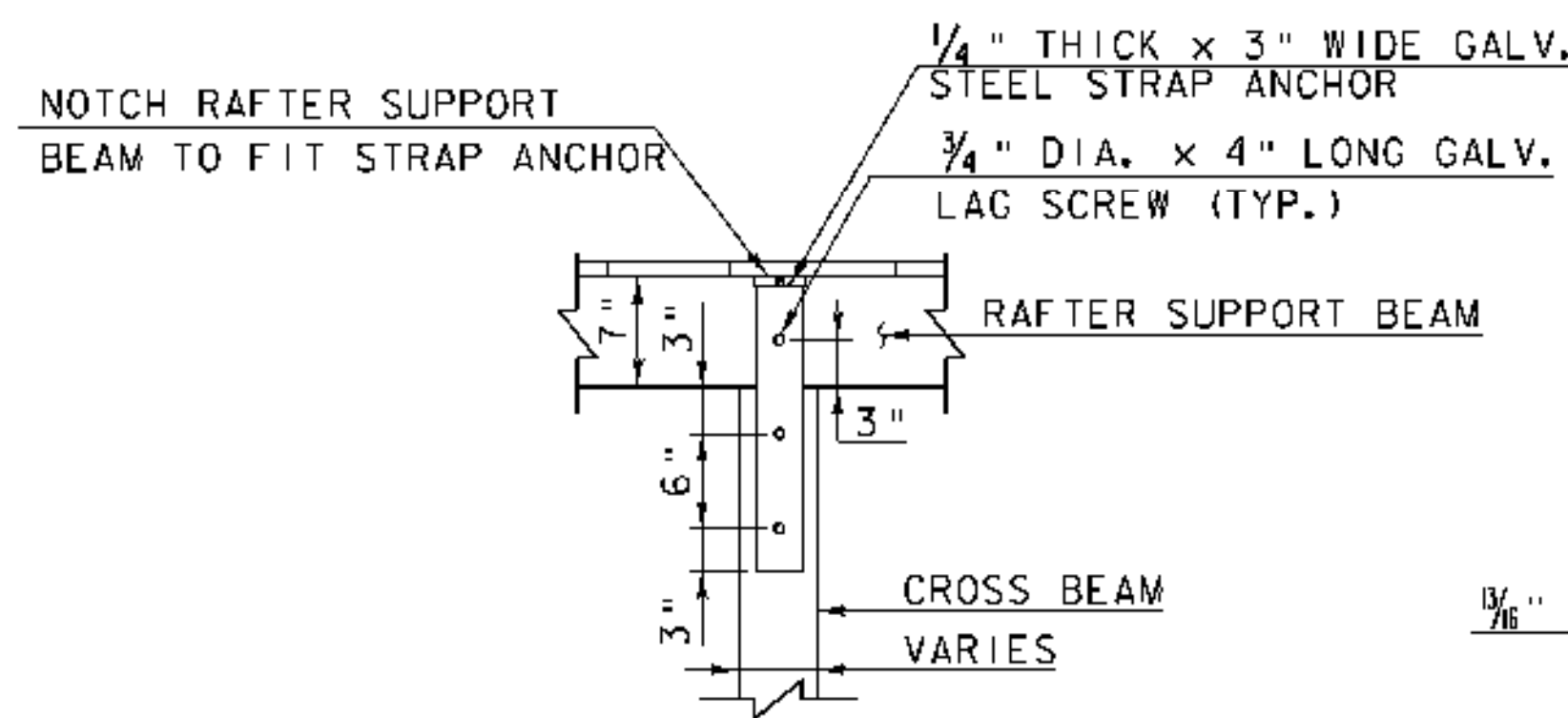
(8 TOTAL - 4 UPPER LATERAL BRACING & 4 LOWER LATERAL BRACING)
NOTE: TIGHTEN NUTS AND TURNBUCKLES SNUG BUT NOT SO TIGHT AS TO CAUSE CRUSHING OF WOOD BEHIND THE STEEL PLATES.
SCALE: 1/2" = 1'-0"

PLAN NOTES:

1. THE TOP LATERAL BRACING TENONS SHALL BE 2 1/2" IN DEPTH AND CENTERED VERTICALLY ON THE CROSS BEAM.
2. TOP LATERAL BRACING JOINTS NEAR THE CROSS BEAMS SHALL HAVE SIMILAR MORTISE 2 1/2" DEEP CENTERED VERTICALLY ON THE CROSS BEAM.

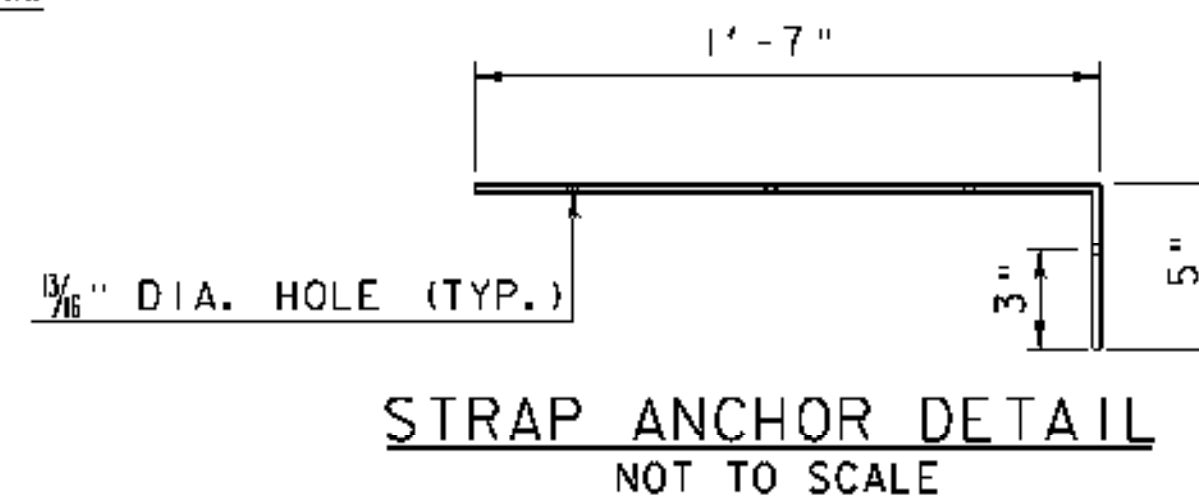
LEGEND:

- NEW MEMBER
- MEMBER TO BE REMOVED (PAID UNDER ITEM 529.20)
- MEMBER TO BE REPLACED
- LOCATION OF EXISTING BRACE TO REMAIN
- LOCATION OF NEW OR REPLACED KNEE BRACING
- TRUSS NODE
- 5"x6" CROSS BEAM
- 8"x8" CROSS BEAM



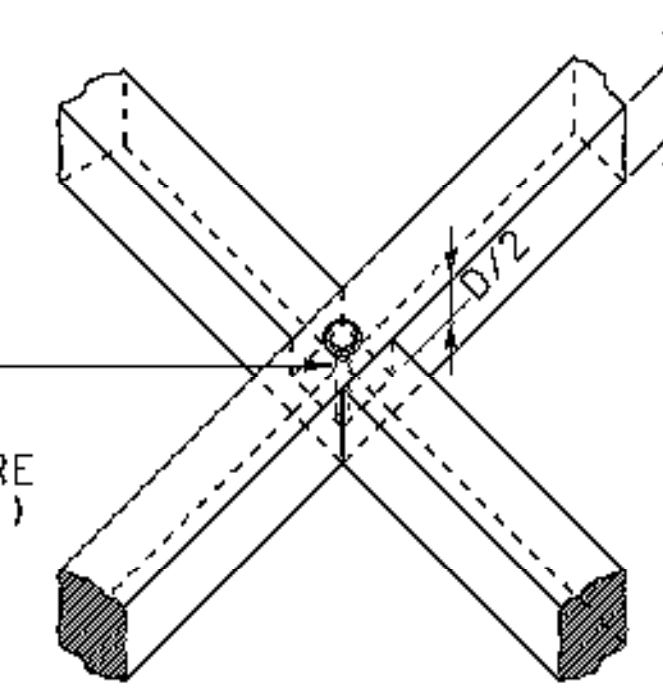
CROSSBEAM ANCHOR DETAIL

NOTE: TYPICAL OF ALL LOCATIONS EXCEPT NODES 4S, 4N, 6S AND 6N
SCALE: 1" = 1'-0"

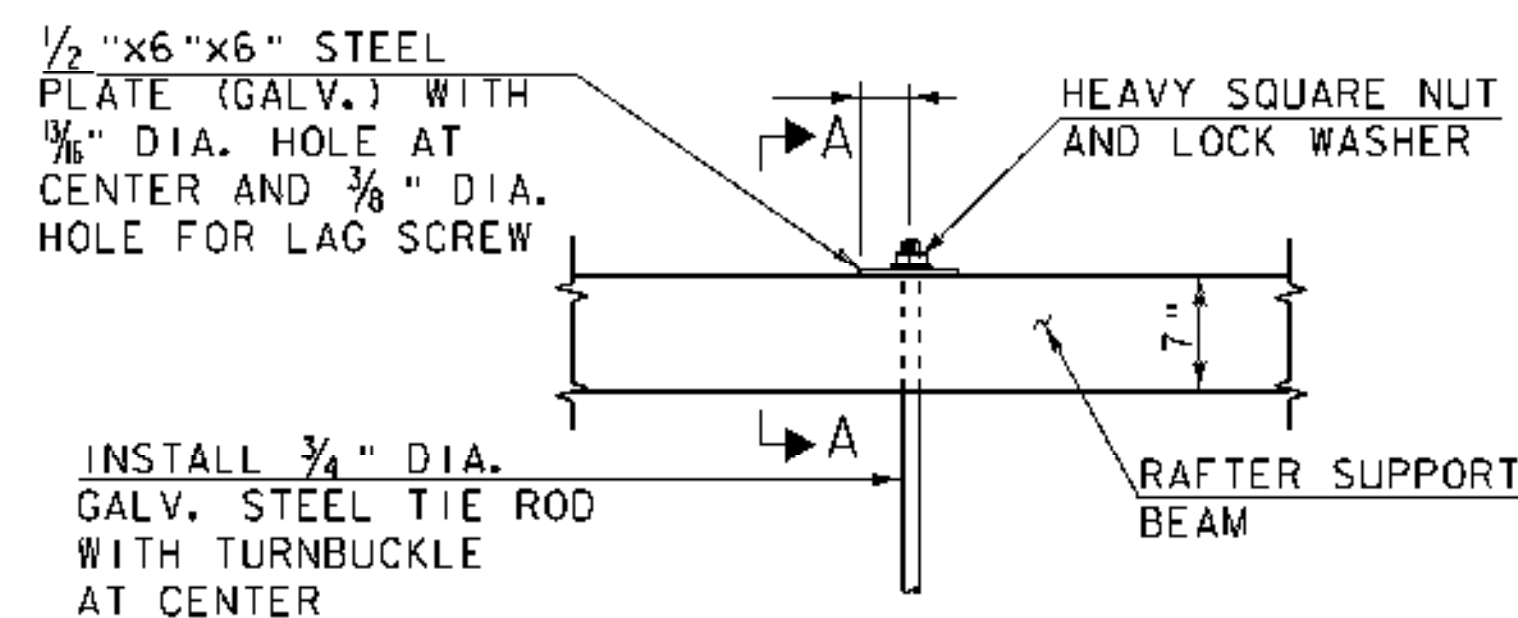


STRAP ANCHOR DETAIL
NOT TO SCALE

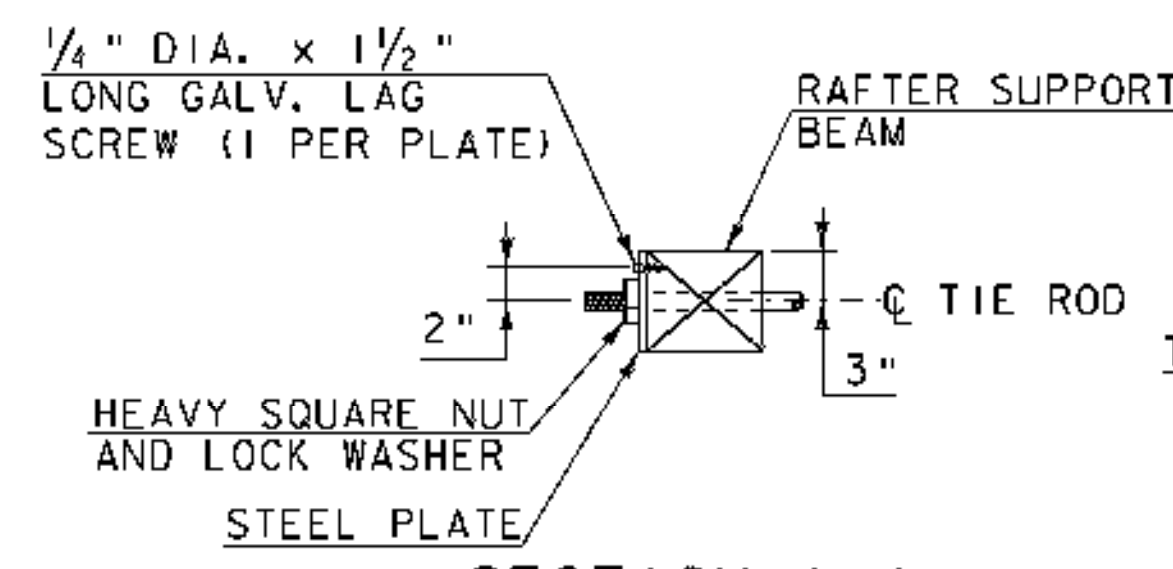
NOTCH BOTH MEMBERS TO PROVIDE FLUSH LAP JOINT, SECURE WITH 1/2" DIA. CARRIAGE BOLT, HEAVY SQUARE NUT AND Ogee WASHER (GALV.)



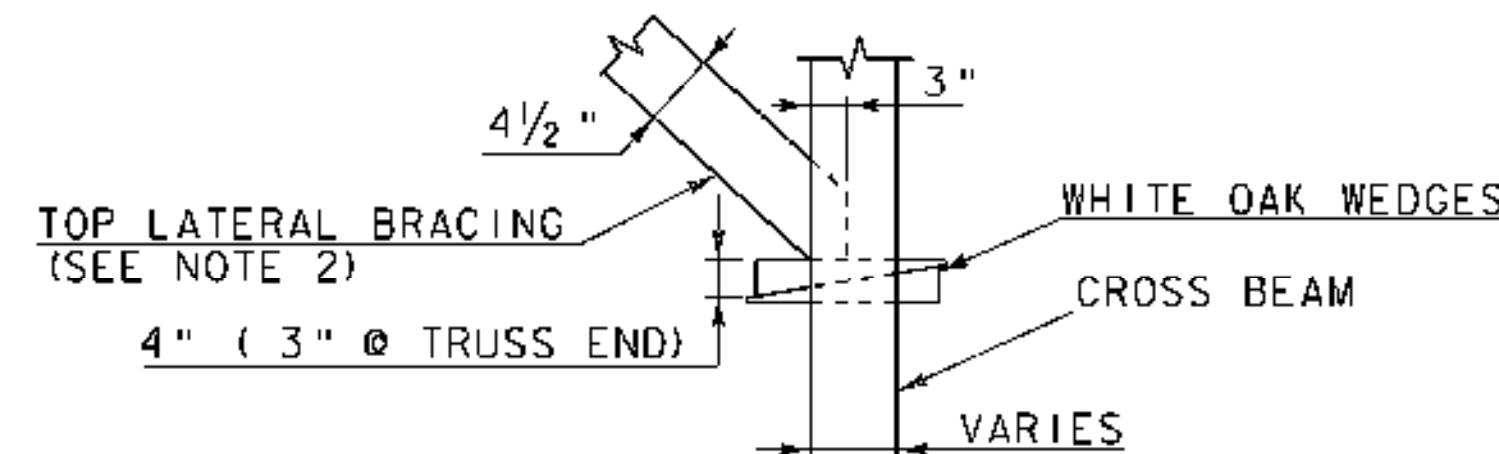
DETAIL "B"
SCALE: 3/4" = 1'-0"



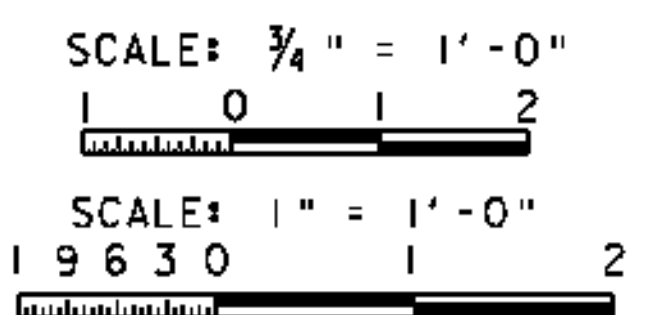
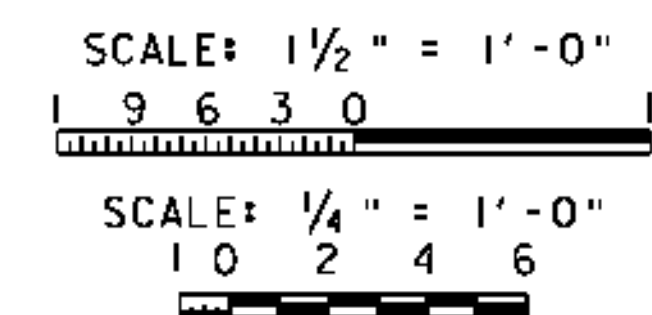
DETAIL "A"
SCALE: 1" = 1'-0"



SECTION A-A
SCALE: 1" = 1'-0"



DETAIL "C"
SCALE: 3/4" = 1'-0"



PROJECT NAME: FAIRFIELD
PROJECT NUMBER: BHO 1448(32)

FILE NAME: Z04J144sup5.dgn
PROJECT LEADER: J.H.WEAVER
DESIGNED BY: J.BICJA
UPPER LATERAL BRACING

PLOT DATE: 4/25/2008
DRAWN BY: J.B.McQUAID
CHECKED BY: S.T.JAMES
SHEET 31 OF 36

Hoyle, Tanner & Associates, Inc.