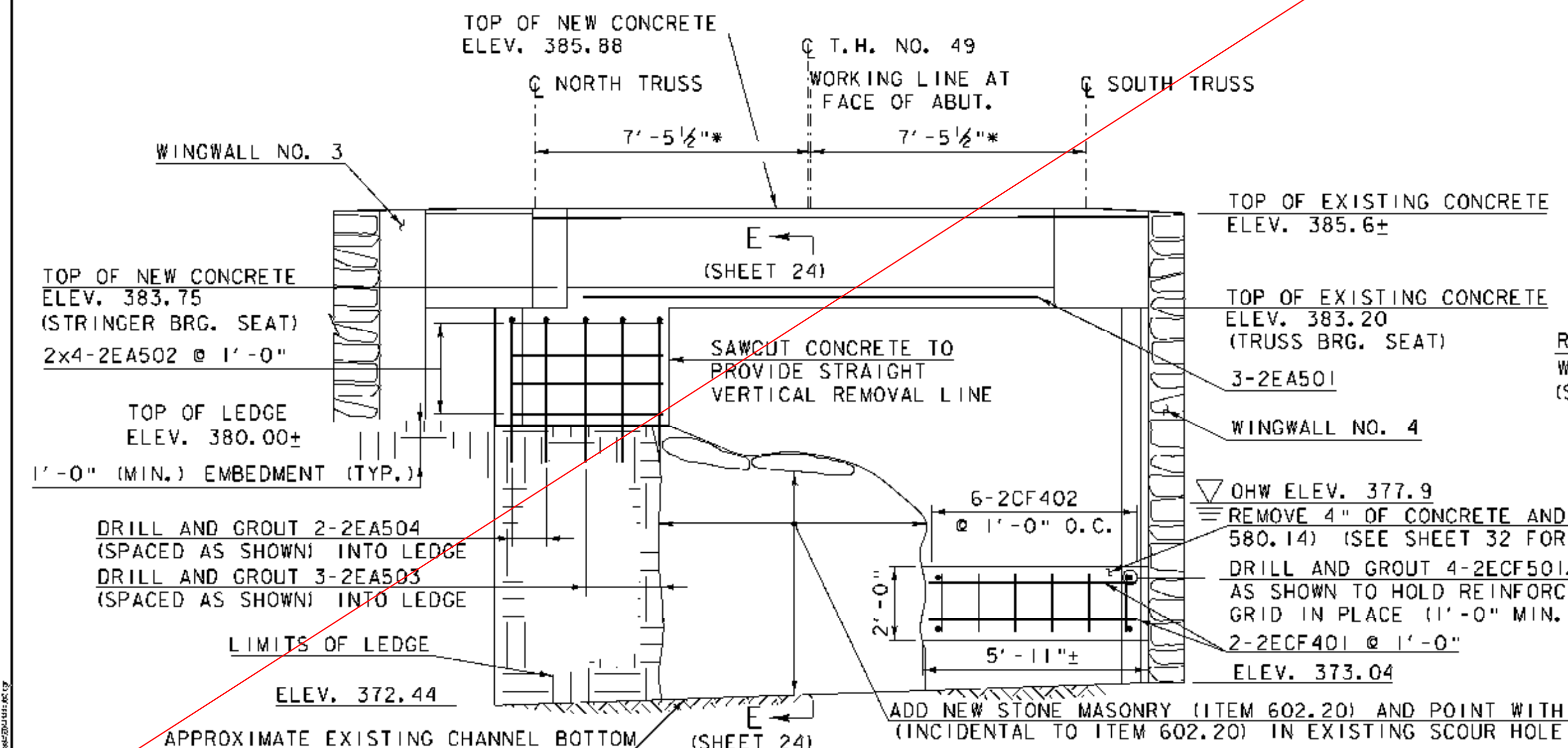
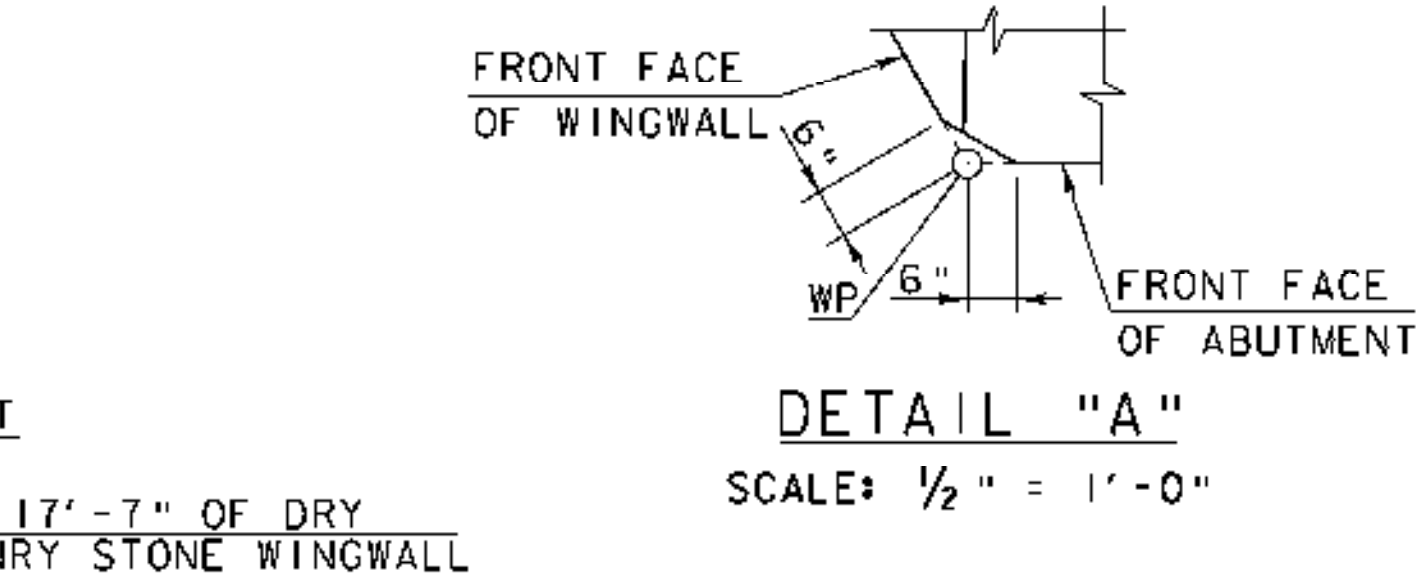


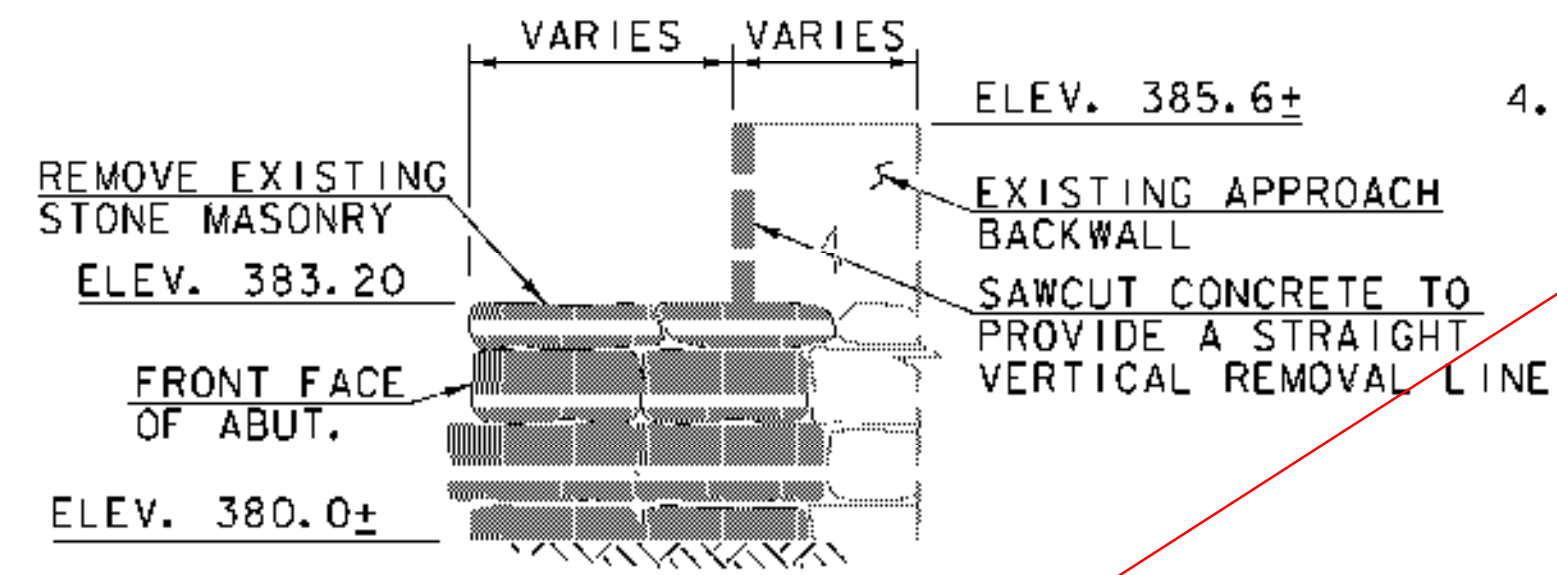
ABUTMENT NO. 2 PLAN
SCALE: 3/8" = 1'-0"



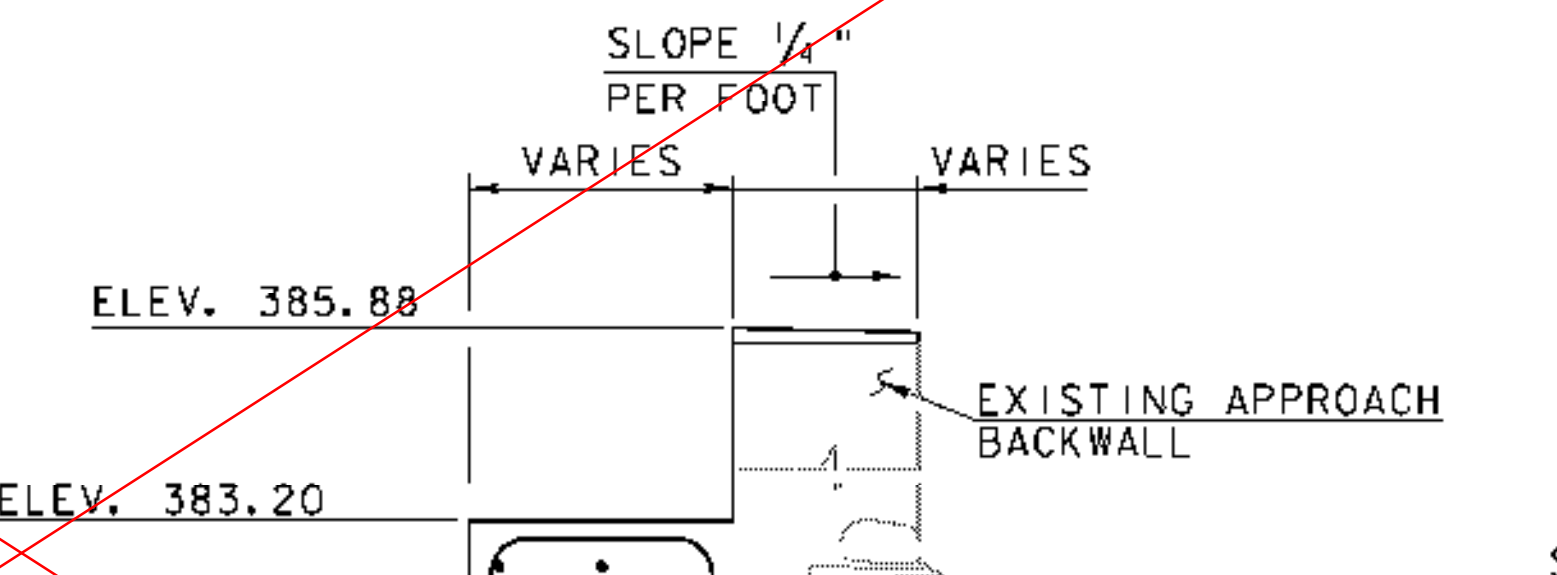
ABUTMENT NO. 2 ELEVATION
SCALE: 3/8" = 1'-0"



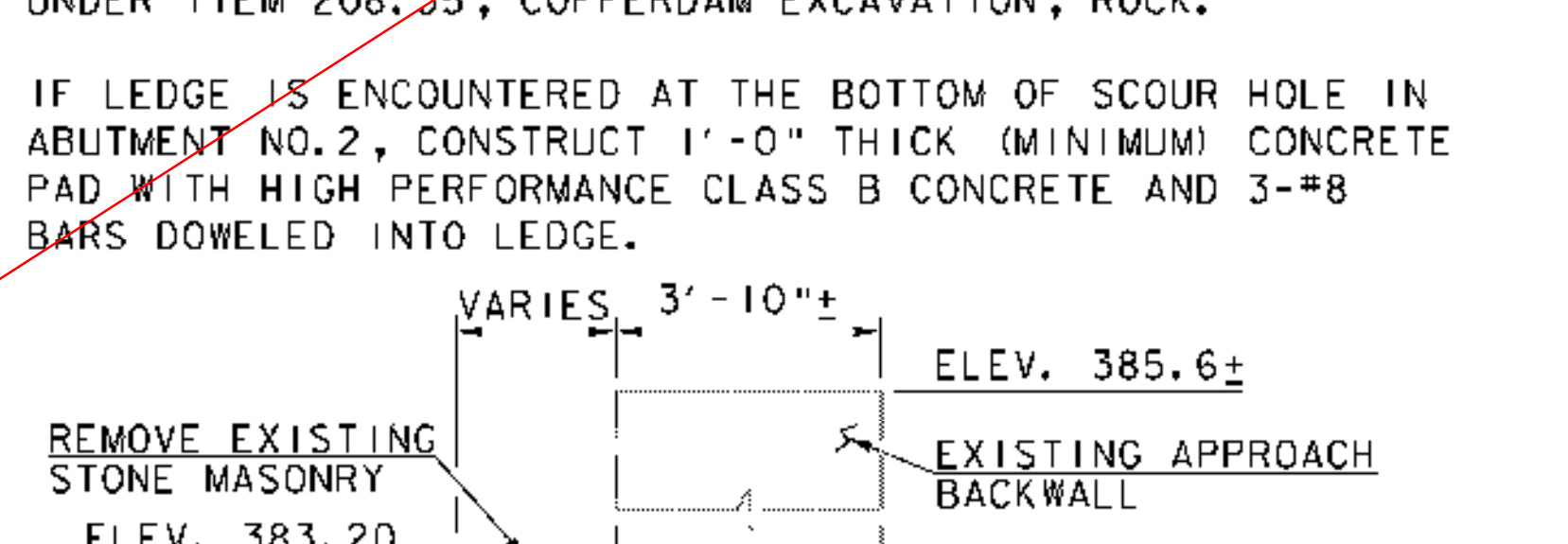
DETAIL "A"
SCALE: 1/2" = 1'-0"



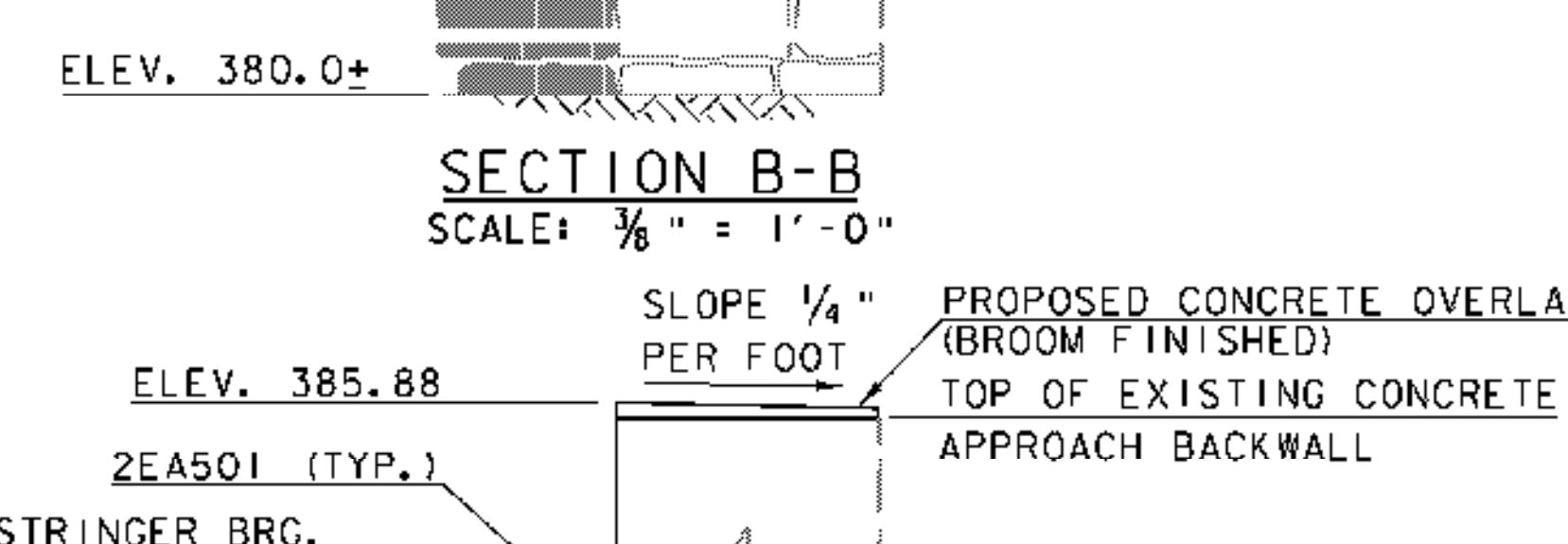
SECTION A-A
SCALE: 3/8" = 1'-0"



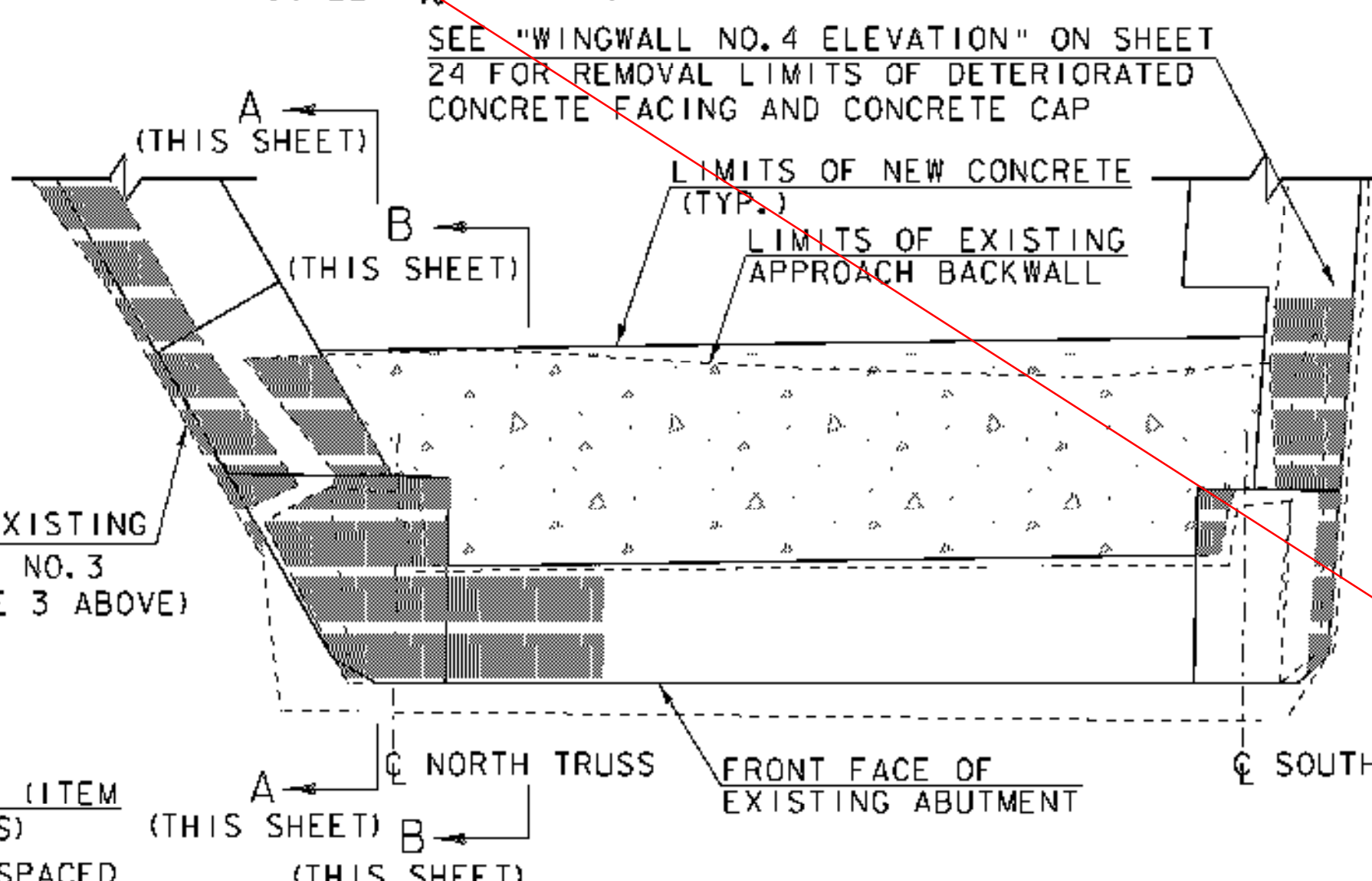
SECTION C-C
SCALE: 3/8" = 1'-0"



SECTION B-B
SCALE: 3/8" = 1'-0"

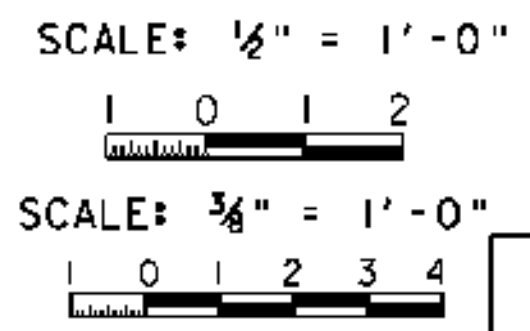


SECTION D-D
SCALE: 3/8" = 1'-0"



ABUTMENT NO. 2 REMOVAL PLAN
SCALE: 3/8" = 1'-0"

- LEGEND:**
- LIMITS OF NEW CONCRETE APPROACH BACKWALL
 - LIMITS OF EXISTING CONCRETE/MASONRY REMOVAL
 - WP WORKING POINT
 - * DIMENSIONS ARE GIVEN PERPENDICULAR TO WORKING LINE
 - ** WORKING LINE IS AN EXTENSION OF THE ROADWAY TANGENT THAT RUNS FROM STA. 101+66.01 TO STA. 102+12.84
 - ▲ REINFORCING TO BE CUT IN THE FIELD



PROJECT NAME:	FAIRFIELD	FILE NAME:	Z04J144sub2.dgn	PLOT DATE:	4/25/2008
PROJECT NUMBER:	BHO 1448(32)	PROJECT LEADER:	J.H.WEAVER	DRAWN BY:	J.B.McQUAID
		DESIGNED BY:	J.BICJA	CHECKED BY:	S.T.JAMES
		ABUTMENT NO.2 PLAN AND ELEVATION		SHEET	23 OF 36

SEE REVISED SHEET 23R

Hoyle, Tanner & Associates, Inc.