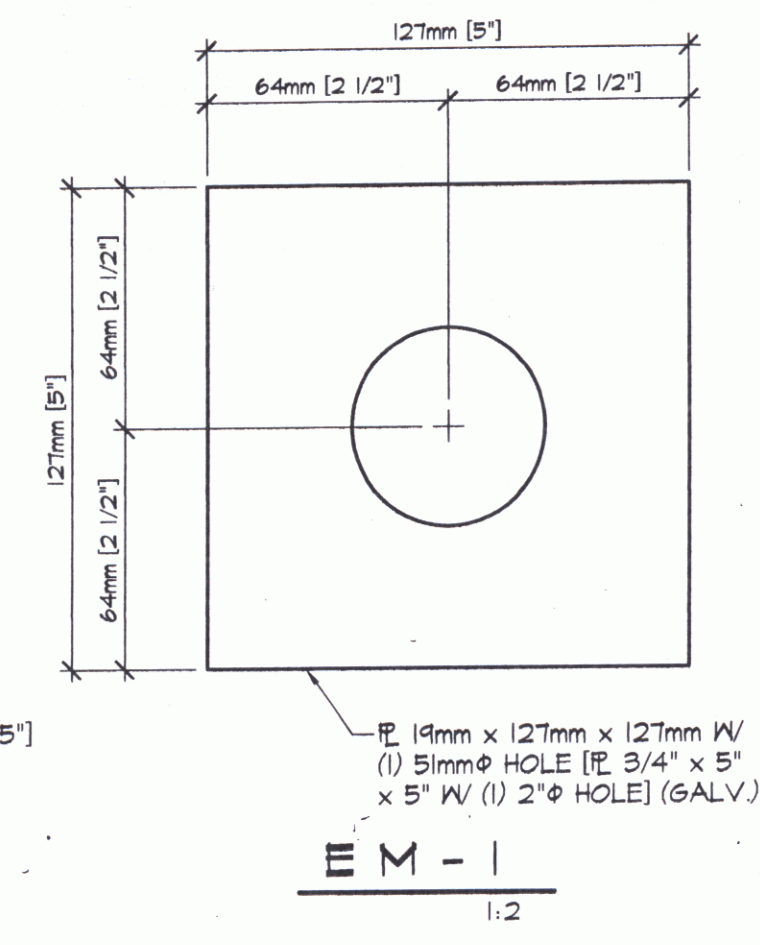
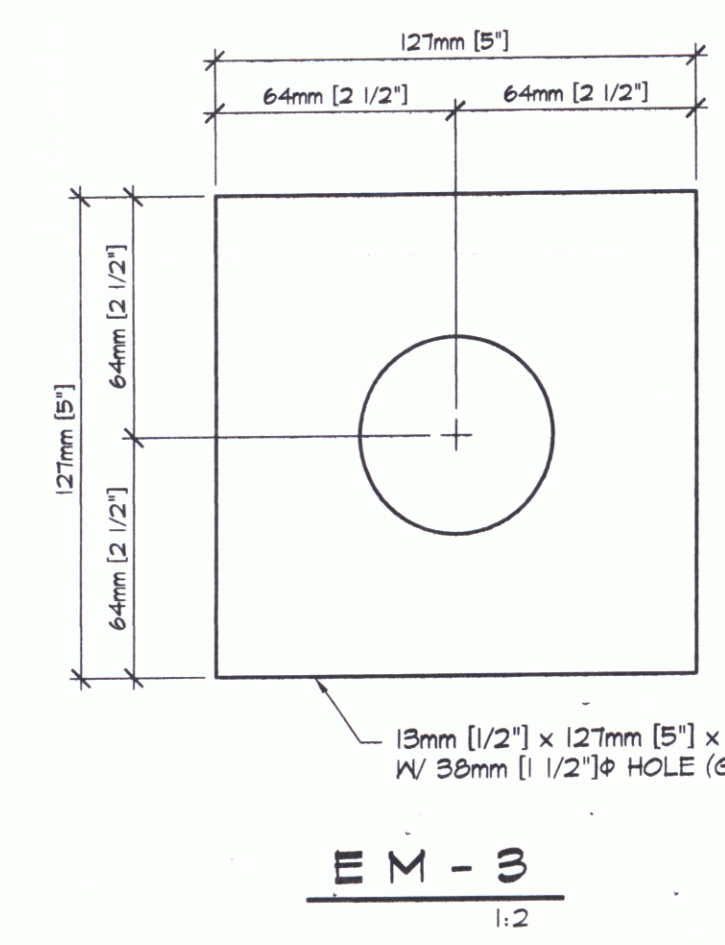
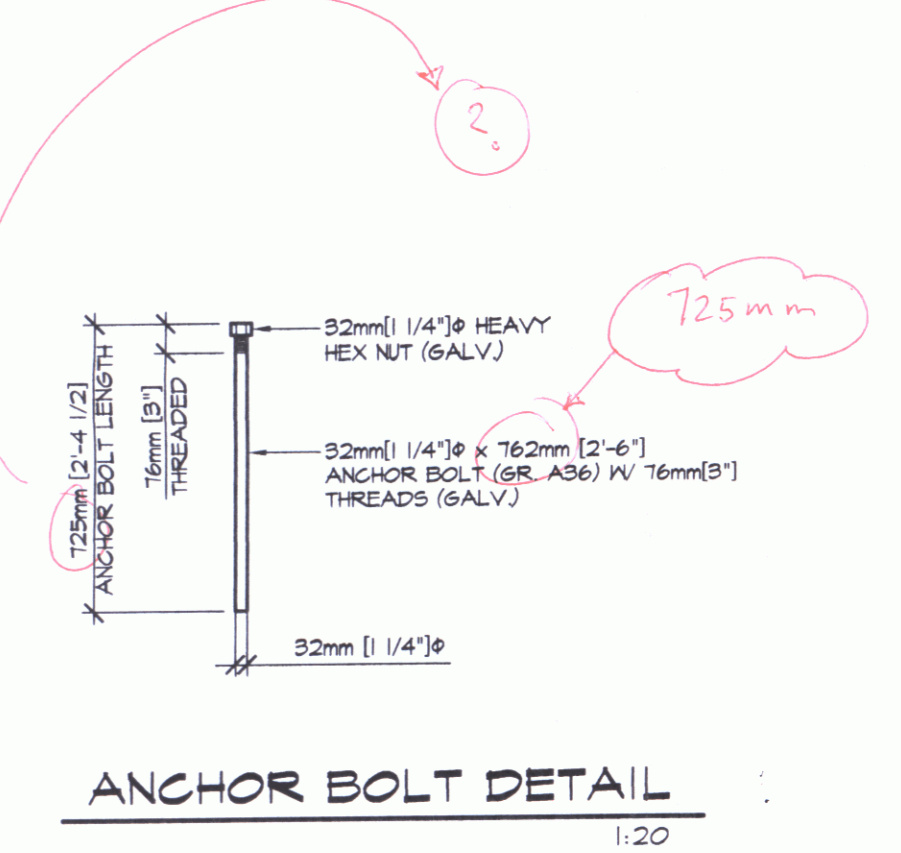
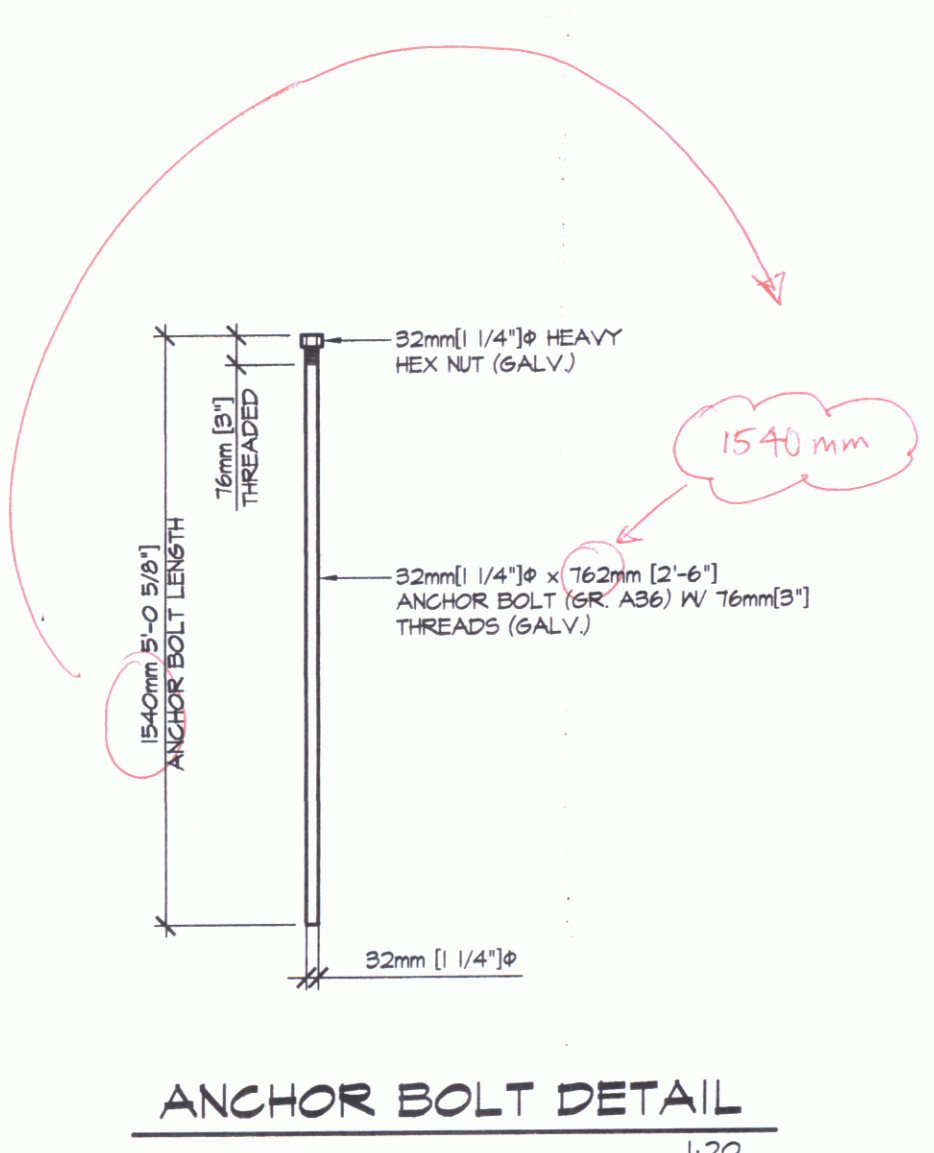
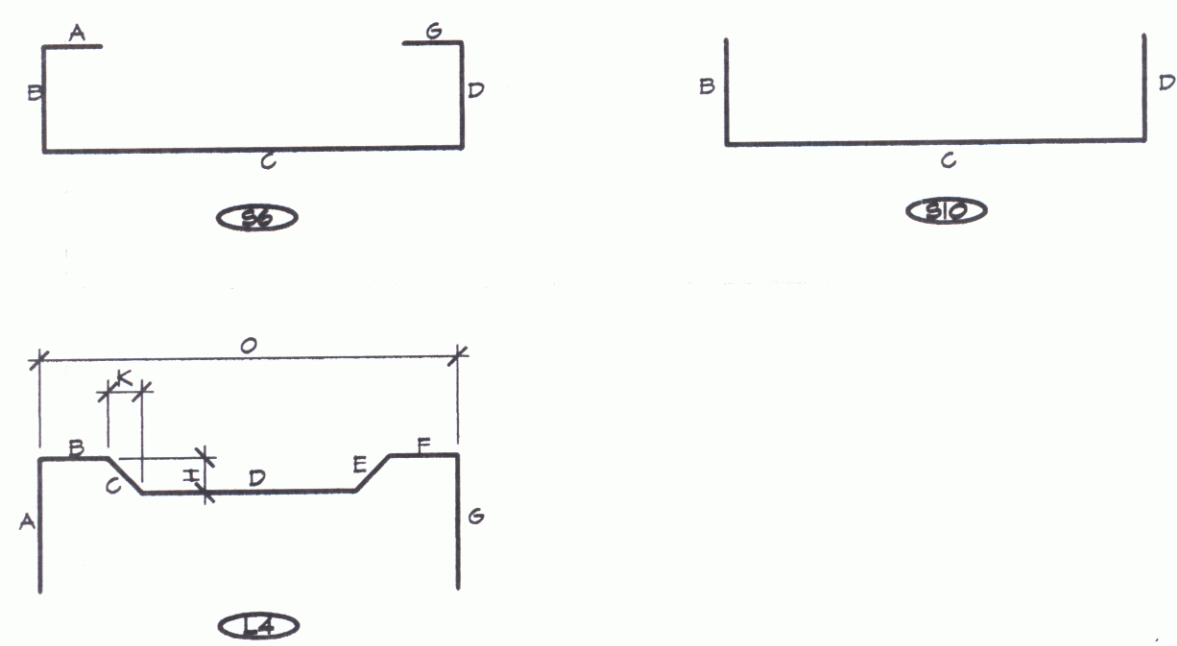


BENT BARS, TIES, & STIRRUPS																		
ITEM	MARK	QTY.	SIZE	LENGTH	TYPE	A	B	C	D	E	F/R	G	H	J	K	O	GRADE	REMARKS
1	40E	560	#3 [#4]	2494mm [9'-4 1/2"]	SIO		465mm [3'-2"]	1105mm [3'-7 1/2"]	465mm [3'-2"]								420 [60]	EPOXY COATED
2	402E	560	#3 [#4]	1664mm [5'-5 1/2"]	SIO		305mm [1'-0"]	1105mm [3'-7 1/2"]	305mm [1'-0"]								420 [60]	EPOXY COATED
3	403E	500	#3 [#4]	1842mm [6'-0 1/2"]	L4	380mm [1'-3"]	260mm [10 1/4"]	212mm [8 3/8"]	285mm [11 3/16"]	212mm [8 3/8"]	260mm [10 1/4"]	380mm [1'-3"]	150mm [5 7/8"]			1105mm [3'-7 1/2"]	420 [60]	EPOXY COATED
4	404E	560	#3 [#4]	1245mm [4'-1"]	SIO		305mm [1'-0"]	965mm [3'-2"]									420 [60]	EPOXY COATED
5	405E	1440	#3 [#4]	2045mm [6'-4 1/2"]	S6	152mm [6"]	318mm [11'-0 1/2"]	1105mm [3'-7 1/2"]	318mm [11'-0 1/2"]				152mm [6"]				420 [60]	EPOXY COATED
6	406E	360	#3 [#4]	1245mm [4'-3"]	S6	152mm [6"]	318mm [11'-0 1/2"]	457mm [1'-6"]	318mm [11'-0 1/2"]				152mm [6"]				420 [60]	EPOXY COATED
7	407E	1080	#3 [#4]	1067mm [3'-6"]	S6	152mm [6"]	203mm [8"]	457mm [1'-6"]	203mm [8"]				152mm [6"]				420 [60]	EPOXY COATED
8	408E	880	#3 [#4]	3010mm [9'-10 1/2"]	SIO		465mm [3'-2"]	1130mm [3'-8 1/2"]	465mm [3'-2"]								420 [60]	EPOXY COATED
9	409E	880	#3 [#4]	1684mm [5'-6 1/2"]	SIO		305mm [1'-0"]	1130mm [3'-8 1/2"]	305mm [1'-0"]								420 [60]	EPOXY COATED
10	410E	820	#3 [#4]	1867mm [6'-1 1/2"]	L4	380mm [1'-3"]	273mm [10 3/4"]	212mm [8 3/8"]	285mm [11 3/16"]	212mm [8 3/8"]	273mm [10 3/4"]	380mm [1'-3"]	150mm [5 7/8"]			1130mm [3'-8 1/2"]	420 [60]	EPOXY COATED
11		240	#3 [#4]	1105mm [3'-7 1/2"]	STR.												420 [60]	EPOXY COATED
12		80	#3 [#4]	6400mm [22'-7 5/8"]	STR.												420 [60]	EPOXY COATED
13		160	#3 [#4]	1250mm [4'-1 1/4"]	STR.												420 [60]	EPOXY COATED
14		80	#25 [#8]	1105mm [3'-7 1/2"]	STR.												420 [60]	EPOXY COATED
15																		

MISCELLANEOUS MATERIAL				
ITEM	MARK	QTY.	DESCRIPTION	REMARKS
1	MKPS	154	DAYTON C24 TYPE 4-APR PRECAST HALF HANGER	FOR ERECTION (SEE DETAIL, THIS SHEET)
2		20	BOX VOID 447mm [3'-1 1/4"] x 787mm [2'-7"] x 8023mm [26'-3 7/8"]	
3		20	BOX VOID 447mm [3'-1 1/4"] x 787mm [2'-7"] x 14653mm [48'-0 7/8"]	
4		80	19mm [3/4"] x 140mm [5 1/2"] NON-FERROUS VOID DRAINS	
5		560	DOUBLE 13mm [1/2"] STRAND LIFTING LOOPS	
6		160	FOUR 13mm [1/2"] STRAND LIFTING LOOPS	
7	EM-1	60	19mm [3/4"] x 127mm [5"] x 127mm [5"] W/ (1) 51mm [2"] HOLE (GALV.)	FOR ERECTION (SEE DETAIL, THIS SHEET)
8		60	13mm [1/2"] x 13254mm [43'-6"] POLYSTRAND	
9		60	SINGLE USE STRESSING CHUCK	
10	EM-3	160	13mm [1/2"] x 127mm [5"] x 127mm [5"] W/ (1) 38mm [1 1/2"] HOLE (GALV.)	FOR ERECTION (SEE DETAIL, THIS SHEET)
11		160	W/F 102 x 102 - M26 x M26 W/F 4 x 4 - M4 x M4 / 965mm x 1105mm [3'-2" x 3'-7 1/2"]	
12				
13		40	THREADED ROD 32mm [1 1/4"] x 1540mm [5'-0 5/8"] (HOT DIPPED GALV.) (A36)	FOR ERECTION (SEE DETAIL, THIS SHEET)
14		120	THREADED ROD 32mm [1 1/4"] x 725mm [2'-4 1/2"] (HOT DIPPED GALV.) (A36)	FOR ERECTION (SEE DETAIL, THIS SHEET)
15		160	32mm [1 1/4"] NUT (GALV.)	FOR ERECTION (SEE DETAIL, THIS SHEET)
16		160	STANDARD WASHER (GALV.)	FOR ERECTION (SEE DETAIL, THIS SHEET)
17				
18				
19				
20				
21				
22				
23				
24				
25				
26				
27				
28				
29				
30				



SHOP DRAWING REVIEW

APPROVAL STAMP

REVIEWED AS REQUIRED BY THE CONSTRUCTION CONTRACT DOCUMENTS AND APPROVED, BUT ONLY FOR CONFORMANCE TO THE DESIGN CONCEPT OF THE WORK, AND SUBJECT TO FURTHER LIMITATIONS AND REQUIREMENTS CONTAINED IN THE CONSTRUCTION CONTRACT DOCUMENTS.

REJECTED REVISE AND RESUBMIT FURNISH AS CORRECTED

CORRECTIONS OR COMMENTS MADE ON THE SHOP DRAWINGS DURING THIS REVIEW DO NOT RELIEVE THE CONTRACTOR FROM COMPLIANCE WITH REQUIREMENTS OF THE DRAWINGS AND SPECIFICATIONS. THIS CHECK IS ONLY FOR REVIEW OF GENERAL CONFORMANCE WITH THE DESIGN CONCEPT OF THE PROJECT AND GENERAL COMPLIANCE WITH THE INFORMATION GIVEN IN THE CONTRACT DOCUMENTS. THE CONTRACTOR IS RESPONSIBLE FOR CONFIRMING AND CORRECTING ALL QUANTITIES AND DIMENSIONS, SELECTING FABRICATION PROCESSES AND TECHNIQUES OF CONSTRUCTION, COORDINATING HIS WORK WITH THAT OF ALL OTHER TRADES, AND PERFORMING HIS WORK IN A SAFE AND SATISFACTORY MANNER.

VHB Vanasse Hangen Brustlin, Inc.
Engineers, Planners, and Scientists
Six Bedford Farms, Nelson Rd.
Bedford, NH 03110 603.844.0888

Job Number: 52735-60
Reviewed By: LSE/ALAC
Date: 2/4/10

J.P. CARRARA & SONS INC.
Precast & Prestress Manufacturer
244 CASE STR., WOODBURY, NEWHAMP 05753 Phone: (603)388-6361 Fax: (603)388-9010

KUBRICKY CONST. CORP.
CONTRACTOR
GLENS FALLS, NEW YORK

STATE OF VERMONT A.O.T.
COUNTY OF CHITTENDEN

TOWN OF COLCHESTER - SOUTH BURLINGTON
PROJECT: LIME KILN BRIDGE
TH 4/3 (URBAN MINOR ARTERIAL), BRIDGE NO.6

MATERIALS LIST

DATE: NOV. 14, 2005
SCALE: NOTED
CHKD: - DFTM:T.J.D.
JOB NO: 23224-05
DWG. NO: M1