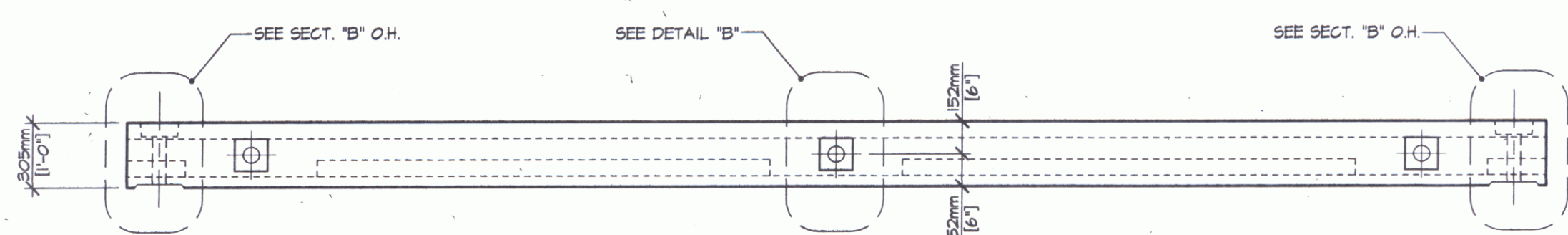
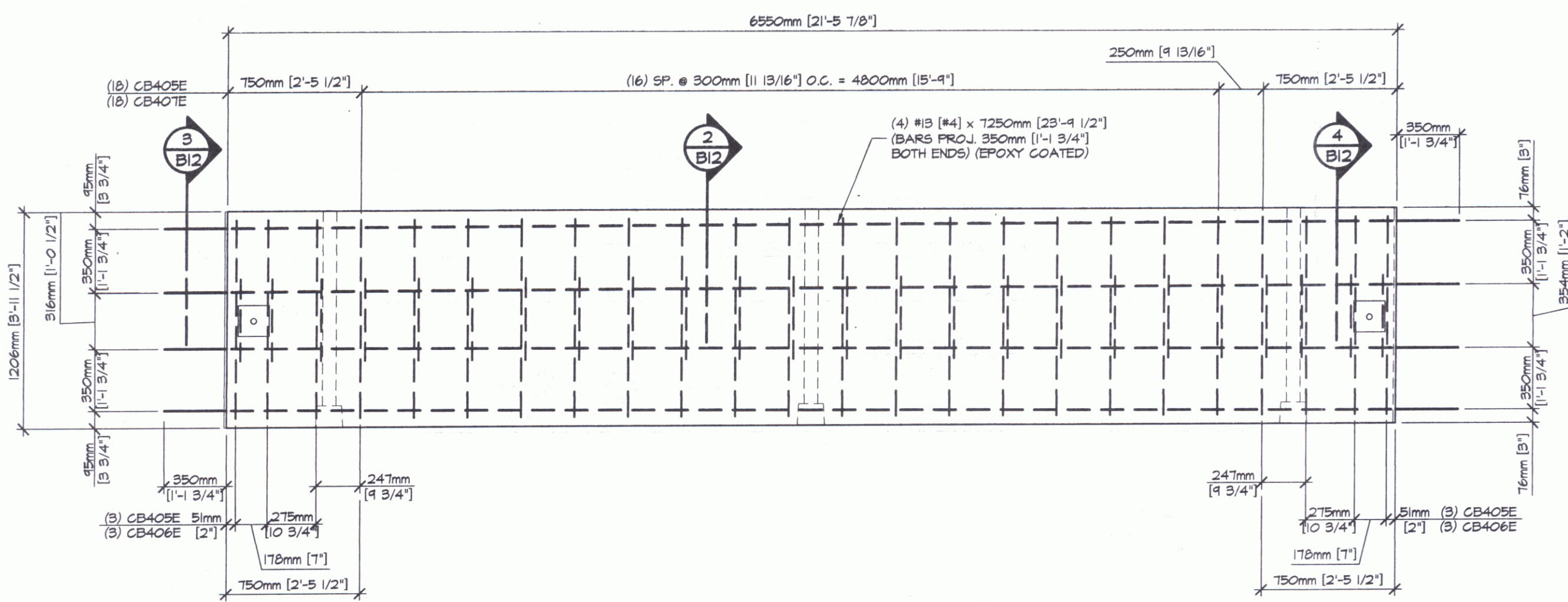


A DIMENSIONAL PLAN VIEW IN FORM
B12 1:25

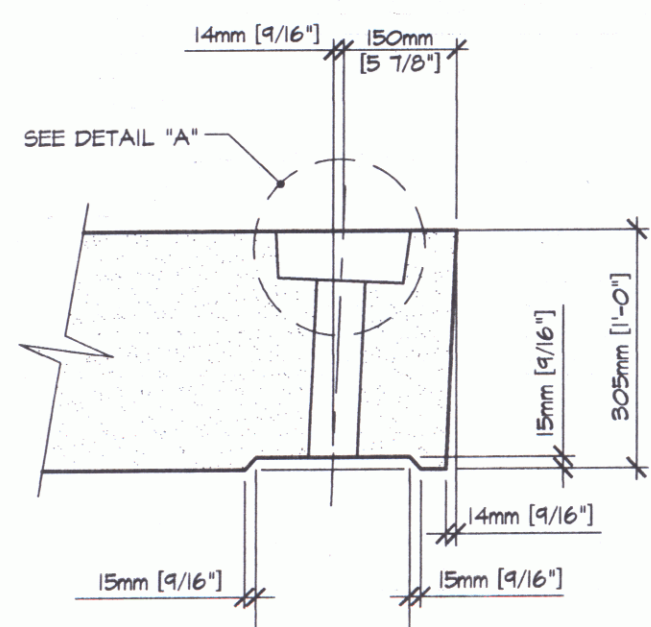


B DIMENSIONAL ELEVATION VIEW IN FORM
B12 1:25

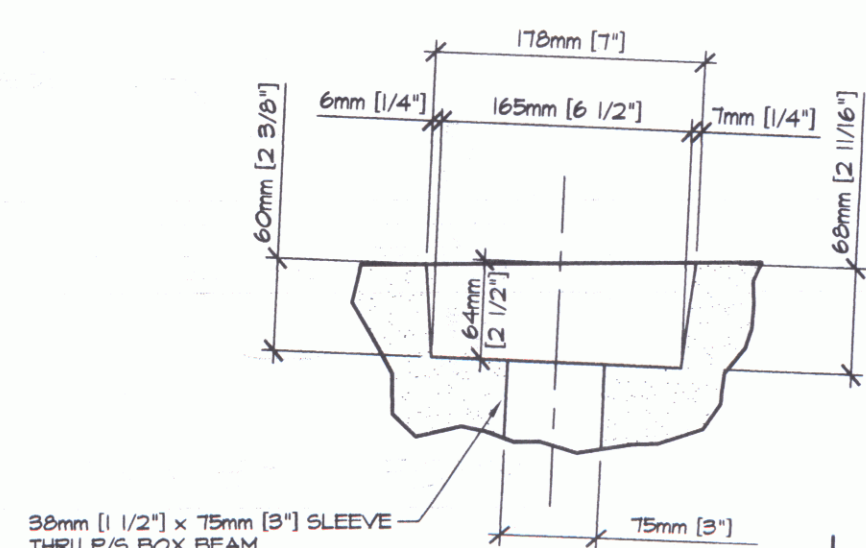


B REINFORCING PLAN VIEW IN FORM
B12 1:25

SHOP NOTE:
ADJUST REINFORCING AS REQUIRED TO CLEAR SLEEVES, POCKETS, ETC.



SECTION - "B"
1:10

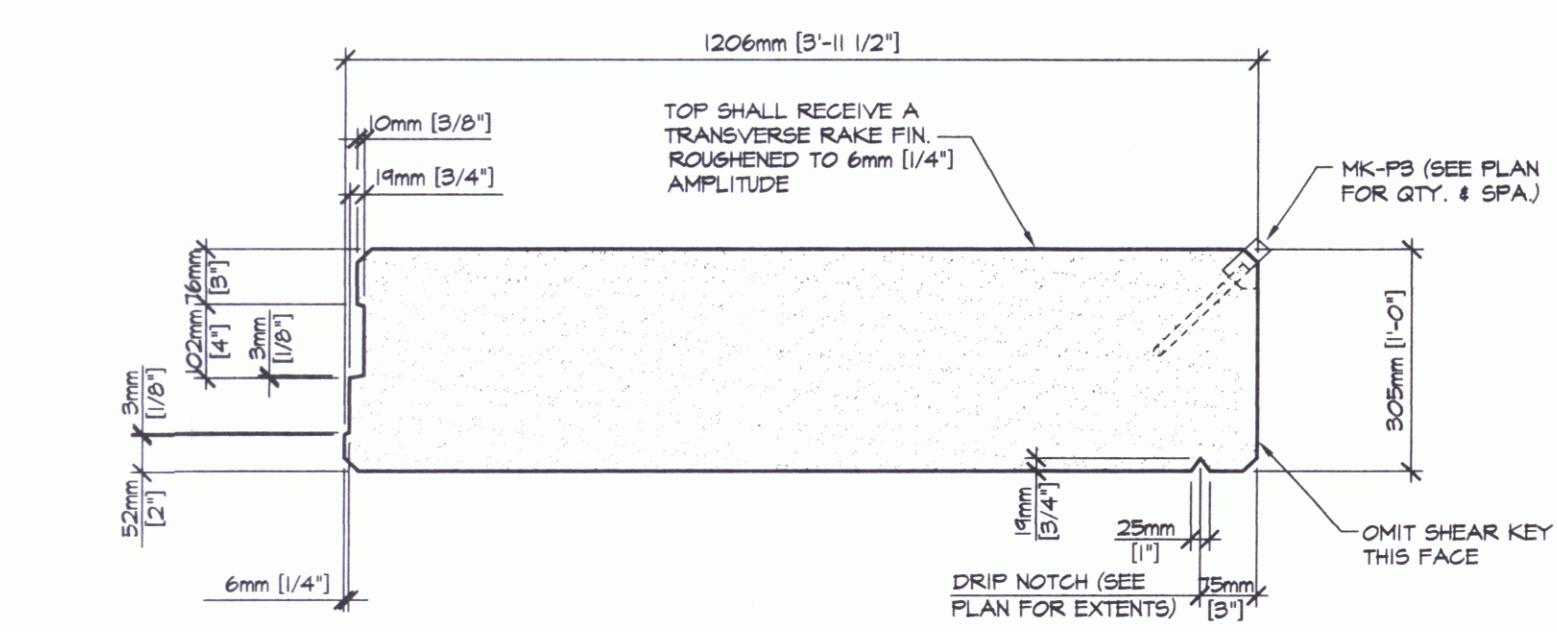


DETAIL - "A"
1:5

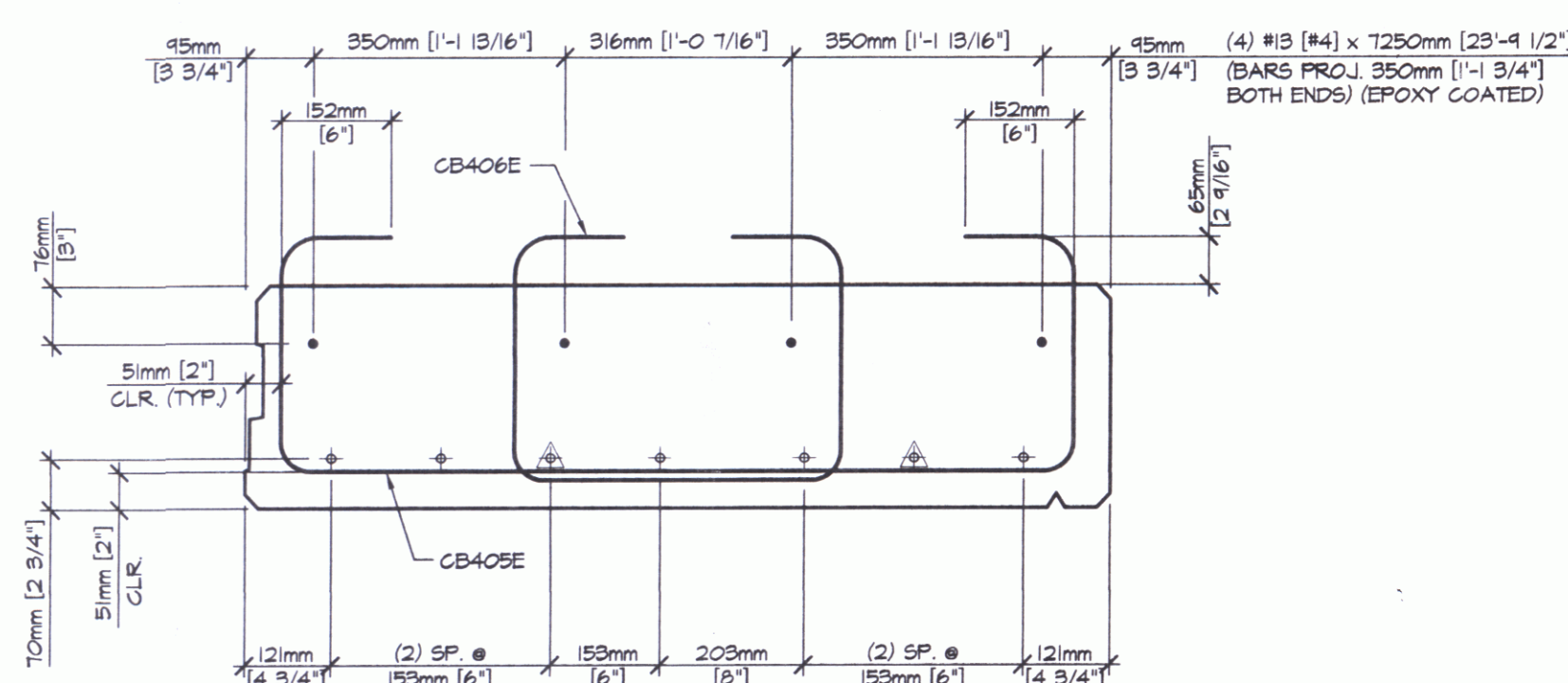
SHOP NOTE: SLEEVE TO BE REMOVED AFTER BEAM IS FABRICATED.

DETENSIONING SCHEDULE
N.T.S.

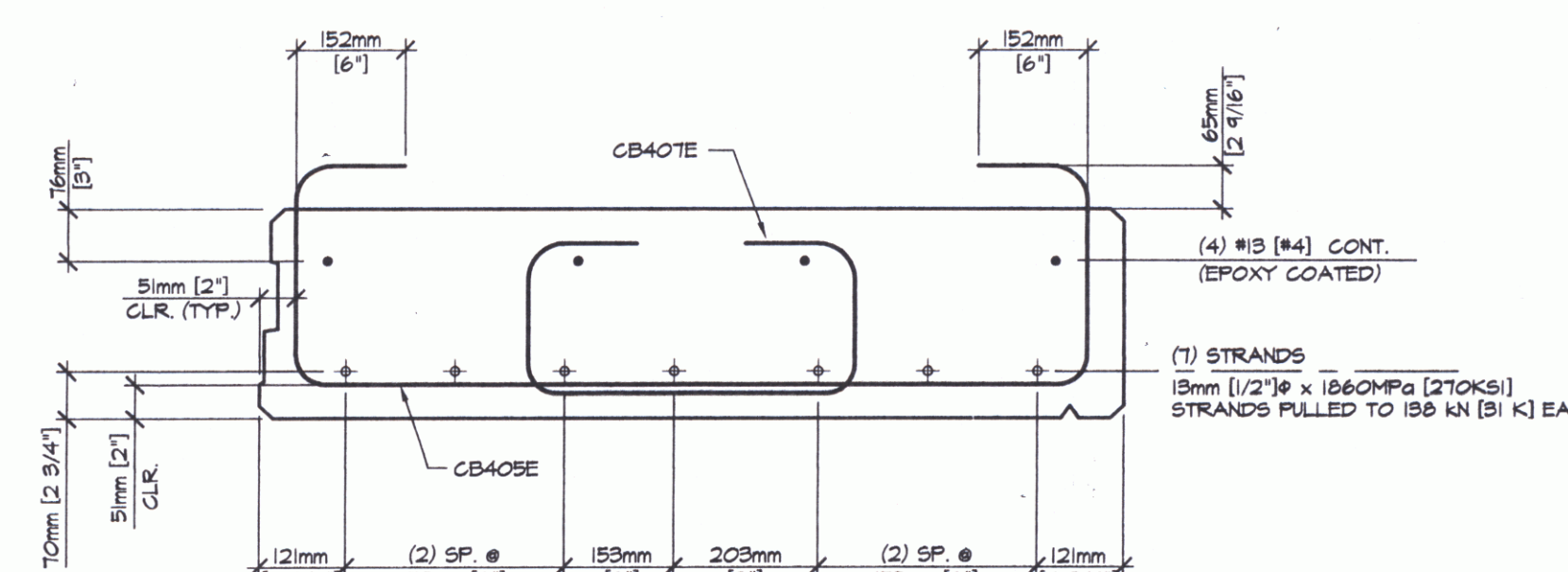
- 1
- 3
- 5
- 7
- 6
- 4
- 2



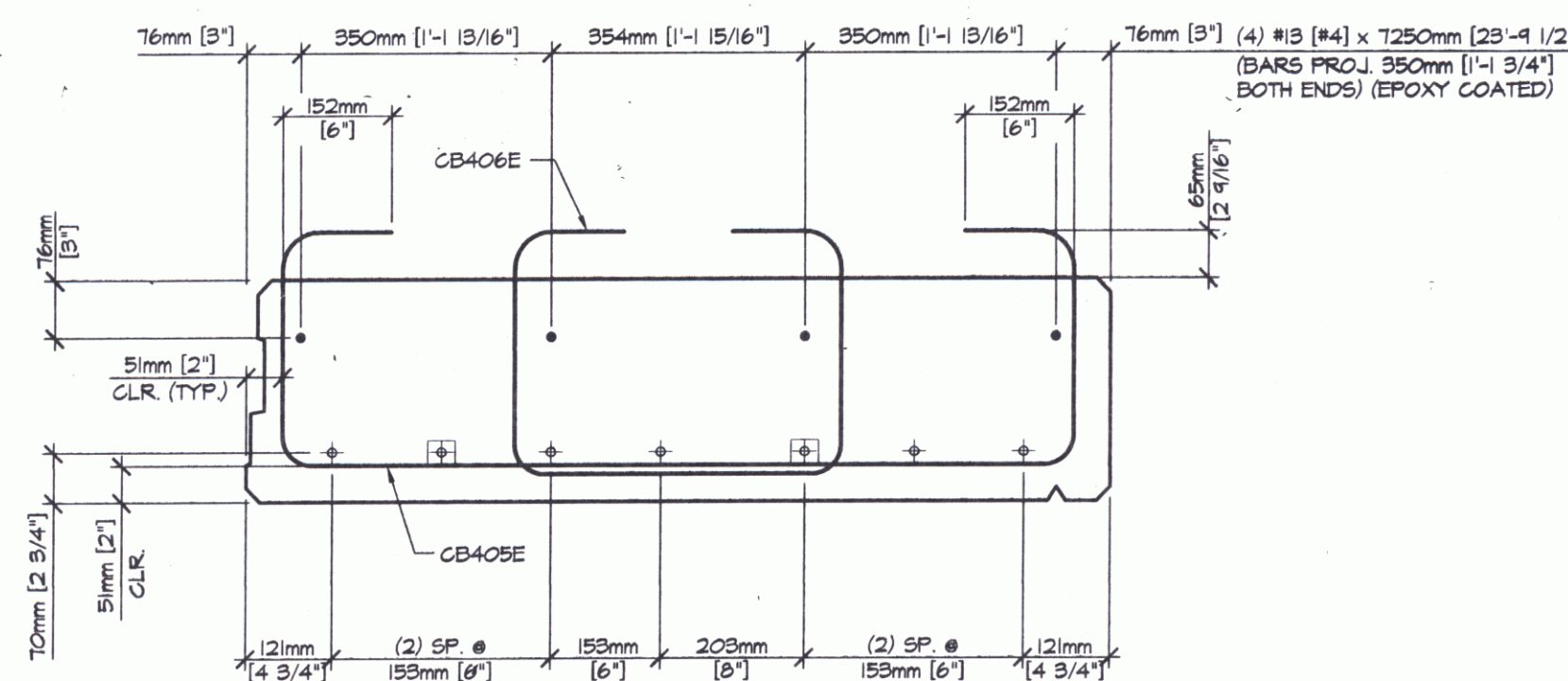
1 DIMENSIONAL SECTION
B12 1:10



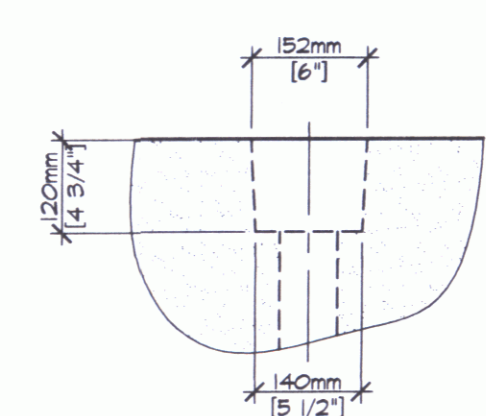
3 END BLOCK SECTION
B12 1:10



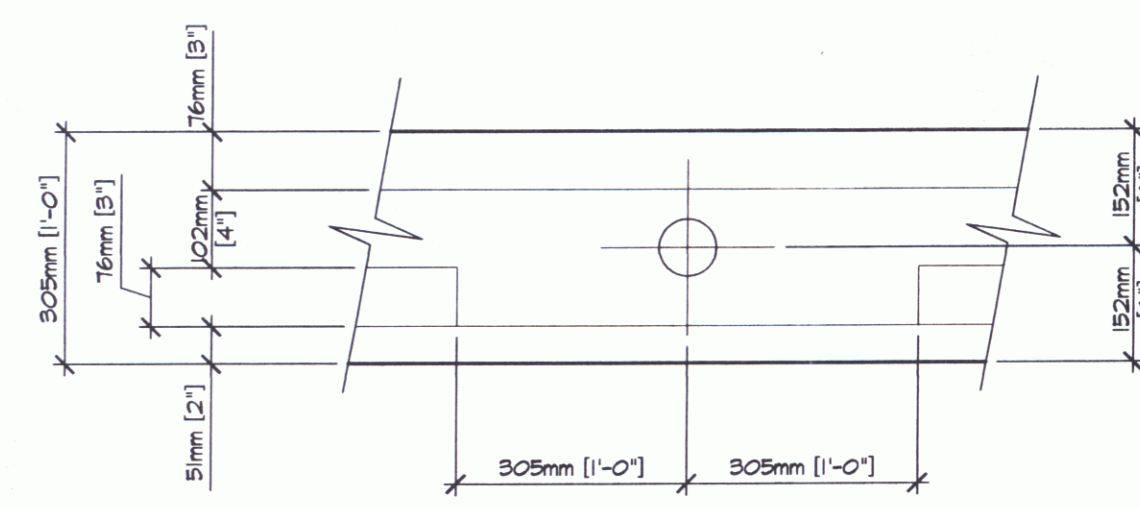
2 END BLOCK SECTION
B12 1:10



4 END BLOCK SECTION
B12 1:10



DETAIL - "C"
1:10



DETAIL - "B"
1:10

SHOP DRAWING REVIEW

REVIEW APPROVAL STAMP CONSTRUCTION CONTRACT DOCUMENTS AND APPROVED, BUT ONLY FOR CONFORMANCE WITH THE DESIGN CONCEPT OF THE WORK, AND SUBJECT TO FURTHER LIMITATIONS AND REQUIREMENTS CONTAINED IN THE CONSTRUCTION CONTRACT DOCUMENTS.

REJECTED REVISE AND RESUBMIT FURNISH AS CORRECTED

CORRECTIONS OR COMMENTS MADE ON THE SHOP DRAWINGS DURING THIS REVIEW DO NOT RELIEVE CONTRACTOR FROM COMPLIANCE WITH REQUIREMENTS OF THE DRAWINGS AND SPECIFICATIONS. THIS CHECK IS ONLY FOR REVIEW OF GENERAL CONFORMANCE WITH THE DESIGN CONCEPT OF THE PROJECT AND GENERAL COMPLIANCE WITH THE INFORMATION GIVEN IN THE CONTRACT DOCUMENTS. THE CONTRACTOR IS RESPONSIBLE FOR CONFIRMING AND CORRELATING ALL QUANTITIES AND DIMENSIONS; SELECTING FABRICATION PROCESSES AND TECHNIQUES OF CONSTRUCTION; COORDINATING HIS WORK WITH THAT OF ALL OTHER TRADES; AND PERFORMING HIS WORK IN A SAFE AND SATISFACTORY MANNER.

VHB Venasse Hungen Brustlin, Inc.
Engineers, Planners, and Scientists
Six Bedford Farms, Kilton Rd.
Bedford, NH 03110 603 644 0300

Job Number: 52735-68
Reviewed By: L.S.B./J.A.C.
Date: 2/4/06

MARK: CSS6	QTY: 4	WT.: 5,700 kg [6.30 T]	VOL.: 2.41 m ³ [3.4 cu]
------------	--------	------------------------	------------------------------------

MATERIAL LIST / BEAM			
ITEM	MARK	DESCRIPTION	QTY.
1	CB405E	#13 [4] BENT BAR (EPOXY COATED)	24
2	CB406E	#13 [4] BENT BAR (EPOXY COATED)	6
3	CB407E	#13 [4] BENT BAR (EPOXY COATED)	18
4			
5	MK-P3	DAYTON C24 TYPE 4-APR PRECAST HALF HANGER	6
6		#13 [4] x 1250mm [23'-4 1/2"] (EPOXY COATED)	4
7			
8			
9			
10			
11		DOUBLE [3mm [1/2"] STRAND LIFTING LOOPS	4
12			

J.P. CARRARA & SONS INC.
Precast & Prestress Manufacturer
2464 CASE STR., WOODBURY, VERMONT 05733 Phone: (802)388-6361 Fax: (802)388-9010

STATE OF VERMONT A.O.T.
CONTRACTOR
GLENS FALLS, NEW YORK

TOWN OF COLCHESTER - SOUTH BURLINGTON PROJECT: LIME KILN BRIDGE
TH 4/3 (URBAN MINOR ARTERIAL), BRIDGE NO.6

F/S SOLID SLAB DETAILS

DATE: NOV. 14, 2005
SCALE: NOTED
CHKD: - DFTM: T.J.D.
JOB NO: 23224-05
DWG. NO: B12