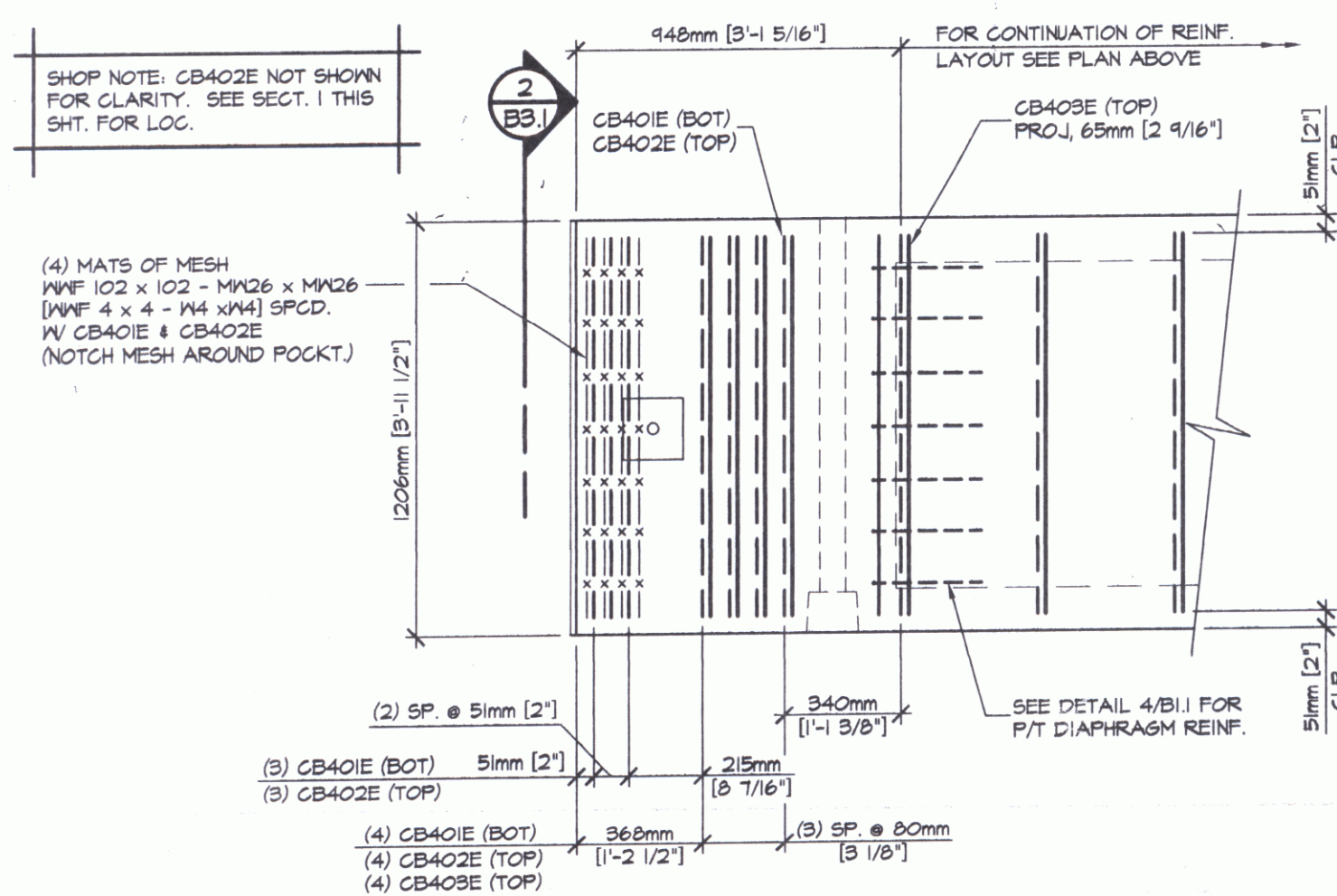
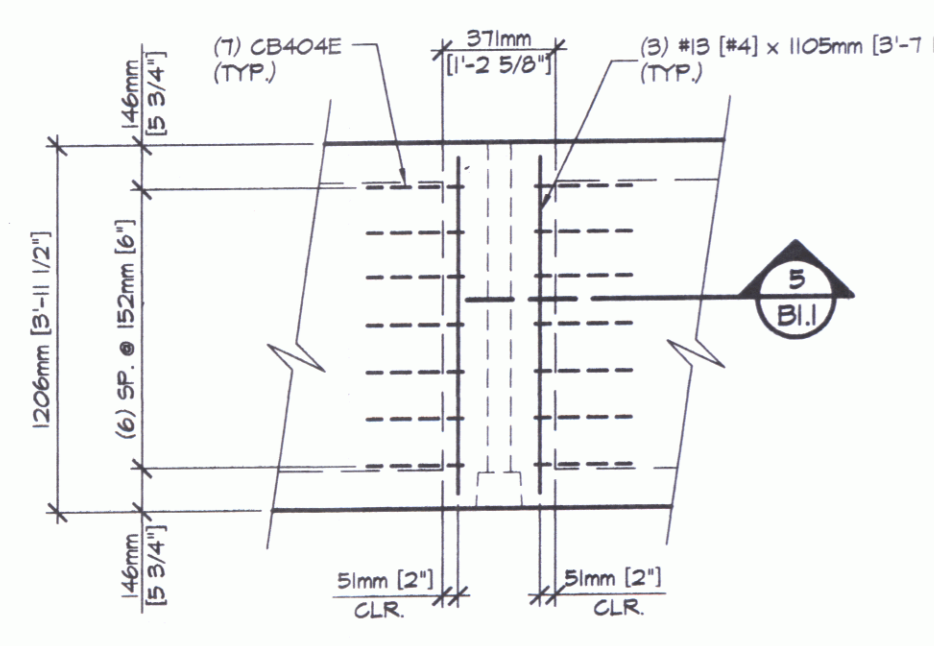


A REINFORCING PLAN VIEW IN FORM
B3.1 1:50

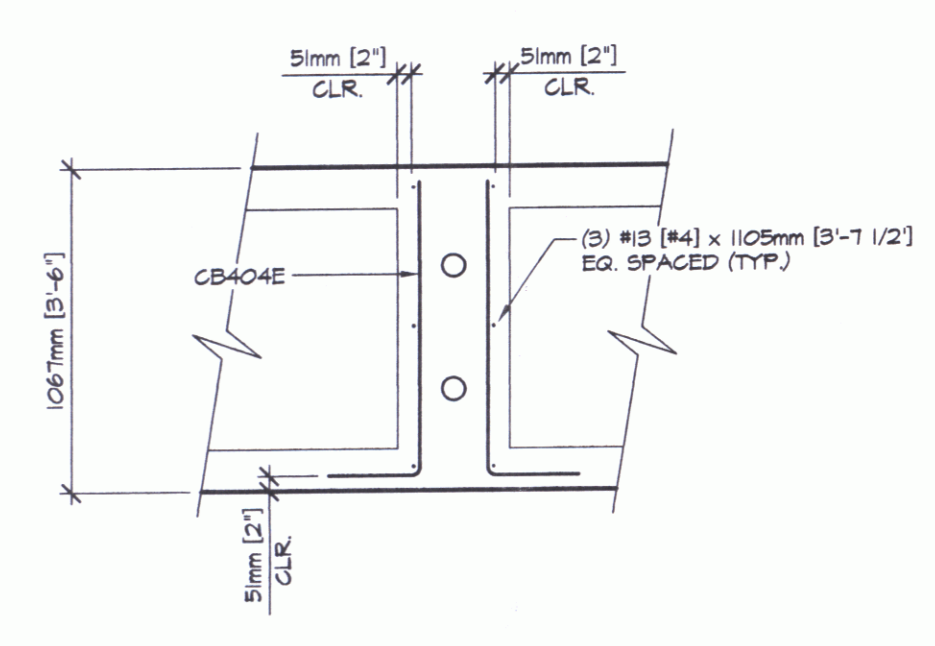
SHOP NOTE:
ADJUST REINFORCING AS REQUIRED
TO CLEAR SLEEVES, POCKETS, ETC.



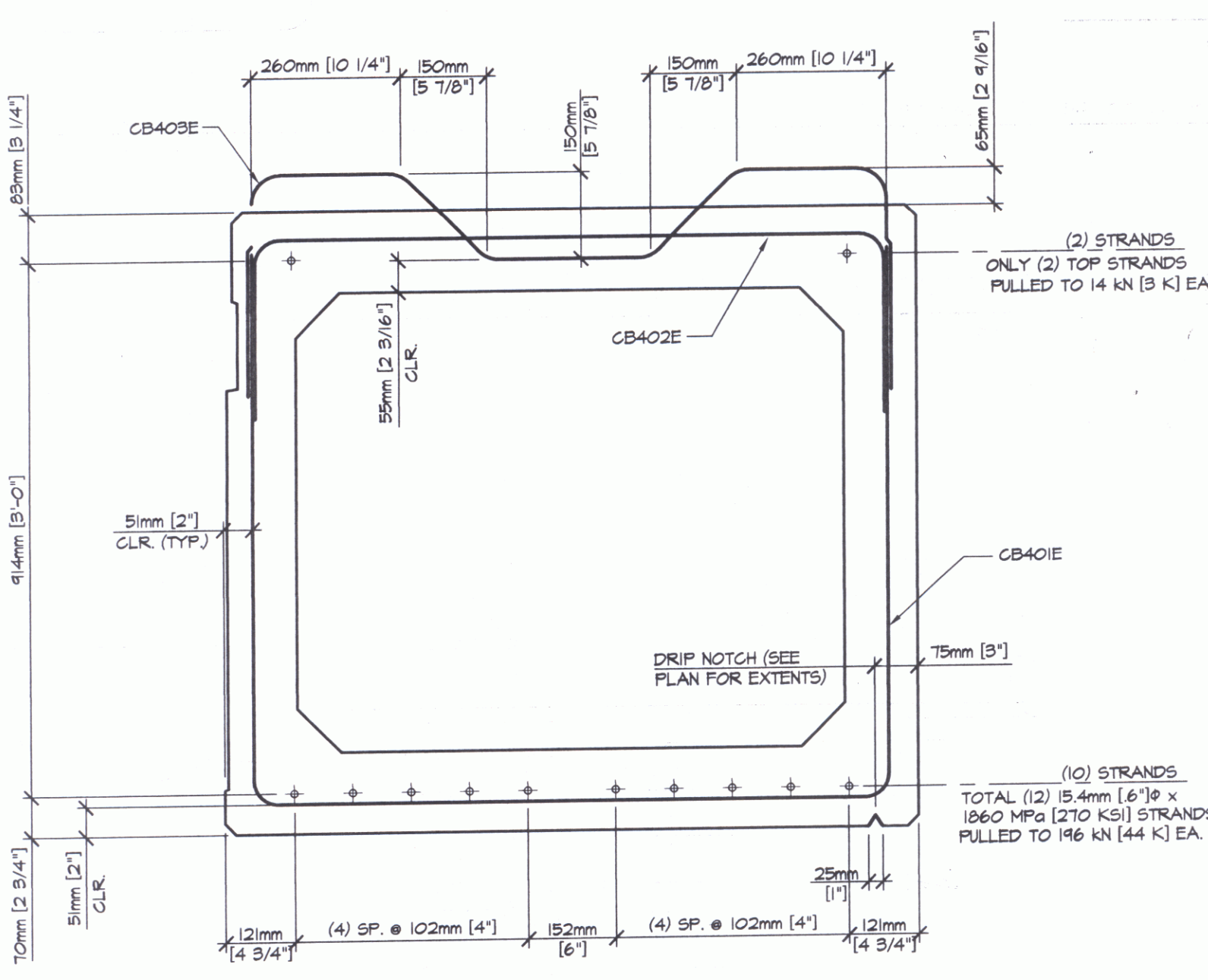
B END BLOCK REINFORCING PLAN
B3.1 1:20



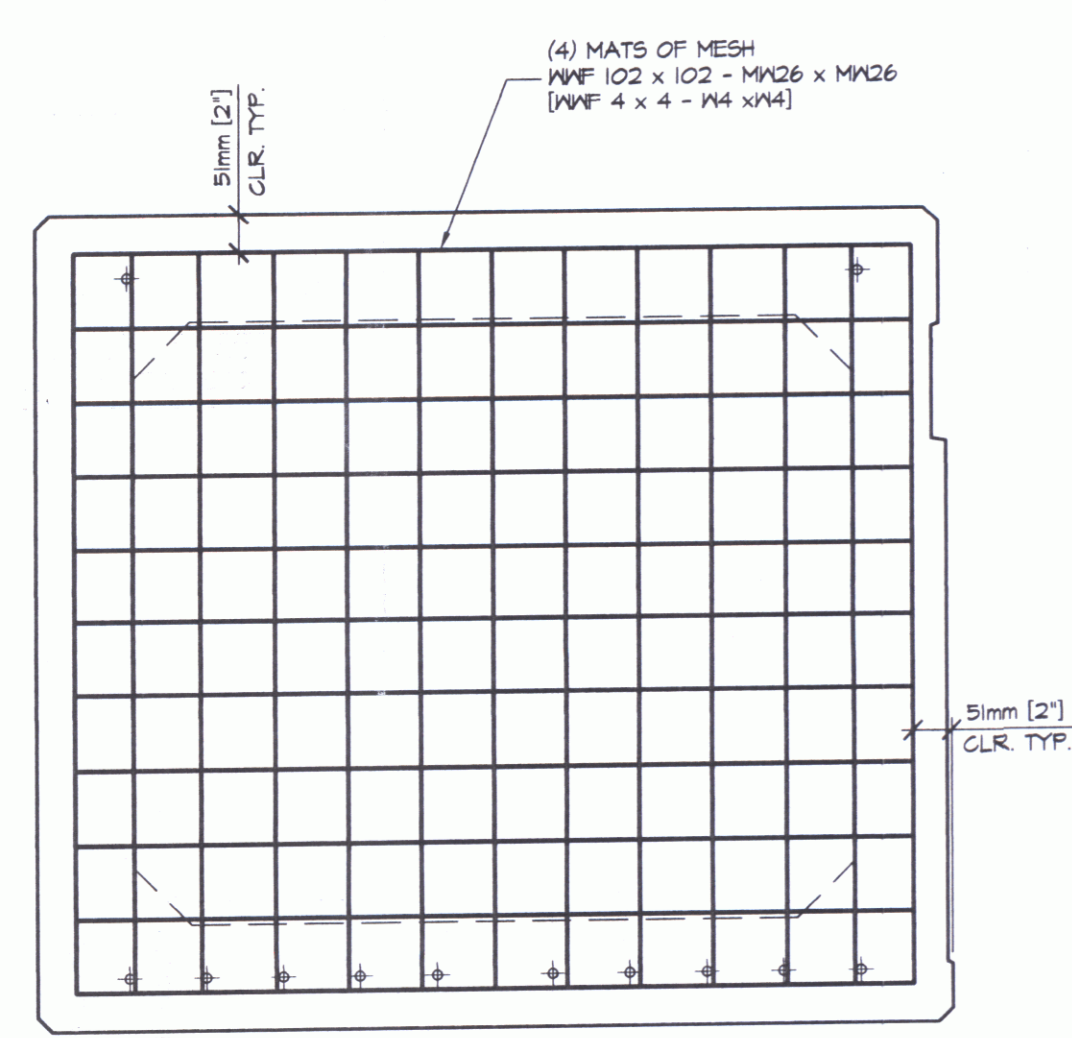
4 DIAPHRAGM REINF.
B3.1 1:25



5 DIAPHRAGM SECTION
B3.1 1:25



1 REINFORCING SECTION
B3.1 1:10



2 END BLOCK SECTION
B3.1 1:10



DETENSIONING SCHEDULE
N.T.S.

SHOP DRAWING REVIEW

REVIEWED AND APPROVED BY THE CONTRACTOR CONTRACT DOCUMENTS AND APPROVED, BUT ONLY FOR GENERAL CONCEPT OF THE WORK, AND SUBJECT TO FURTHER LIMITATIONS AND REQUIREMENTS CONTAINED IN THE CONSTRUCTION CONTRACT DOCUMENTS.

REJECTED REVISE AND RESUBMIT FURNISH AS CORRECTED

CORRECTIONS OR COMMENTS MADE ON THE SHOP DRAWINGS DURING THIS REVIEW DO NOT RELIEVE CONTRACTOR FROM COMPLIANCE WITH REQUIREMENTS OF THE DRAWINGS AND SPECIFICATIONS. THIS CHECK IS ONLY FOR REVIEW OF GENERAL CONFORMANCE WITH THE DESIGN CONCEPT OF THE PROJECT AND GENERAL COMPLIANCE WITH THE INFORMATION GIVEN IN THE CONTRACT DOCUMENTS. THE CONTRACTOR IS RESPONSIBLE FOR CONFIRMING AND CORRELATING ALL QUANTITIES AND DIMENSIONS; SELECTING FABRICATION PROCESSES AND TECHNIQUES OF CONSTRUCTION; COORDINATING HIS WORK WITH THAT OF ALL OTHER TRADES; AND PERFORMING HIS WORK IN A SAFE AND SATISFACTORY MANNER.

Vannessa Hanger Brunell, Inc.
Engineers, Planners, and Scientists
Six Bedford Farms, Kilton Rd.
Bedford, NH 03110 603.644.0988

Job Number: 55735-WU
Reviewed By: LSG/MAC
Date: 2/1/06

MARK: CB3 QTY: 1

MATERIAL LIST / BEAM			
ITEM	MARK	DESCRIPTION	QTY.
1	CB401E	#B (#4) BENT BAR (EPOXY COATED)	56
2	CB402E	#B (#4) BENT BAR (EPOXY COATED)	56
3	CB403E	#B (#4) BENT BAR (EPOXY COATED)	50
4	CB404E	#B (#4) BENT BAR (EPOXY COATED)	28
5			
6		#B (#4) x 1105mm [3'-7 1/2"] (EPOXY COATED)	12
7			
8		SHEET SIZE 965mm [3'-2"] x 1105mm [3'-7 1/2"]	
9		WWF 102 x 102 - M426 x M426 [WWF 4 x 4 - P4 x P4]	8
10			
11			
12			

J.P. CARRARA & SONS INC.
Precast & Prestress Manufacturer
264 GAZE STR., WOODBURY, VERMONT 05753 Phone: (802) 388-6361 Fax: (802) 388-9010

KUBRICKY CONST. CORP.
CONTRACTOR
GLENS FALLS, NEW YORK

STATE OF VERMONT A.O.T.
COUNTY OF CHITTENDEN

TOWN OF COLCHESTER - SOUTH BURLINGTON
PROJECT: LIME KILN BRIDGE
TH 4/3 (URBAN MINOR ARTERIAL), BRIDGE NO. 6

F/S BOX BEAM REINF. DETAILS

DATE: NOV. 14, 2005
SCALE: NOTED
CHKD: - DFTM:T.J.D.
JOB NO: 23224-05
DWG. NO: B3.1