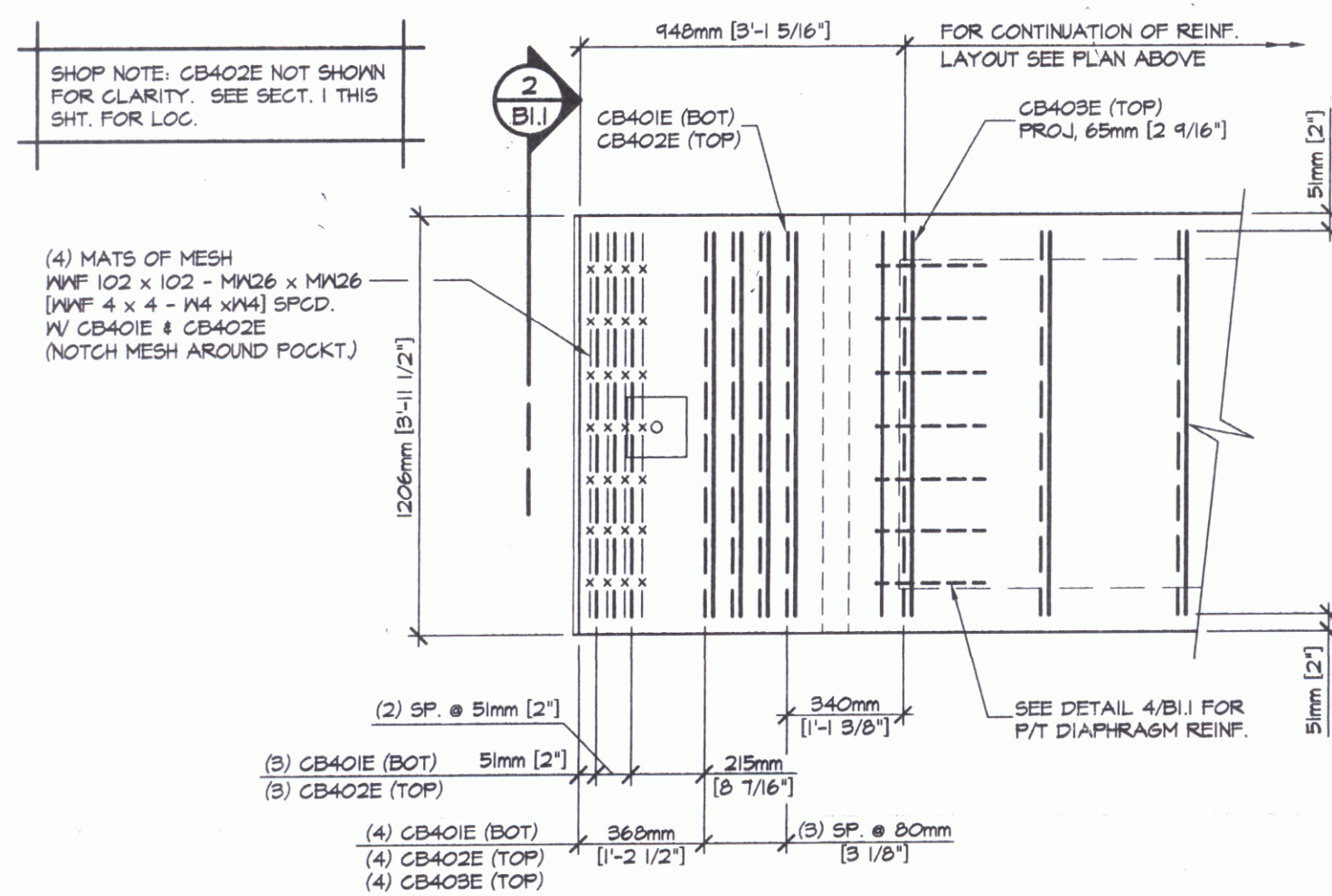
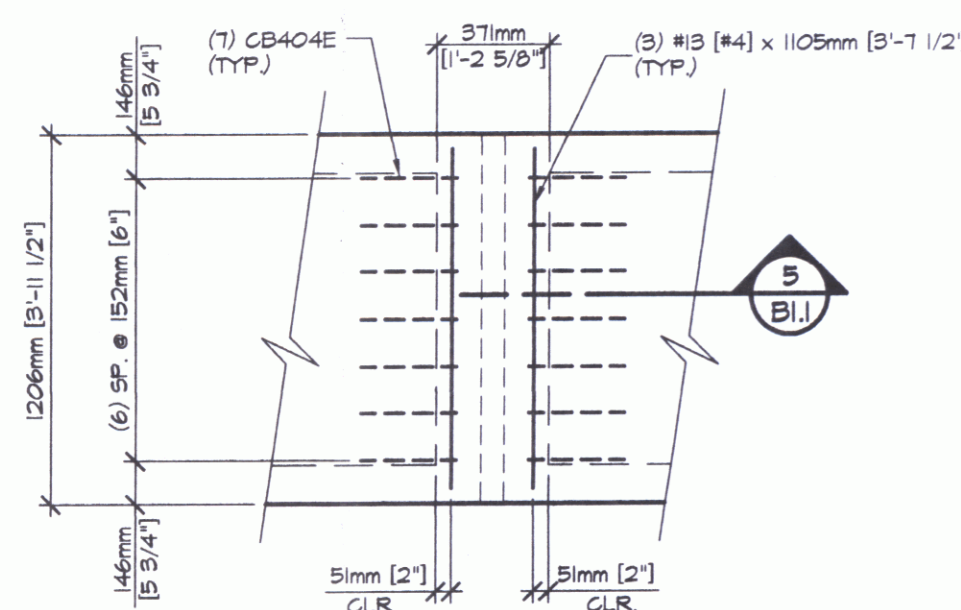


A REINFORCING PLAN VIEW IN FORM
B.I.1 1:50

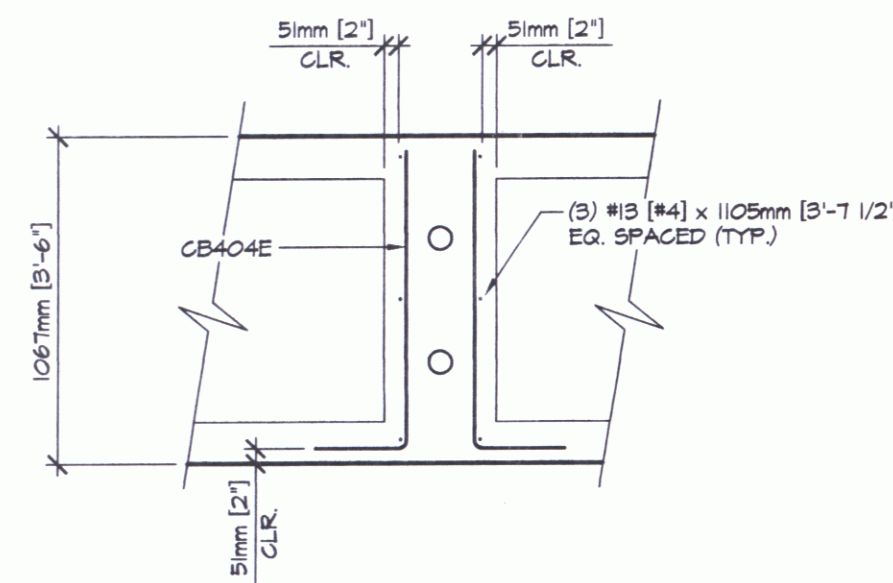
SHOP NOTE:
ADJUST REINFORCING AS REQUIRED
TO CLEAR SLEEVES, POCKETS, ETC.



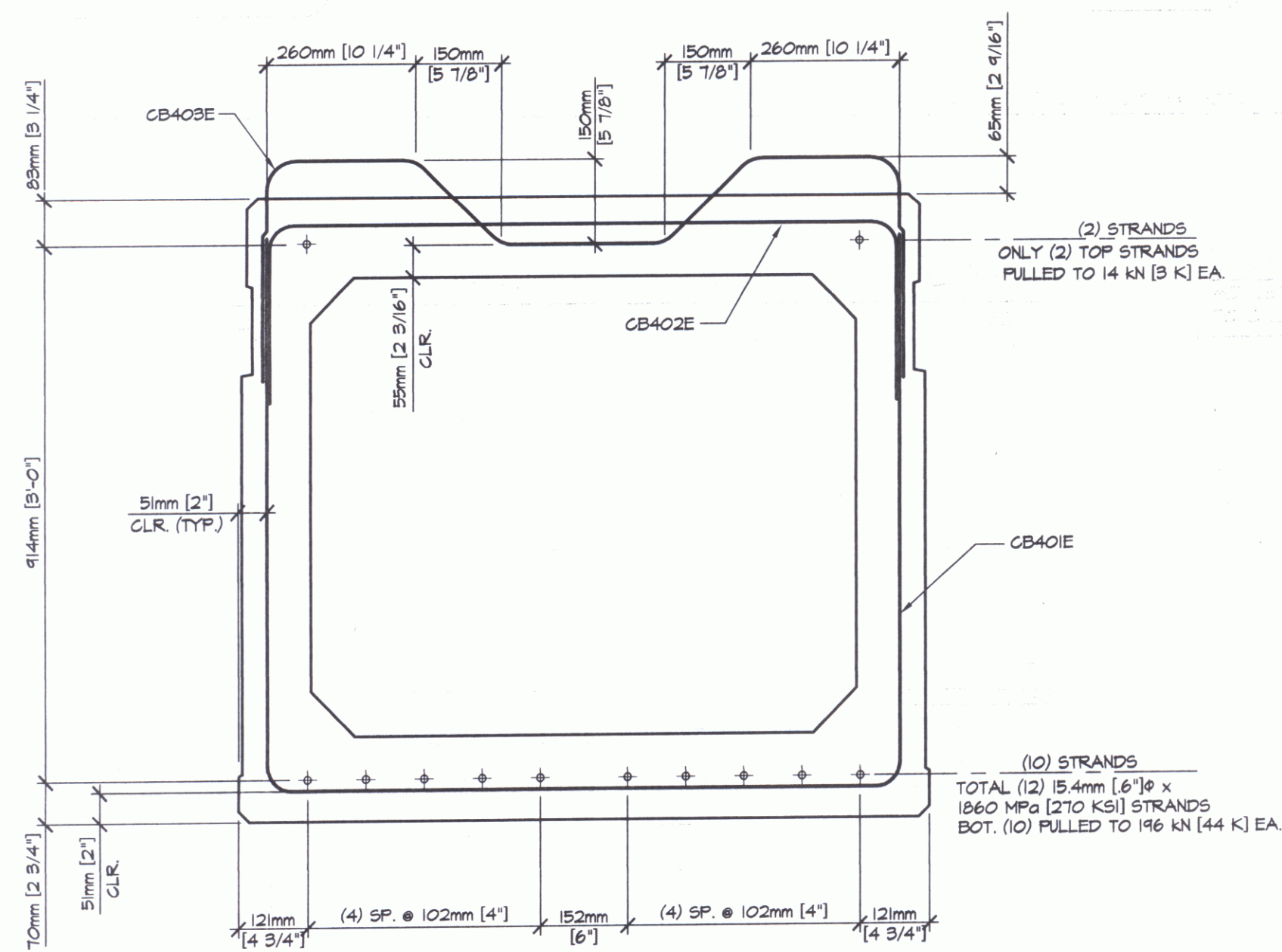
3 END BLOCK REINFORCING PLAN
B.I.1 1:20



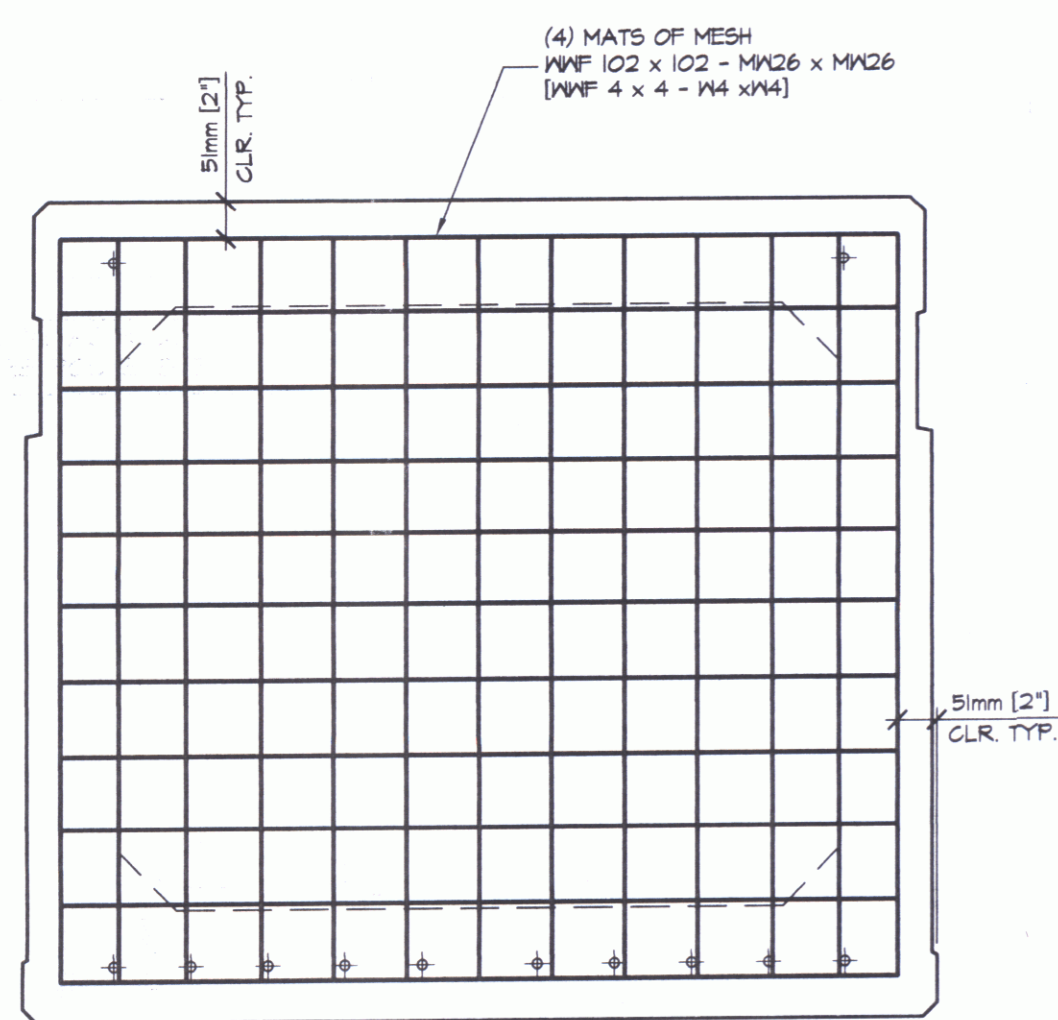
4 DIAPHRAGM REINF.
B.I.1 1:25



5 DIAPHRAGM SECTION
B.I.1 1:25



1 REINFORCING SECTION
B.I.1 1:10



2 END BLOCK SECTION
B.I.1 1:10



DETENSIONING SCHEDULE
N.T.S.

MARK: CBI QTY: 8

MATERIAL LIST / BEAM			
ITEM	MARK	DESCRIPTION	QTY.
1	CB401E	#13 (#4) BENT BAR (EPOXY COATED)	56
2	CB402E	#13 (#4) BENT BAR (EPOXY COATED)	56
3	CB403E	#13 (#4) BENT BAR (EPOXY COATED)	50
4	CB404E	#13 (#4) BENT BAR (EPOXY COATED)	28
5			
6		#13 (#4) x 1105mm [3'-7 1/2"] (EPOXY COATED)	12
7			
8		SHEET SIZE 965mm [3'-2"] x 1105mm [3'-7 1/2"]	
9		WVF 102 x 102 - Mx26 x Mx26 [WVF 4 x 4 - M4 x M4]	8
10			
11			
12			

SHOP DRAWING REVIEW

REVIEWED APPROVAL: STAMPEL CONTRACT DOCUMENTS AND APPROVED, BUT ONLY FOR CONFORMANCE TO THE DESIGN CONCEPT OF THE WORK, AND SUBJECT TO FURTHER LIMITATIONS AND REQUIREMENTS CONTAINED IN THE CONSTRUCTION CONTRACT DOCUMENTS.

REJECTED REVISE AND RESUBMIT FURNISH AS CORRECTED

CORRECTIONS OR COMMENTS MADE ON THE SHOP DRAWINGS DURING THIS REVIEW DO NOT RELIEVE CONTRACTOR FROM COMPLIANCE WITH REQUIREMENTS OF THE DRAWINGS AND SPECIFICATIONS. THIS CHECK IS ONLY FOR REVIEW OF GENERAL CONFORMANCE WITH THE DESIGN CONCEPT OF THE PROJECT AND GENERAL COMPLIANCE WITH THE INFORMATION GIVEN IN THE CONTRACT DOCUMENTS. THE CONTRACTOR IS RESPONSIBLE FOR CONFIRMING AND CORRELATING ALL QUANTITIES AND DIMENSIONS; SELECTING FABRICATION PROCESSES AND TECHNIQUES OF CONSTRUCTION; COORDINATING HIS WORK WITH THAT OF ALL OTHER TRADES; AND PERFORMING HIS WORK IN A SAFE AND SATISFACTORY MANNER.

VHB Vanasse Hangen Brustlin, Inc.
Engineers, Planners, and Scientists
Site Bedford Farms, Milton Rd.
Bedford, NH 03110 603 644 0888

Job Number: 50735.00
Reviewed By: LSG/MAC
Date: 2/4/06

J.P. CARRARA & SONS INC.
Precast & Prestress Manufacturer
2464 CASE STR., WOODBURY, VERMONT 05753 Phone: (802)388-6361 Fax: (802)388-9010

KUBRICKY CONST. CORP.
CONTRACTOR
GLENS FALLS, NEW YORK

STATE OF VERMONT A.O.T.
COUNTY OF CHITTENDEN

TOWN OF COLCHESTER - SOUTH BURLINGTON
PROJECT: LIME KILN BRIDGE
TH 4/3 (URBAN MINOR ARTERIAL), BRIDGE NO.6

DATE: NOV. 14, 2005
SCALE: NOTED
CHKD: - DFTM:T.J.D.
JOB NO: 29229-02
DWG. NO: B.I.1

P/S BOX BEAM REINF. DETAILS