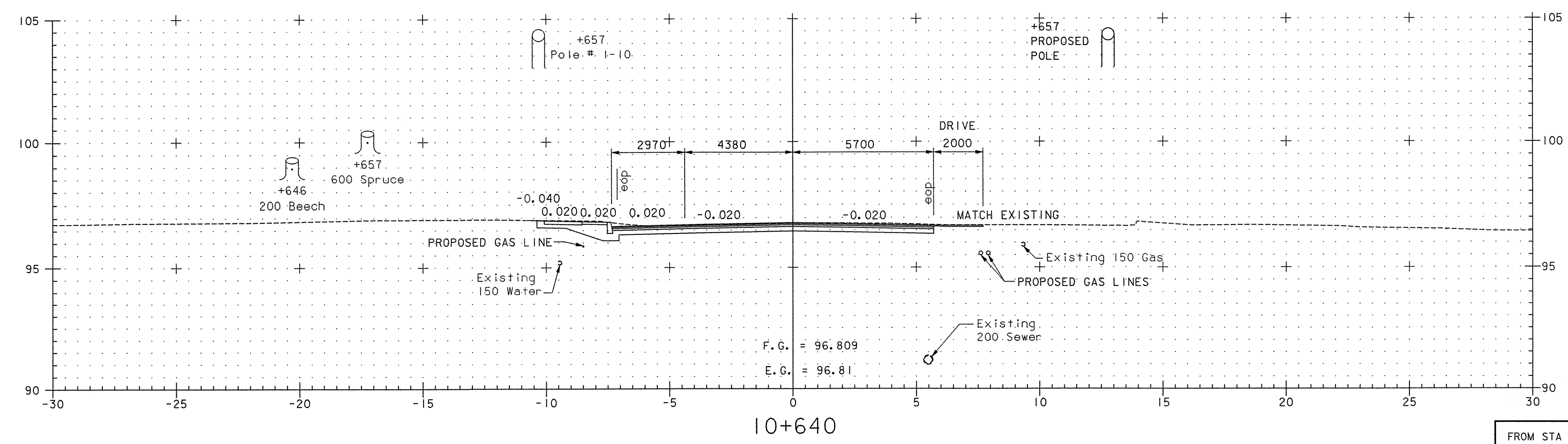
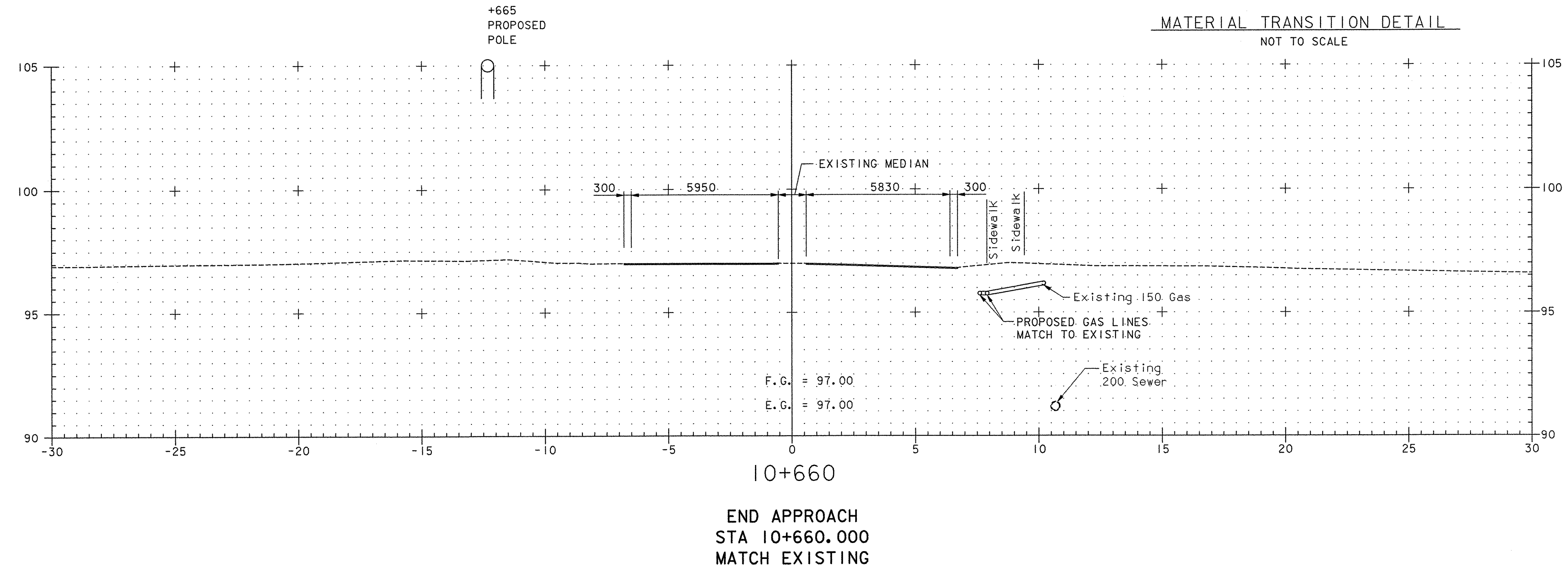


MATERIAL TRANSITION DETAIL  
NOT TO SCALE



TH 4/3

FROM STA 10+640 TO STA 10+660  
PROJECT NAME COLCHESTER - SOUTH BURLINGTON  
PROJECT NO. BRM 5600(6)S C/2  
SURVEYED BY EIV TECH. SERV. 6/97, 11/02; VTRANS 2/02, 11/02  
SHEET 117 OF 124