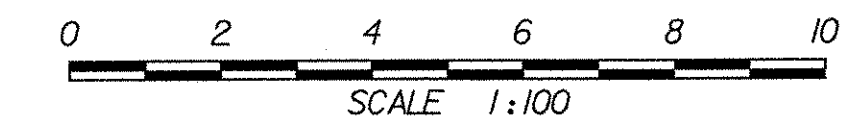
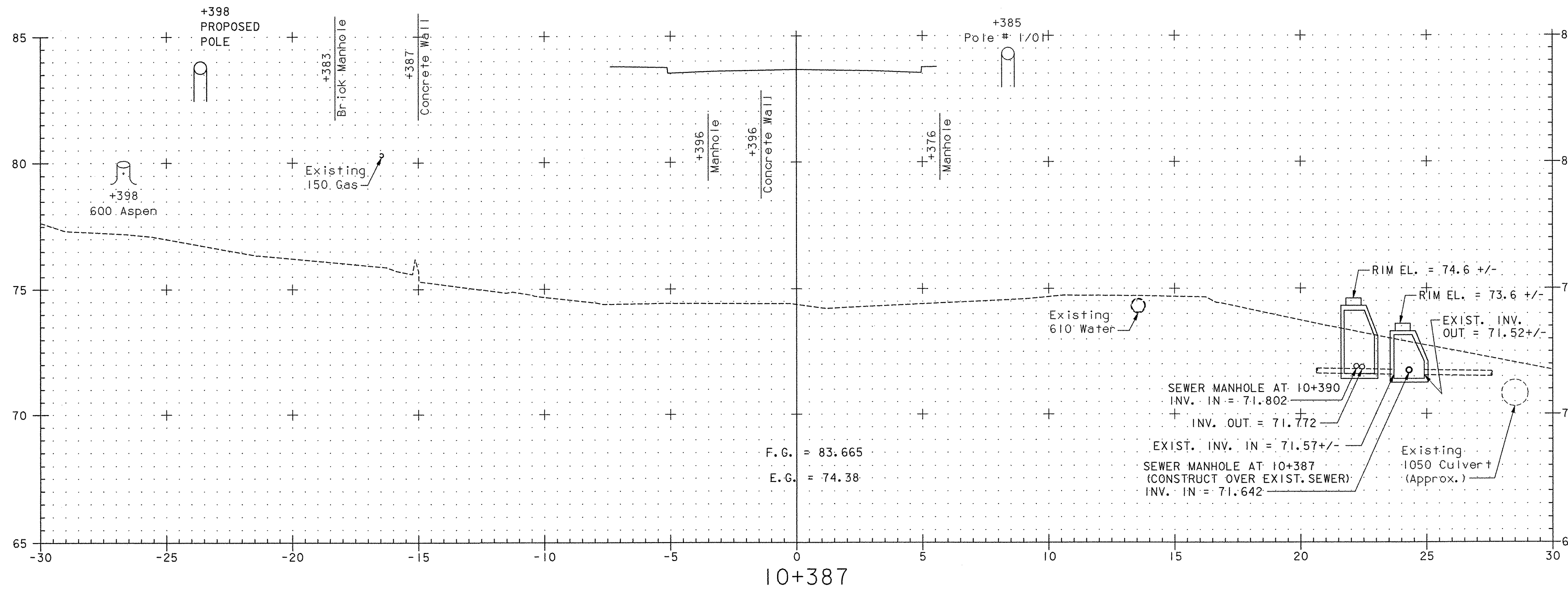
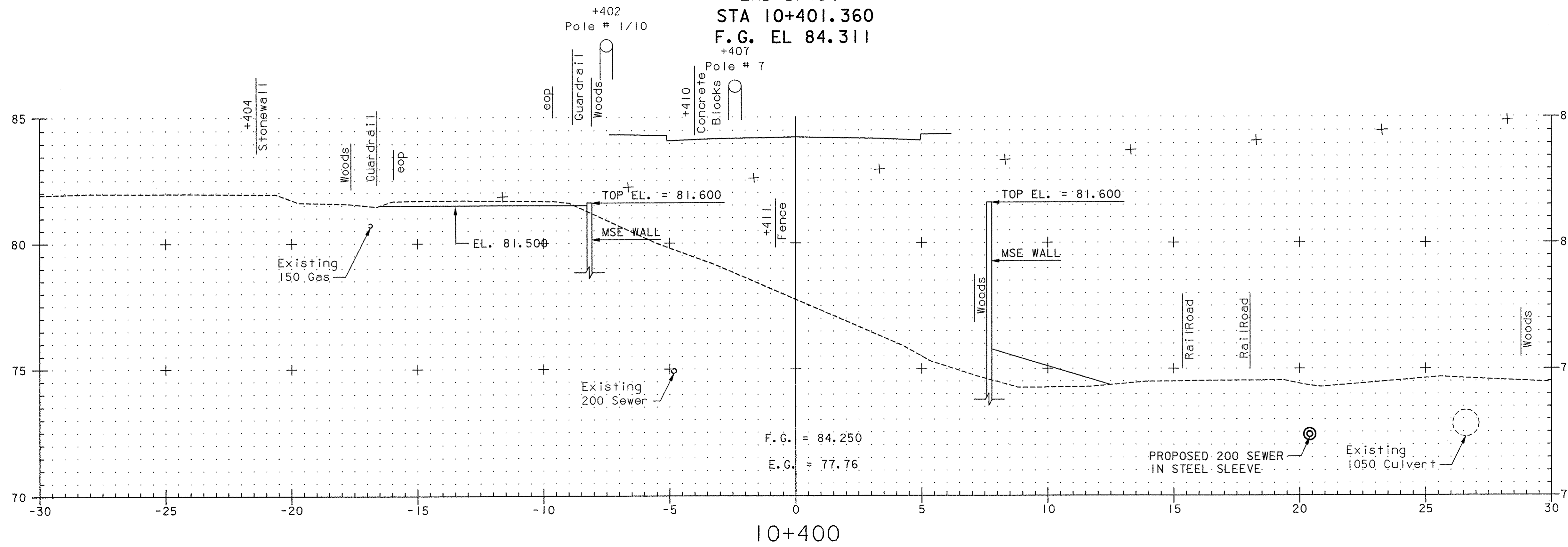


END BRIDGE  
 STA 10+401.360  
 F.G. EL 84.311



TH 4/3

FROM STA 10+387	TO STA 10+400
PROJECT NAME	COLCHESTER - SOUTH BURLINGTON
PROJECT NO.	BRM 5600(6)S C/2
SURVEYED BY	EIV TECH. SERV. 6/97, 11/02; VTRANS 2/02, 11/02
SHEET 107 OF 124	

**VHB Vanasse Hangen Brustlin, Inc.**