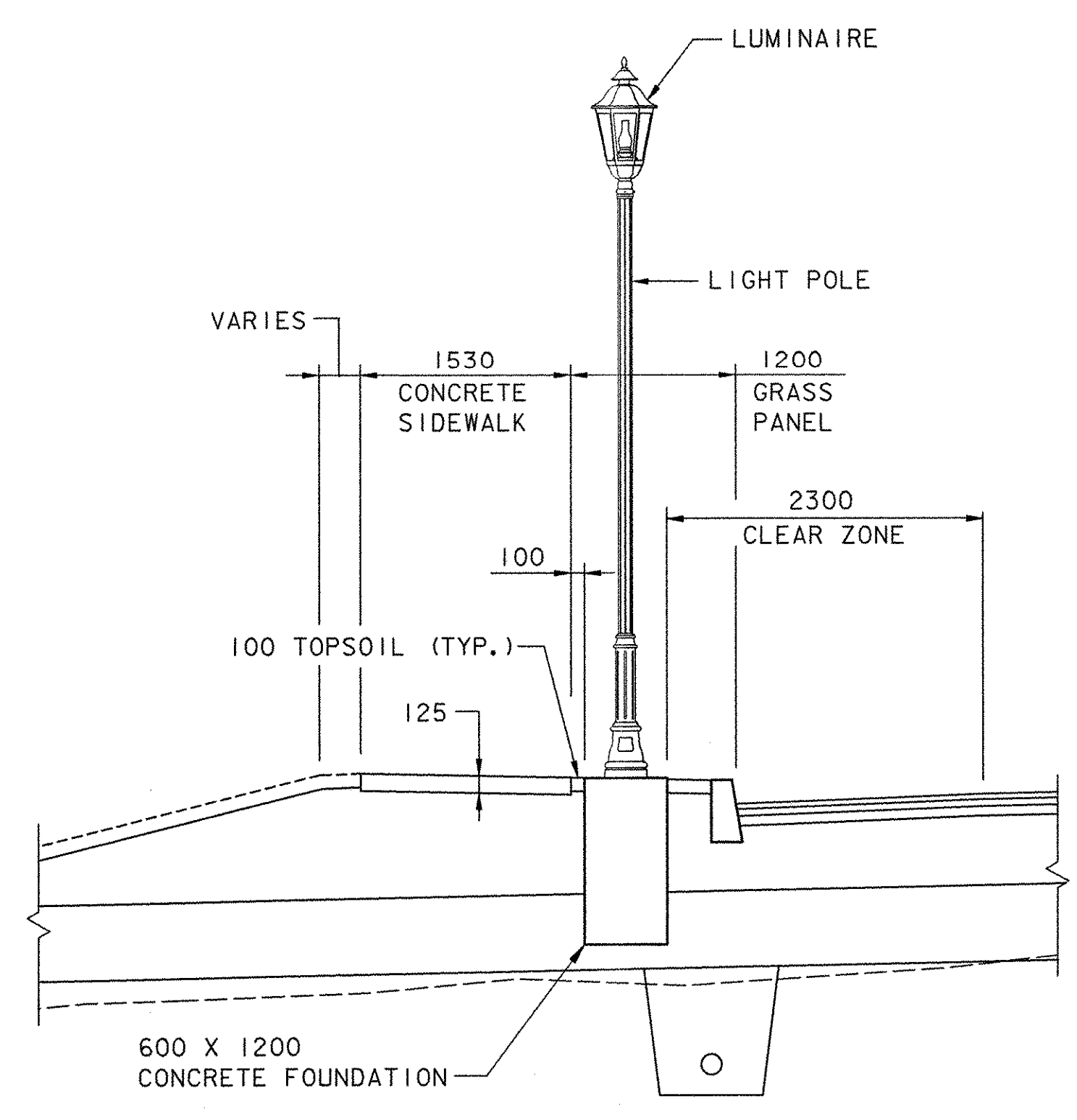
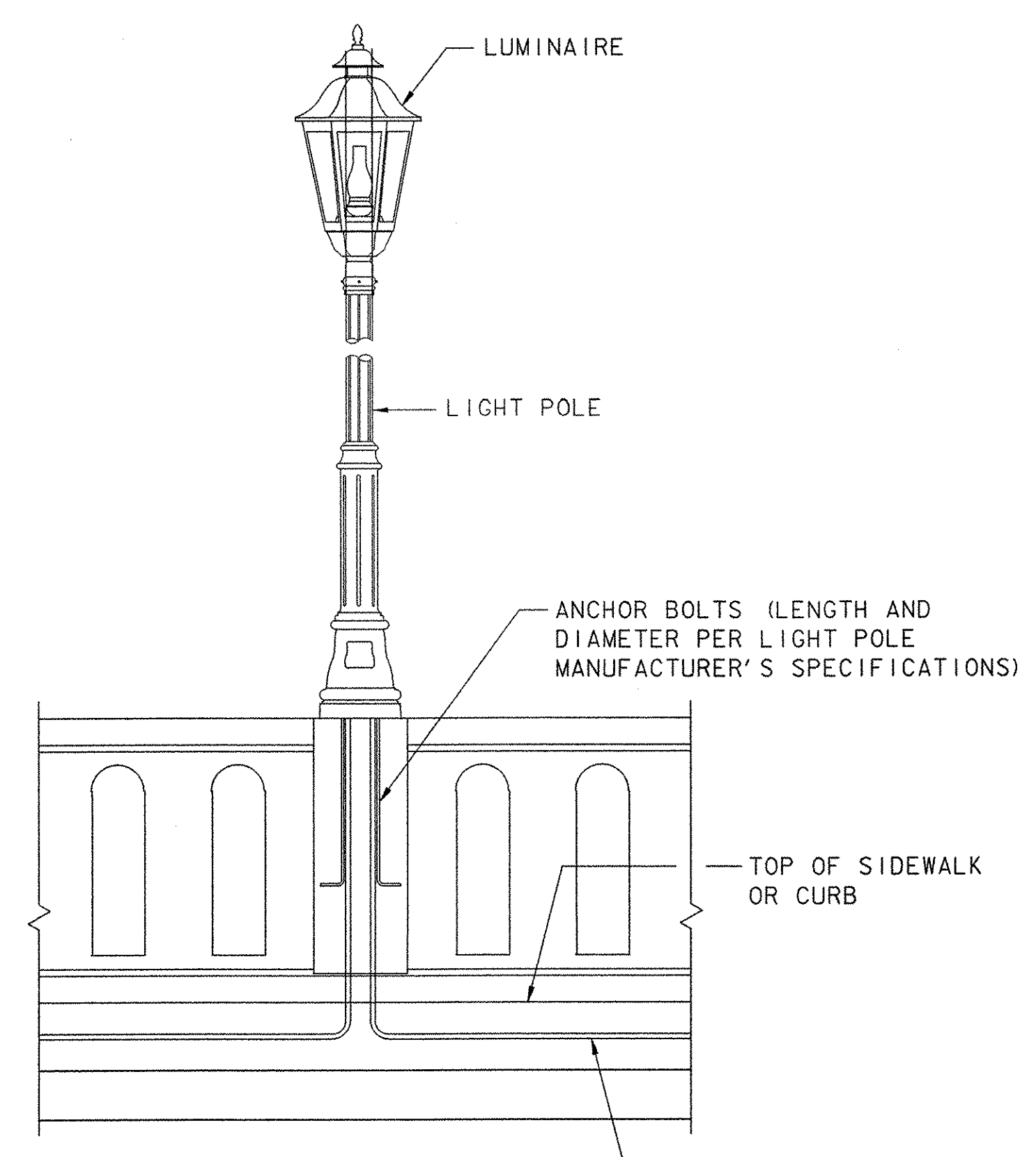
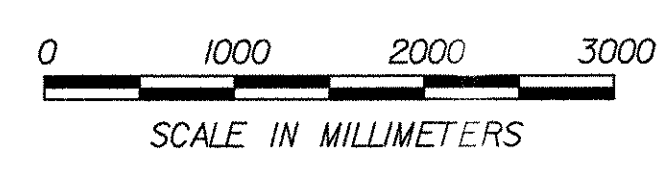


NOTES:

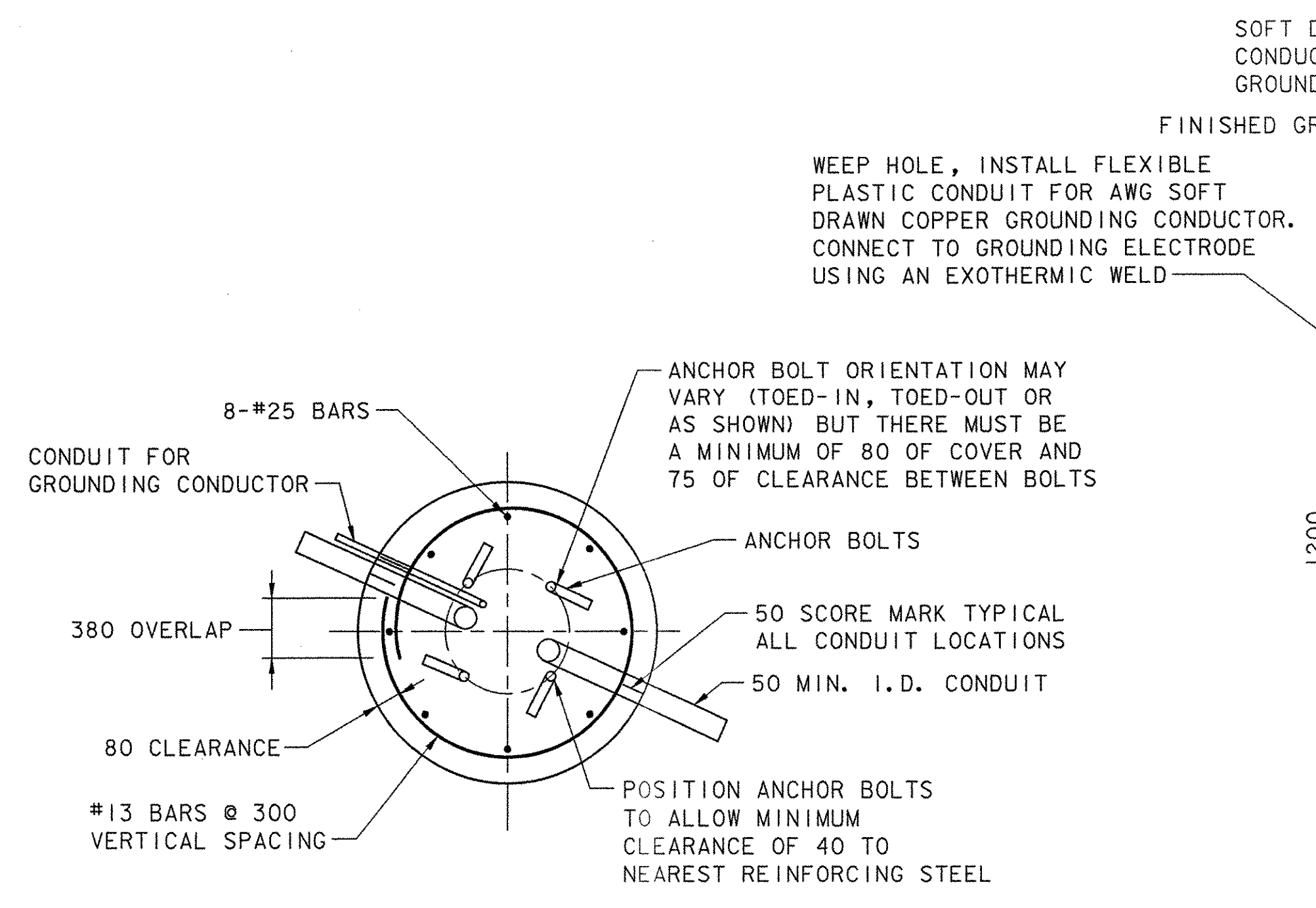
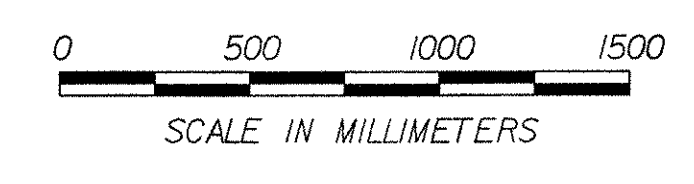
- THE FOLLOWING ROADWAY AND BRIDGE LIGHTING DESIGN PARAMETERS WERE USED:
 - IESNA RP8-00 STANDARD PRACTICE
 - COLLECTOR ROAD WITH ROAD SURFACE CLASSIFICATION OF R3 AND PEDESTRIAN CLASSIFICATION OF MEDIUM
 - ILLUMINANCE METHOD RECOMMENDED VALUE = 0.9 FC (FOR SIDEWALK ONLY)
 - UNIFORMITY RATIO: 4:1
 - HORIZONTAL ROOF MOUNTED LAMP TO MEET IES CUTOFF REQUIREMENTS
 - THE ACTUAL AVERAGE ILLUMINATION IS 1.32 FC AND THE ACTUAL MAXIMUM ILLUMINATION IS 7.73 FC FOR THE PROPOSED DESIGN
- THE PHOTOMETRIC DATA AND ISO-FOOTCANDLES OF HORIZONTAL ILLUMINATION DRAWINGS SHOWN ON THE PLANS WERE USED FOR THE DESIGN OF THIS PROJECT. OTHER MANUFACTURER'S PRODUCTS MAY BE SUBMITTED TO THE ENGINEER FOR APPROVAL IF THEY MEET OR EXCEED THE ABOVE CRITERIA AND REQUIREMENTS AND ARE SIMILAR TO THE AESTHETICS PROPERTIES OF THE PROPOSED LUMINAIRES AND POLES. ALTERNATE MANUFACTURER'S PRODUCTS WILL REQUIRE THE CITY OF SOUTH BURLINGTON AND THE TOWN OF COLCHESTER APPROVAL IN WRITING.
- THE LIGHT POLES ON THE BRIDGE SHALL BE MOUNTED ON THE BRIDGE RAIL PILASTERS AS DETAILED IN THE PLANS. THE LIGHT POLES ON THE ROADWAY SHALL BE MOUNTED ON THE CONCRETE FOUNDATIONS AS DETAILED IN THE PLANS. FOUNDATION CONCRETE SHALL CONFORM TO THE REQUIREMENTS OF SECTION 501, CONCRETE CLASS B. REINFORCING STEEL SHALL CONFORM TO THE REQUIREMENTS OF SECTION 507. ALL COSTS FOR CONCRETE FOUNDATIONS, INCLUDING REINFORCING, ANCHOR BOLTS, AND APPURTENANCES SHALL BE INCIDENTAL TO ITEM 679.45, LIGHT POLE (MOD. - DECORATIVE, ROADWAY).
- THE LUMINAIRES SHALL BE DYNAMIC D323 (OR APPROVED EQUAL) CAST ALUMINUM FIXTURE, COLOR SMOOTH SATIN BLACK, WITH CLEAR ACRYLIC LENSES WITH A HORIZONTAL ROOF-MOUNTED 120-VOLT, 175-WATT METAL HALIDE LAMP WITH TYPE 3 REFRACTOR WITH DECORATIVE GLASS CHIMNEY AND DUSK-TO-DAWN PHOTOCELL.
- BRIDGE LIGHT POLES SHALL BE DYNAMIC MANHATTAN SERIES (OR APPROVED EQUAL) WITH 100 mm O.D. FLUTED SHAFTS AND BANNER MOUNTS, COLOR SMOOTH SATIN BLACK, 3.05 m LONG. ROADWAY LIGHT POLES SHALL BE DYNAMIC SUGARLAND SERIES (OR APPROVED EQUAL) WITH 100 mm O.D. FLUTED SHAFTS AND BANNER MOUNTS, COLOR SMOOTH SATIN BLACK, 4.26 m LONG. POLES SHALL BE INSTALLED OUTSIDE THE CLEAR ZONE AND A MINIMUM DISTANCE OF 1 m FROM ALL DRIVEWAYS.
- THE POWER SOURCES FOR THE LIGHTS ON THE BRIDGE AND ROADWAY SHALL BE SEPARATE AND METERED FOR EACH OF COLCHESTER AND SOUTH BURLINGTON. THE CONTRACTOR SHALL BE RESPONSIBLE FOR ALL PERMITS AND SHALL PROVIDE A DESIGN IN CONFORMANCE WITH ALL LOCAL AND STATE CODES AND VTRANS STANDARDS E173M, E175M, E180AM, E180BM, E181M TO THE ENGINEER FOR ALL DETAILS NECESSARY FOR THE CONSTRUCTION OF THE POWER SUPPLY, NOT LIMITED TO CONDUITS, SLEEVES, WIRE, GROUNDING, PULL BOXES, AND JUNCTION BOXES. COLCHESTER WILL HAVE METERED SERVICE FROM GREEN MOUNTAIN POWER (GMP) AND SOUTH BURLINGTON SERVICE WILL BE METERED BUT SHALL BE PROVIDED THROUGH AN ENERGY TARIFF PLUS MAINTENANCE AGREEMENT WITH GMP. METER BOXES SHALL BE AS PER GMP STANDARDS. CONTRACTOR SHALL ENSURE POWER SERVICE DESIGN DOES NOT CONFLICT WITH ANY EXISTING OR PROPOSED UTILITIES OR DRAINAGE.
- THE ACCEPTED QUANTITIES OF STREET LIGHTING SHALL BE PAID FOR AS 678.23 WIRED CONDUIT, 678.25 PULL BOX, 678.26 JUNCTION BOX, 678.30 ELECTRICAL CONDUIT SLEEVE, 679.21 LIGHT POLE BASE (MOD.-DECORATIVE), 679.45 LIGHT POLE (MOD. - DECORATIVE, ROADWAY), 679.45 LIGHT POLE (MOD.-DECORATIVE, BRIDGE), AND 679.50 LUMINAIRE (MOD.-DECORATIVE FIXTURE). PAYMENT UNDER EACH ITEM WILL BE FULL COMPENSATION FOR MATERIAL PREPARATION, SUBMITTALS, MODIFICATIONS, RE-SUBMITTALS AND INSTALLATION, AND FOR FURNISHING ALL LABOR, TOOLS, EQUIPMENT AND INCIDENTALS NECESSARY TO COMPLETE THE WORK.



ROADWAY LIGHT
SCALE: 1:40

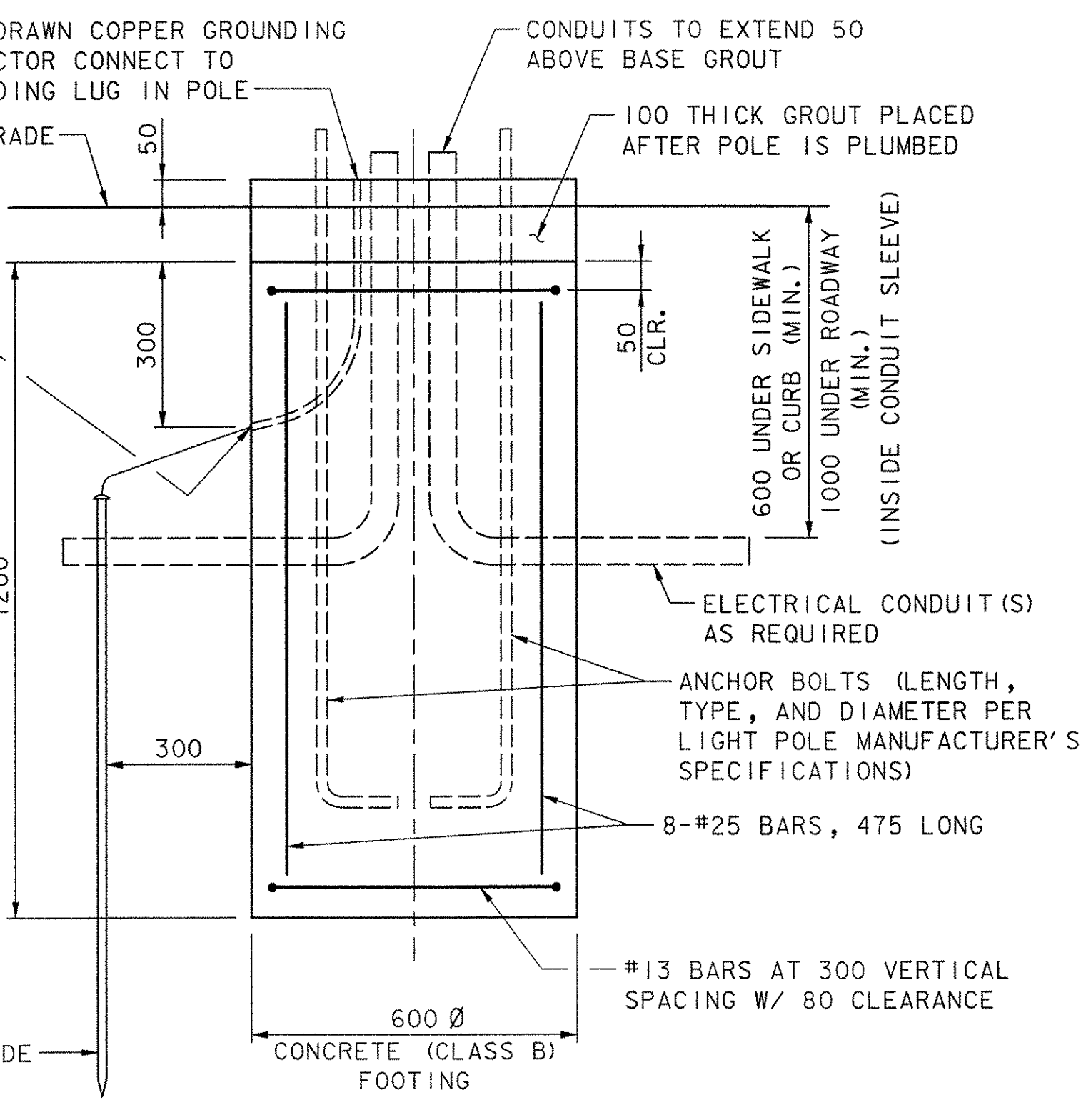
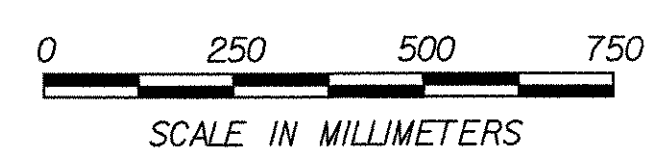


BRIDGE LIGHT
SCALE: 1:20

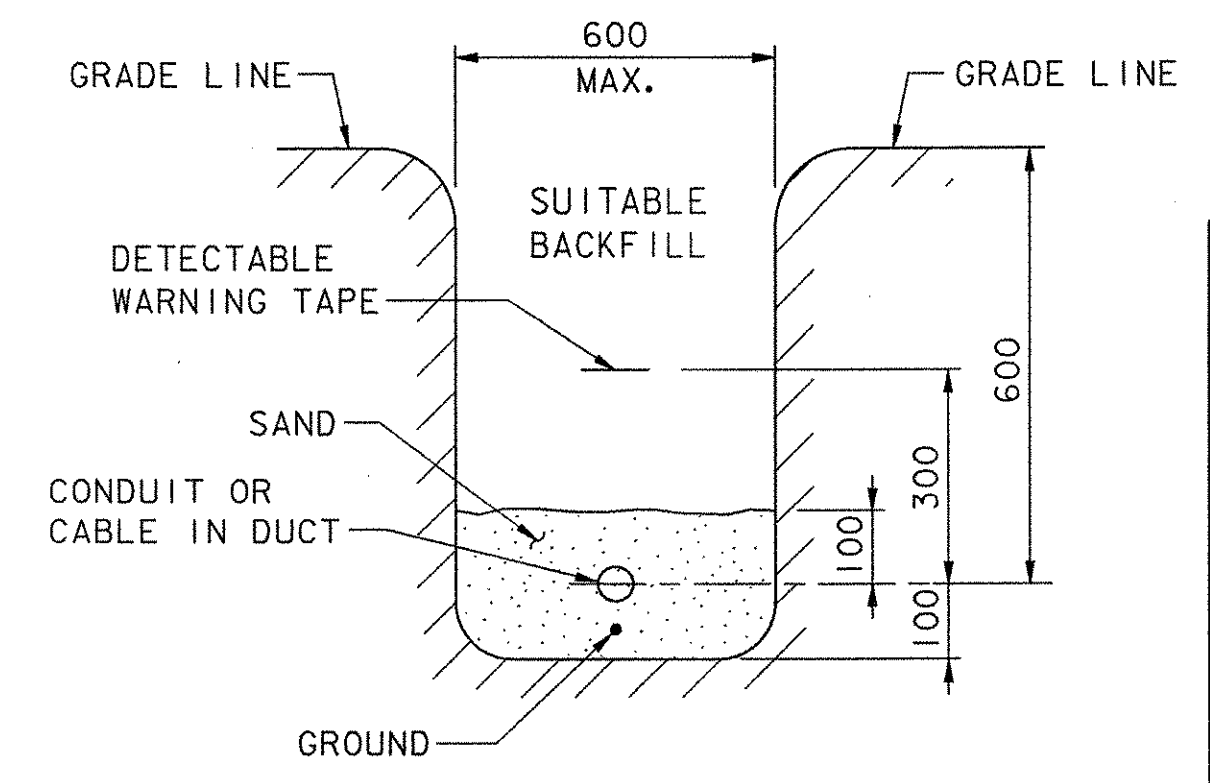


SECTION

CONCRETE FOUNDATION
SCALE: 1:10



ELEVATION



BURIED CONDUIT
NOT TO SCALE

DATUM
VERTICAL NAVD 88
HORIZONTAL NAD 83 (92)

VHB Vanasse Hangen Brustlin, Inc.

STATE OF VERMONT AGENCY OF TRANSPORTATION	
Town Of COLCHESTER-SOUTH BURLINGTON	Bridge No. 6
Highway No. TH 4/3	Log Sta. Surv. Sta.
TH 4/3 OVER WINOOSKI RIVER & N. E. C. R.	
LIGHTING DETAILS (2 OF 2)	
Designed By DYNAMIC/SM GUNN	Drawn By B. J. MASSE
Checked By M. A. COLGAN	Date 4/05
PROJECT COLCHESTER-SOUTH BURLINGTON	
PROJECT NO. BRM 5600 (6) S C/2	
I.G.C. Info.	
Bridge Sheet No. ZD139LT2	Sheet 90 of 124