

### LIGHTING LOCATIONS

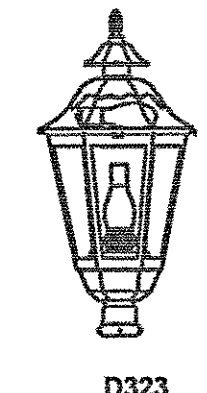
POLE NUMBER	LOCATION (STA) *	OFFSET (M)	LENGTH POLE (M)	POLE TYPE	LUMINAIRE	TOWN	REMARKS
R1	10+045.8	5.9 LT	4.37	SUGARLAND	MH 175W-D323	SO. BURLINGTON	-
R2	10+068.4	5.9 LT	4.37	SUGARLAND	MH 175W-D323	SO. BURLINGTON	-
R3	10+090.9	5.9 LT	4.37	SUGARLAND	MH 175W-D323	SO. BURLINGTON	-
R4	10+108.0	5.9 LT	4.37	SUGARLAND	MH 175W-D323	SO. BURLINGTON	-
R5	10+127.6	5.9 LT	4.37	SUGARLAND	MH 175W-D323	SO. BURLINGTON	-
R6	10+145.5	5.9 LT	4.37	SUGARLAND	MH 175W-D323	SO. BURLINGTON	-
R7	10+160.6	5.9 LT	4.37	SUGARLAND	MH 175W-D323	SO. BURLINGTON	-
R8	10+175.6	5.9 LT	4.37	SUGARLAND	MH 175W-D323	SO. BURLINGTON	-
R9	10+194.6	5.9 LT	4.37	SUGARLAND	MH 175W-D323	SO. BURLINGTON	-
R10	10+217.7	5.9 LT	4.37	SUGARLAND	MH 175W-D323	SO. BURLINGTON	-
R11	10+233.7	5.9 LT	4.37	SUGARLAND	MH 175W-D323	SO. BURLINGTON	-
R12	10+249.5	5.9 LT	4.37	SUGARLAND	MH 175W-D323	SO. BURLINGTON	-
R13	10+274.0	5.9 LT	4.37	SUGARLAND	MH 175W-D323	SO. BURLINGTON	-
R14	10+291.6	5.9 LT	4.37	SUGARLAND	MH 175W-D323	SO. BURLINGTON	-
B1	10+309.9	7.1 LT	3.15	MANHATTAN	MH 175W-D323	SO. BURLINGTON	MOUNT ON PILASTER
B2	10+309.9	5.3 RT	3.15	MANHATTAN	MH 175W-D323	SO. BURLINGTON	MOUNT ON PILASTER
B3	10+322.5	7.1 LT	3.15	MANHATTAN	MH 175W-D323	SO. BURLINGTON	MOUNT ON PILASTER
B4	10+322.5	5.3 RT	3.15	MANHATTAN	MH 175W-D323	SO. BURLINGTON	MOUNT ON PILASTER
B5	10+335.8	7.1 LT	3.15	MANHATTAN	MH 175W-D323	SO. BURLINGTON	MOUNT ON PILASTER
B6	10+335.8	5.3 RT	3.15	MANHATTAN	MH 175W-D323	SO. BURLINGTON	MOUNT ON PILASTER
B7	10+349.3	7.1 LT	3.15	MANHATTAN	MH 175W-D323	COLCHESTER	MOUNT ON PILASTER
B8	10+349.3	5.3 RT	3.15	MANHATTAN	MH 175W-D323	COLCHESTER	MOUNT ON PILASTER
B9	10+362.8	7.1 LT	3.15	MANHATTAN	MH 175W-D323	COLCHESTER	MOUNT ON PILASTER
B10	10+362.8	5.3 RT	3.15	MANHATTAN	MH 175W-D323	COLCHESTER	MOUNT ON PILASTER
B11	10+376.0	7.1 LT	3.15	MANHATTAN	MH 175W-D323	COLCHESTER	MOUNT ON PILASTER
B12	10+376.0	5.3 RT	3.15	MANHATTAN	MH 175W-D323	COLCHESTER	MOUNT ON PILASTER
B13	10+388.8	7.1 LT	3.15	MANHATTAN	MH 175W-D323	COLCHESTER	MOUNT ON PILASTER
B14	10+388.8	5.3 RT	3.15	MANHATTAN	MH 175W-D323	COLCHESTER	MOUNT ON PILASTER
B15	10+401.8	7.1 LT	3.15	MANHATTAN	MH 175W-D323	COLCHESTER	MOUNT ON PILASTER
B16	10+401.8	5.3 RT	3.15	MANHATTAN	MH 175W-D323	COLCHESTER	MOUNT ON PILASTER
R15	10+420.0	5.9 LT	4.37	SUGARLAND	MH 175W-D323	COLCHESTER	-
R16	10+438.0	5.9 LT	4.37	SUGARLAND	MH 175W-D323	COLCHESTER	-
R17	10+457.0	5.9 LT	4.37	SUGARLAND	MH 175W-D323	COLCHESTER	-
R18	10+475.9	5.9 LT	4.37	SUGARLAND	MH 175W-D323	COLCHESTER	-
R19	10+495.6	5.9 LT	4.37	SUGARLAND	MH 175W-D323	COLCHESTER	-
R20	10+515.1	5.9 LT	4.37	SUGARLAND	MH 175W-D323	COLCHESTER	-
R21	10+534.4	5.9 LT	4.37	SUGARLAND	MH 175W-D323	COLCHESTER	-
R22	10+553.9	5.9 LT	4.37	SUGARLAND	MH 175W-D323	COLCHESTER	-
R23	10+573.2	5.9 LT	4.37	SUGARLAND	MH 175W-D323	COLCHESTER	-
R24	10+597.9	5.9 LT	4.37	SUGARLAND	MH 175W-D323	COLCHESTER	-
R25	10+619.2	6.9 LT	4.37	SUGARLAND	MH 175W-D323	COLCHESTER	-
R26	10+636.0	7.8 LT	4.37	SUGARLAND	MH 175W-D323	COLCHESTER	-
R27	10+654.8	7.7 LT	4.37	SUGARLAND	MH 175W-D323	COLCHESTER	-

\* POLE STATIONS AND OFFSETS ON BRIDGE ARE APPROXIMATE. ACTUAL LOCATIONS WILL BE CENTERED ON LIGHTPOST PILASTERS. (SEE NOTE 2)

### PHOTOMETRIC DATA

#### Iso-footcandle Lines of Horizontal Illumination

Catalog # **D323 (CA) / 175MH / HR3**  
 Light Source **175w Metal Halide - Clear BD-17**  
 Description **Cast aluminum 8 sided lantern. Clear acrylic lenses, type III horizontal reflector**  
 Lamp Lumens **14,000**  
 Mounting Height **12'**



#### Conversion Factors for Alternate Height and Lamps

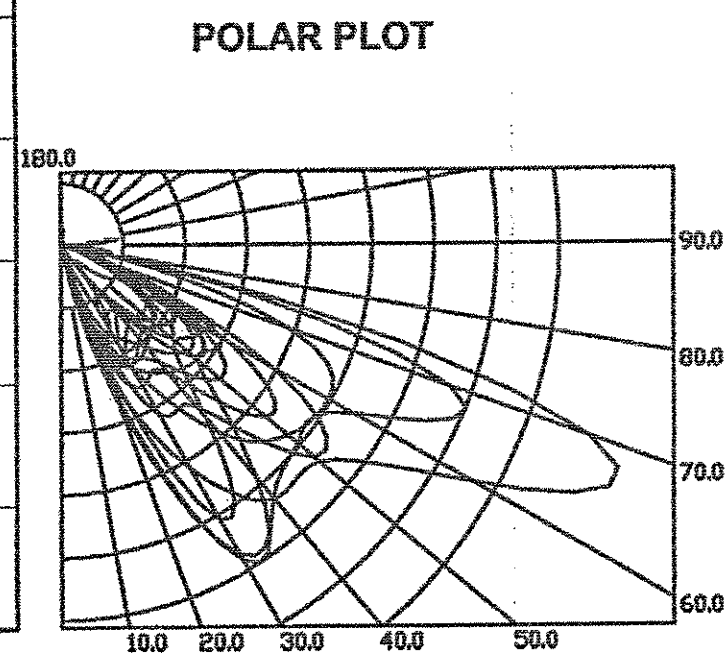
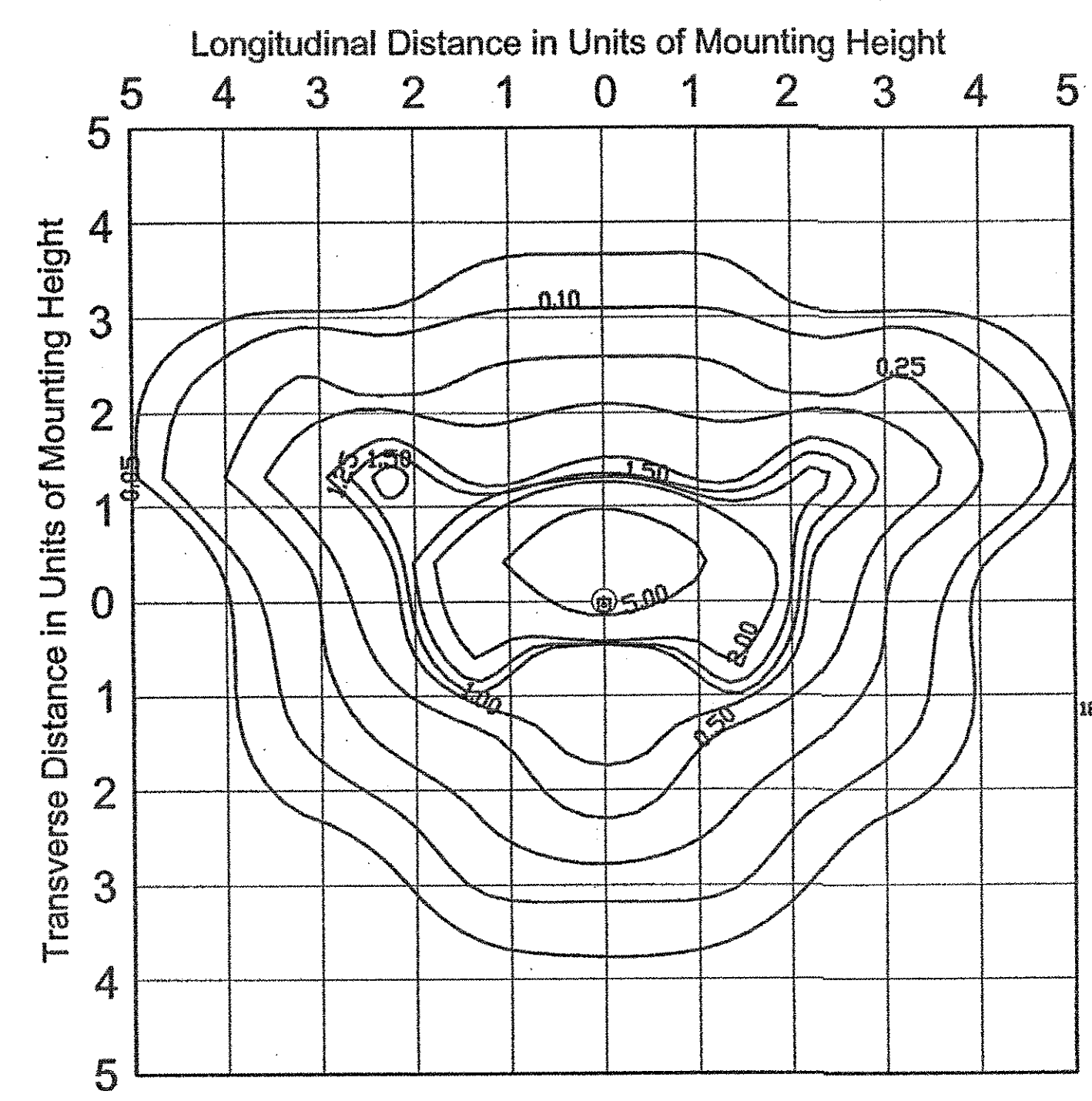
New Mounting Height	Conversion Factor
8 ft.	2.25
10 ft.	1.44
14 ft.	.74

To apply a new mounting height, take the numbers in the graphical display and multiply by the conversion factor above. The grid spacing will now be the same as the new mounting height.

Alternate Light Source	Conversion Factor
70 HPS	.45
100 HPS	.67
150 HPS	1.15
70 MH	.36
100 MH	.60

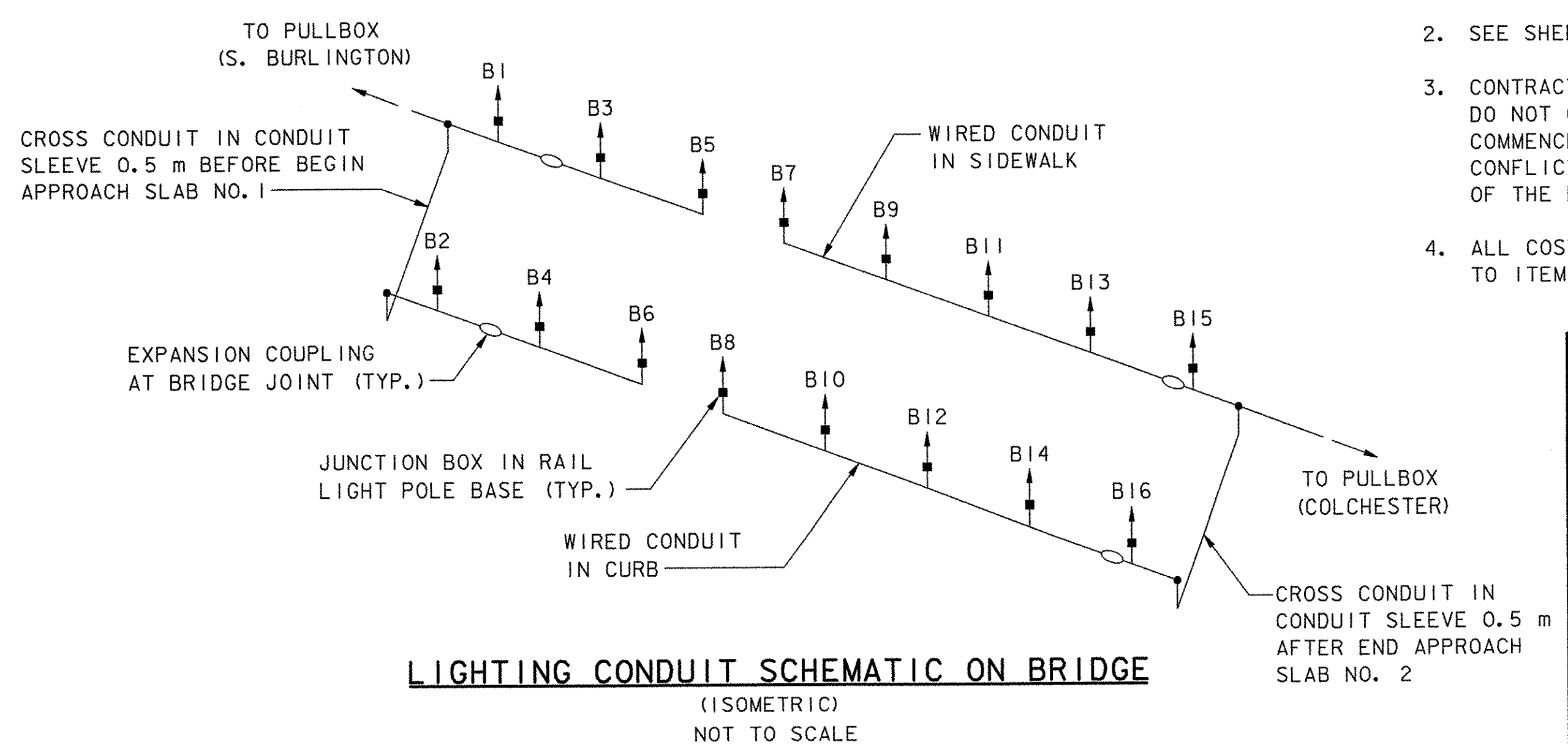
To apply a light source, take the numbers in the graphical display and multiply by the conversion factor above.

Note: A new mounting height and alternate light source can both be applied at the same time.



#### NOTES:

- SEE SHEETS 19-23 FOR LIGHTING LOCATIONS IN PLAN VIEW.
- SEE SHEETS 79-81 FOR LIGHTPOST PILASTER DETAILS ON BRIDGE.
- CONTRACTOR SHALL VERIFY THAT EXISTING UNDER GROUND UTILITIES DO NOT CONFLICT WITH LIGHTING FOUNDATIONS, PRIOR TO COMMENCEMENT OF LIGHTING AND ELECTRICAL DESIGN. IF A CONFLICT IS FOUND, IT SHALL BE RESOLVED TO THE SATISFACTION OF THE ENGINEER AND INCLUDED IN THE SUBMISSIONS.
- ALL COSTS FOR EXPANSION JOINT COUPLING SHALL BE INCIDENTAL TO ITEM 678.23, WIRED CONDUIT.



LIGHTING CONDUIT SCHEMATIC ON BRIDGE (ISOMETRIC) NOT TO SCALE

<b>STATE OF VERMONT AGENCY OF TRANSPORTATION</b>	
Town Of COLCHESTER-SOUTH BURLINGTON	Bridge No. 6
Highway No. TH 4/3	Log Sta. Surv. Sta.
TH 4/3 OVER WINOOSKI RIVER & N.E.C.R.	
<b>LIGHTING DETAILS (1 OF 2)</b>	
Designed By DYNAMIC/GUNN	Drawn By B. J. MASSE
Checked By M. A. COLGAN	Date 4/05 Bridge Design Supervisor
PROJECT COLCHESTER-SOUTH BURLINGTON	
PROJECT NO. BRM 5600 (6) S C/2	
I.G.C. Info.	
Bridge Sheet No. ZD139LT1	Sheet 89 of 124

DATUM  
VERTICAL NAVD 88  
HORIZONTAL NAD 83 (92)

**VHB Vanasse Hangen Brustlin, Inc.**