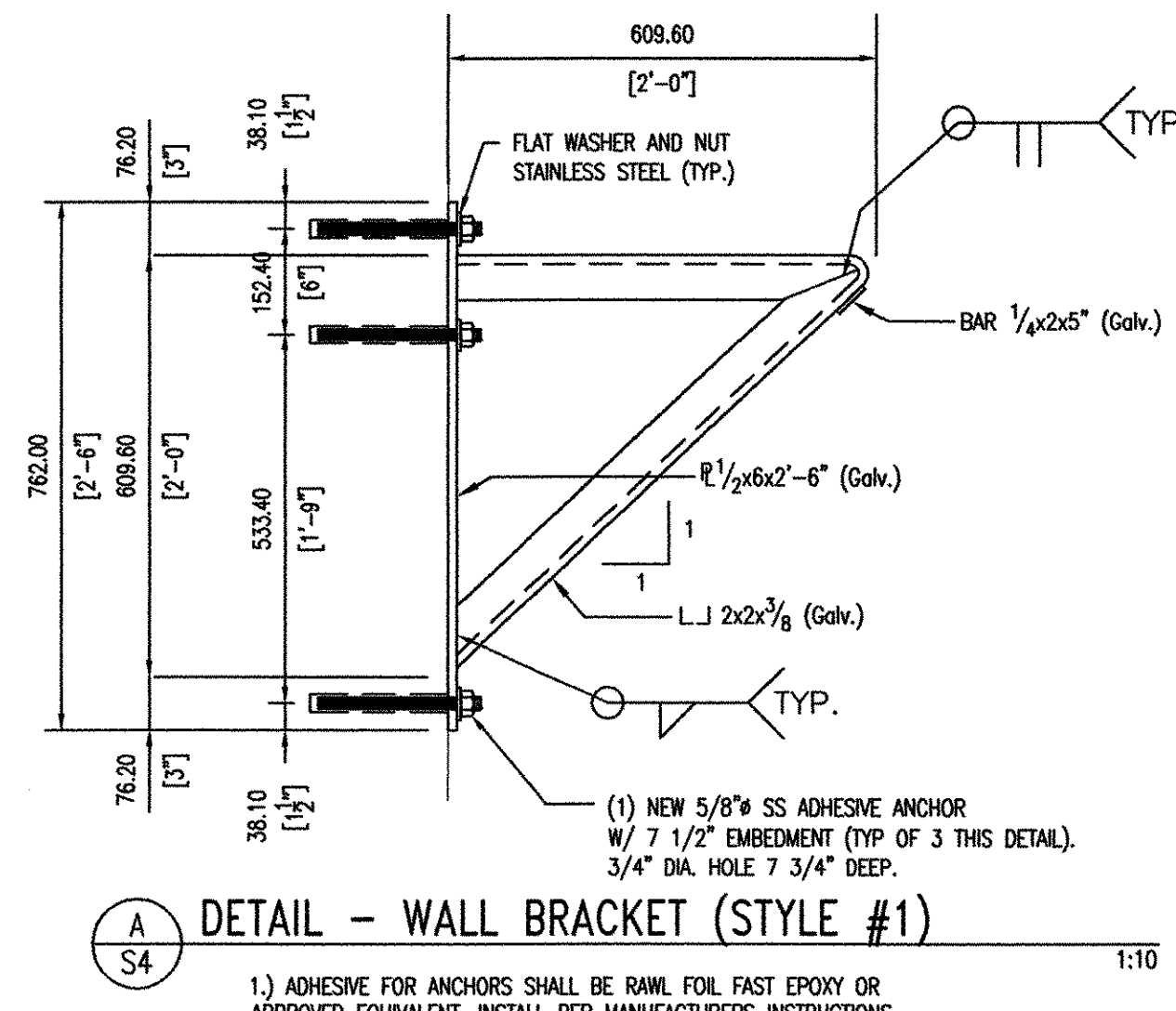
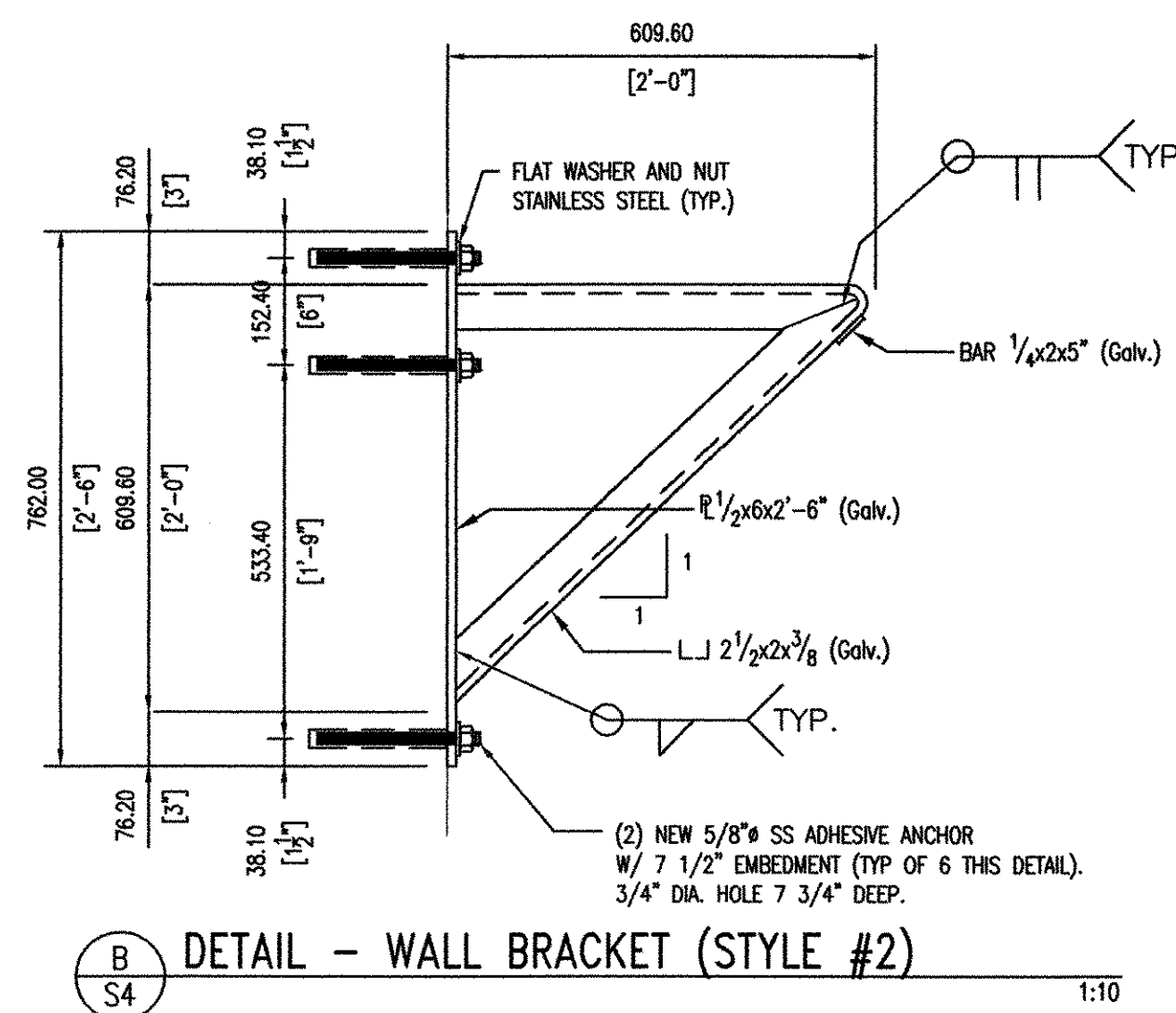


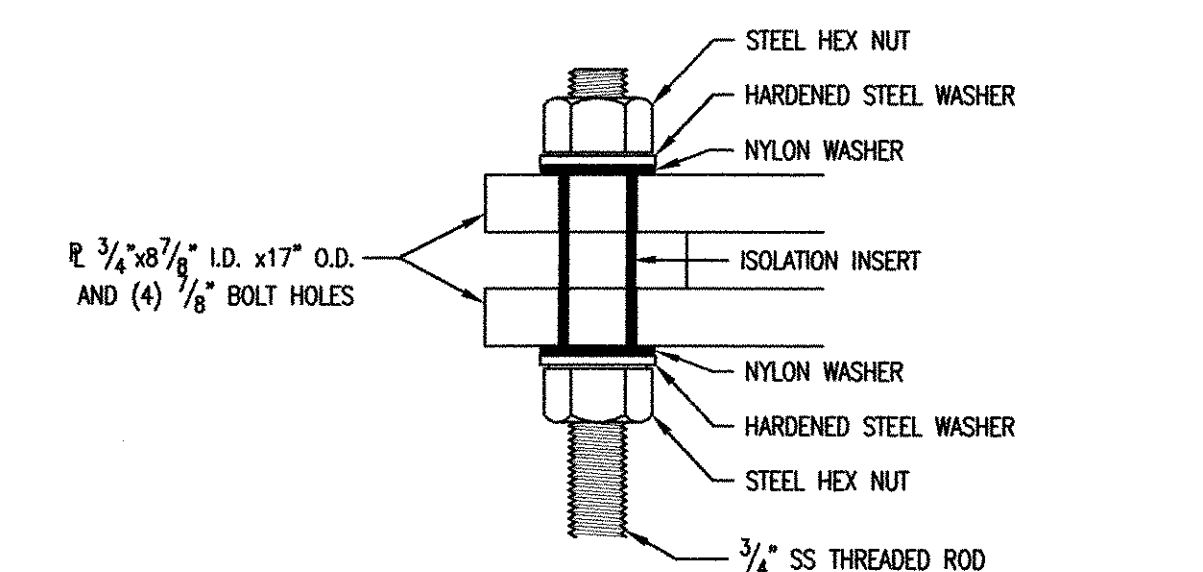
1
S4
PIPE BRACING (SIDE VIEW)
1:10



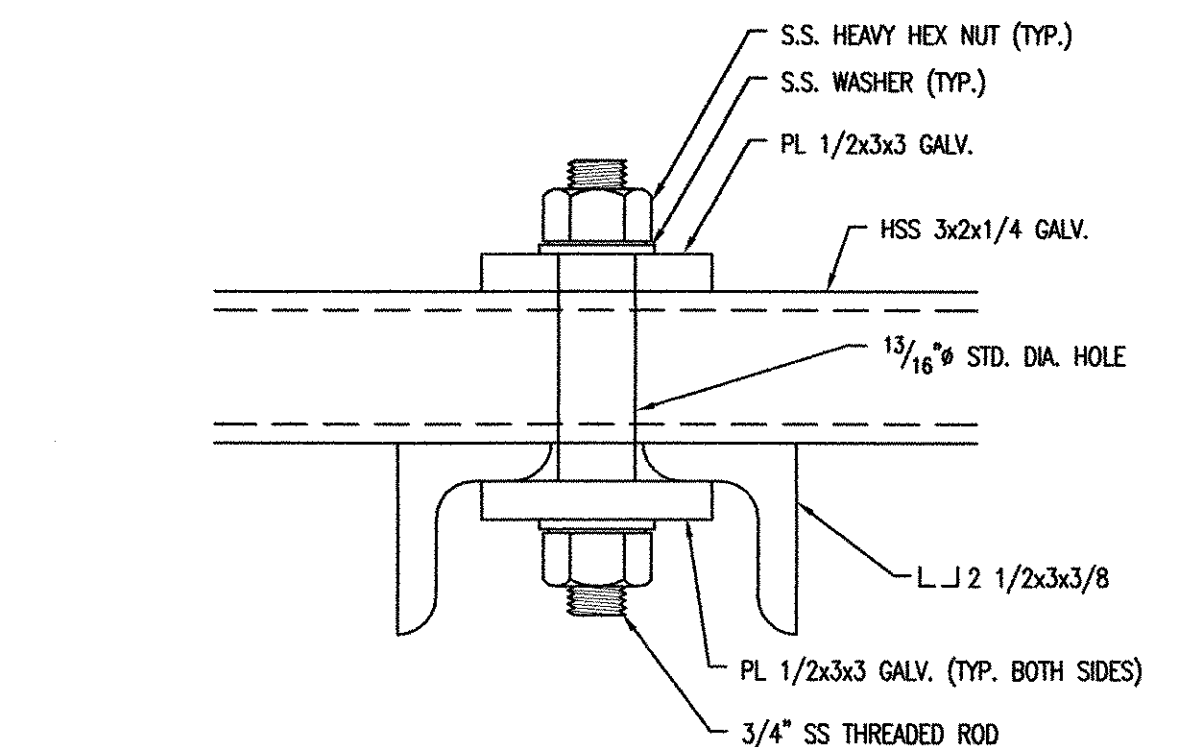
A
S4
DETAIL - WALL BRACKET (STYLE #1)
1:10



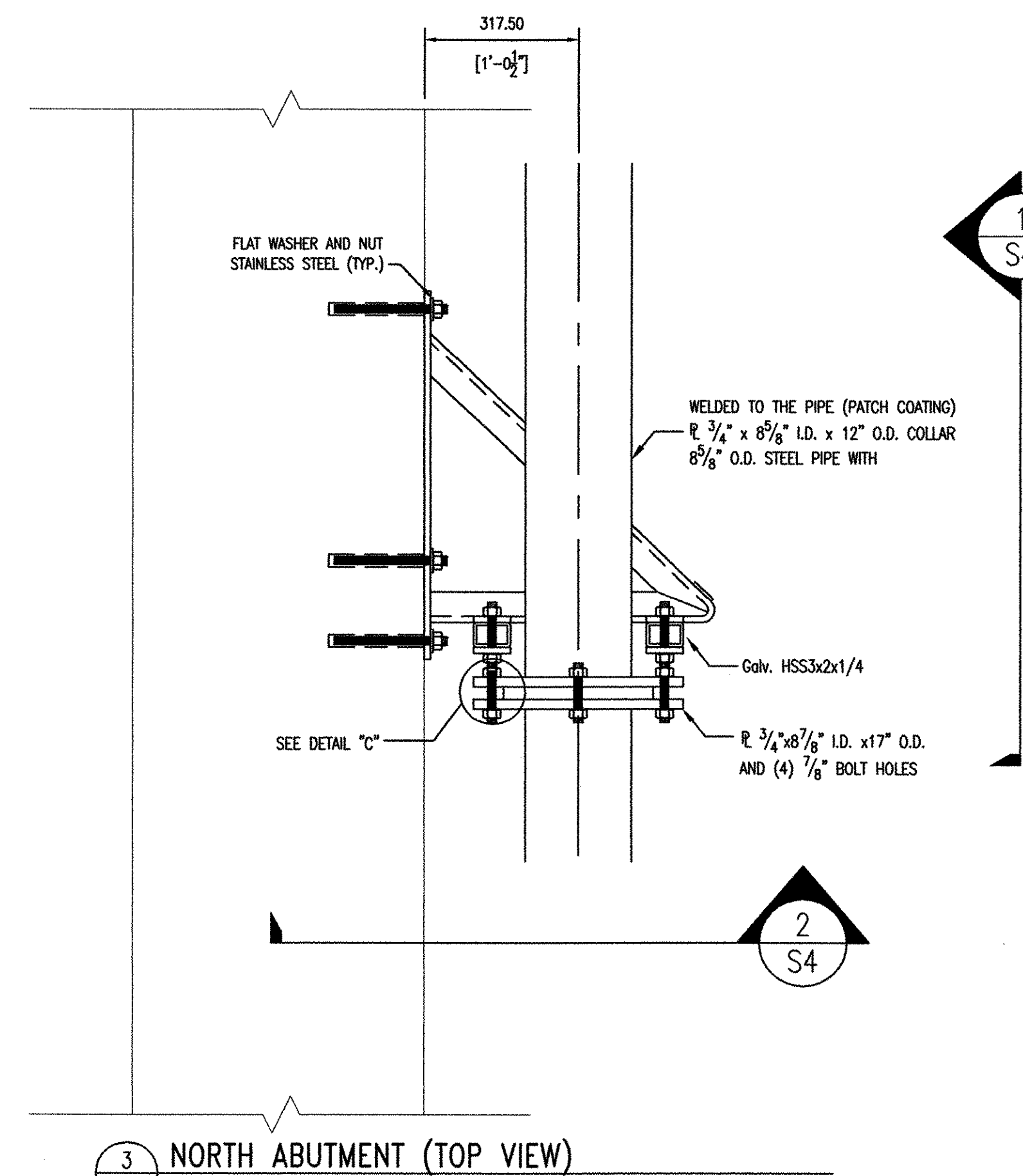
B
S4
DETAIL - WALL BRACKET (STYLE #2)
1:10



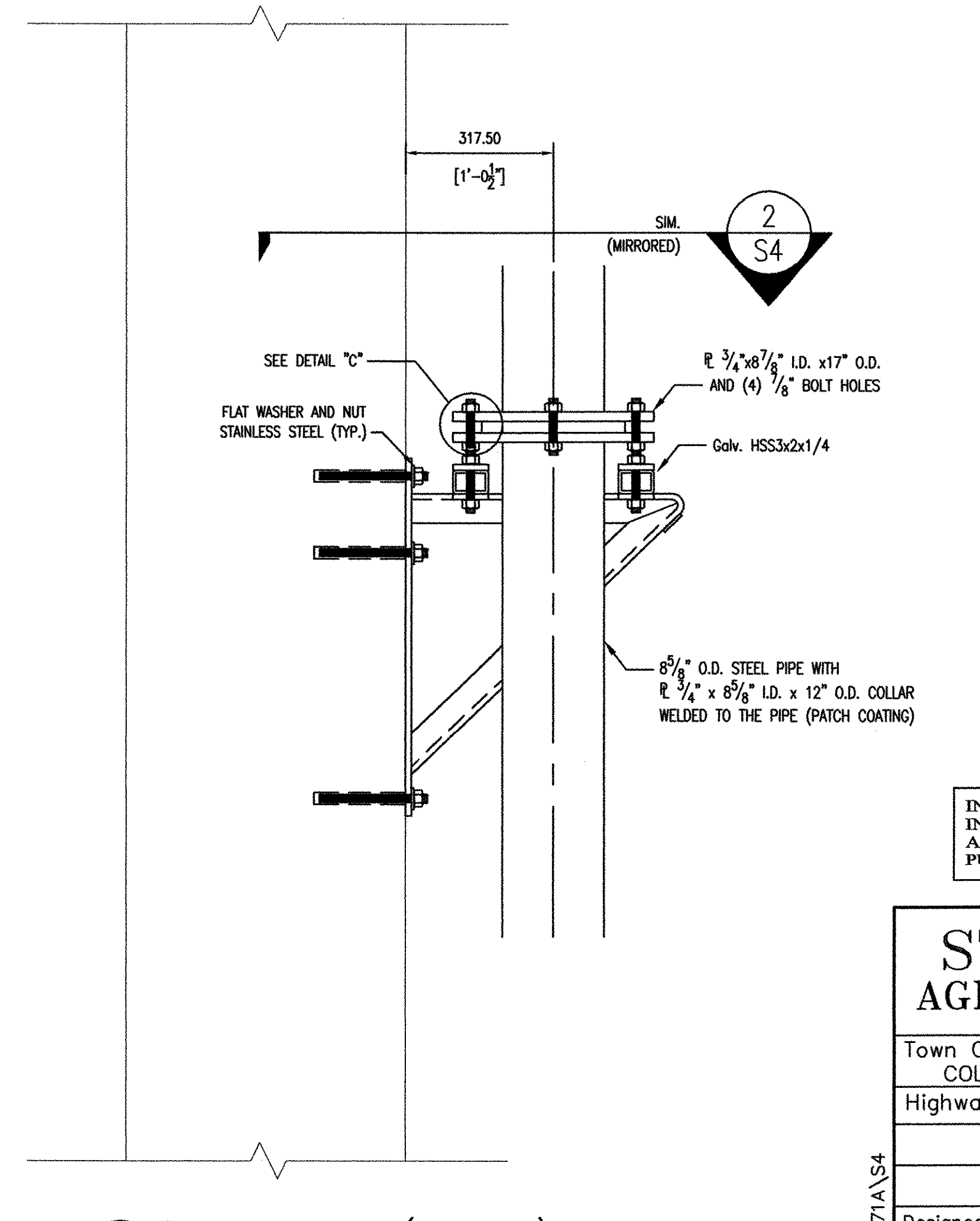
C
S4
DETAIL - ISOLATION OF THREADED ROD
1:2.5



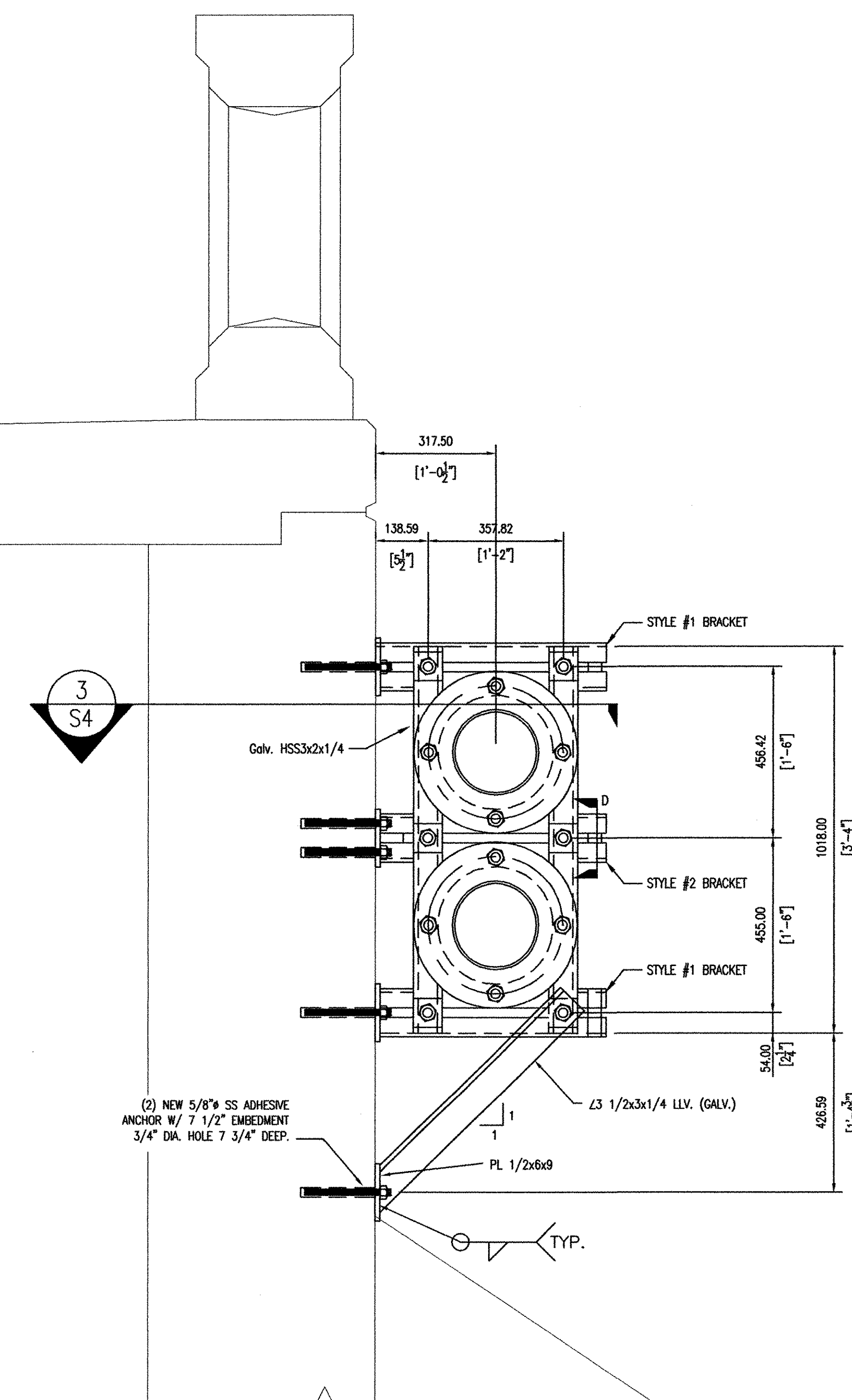
D
S4
SECTION
1:2.5



3
S4
NORTH ABUTMENT (TOP VIEW)
1:10



4
S4
SOUTH ABUTMENT (TOP VIEW)
1:10



2
S4
SECTION - NORTHERN PIPE RESTRAINT (LOOKING NORTH)
1:10

1.) ADHESIVE FOR ANCHORS SHALL BE RAWL FOIL FAST EPOXY OR APPROVED EQUIVALENT. INSTALL PER MANUFACTURERS INSTRUCTIONS.

INFORMATION ON THIS SHEET SHALL ONLY BE USED FOR THE INSTALLATION OF THE NATURAL GAS LINE OVER THE BRIDGE. ALL OTHER INFORMATION SHOULD NOT BE RELIED UPON FOR PURPOSES UNRELATED TO THE GAS LINES.

STATE OF VERMONT AGENCY OF TRANSPORTATION	
Town Of COLCHESTER-SOUTH BURLINGTON	Bridge No. 6
Highway No. TH 4/3	Log Sta. Surv. Sta.
TH 4/3 OVER WINOOSKI RIVER AND N.E.C.R.	
BRIDGE GAS LINE SUPPORTS	
Designed By KNIGHT CONSULTING	Drawn By A. RICHER
Checked By E. GODDARD/B. EVANS	Date 04/05
Bridge Design Supervisor	
PROJECT COLCHESTER-SOUTH BURLINGTON	PROJECT NO. BRM 5600 (6) S
I.G.C. Info.	
Bridge Sheet No. GAS LINE SUPPORTS - S4 Sheet 88 of 124	

KCE S:\01271A\S4