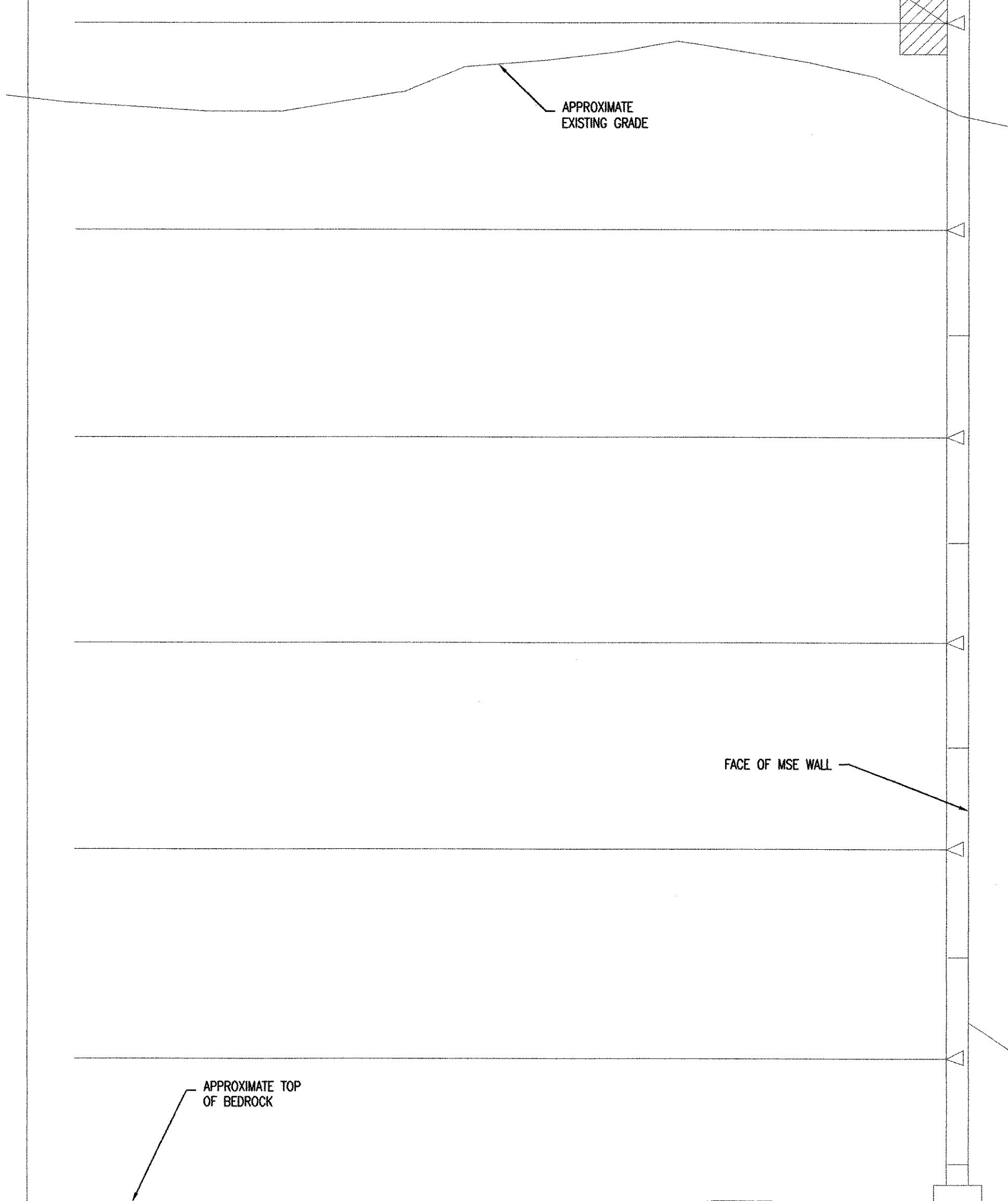


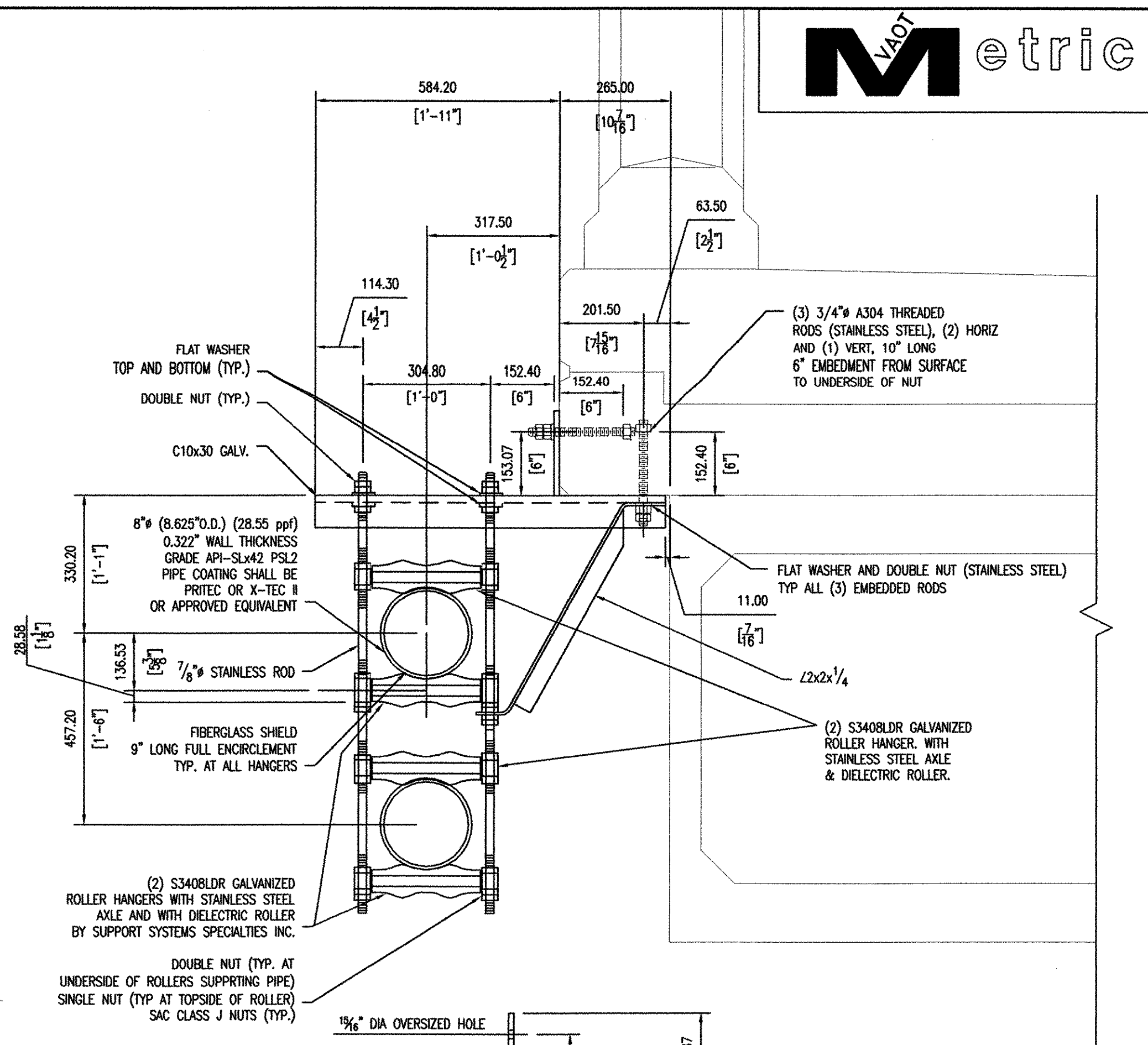
1 SECTION AT GRADE
SCALE: 1:25

ITEM	DESCRIPTION	# REQUIRED	# TO ORDER
ROLLERS	S340BLDR STAINLESS STEEL ROLLER HANGER, WITH STAINLESS STEEL AXLE AND DIELECTRIC ROLLER BY SUPPORT SYSTEMS SPECIALTIES INC. (SEE DETAIL 3/3A ON S3)	72	80
FIBERGLASS INSULATING SHIELD	8" FULL ENCIRCLEMENT FIBERGLASS INSULATING SLEEVE (9" LENGTH) COMPLETELY SURROUNDING 8" PRITEC STEEL SCH. 40 GAS PIPE. (SEE DETAIL 3 ON THIS SHEET)	36	50
7/8" THREADED ROD	7/8" A304 STAINLESS STEEL THREADED ROD (20' LENGTHS FIELD CUT TO LENGTH AS REQUIRED) (SEE DETAIL 3 ON THIS SHEET)	126'	140' [(7) 20' LENGTHS]
3/4" THREADED ROD EMBEDDED IN PRECAST	3/4" A304 STAINLESS STEEL THREADED ROD (EMBEDDED IN CONCRETE PLANK (20' LENGTHS CUT INTO 10" LONG LENGTHS AS REQUIRED)	54'	60' [(3) 20' LENGTHS]
3/4" THREADED ROD	3/4" STAINLESS STEEL THREADED ROD (20' LENGTHS FIELD CUT TO LENGTH AS REQUIRED) (SEE DETAIL C ON S4)	11'	20' [(1) 20' LENGTH]
5/8" THREADED ROD EMBEDDED IN WINGWALL	5/8" STAINLESS STEEL THREADED ROD (20' LENGTHS FIELD CUT TO LENGTH AS REQUIRED) (SEE DETAIL 2 ON S4)	26'	40' [(2) 20' LENGTHS]
7/8" NUT	7/8" STAINLESS STEEL HEAVY HEX NUT. (SEE DETAIL 3 ON THIS SHEET)	540	600
3/4" NUT	3/4" STAINLESS STEEL HEAVY HEX NUT. (SEE DETAILS 3 ON THIS SHEET, C AND D ON S4)	234	300
5/8" NUT	1/2" STAINLESS STEEL HEAVY HEX NUT. (SEE DETAIL 2 ON S4)	28	50
7/8" WASHER	7/8" STAINLESS STEEL FLAT WASHER. (SEE DETAIL 3 ON THIS SHEET)	72	100
3/4" WASHER	3/4" STAINLESS STEEL FLAT WASHER. (SEE DETAILS 3 ON THIS SHEET, C AND D ON S4)	162	200
1/2" WASHER	1/2" STAINLESS STEEL FLAT WASHER. (SEE DETAIL 2 ON S4)	28	50
3/4" NYLON WASHER	3/4" NYLON WASHER (SEE DETAIL C ON S4)	32	60
3/4" ISOLATION INSERT	3/4" ISOLATION INSERT (APPROXIMATELY 3" LONG CUT TO EXACT LENGTH IN FIELD) (SEE DETAIL C ON S4)	16	60
FABRICATED C10x30 AND PLATE ASSEMBLY	(SEE DETAIL 3 ON THIS SHEET) (GALVANIZED)	18	20
FABRICATED L2x2x1/4	(SEE DETAIL 3 ON THIS SHEET) (GALVANIZED)	18	20
HSS 3x2x1/4	(SEE DETAIL 2 ON S4) (GALVANIZED)	4	4
BRACKET ASSEMBLY 1	(SEE DETAIL A ON S4) (GALVANIZED) INCLUDES MOUNTING PLATE AND CORNER BAR (SHOP WELDED)	4	4
BRACKET ASSEMBLY 2	(SEE DETAIL B ON S4) (GALVANIZED) INCLUDES MOUNTING PLATE AND CORNER BAR (SHOP WELDED)	2	2
PLATE 1/2X3X3	(SEE DETAIL D ON S4) (GALVANIZED)	24	30
PLATE 3/4X17 O.D.	(SEE DETAIL 2 ON S4) (GALVANIZED)	8	10
L3 1/2X3X1/4 BRACE AND PLATE ASSEMBLY	(SEE DETAIL 2 ON S4) (GALVANIZED) INCLUDES 1/2x6x9 MOUNTING PLATE (SHOP WELDED)	2	2

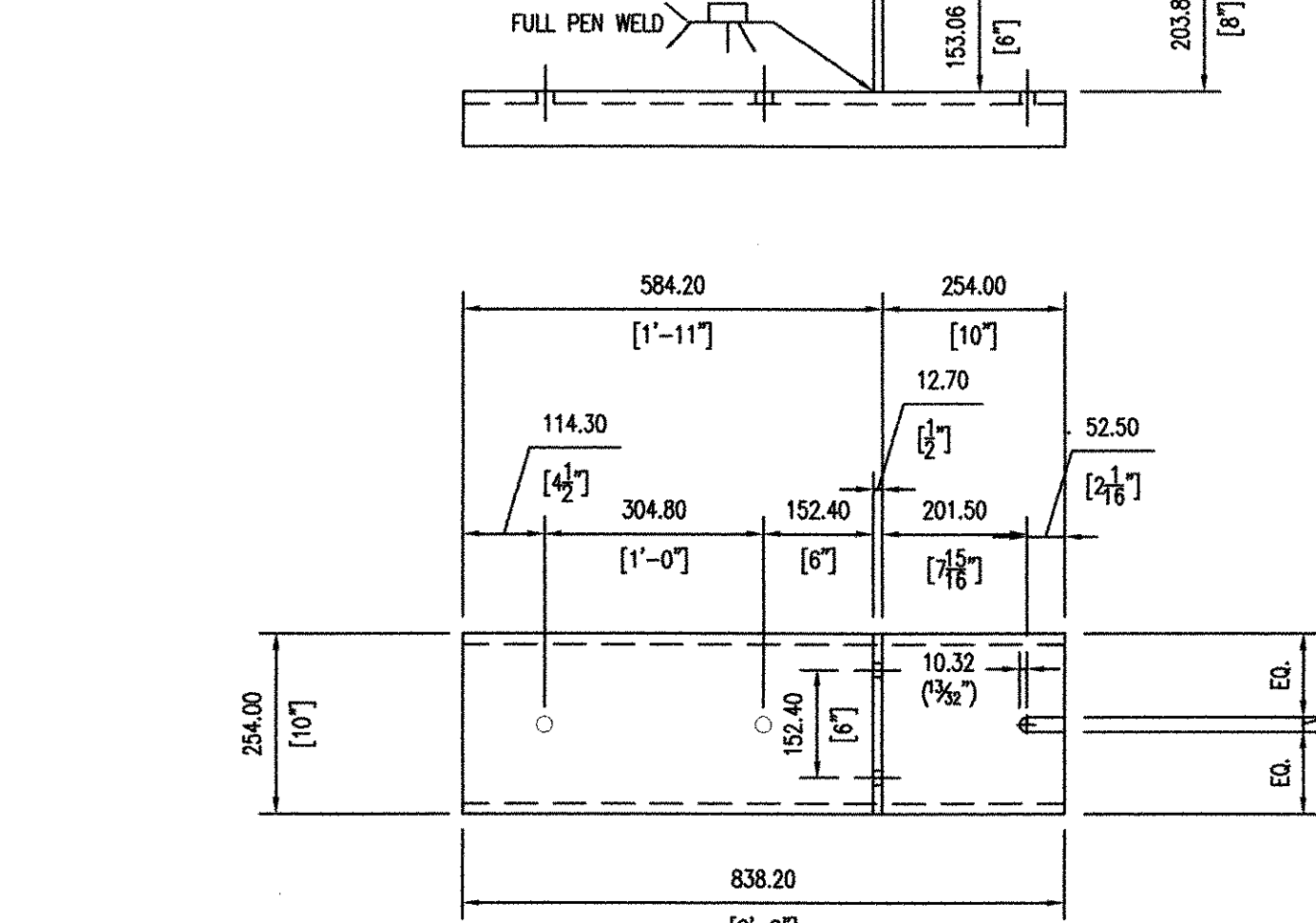
NOTE: ALL QUANTITIES BY VERMONT GAS SYSTEMS



2 SECTION AT MSE WALL
SCALE: 1:25



CHANNEL DETAIL



BRACE ANGLE DETAIL

3 GAS LINE SUPPORT SECTION
SCALE: 1:10

1) ALL SUPPORT COMPONENTS TO BE STAINLESS STEEL UNLESS NOTED OTHERWISE.

INFORMATION ON THIS SHEET SHALL ONLY BE USED FOR THE INSTALLATION OF THE NATURAL GAS LINE OVER THE BRIDGE. ALL OTHER INFORMATION SHOULD NOT BE RELIED UPON FOR PURPOSES UNRELATED TO THE GAS LINES.

**STATE OF VERMONT
AGENCY OF TRANSPORTATION**

Town Of COLCHESTER-SOUTH BURLINGTON	Bridge No. 6
Highway No. TH 4/3	Log Sta. Surv. Sta.
TH 4/3 OVER WINOOSKI RIVER AND N.E.C.R.	
BRIDGE GAS LINE SUPPORTS	
Designed By KNIGHT CONSULTING	Drawn By A. RICHER
Checked By E. GODDARD/B. EVANS	Date 04/05
Bridge Design Supervisor	
PROJECT COLCHESTER-SOUTH BURLINGTON	PROJECT NO. BRM 5600 (6) S
I.G.C. Info.	
Bridge Sheet No. GAS LINE SUPPORTS - S3 Sheet 87 of 124	

KCE S: V01271A S3