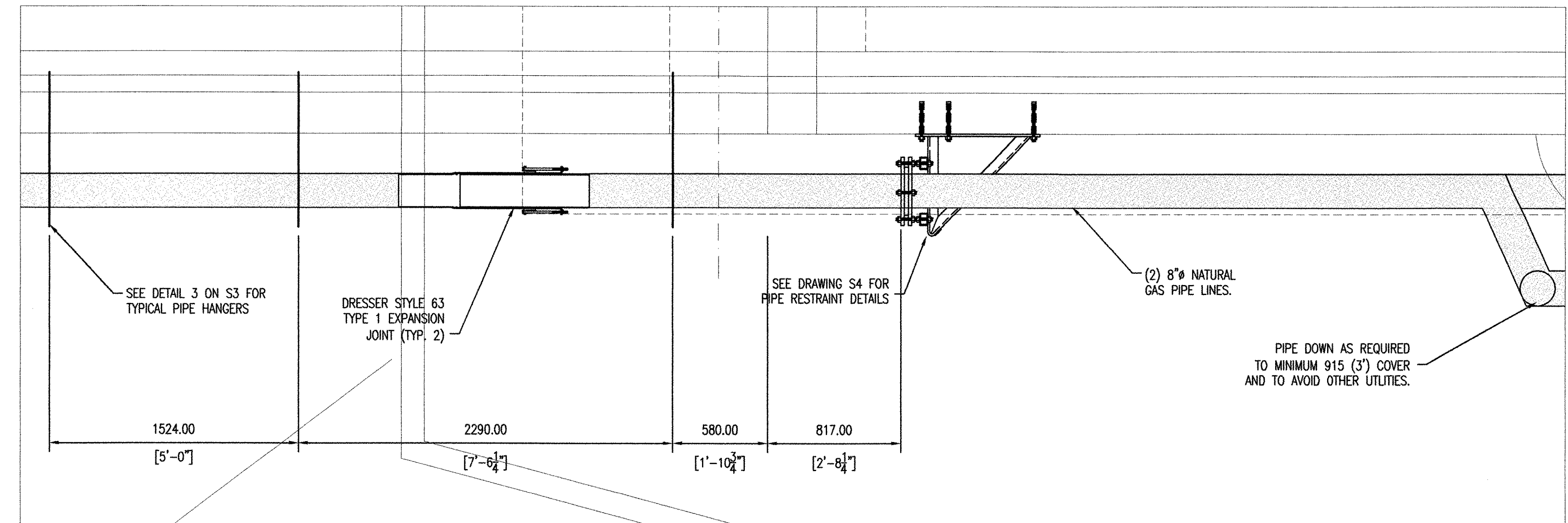
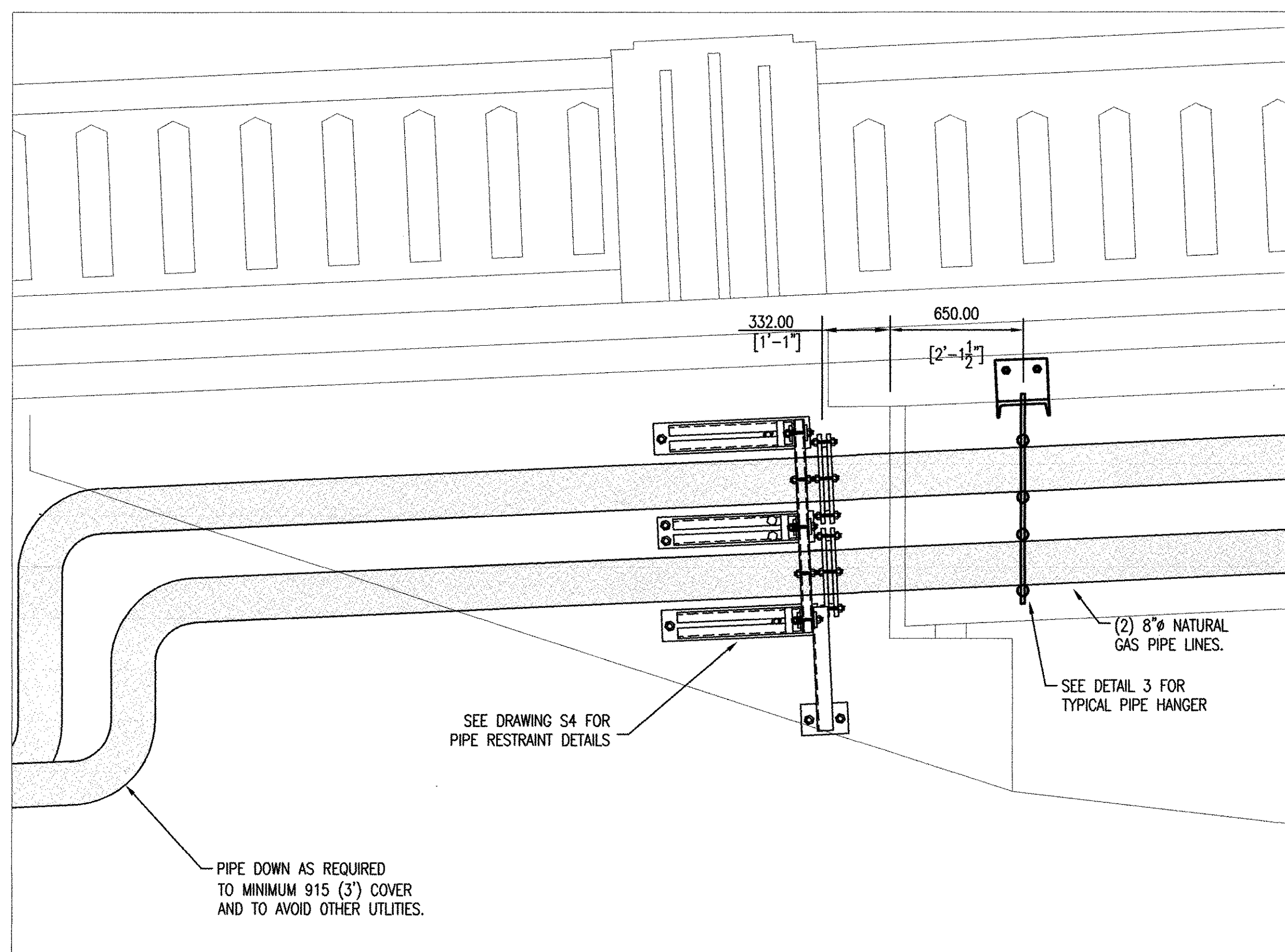


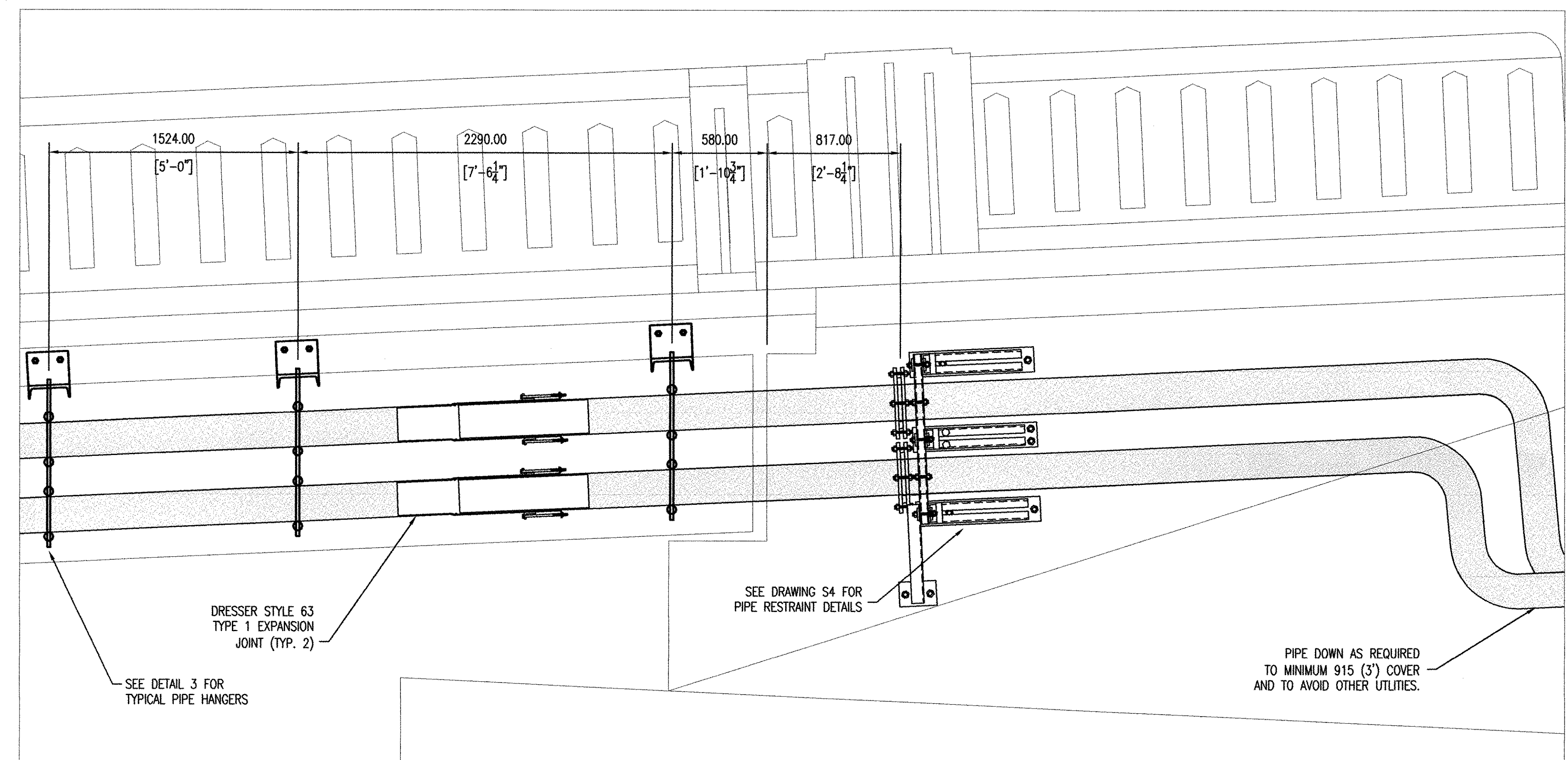
PARTIAL PLAN – SOUTH ABUTMENT
SCALE: 1:20



PARTIAL PLAN – NORTH ABUTMENT
SCALE: 1:20



PARTIAL ELEVATION – SOUTH ABUTMENT
SCALE: 1:20



PARTIAL ELEVATION – NORTH ABUTMENT
SCALE: 1:20

NOTE: EXPANSION JOINT SHALL BE CENTERED IN ITS LIMIT OF TRAVEL WHEN THE PIPE TEMPERATURE IS BETWEEN 15° AND 27° CELSIUS (60° - 80° FAHRENHEIT.) (PREFERABLY DONE IN EARLY MORNING)

INFORMATION ON THIS SHEET SHALL ONLY BE USED FOR THE INSTALLATION OF THE NATURAL GAS LINE OVER THE BRIDGE. ALL OTHER INFORMATION SHOULD NOT BE RELIED UPON FOR PURPOSES UNRELATED TO THE GAS LINES.

STATE OF VERMONT AGENCY OF TRANSPORTATION	
Town Of COLCHESTER-SOUTH BURLINGTON	Bridge No. 6
Highway No. TH 4/3	Log Sta. Surv. Sta.
TH 4/3 OVER WINOOSKI RIVER AND N.E.C.R.	
BRIDGE GAS LINE SUPPORTS	
Designed By KNIGHT CONSULTING	Drawn By A. RICHER
Checked By E. GODDARD\B. EVANS	Date 04/05 Bridge Design Supervisor Date
PROJECT COLCHESTER-SOUTH BURLINGTON	PROJECT NO. BRM 5600 (6) S
I.G.C. Info.	
Bridge Sheet No. GAS LINE SUPPORTS - S2 Sheet 86 of 124	

KCE S:\01271A\51