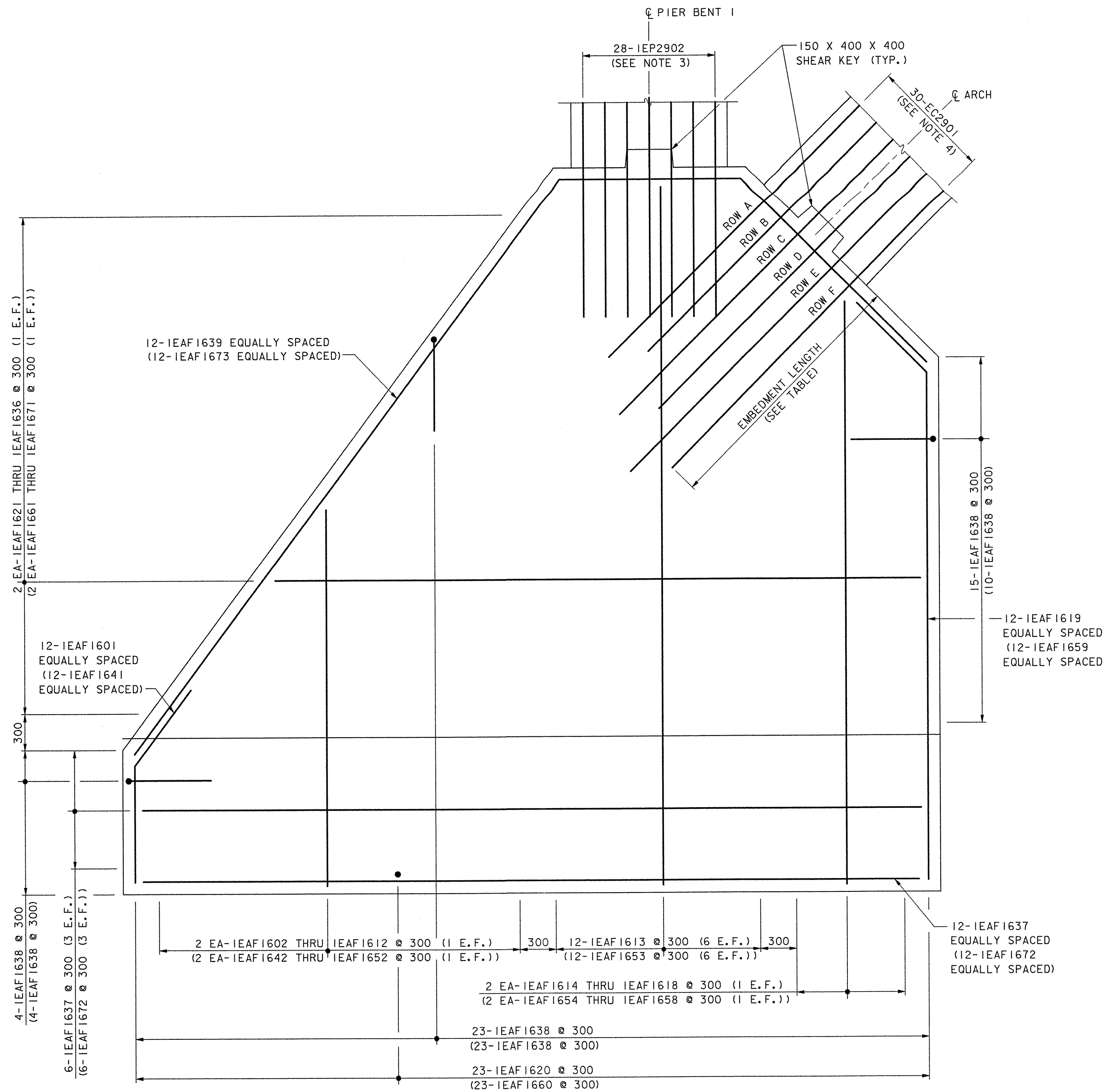


ROW	AF #1	AF #2
A1	1530	1930
A2	1930	1530
B	1665	2065
C	1800	2200
D	1935	2335
E	2070	2470 ▲
F1	2205	2605 ▲
F2	2605	2205 ▲

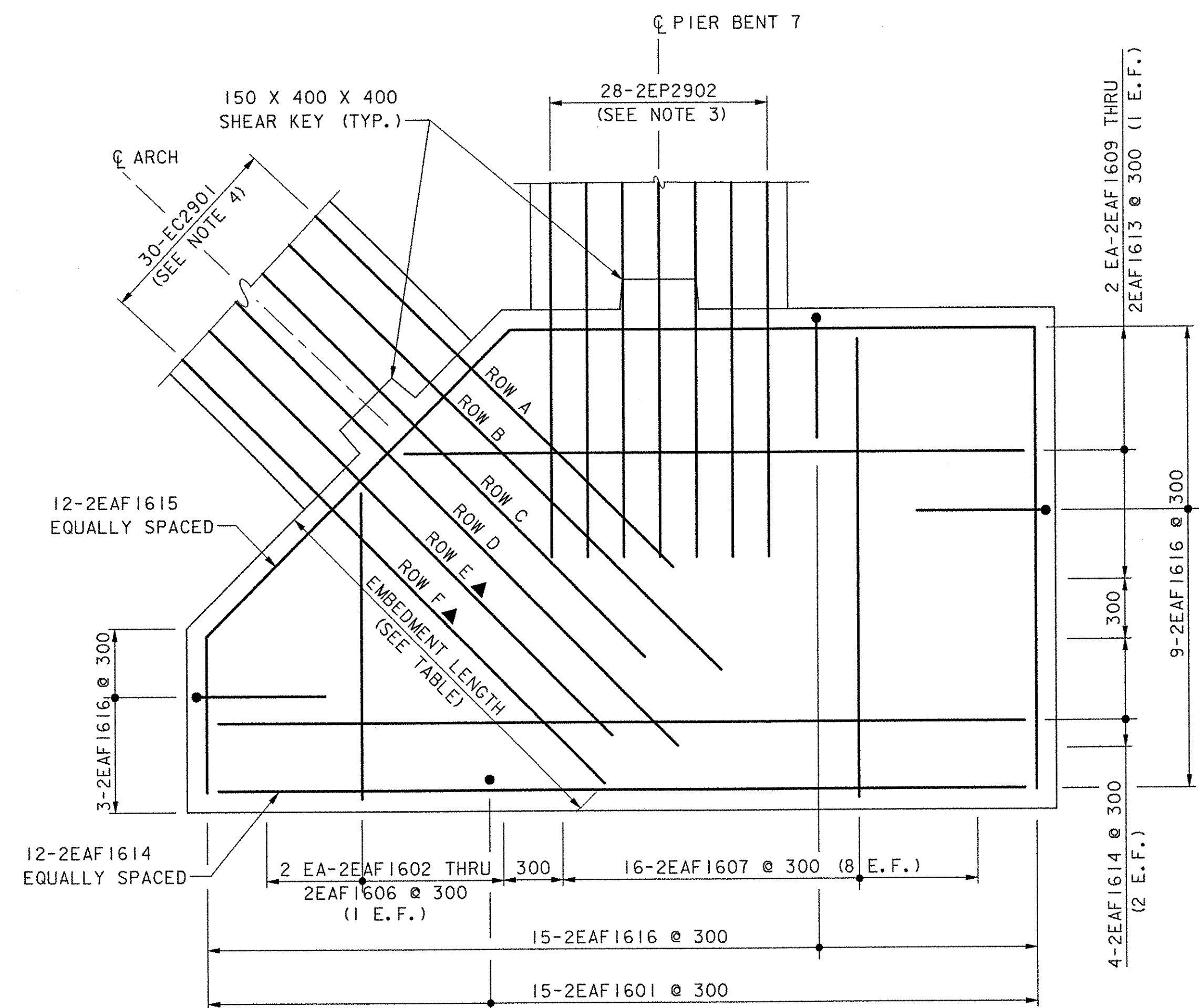
**ARCH FOUNDATION REINFORCING NOTES:**

- ELEVATION AT THE BOTTOM OF THE FOOTING IS APPROXIMATE. ACTUAL BOTTOM OF FOOTING ELEVATION MAY BE LOWER. ADD #16 BARS @ 300 TO ACCOMMODATE FOR DEEPER FOOTING WHERE NECESSARY. ALL COST WILL BE INCLUDED UNDER ITEM 507.17, EPOXY COATED REINFORCING STEEL.
- QUANTITIES FOR REBAR IN EACH ARCH FOUNDATION ARE LABELED PER FOOTING (2 EACH REQUIRED).
- SEE SHEET 71, SECTION D-D, FOR SPACING OF IEP2902 AND 7EP2902 BARS.
- SEE SHEET 74, SECTIONS A-A AND C-C, FOR STAGGERED ARRANGEMENT OF EC2901 BARS. SEE EMBEDMENT LENGTH TABLE FOR BAR EMBEDMENT INTO ARCH FOUNDATION.



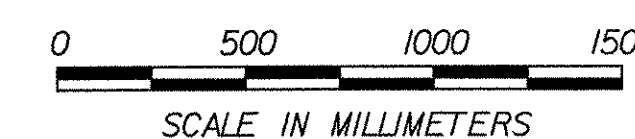
**ARCH FOUNDATION NO. 1 ELEVATION**

SCALE: 1:20  
(PIER BENT 1)  
SOUTHEAST ARCH FOUNDATION SHOWN,  
SOUTHWEST ARCH FOUNDATION SHOWN IN PARENTHESES



**ARCH FOUNDATION NO. 2 ELEVATION**

SCALE: 1:20  
(PIER BENT 7)



**REINFORCING KEY**

- E.F. = EACH FACE
- ▲ = CUT IN FIELD

**STATE OF VERMONT  
AGENCY OF TRANSPORTATION**

Town Of COLCHESTER-SOUTH BURLINGTON	Bridge No. 6
Highway No. TH 4/3	Log Sta.
Surv. Sta.	
TH 4/3 OVER WINOOSKI RIVER & N.E.C.R.	

**ARCH FOUNDATION REINFORCING**

Designed By W.M. MOSHER	Drawn By B.J. MASSE
Checked By K.G. KRETSCH	Bridge Design Supervisor S.M. GUNN
Date 4/05	Date 4/05

PROJECT COLCHESTER-SOUTH BURLINGTON	PROJECT NO. BRM 5600 (6) S C/2
-------------------------------------	--------------------------------

I.G.C. Info.	Bridge Sheet No. ZD139AFR	Sheet 76 of 124
--------------	---------------------------	-----------------

DATUM  
VERTICAL NAD 88  
HORIZONTAL NAD 83 (92)