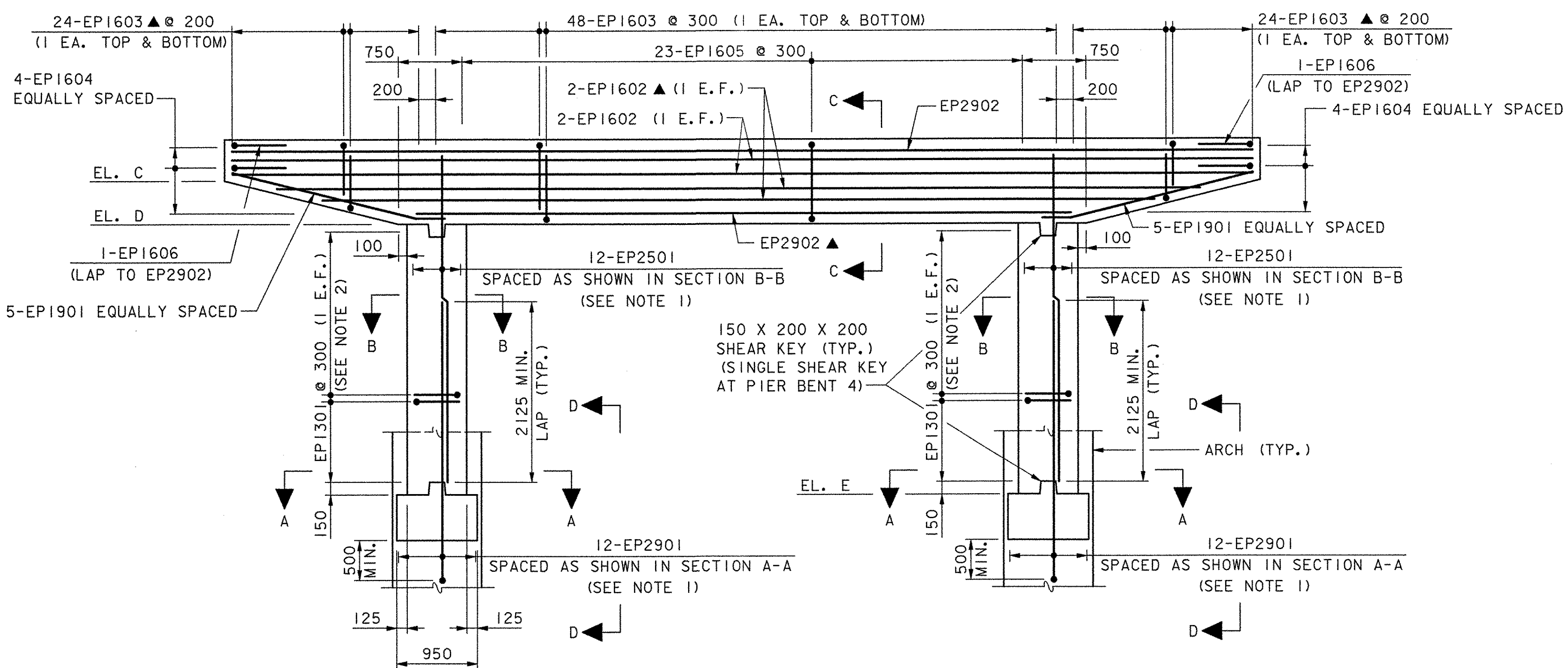
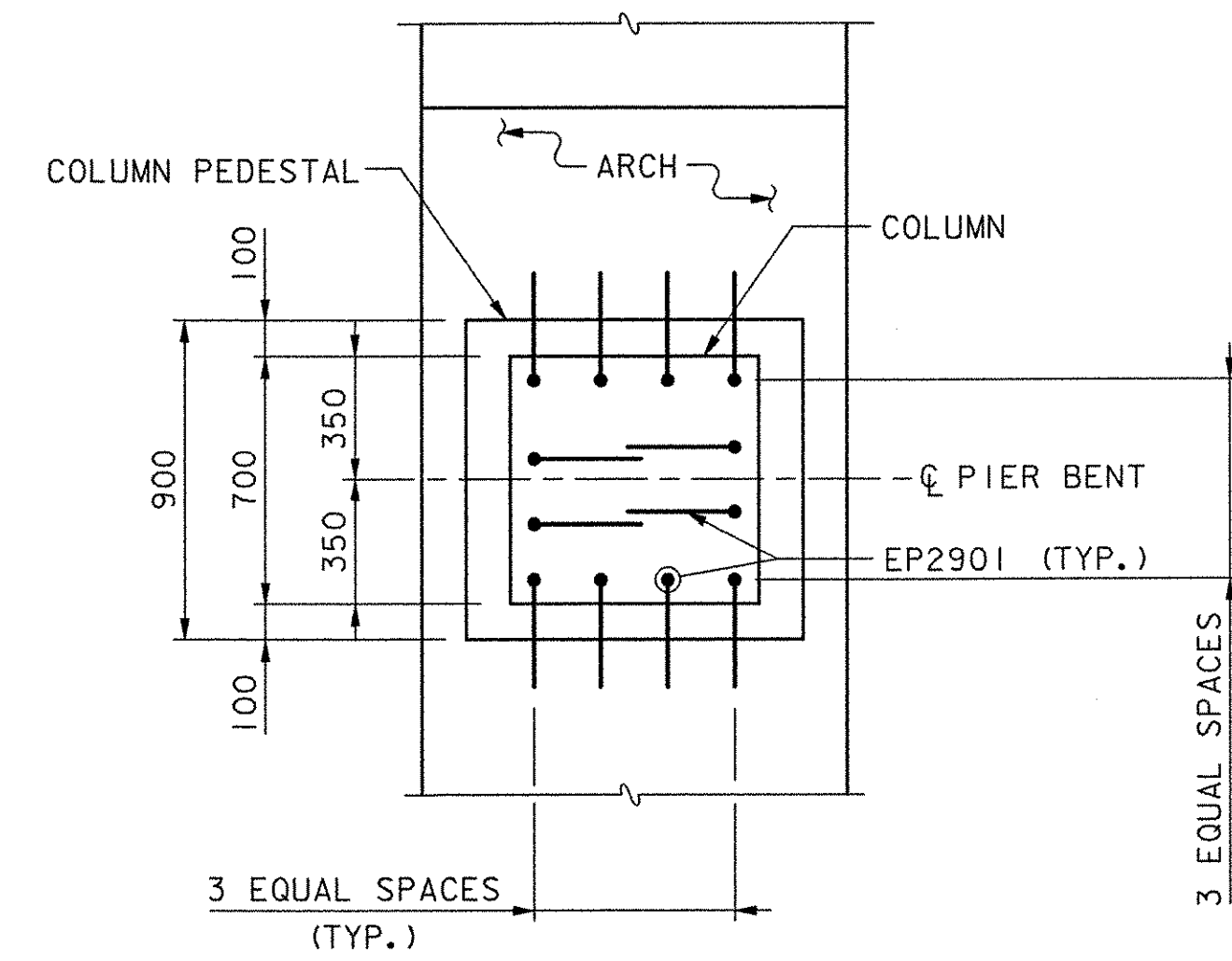


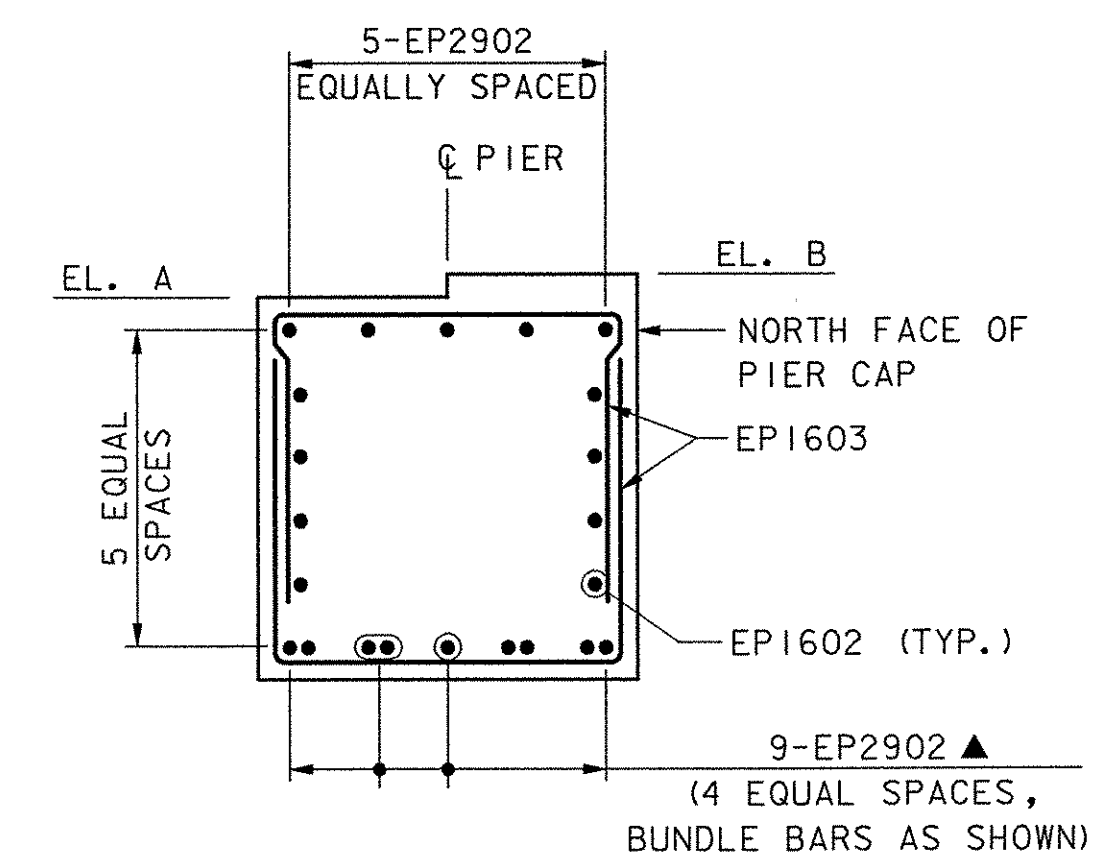
**PLAN**  
SCALE: 1:40



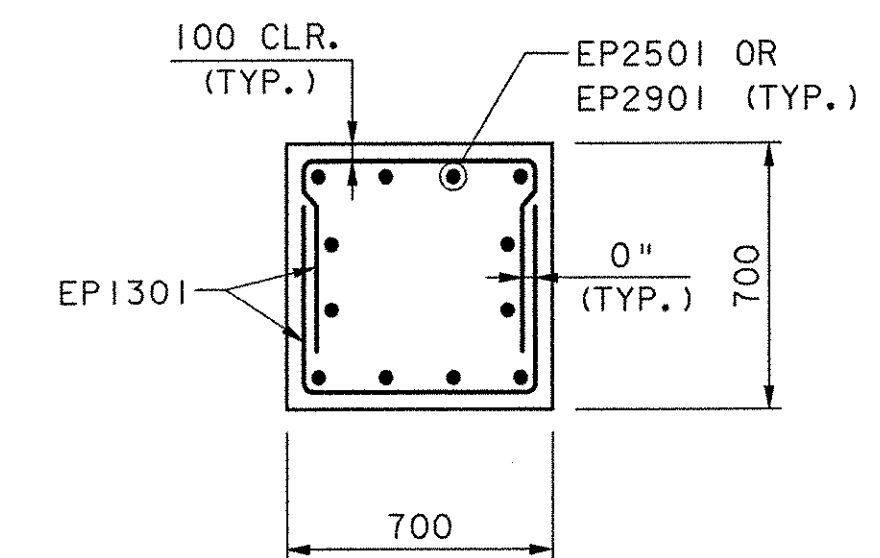
**ELEVATION**  
SCALE: 1:40  
(COLUMN HEIGHT N.T.S. SEE TABLE FOR DIMENSIONS)



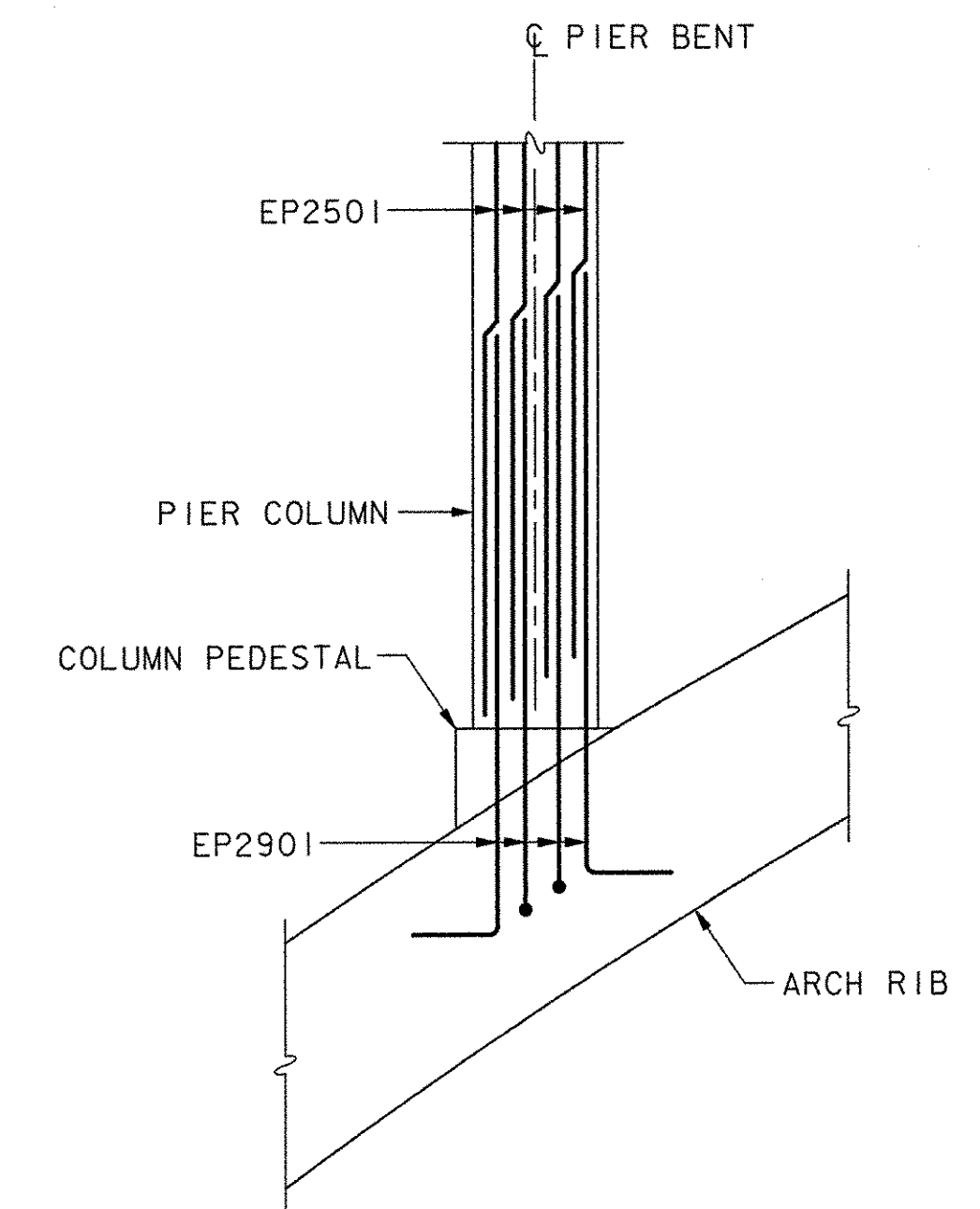
**SECTION A-A**  
SCALE: 1:20



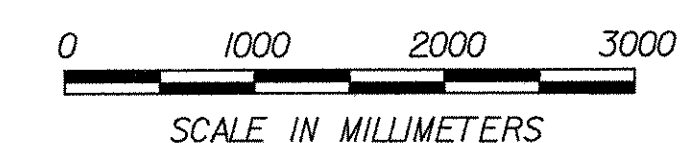
**SECTION C-C**  
SCALE: 1:20



**SECTION B-B**  
SCALE: 1:20



**VIEW D-D**  
PIER COLUMN NO. 2 SHOWN, NOS. 3-6 SIMILAR  
SCALE: 1:40



**NOTES:**

1. BAR EP2501 OCCURS AT PIERS 2 AND 6 ONLY. BAR EP2901 EXTENDS INTO PIER CAP AT PIERS 3, 4, & 5.
2. SEE REINFORCING STEEL SCHEDULE, SHEETS 82-83 FOR EP1301 QUANTITIES. ONE HALF OF THE TOTAL QUANTITY OF BARS SHALL BE PLACED IN EACH COLUMN.
3. PIER PREFIX FOR REINFORCING IS OMITTED FOR CLARITY. PREFIX IS CALLED OUT ON REINFORCING STEEL SCHEDULE.

**REINFORCING KEY**

- E. F. = EACH FACE
- N. S. = NEAR SIDE
- F. S. = FAR SIDE
- ▲ = CUT IN FIELD

PIER BENT	STATION	ELEVATIONS				
		A	B	C	D	E
2	10+335.75	80.670	80.692	80.170	79.670	75.997
3	10+342.50	80.973	80.996	80.473	79.973	78.992
4	10+349.25	81.277	81.300	80.777	80.277	80.277
5	10+356.00	81.581	81.603	81.081	80.581	78.992
6	10+362.75	81.885	81.907	81.385	80.885	75.997

**STATE OF VERMONT  
AGENCY OF TRANSPORTATION**

Town Of COLCHESTER-SOUTH BURLINGTON	Bridge No. 6
Highway No. TH 4/3	Log Sta.
	Surv. Sta.
TH 4/3 OVER WINOOSKI RIVER & N.E.C.R.	
<b>PIER BENTS 2 - 6 PLAN &amp; ELEVATION</b>	
Designed By W. M. MOSHER	Drawn By B. J. MASSE
Checked By K. G. KRETSCH	Date 4/05
	Bridge Design Supervisor S. M. GUNN
PROJECT COLCHESTER-SOUTH BURLINGTON	PROJECT NO. BRM 5600 (6) S C/2
I.G.C. Info.	
Bridge Sheet No. ZD139P2-6	Sheet 72 of 124

DATUM  
VERTICAL NAVD 88  
HORIZONTAL NAD 83 (92)