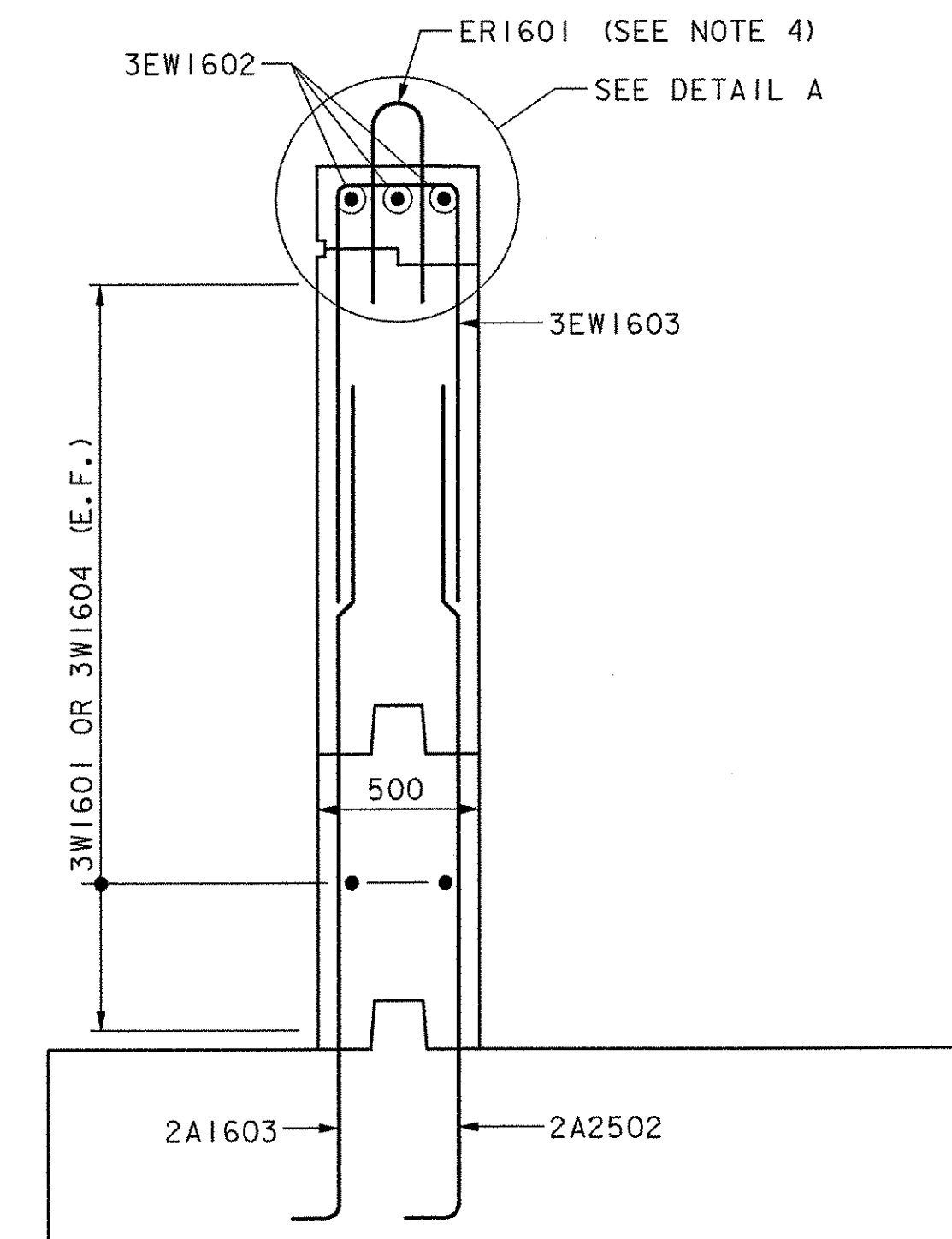
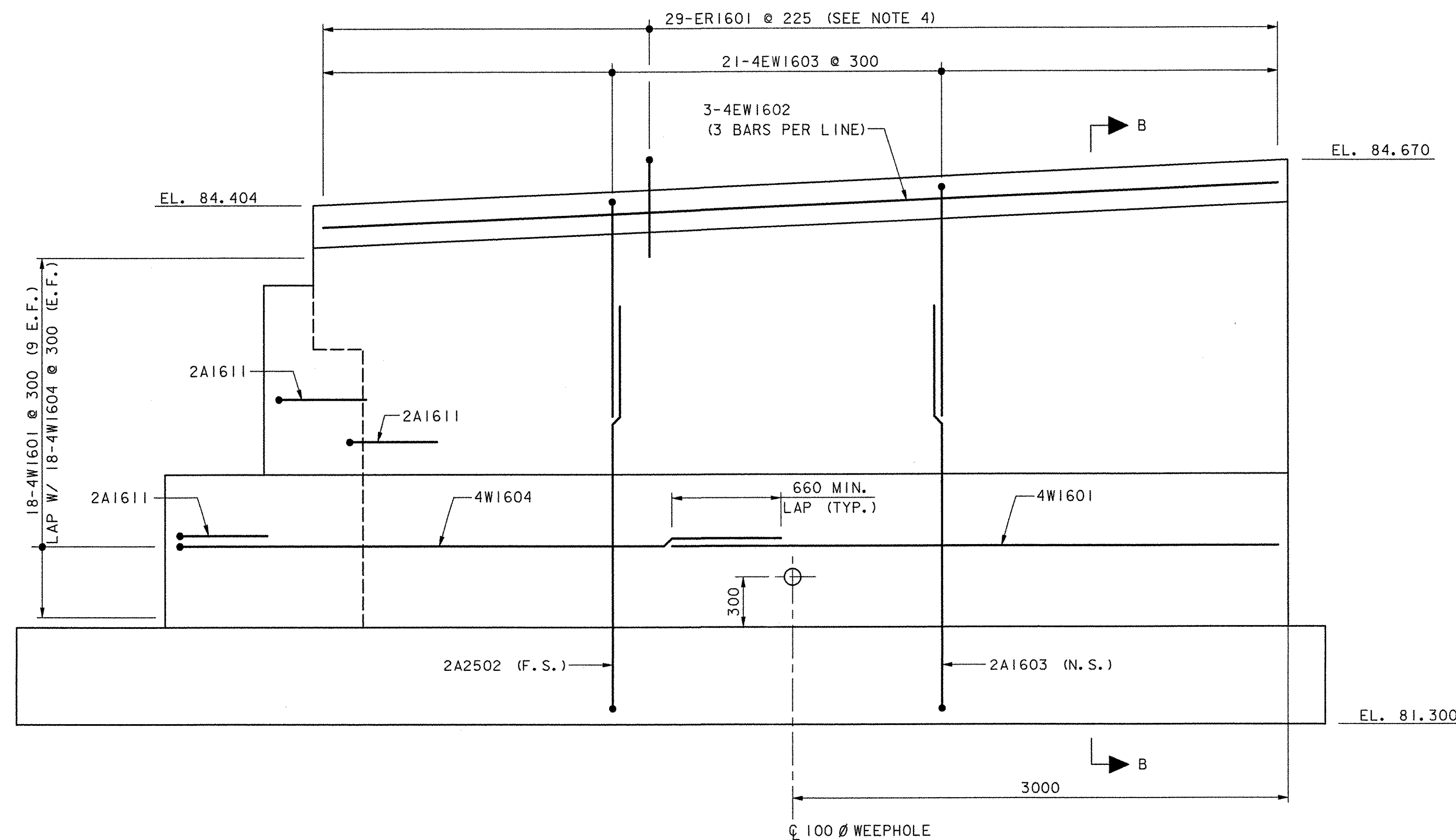


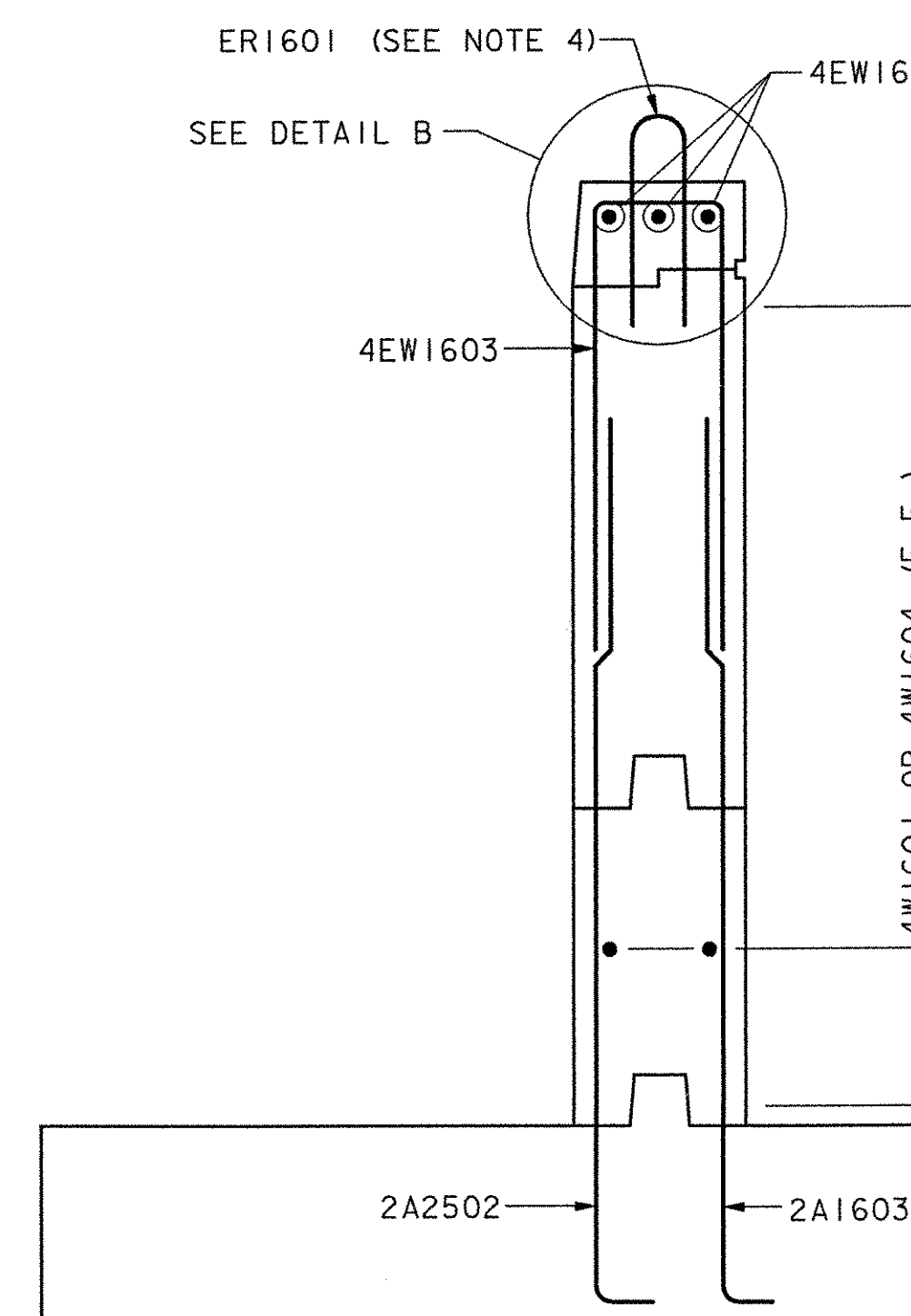
WINGWALL NO. 3 ELEVATION
SCALE: 1:20



SECTION A-A
SCALE: 1:20



WINGWALL NO. 4 ELEVATION
SCALE: 1:20



SECTION B-B
SCALE: 1:20

REINFORCING KEY

E.F. = EACH FACE
N.S. = NEAR SIDE
F.S. = FAR SIDE

NOTES:

1. ALL FOOTING REINFORCING NOT SHOWN FOR CLARITY.
2. SEE CONCRETE BRIDGE RAIL DETAILS ON SHEETS 79-81 FOR BAR ER1601. ALL COSTS FOR REINFORCING BARS IN CONCRETE BRIDGE RAIL SHALL BE INCLUDED IN ITEM 525.50, CAST-IN-PLACE CONCRETE BRIDGE RAIL.
3. SEE SHEET 67 FOR DETAILS A AND B.
4. QUANTITIES FOR REINFORCING BARS IN CONCRETE BRIDGE RAIL ARE NOT INCLUDED IN THE REINFORCING STEEL SCHEDULE (SEE NOTE 2).

**STATE OF VERMONT
AGENCY OF TRANSPORTATION**

Town Of COLCHESTER-SOUTH BURLINGTON	Bridge No. 6
Highway No. TH 4/3	Log Sta.
	Surv. Sta.
TH 4/3 OVER WINOOSKI RIVER & N.E.C.R.	
ABUTMENT NO. 2 WINGWALLS	
Designed By J. T. KLEIN	Drawn By K. D. WENTWORTH
Checked By K. G. KRETSCH	Date 4/05
	Bridge Design Supervisor S. M. GUNN
	Date 4/05
PROJECT COLCHESTER-SOUTH BURLINGTON	PROJECT NO. BRM 5600 (6) S C/2
I.G.C. Info.	
Bridge Sheet No. ZD139WW2	Sheet 70 of 124

DATUM
VERTICAL NAVD 88
HORIZONTAL NAD 83 (92)

