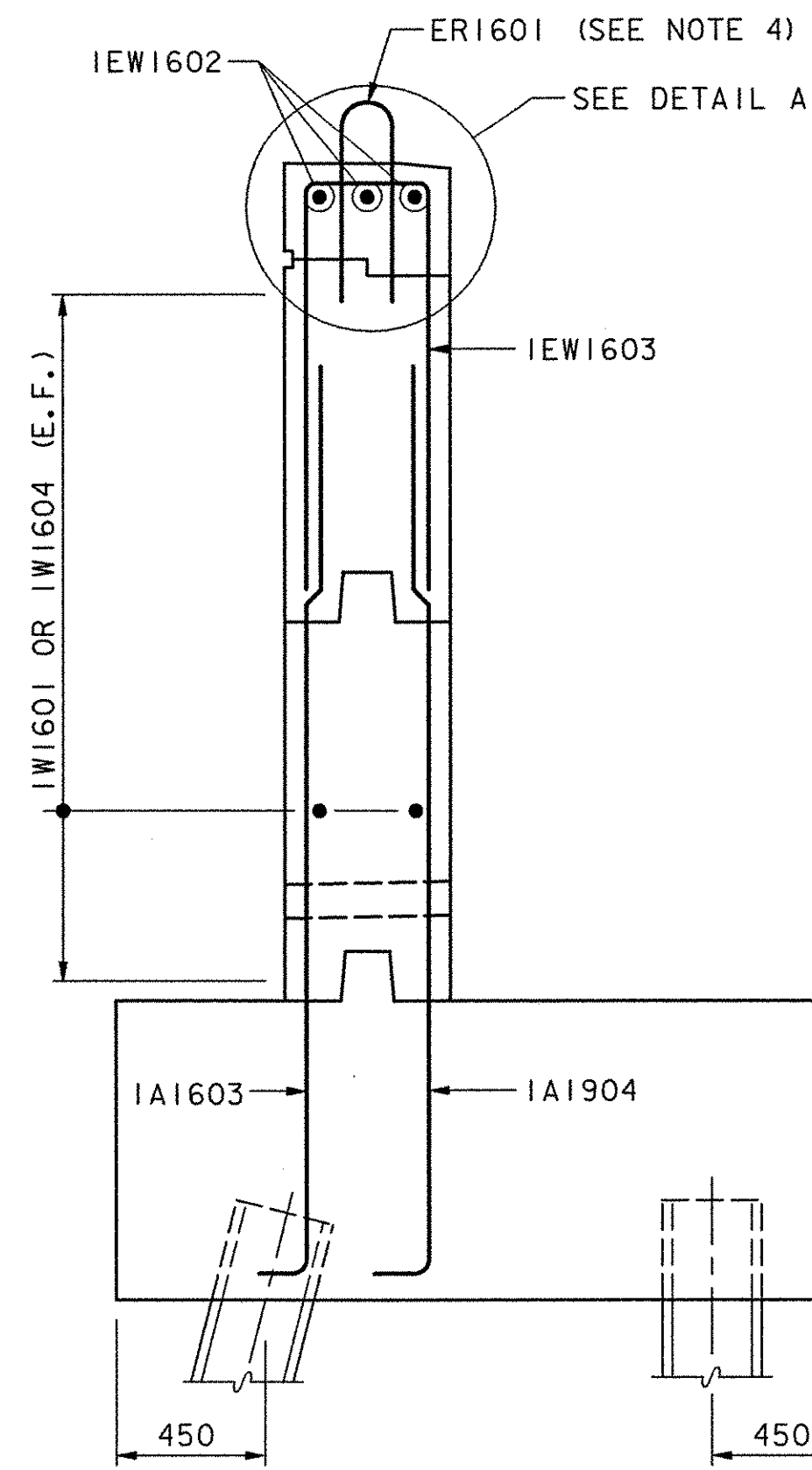
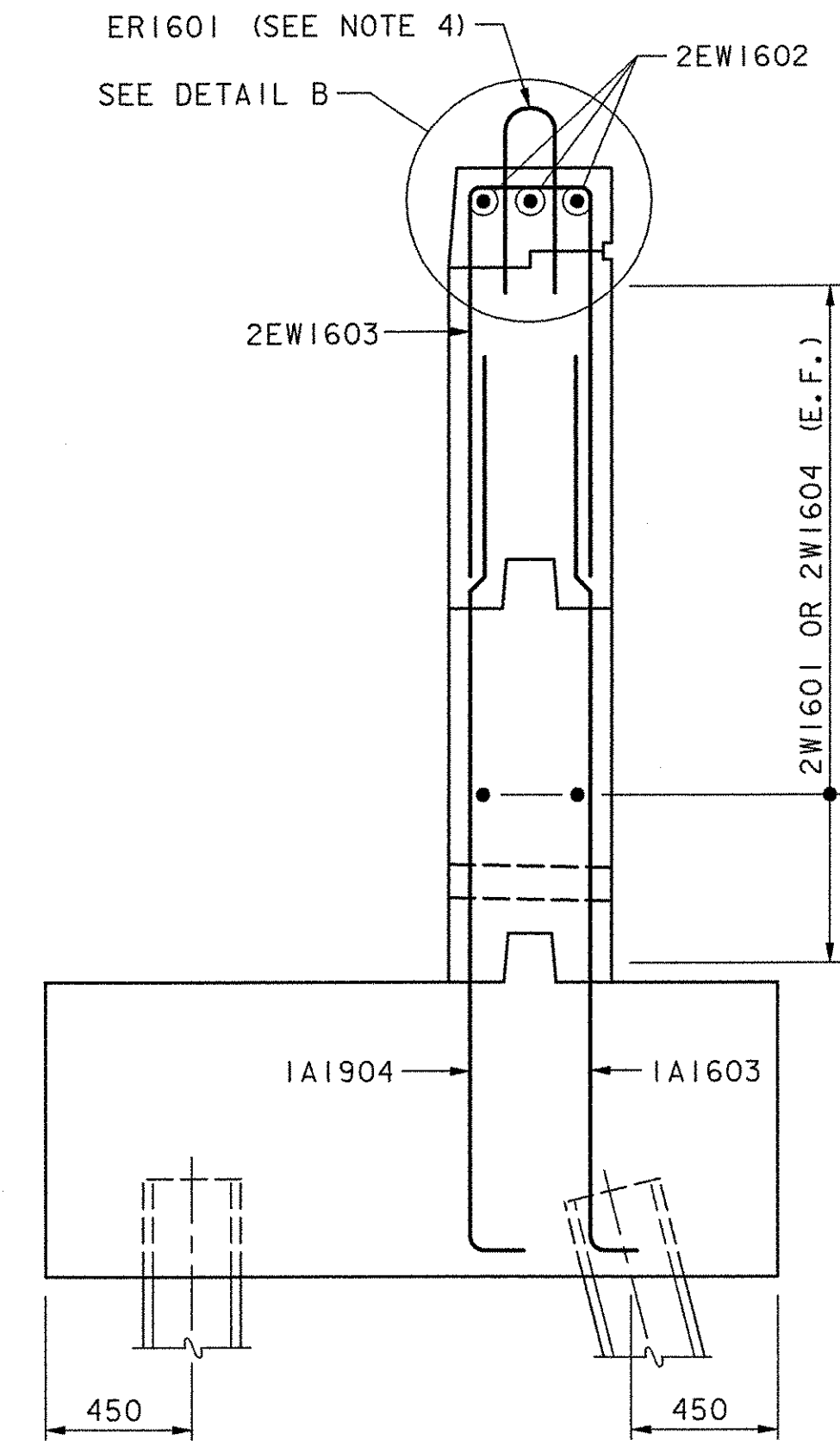


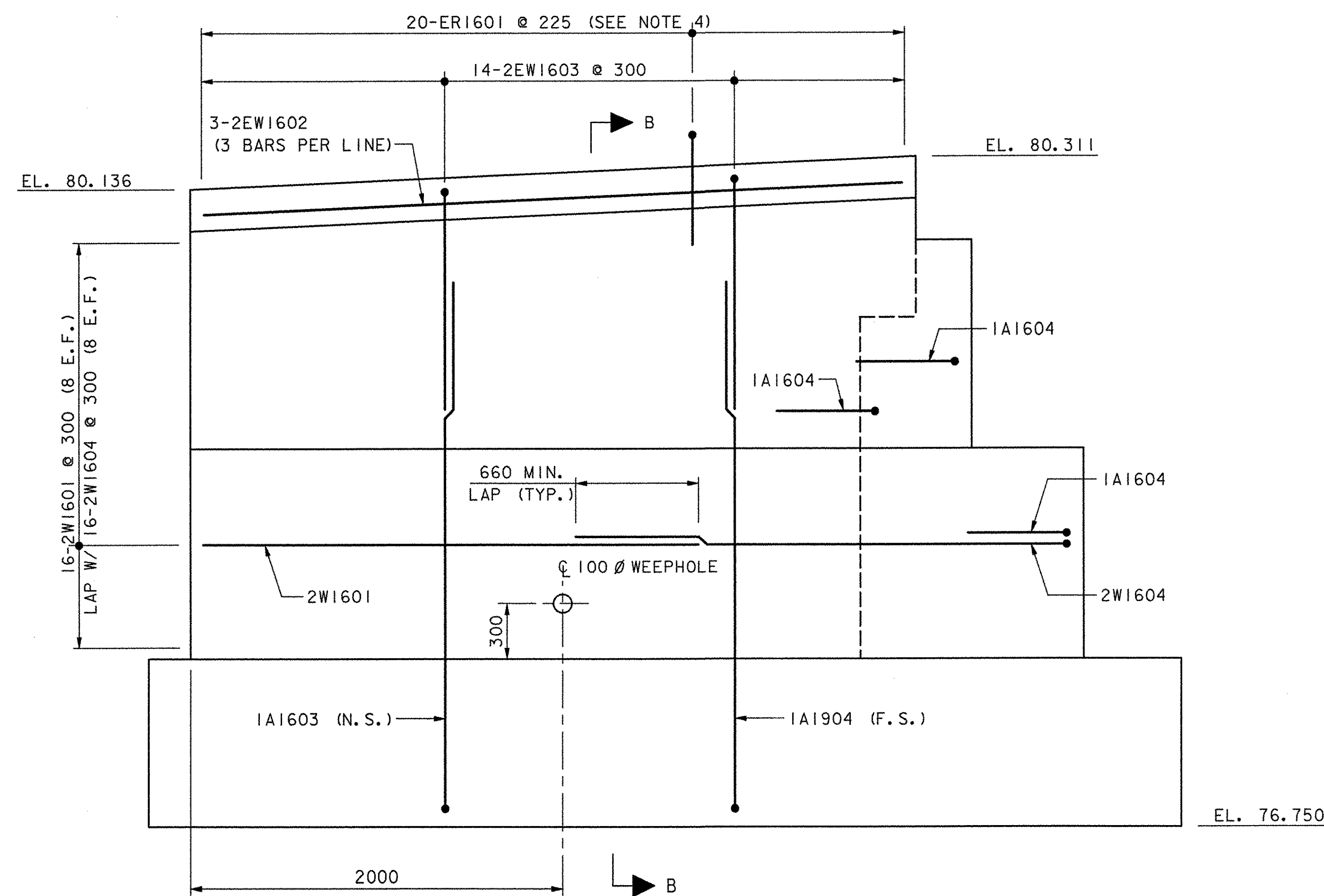
WINGWALL NO. 1 ELEVATION
 SCALE: 1:20



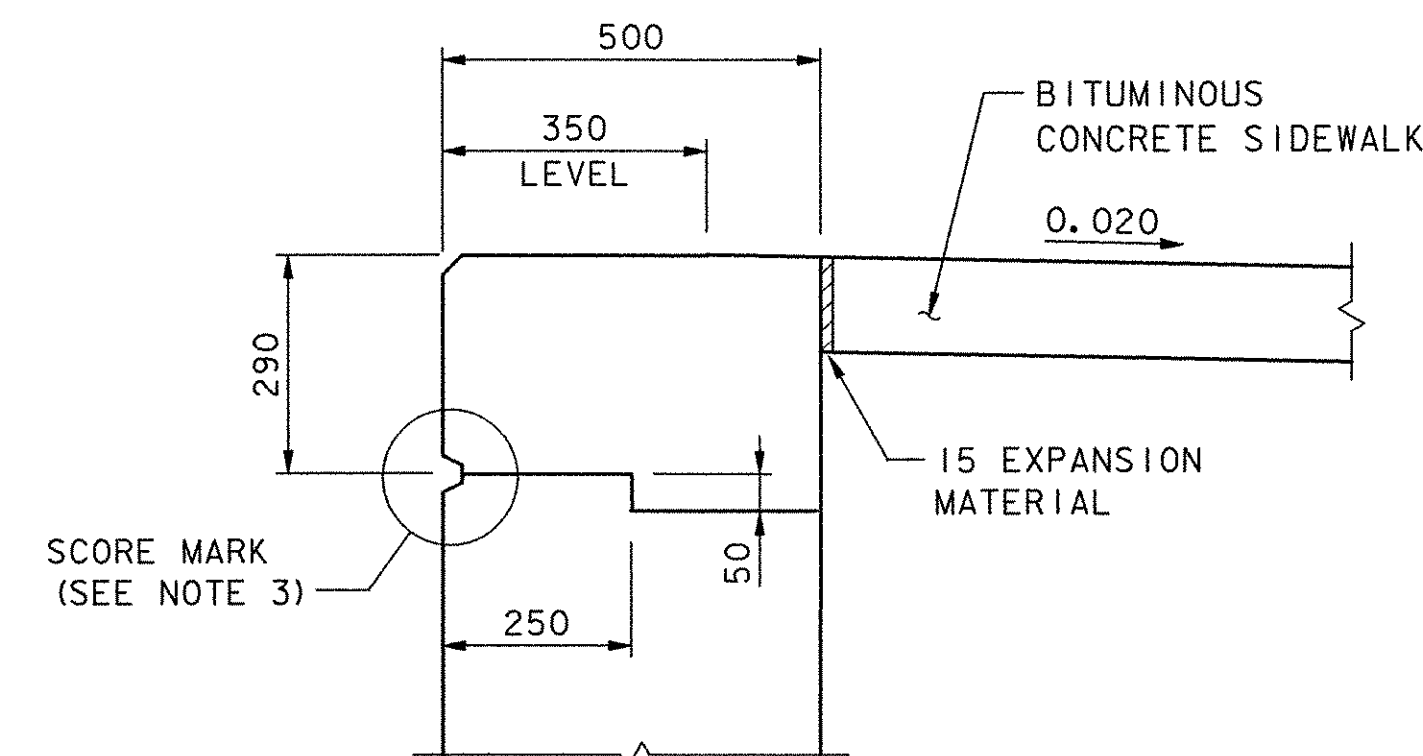
SECTION A-A
 SCALE: 1:20



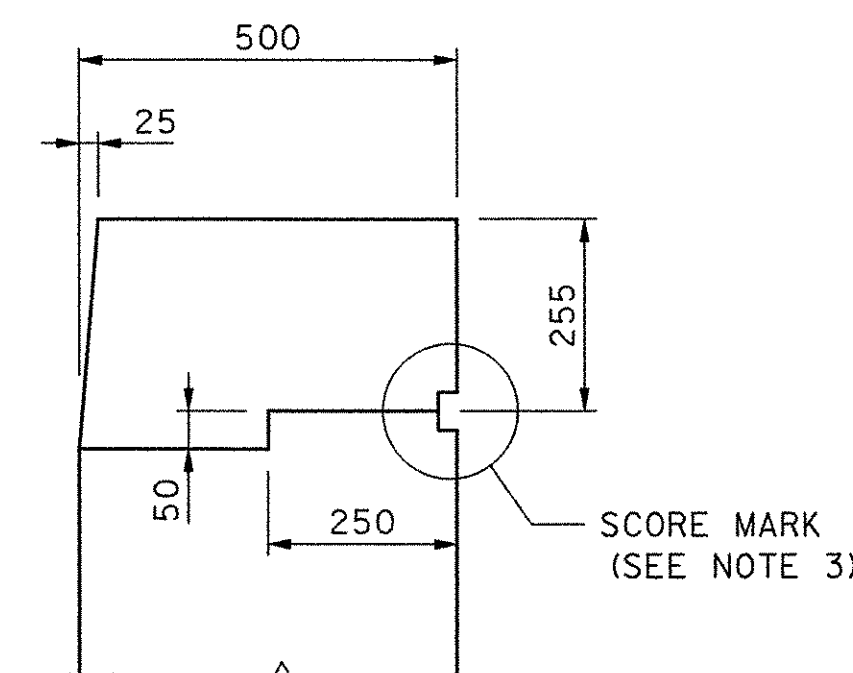
SECTION B-B
 SCALE: 1:20



WINGWALL NO. 2 ELEVATION
 SCALE: 1:20



DETAIL A
 (REINFORCING NOT SHOWN FOR CLARITY)
 SCALE: 1:10



DETAIL B
 (REINFORCING NOT SHOWN FOR CLARITY)
 SCALE: 1:10



REINFORCING KEY
 E.F. = EACH FACE
 N.S. = NEAR SIDE
 F.S. = FAR SIDE

NOTES:

- ALL FOOTING REINFORCING NOT SHOWN FOR CLARITY.
- SEE CONCRETE BRIDGE RAIL DETAILS ON SHEETS 79-81 FOR BAR ER1601. ALL COSTS FOR REINFORCING BARS IN CONCRETE BRIDGE RAIL SHALL BE INCLUDED IN ITEM 525.50, CAST-IN-PLACE CONCRETE BRIDGE RAIL.
- SEE SHEET 55 FOR SCORE MARK DETAIL.
- QUANTITIES FOR REINFORCING BARS IN CONCRETE BRIDGE RAIL ARE NOT INCLUDED IN THE REINFORCING STEEL SCHEDULE (SEE NOTE 2).

**STATE OF VERMONT
 AGENCY OF TRANSPORTATION**

Town Of COLCHESTER-SOUTH BURLINGTON	Bridge No. 6
Highway No. TH 4/3	Log Sta. Surv. Sta.
TH 4/3 OVER WINOOSKI RIVER & N.E.C.R.	
ABUTMENT NO.1 WINGWALLS	
Designed By J. T. KLEIN	Drawn By K. D. WENTWORTH
Checked By K. G. KRETSCH	Date 4/05
	Bridge Design Supervisor S. M. GUNN
PROJECT COLCHESTER-SOUTH BURLINGTON	Date 4/05
PROJECT NO. BRM 5600 (6) S C/2	
I.G.C. Info.	
Bridge Sheet No. ZD139WWI	Sheet 67 of 124

DATUM
 VERTICAL NAVD 88
 HORIZONTAL NAD 83 (92)

