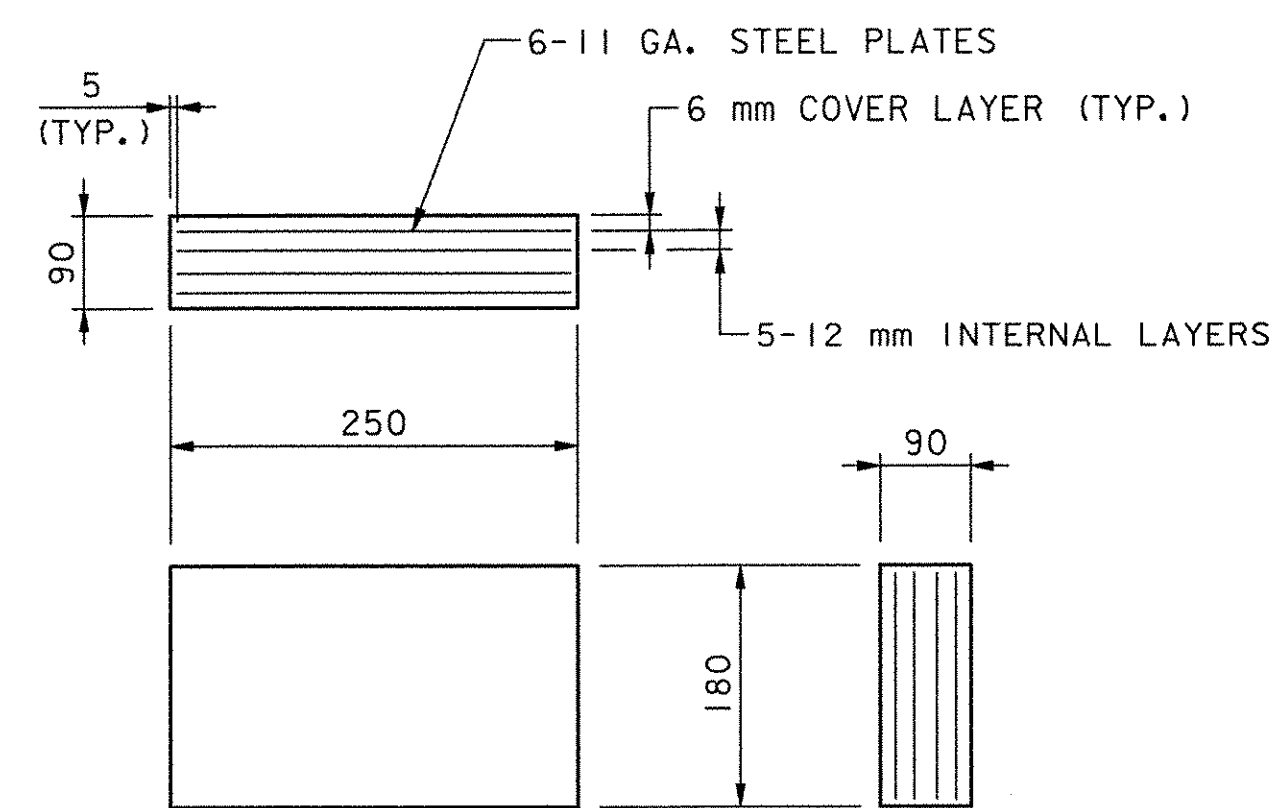


BEARING PLACEMENT PLAN

SCALE: 1:20



ELASTOMERIC BEARING DETAIL

(TWO EACH PER BOX BEAM)
SCALE: 1:5



STEEL REINFORCED ELASTOMERIC BEARINGS

ELASTOMERIC BEARING NOTES:

1. ALL COST FOR BOX BEAM ELASTOMERIC BEARINGS SHALL BE PAID UNDER ITEM 531.10, BEARING DEVICE ASSEMBLY (STEEL REINFORCED ELASTOMERIC) AND ALL COST FOR SOLID SLAB ELASTOMERIC PADS SHALL BE PAID AS ITEM 531.10, BEARING DEVICE ASSEMBLY (ELASTOMERIC).
2. ALTERNATE CONFIGURATIONS FOR ELASTOMERIC BEARINGS MAY BE SUBMITTED FOR APPROVAL IN ACCORDANCE WITH SECTION 105.03. ANY ALTERNATE BEARING SUBMITTED SHALL BE DESIGNED AND CERTIFIED TO MEET THE LOADS AND CRITERIA SHOWN ON THIS SHEET AND MAINTAIN THE ANCHORAGE SYSTEM SHOWN. THE BEARINGS SHALL BE DESIGNED ACCORDING TO AASHTO "STANDARD SPECIFICATIONS FOR HIGHWAY BRIDGES" 2002 EDITION AND ITS LATEST REVISIONS.
3. THE BEARING SHAPE FACTOR SHALL BE BETWEEN 4.0 AND 12.0.
4. ALL STEEL PLATES BETWEEN LAYERS OF ELASTOMERIC SHALL CONFORM TO ASTM A570/A570M GR. 250 STEEL. NO FABRIC REINFORCEMENT WILL BE PERMITTED.
5. STEEL REINFORCED ELASTOMERIC BEARINGS SHALL HAVE A 5 mm EDGE SEAL OF ELASTOMERIC INTEGRAL WITH THE BEARING OVER THE STEEL PLATES.
6. ALL MATERIALS AND FABRICATION SHALL BE PER AASHTO DIVISION II SECTION 18.2 AND AASHTO MATERIAL SPECIFICATION M251.

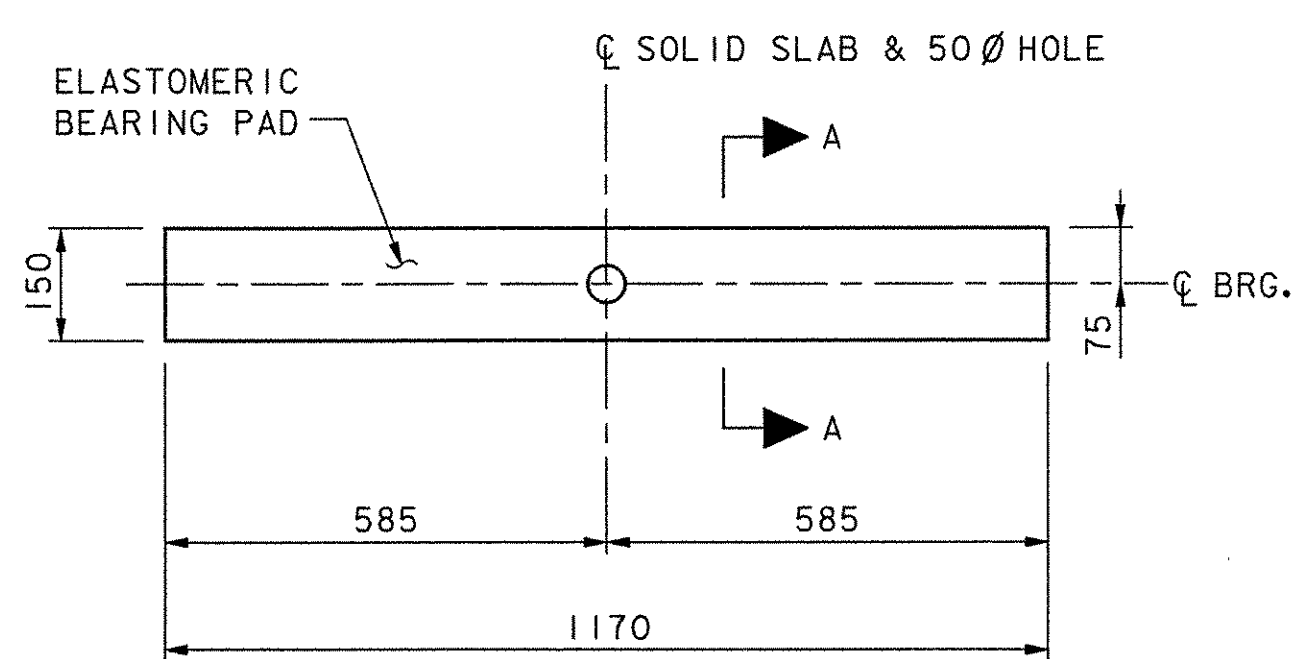
DESIGN CRITERIA:

DUROMETER: ELASTOMERIC 60
 TEMPERATURE RANGE: 27° C
 MAXIMUM BEARING STRESS: 7 MPa
 DESIGN ROTATION: 0.0101 RAD @ SPAN 1 & 0.0138 RAD @ SPAN 8

REACTION/BEAM:

	SPAN 1	SPANS 2-7	SPAN 8
DL	240	64	402
LL*	90	65	100

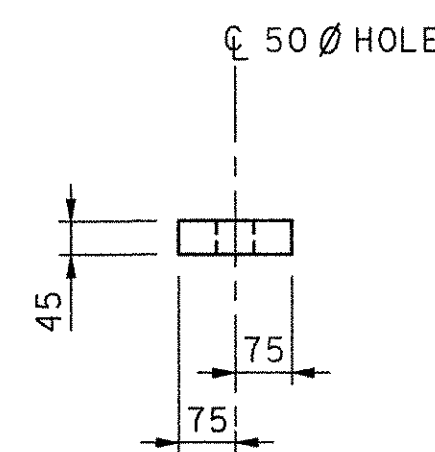
* DOES NOT INCLUDE IMPACT



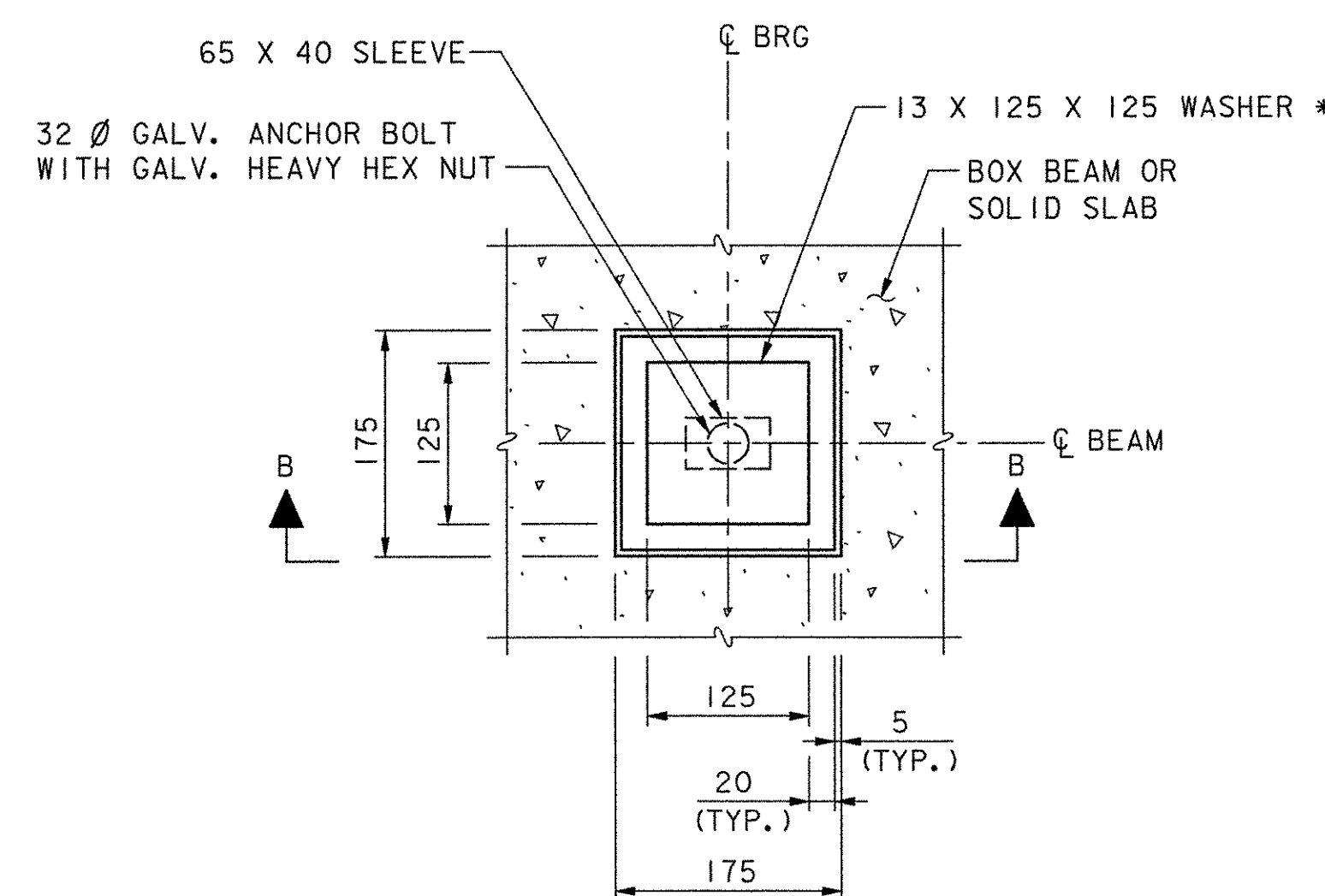
PLAN

ELASTOMERIC PAD DETAIL

SCALE: 1:10



SECTION A-A

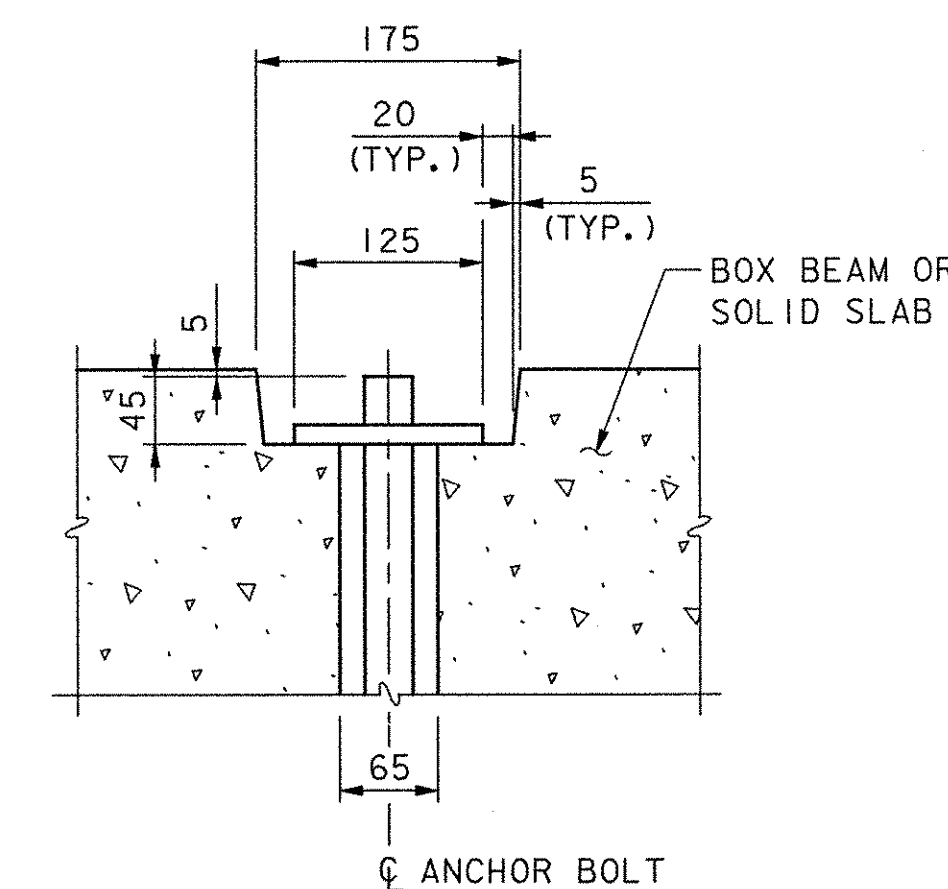
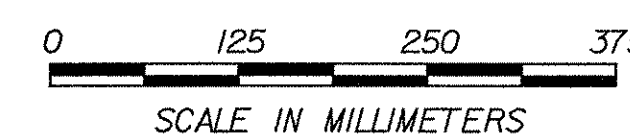


* EM-3 13 X 125 X 125 WASHER WITH 38 DIA. HOLE GALVANIZED.

ANCHOR BOLT DETAIL

ANCHOR BOLT DETAIL

SCALE: 1:5



SECTION B-B

**STATE OF VERMONT
AGENCY OF TRANSPORTATION**

Town Of COLCHESTER-SOUTH BURLINGTON	Bridge No. 6
Highway No. TH 4/3	Log Sta. Surv. Sta.
TH 4/3 OVER WINOOSKI RIVER & N.E.C.R.	

BEARING DETAILS

Designed By K.G. KRETSCH	Drawn By B.J. MASSE
Checked By M.A. COLGAN	Date 4/05
S.M. GUNN Date 4/05	

PROJECT COLCHESTER-SOUTH BURLINGTON	PROJECT NO. BRM 5600 (6) S C/2
-------------------------------------	--------------------------------

I.G.C. Info.	Bridge Sheet No. ZD139BG1	Sheet 63 of 124
--------------	---------------------------	-----------------

DATUM
VERTICAL NAVD 88
HORIZONTAL NAD 83 (92)

VHB Vanasse Hangen Brustlin, Inc.