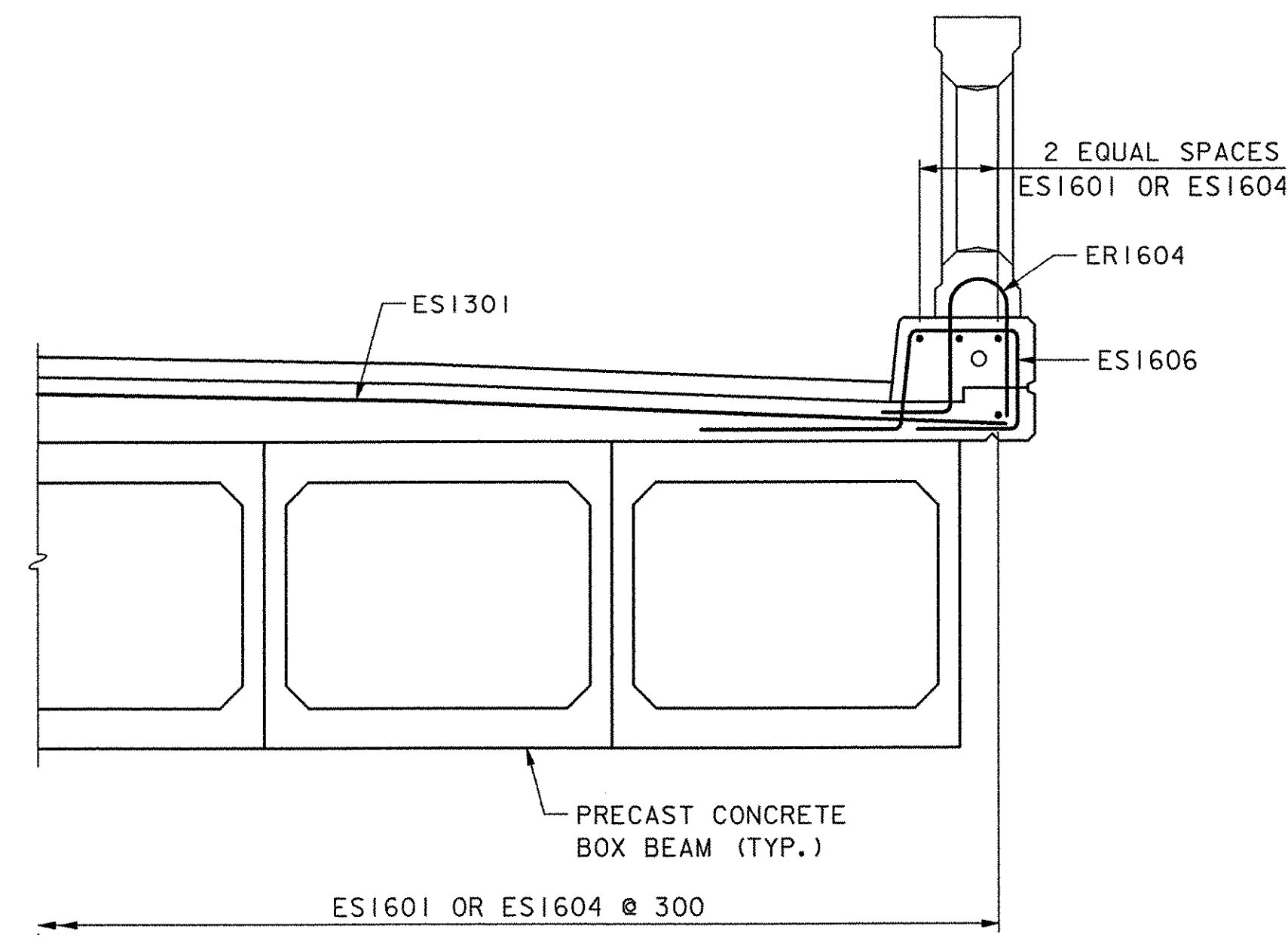
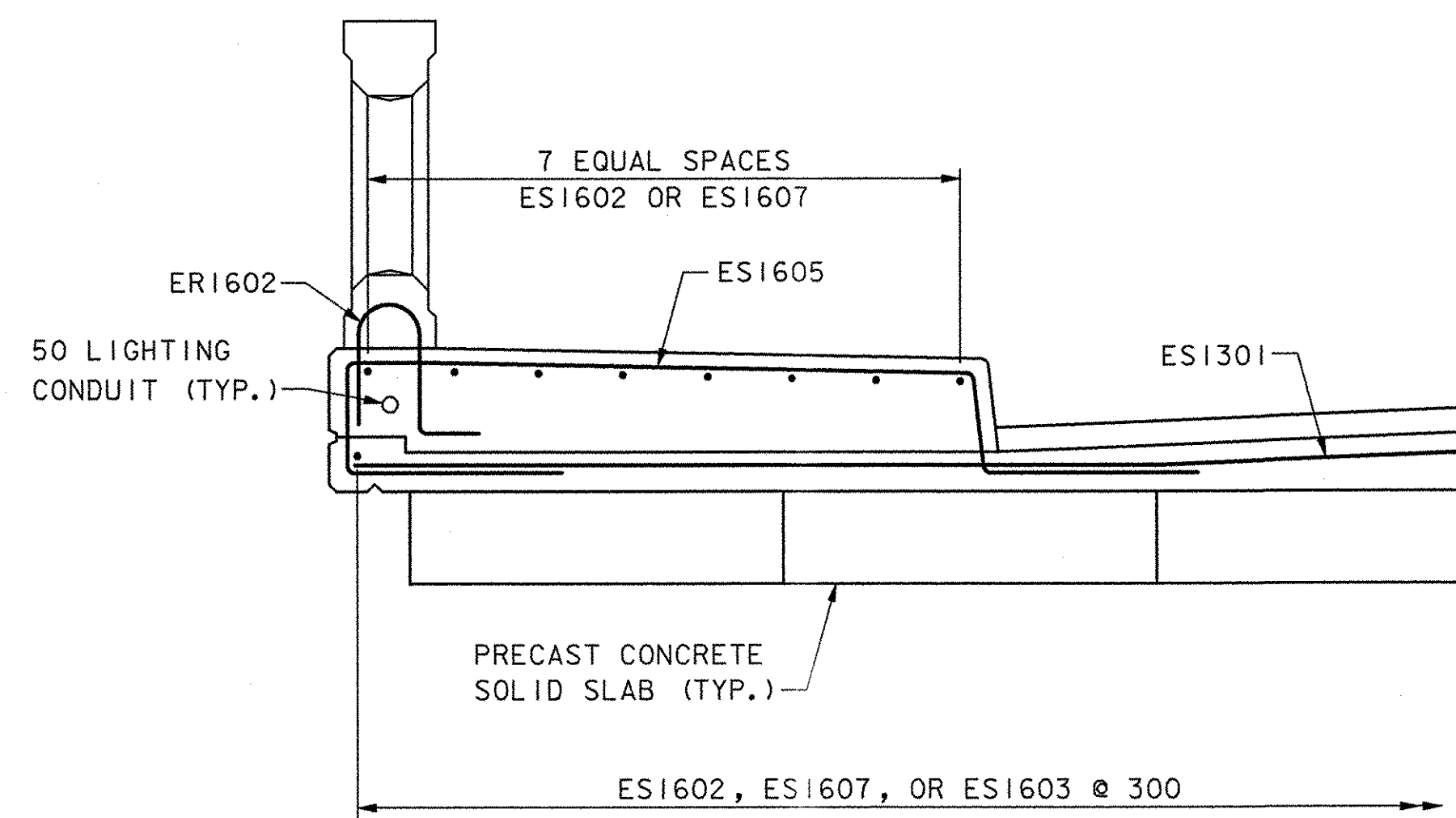


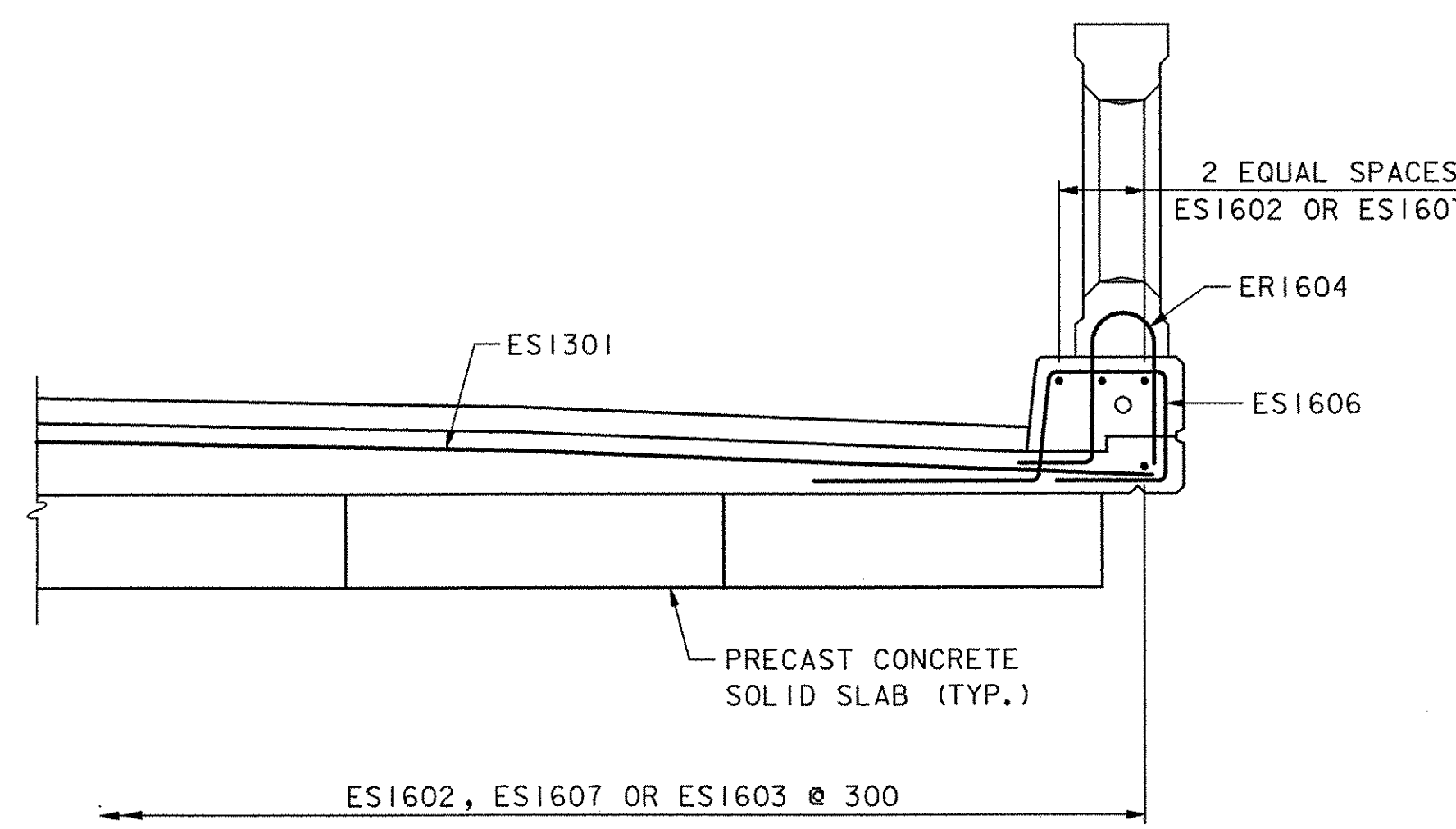
TRANSVERSE SECTION
SPANS 1 & 8 SIDEWALK
SCALE: 1:20



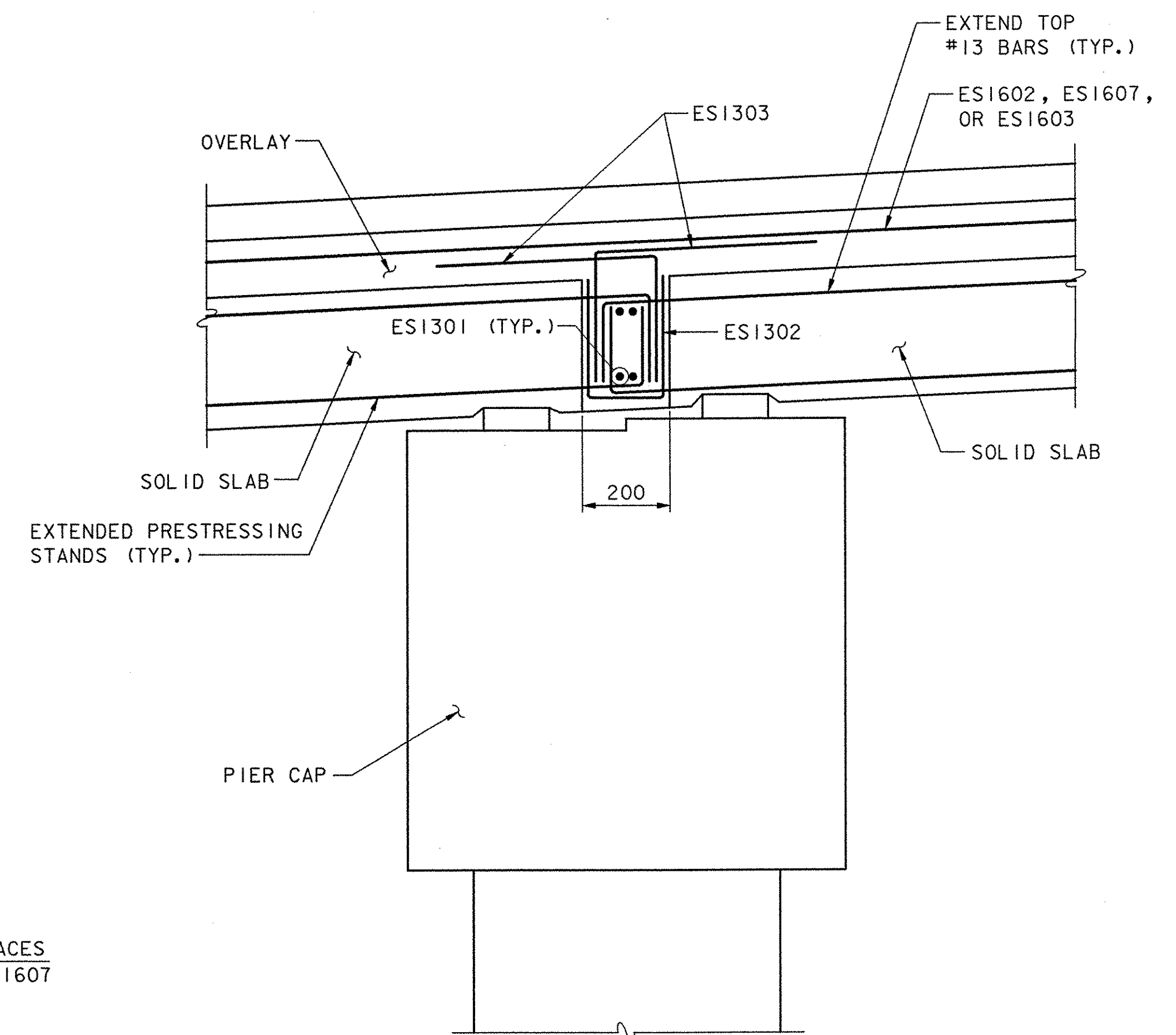
TRANSVERSE SECTION
SPANS 1 & 8 CURB
SCALE: 1:20



TRANSVERSE SECTION
SPANS 2-7 SIDEWALK
SCALE: 1:20



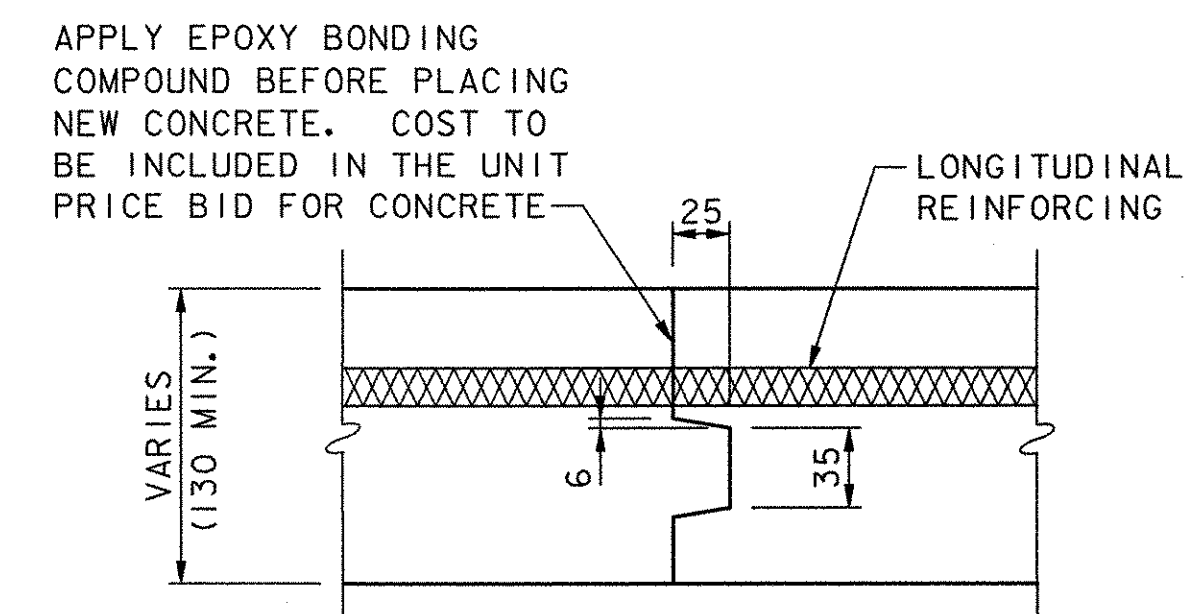
TRANSVERSE SECTION
SPANS 2-7 CURB
SCALE: 1:20



TYPICAL LONGITUDINAL SECTION
PIERS 2 - 6
SCALE: 1:10

NOTES:

1. STIRRUPS PROJECTING FROM THE PRECAST UNITS INTO THE OVERLAY ARE OMITTED FOR CLARITY.
2. THE CONCRETE OVERLAY SHALL BE PLACED CONTINUOUSLY FROM ONE ABUTMENT TO ANOTHER. IF CONTINUOUS PLACEMENT IS INTERRUPTED, THE TRANSVERSE CONSTRUCTION JOINT DETAIL HAS BEEN PROVIDED FOR USE ONLY IF APPROVED BY THE RESIDENT ENGINEER.



TRANSVERSE CONSTRUCTION JOINT DETAIL
NOT TO SCALE

STATE OF VERMONT
AGENCY OF TRANSPORTATION

Town Of COLCHESTER-SOUTH BURLINGTON	Bridge No. 6
Highway No. TH 4/3	Log Sta.
	Surv. Sta.
TH 4/3 OVER WINOOSKI RIVER & N.E.C.R.	
DECK OVERLAY DETAILS (2 OF 2)	
Designed By J. T. KLEIN	Drawn By B. J. MASSE
Checked By K. G. KRETSCH	Bridge Design Supervisor S. M. GUNN
Date 4/05	Date 4/05
PROJECT COLCHESTER-SOUTH BURLINGTON	PROJECT NO. BRM 5600 (6) S C/2
I.G.C. Info.	
Bridge Sheet No. ZD139DD2	Sheet 57 of 124

DATUM
VERTICAL NAVD 88
HORIZONTAL NAD 83 (92)