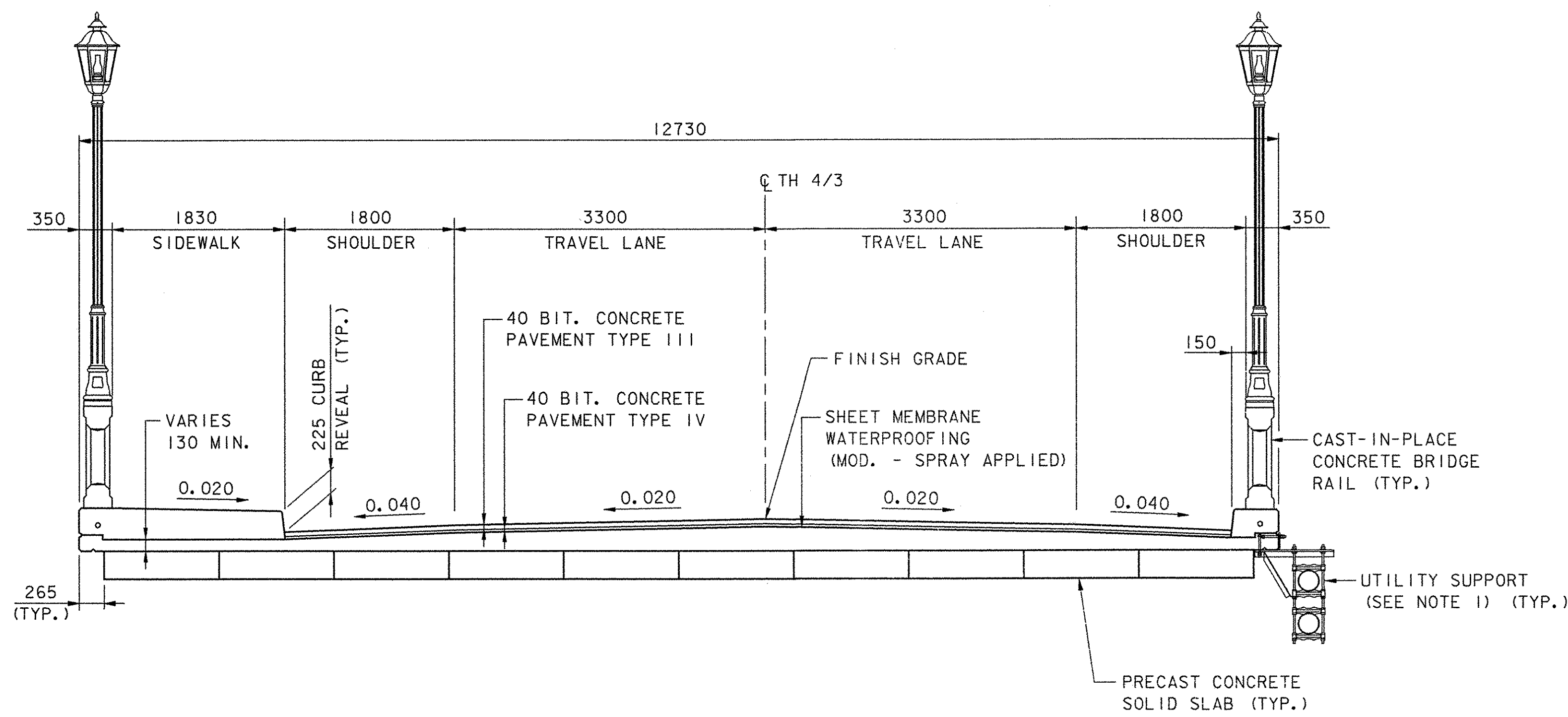
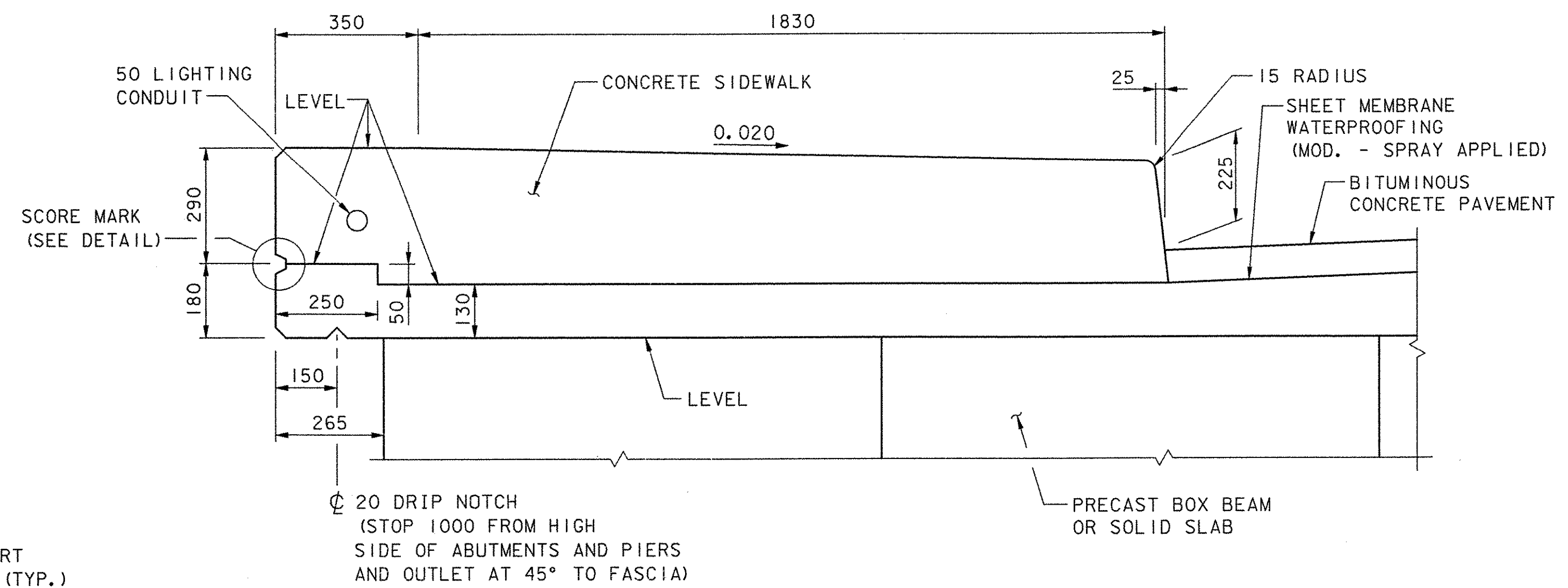
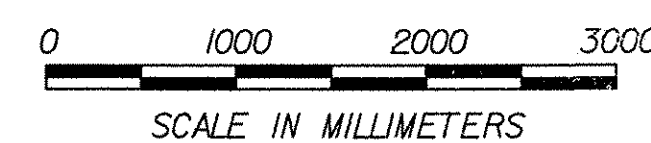


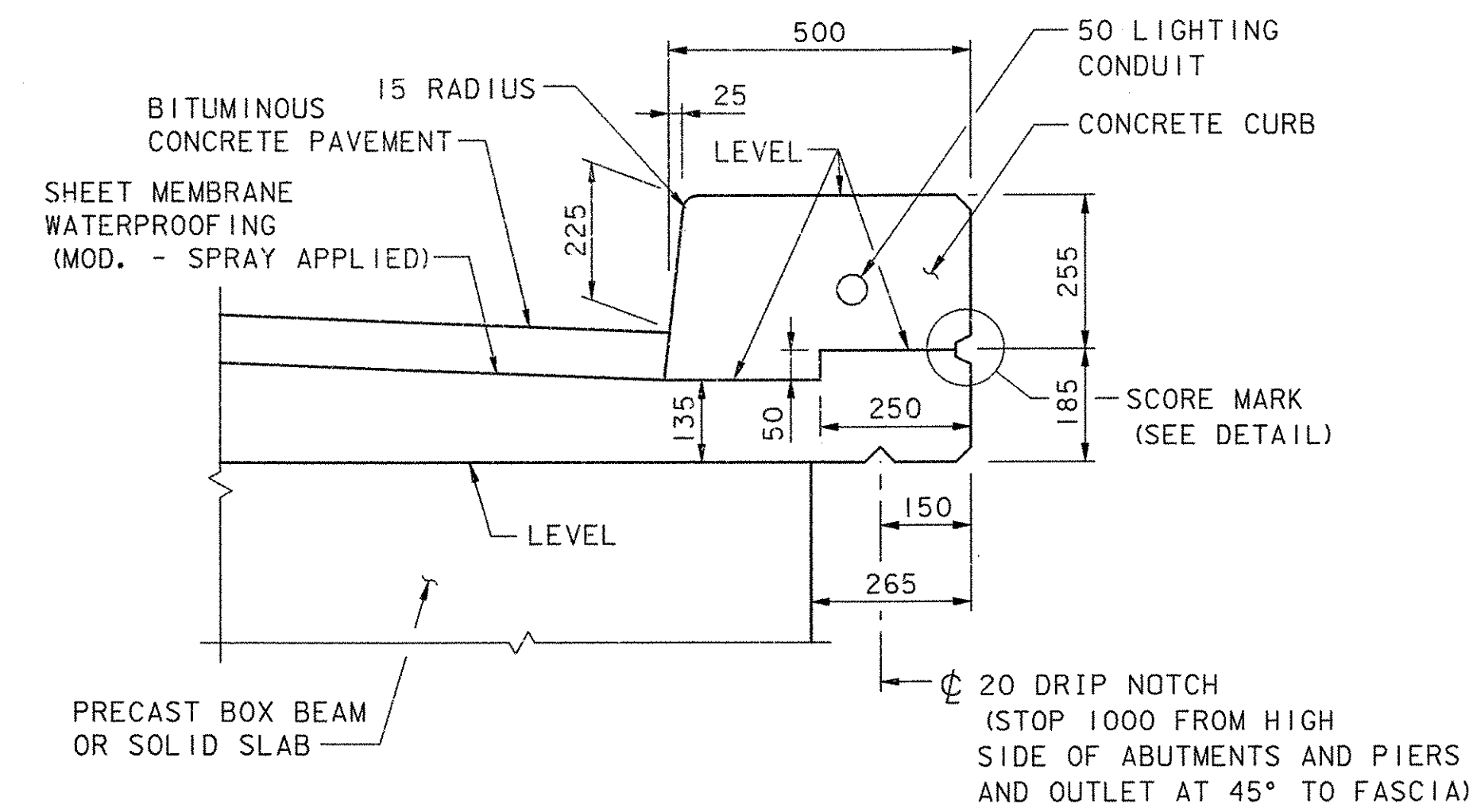
**TYPICAL SECTION - SPANS 1 & 8**  
SCALE: 1:40



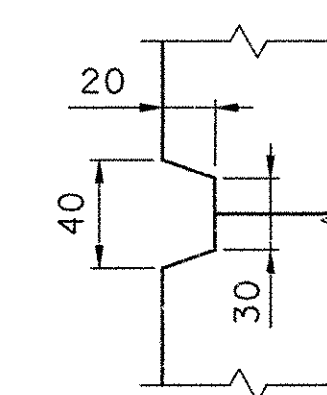
**TYPICAL SECTION - SPANS 2-7**  
SCALE: 1:40



**TYPICAL SIDEWALK DETAIL**  
(BRIDGE RAIL NOT SHOWN)  
SCALE: 1:10



**TYPICAL CURB DETAIL**  
(BRIDGE RAIL NOT SHOWN)  
SCALE: 1:10



**SCORE MARK DETAIL**  
NOT TO SCALE

**NOTE:**

1. THE CONTRACTOR SHALL INSTALL THE THREADED RODS AND NUTS FOR THE UTILITY SUPPORTS AS SHOWN ON SHEETS 85-88. VERMONT GAS SYSTEMS, INC. WILL SUPPLY ALL MATERIALS REQUIRED. ALL COSTS FOR INSTALLING THE STAINLESS STEEL ANCHOR BOLTS SHALL BE INCLUDED IN ITEM 629.60, RELOCATE WATERLINE ON BRIDGE (MOD.)
2. SEE SPECIAL PROVISIONS FOR LIGHTING POST DETAILS.

**STATE OF VERMONT  
AGENCY OF TRANSPORTATION**

Town Of COLCHESTER-SOUTH BURLINGTON	Bridge No. 6
Highway No. TH 4/3	Log Sta.
Surv. Sta.	
TH 4/3 OVER WINOOSKI RIVER & N.E.C.R.	
<b>BRIDGE TYPICAL SECTIONS</b>	
Designed By K.G. KRETSCH	Drawn By B.J. MASSE
Checked By M.A. COLGAN	Date 4/05
Bridge Design Supervisor S.M. GUNN Date 4/05	
PROJECT COLCHESTER-SOUTH BURLINGTON	PROJECT NO. BRM 5600 (6) S C/2
I.G.C. Info.	
Bridge Sheet No. ZD139TS	Sheet 55 of 124

DATUM  
VERTICAL NAVD 88  
HORIZONTAL NAD 83 (92)