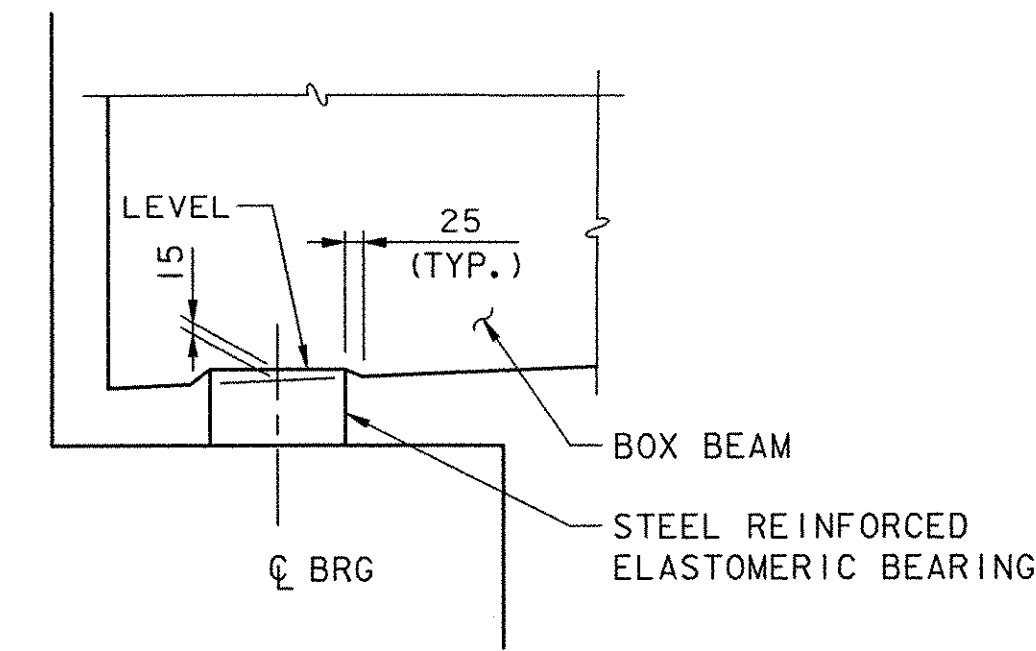
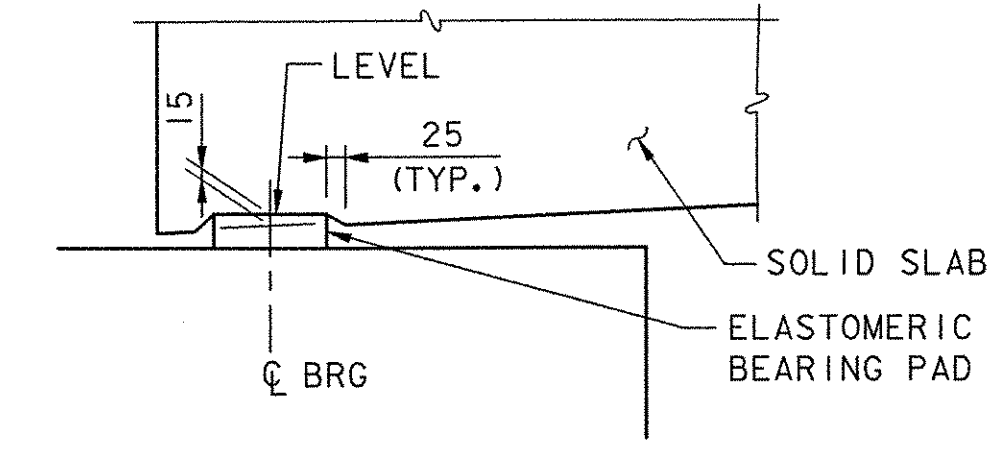


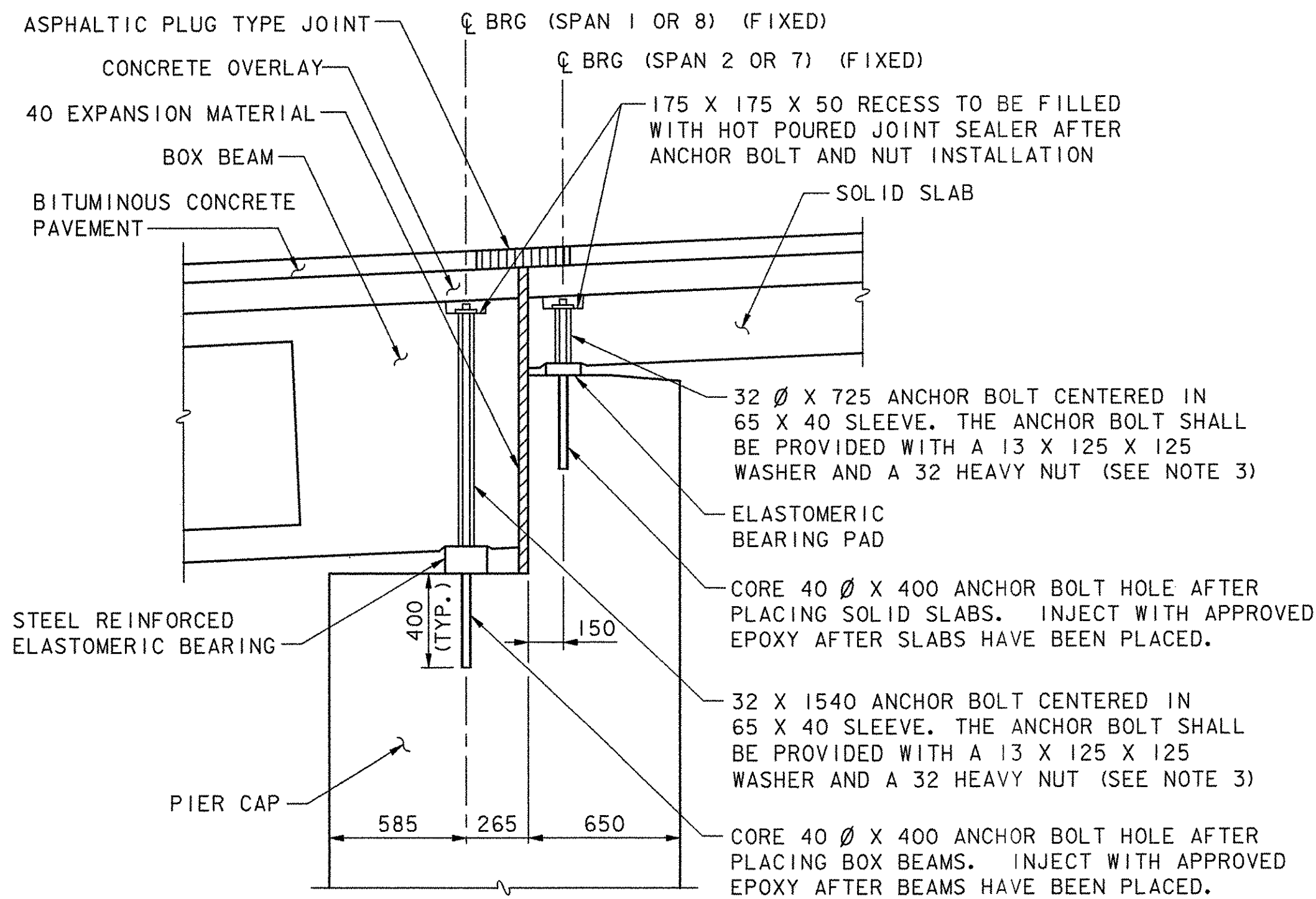
**END OF BRIDGE DETAIL**  
(ABUTMENT NO. 1 SHOWN, ABUTMENT NO. 2 SIMILAR)  
SCALE: 1:20



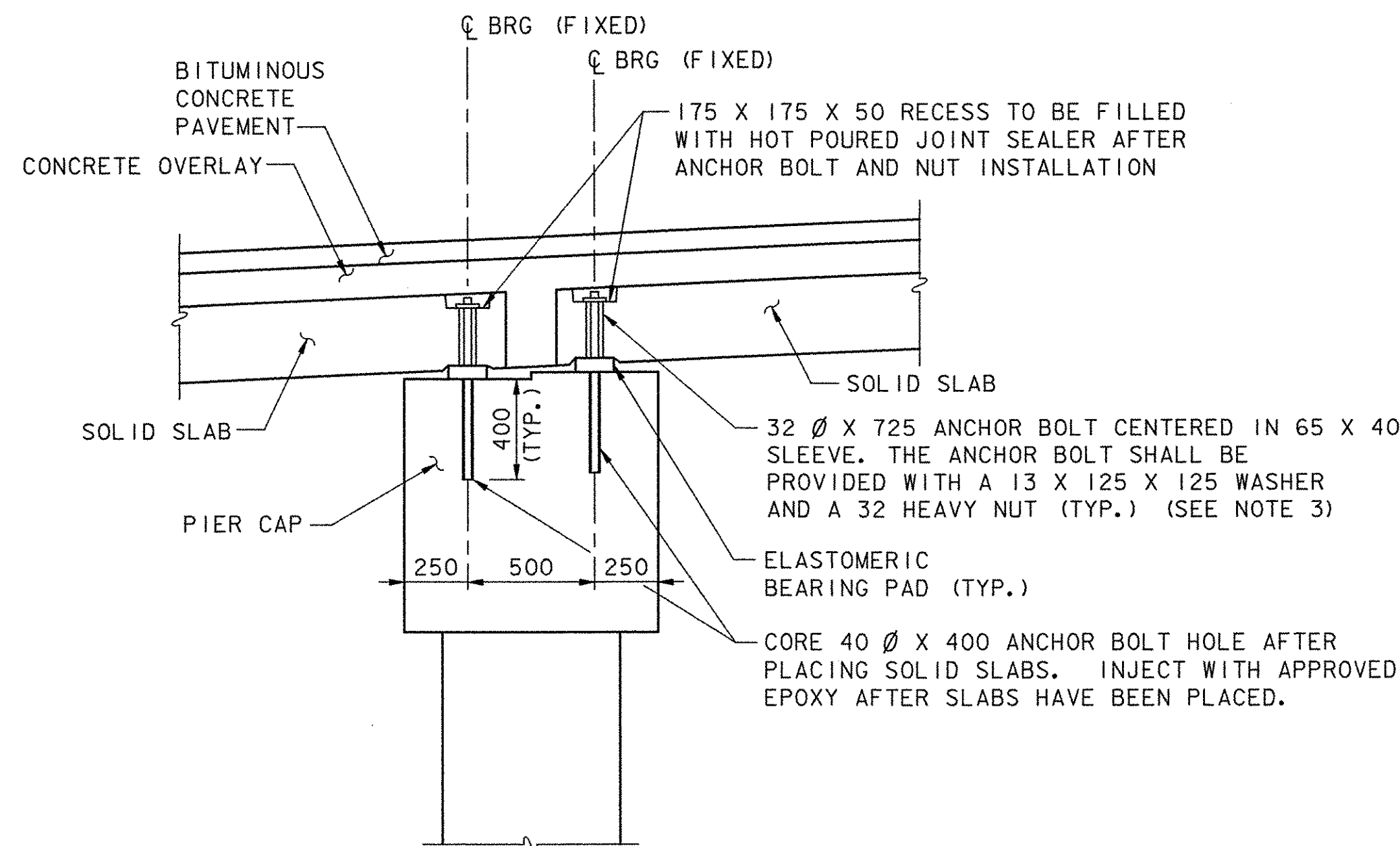
**BOX BEAM DAPPING DETAIL**  
SCALE: 1:10



**SOLID SLAB DAPPING DETAIL**  
SCALE: 1:10



**PIER BENT 1 & 7 DETAIL**  
(BENT 1 SHOWN, BENT 7 SIMILAR)  
SCALE: 1:20



**PIER BENT 2 - 6 DETAIL**  
SCALE: 1:20



**NOTES:**

1. ALL COSTS FOR DRAIN TUBES, PIPE INSULATION, BOND BREAKER, AND EXPANSION MATERIAL SHALL BE INCLUDED IN ITEM 501.34, CONCRETE, HIGH PERFORMANCE CLASS B.
2. ALL COSTS FOR ANCHOR BOLTS SHALL BE INCLUDED IN ITEM 531.10.
3. CONTRACTOR SHALL SUPPLY A SELF ADHESIVE COMPRESSIBLE SEALER BETWEEN THE BOTTOM OF THE UNITS AND THE BRIDGE SEAT. THIS COMPRESSIBLE SEALER SHALL SURROUND THE 65 X 40 SLEEVE IN THE UNIT. THE PURPOSE OF THE SEALER IS TO FACILITATE PLACEMENT OF THE EPOXY AROUND THE ANCHOR BOLTS. USE TYPE 4 GROUT IN ANCHOR BOLT SLEEVE AT FIXED BEARINGS.

**STATE OF VERMONT  
AGENCY OF TRANSPORTATION**

Town Of COLCHESTER-SOUTH BURLINGTON	Bridge No. 6
Highway No. TH 4/3	Log Sta. Surv. Sta.
TH 4/3 OVER WINOOSKI RIVER & N.E.C.R.	
<b>MISCELLANEOUS DETAILS (2 OF 2)</b>	
Designed By K.G. KRETSCH	Drawn By B.J. MASSE
Checked By M.A. COLGAN	Date 4/05
Bridge Design Supervisor S.M. GUNN	
Date 4/05	
PROJECT COLCHESTER-SOUTH BURLINGTON	PROJECT NO. BRM 5600 (6) S C/2
I.G.C. Info.	
Bridge Sheet No. ZD139DT3	Sheet 54 of 124

DATUM  
VERTICAL NAVD 88  
HORIZONTAL NAD 83 (92)