

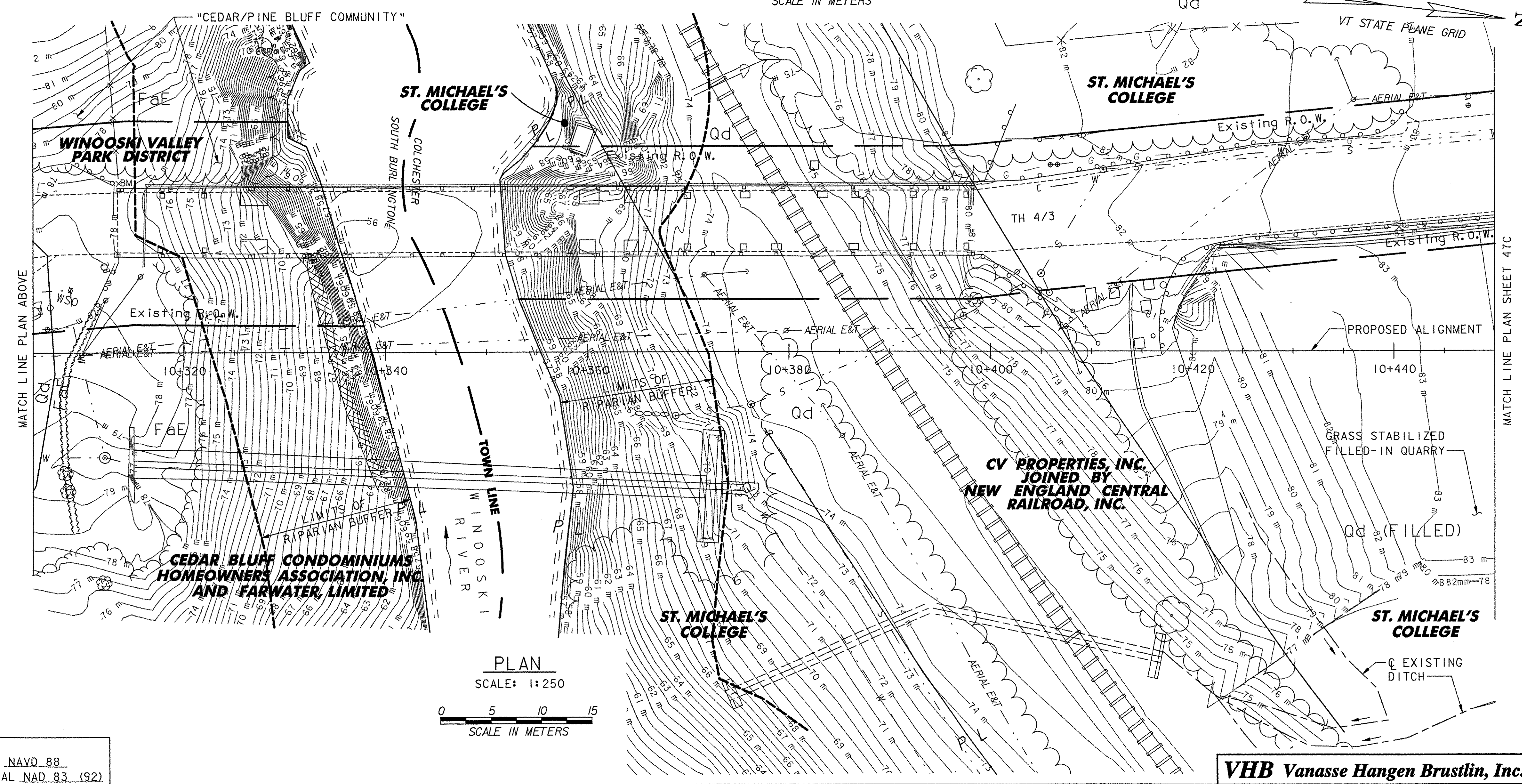
LEGEND

| | |
|------------|---|
| AgA | EXISTING SOIL TYPE BOUNDARY (APPROX.) |
| Qd | EXISTING UNDERGROUND TELEPHONE LINE |
| UT | EXISTING UNDERGROUND WATER LINE |
| W | EXISTING UNDERGROUND GAS LINE |
| G | EXISTING UNDERGROUND SEWER LINE |
| S | EXISTING OVERHEAD ELECTRIC & TELEPHONE LINE |
| AERIAL E&T | EXISTING FORCED MAIN SEWER LINE |
| FM | EXISTING STORM DRAIN |
| SD | LEDGE |
| HYD | HYDRANT |
| ⊙ | MANHOLE |
| ⊕ | MAILBOX |
| d | SIGNS |
| ⊥ | UTILITY POLE GUY WIRE |
| ⊙ | GAS SHUTOFF |
| ⊕ | LIGHT POLE |
| --- | RIPARIAN BUFFER |

FARWATER, LIMITED

CEDAR BLUFF CONDOMINIUMS HOMEOWNERS ASSOCIATION, INC. AND FARWATER, LIMITED

PLAN
SCALE: 1:250



MATCH LINE PLAN ABOVE

MATCH LINE PLAN SHEET 47C

PLAN
SCALE: 1:250



- NOTES:**
- NO SENSITIVE RESOURCES EXIST.
 - SOIL BOUNDARIES ARE APPROXIMATE AND ARE TAKEN FROM CHITTENDEN COUNTY, VT. SOIL SURVEY BOOK DATED JAN. 1974. SEE SHEET 47 FOR SOIL DESCRIPTIONS.

| | |
|--|--------------------------------|
| STATE OF VERMONT AGENCY OF TRANSPORTATION | |
| Town Of COLCHESTER-SOUTH BURLINGTON | Bridge No. 6 |
| Highway No. TH 4/3 | Log Sta. Surv. Sta. |
| TH 4/3 OVER WINOOSKI RIVER & N.E.C.R. | |
| EXISTING CONDITIONS PLAN (2 OF 3) | |
| Designed By S.M. GUNN | Drawn By B.J. MASSE |
| Checked By S.M. GUNN | Date 4/05 |
| S.M. GUNN Date 4/05 | |
| PROJECT COLCHESTER-SOUTH BURLINGTON | PROJECT NO. BRM 5600 (6) S C/2 |
| I.G.C. Info. | |
| Bridge Sheet No. ZD139ER2A | Sheet 47B of 124 |

DATUM
VERTICAL_NAD_88
HORIZONTAL_NAD_83 (92)

VHB Vanasse Hangen Brustlin, Inc.