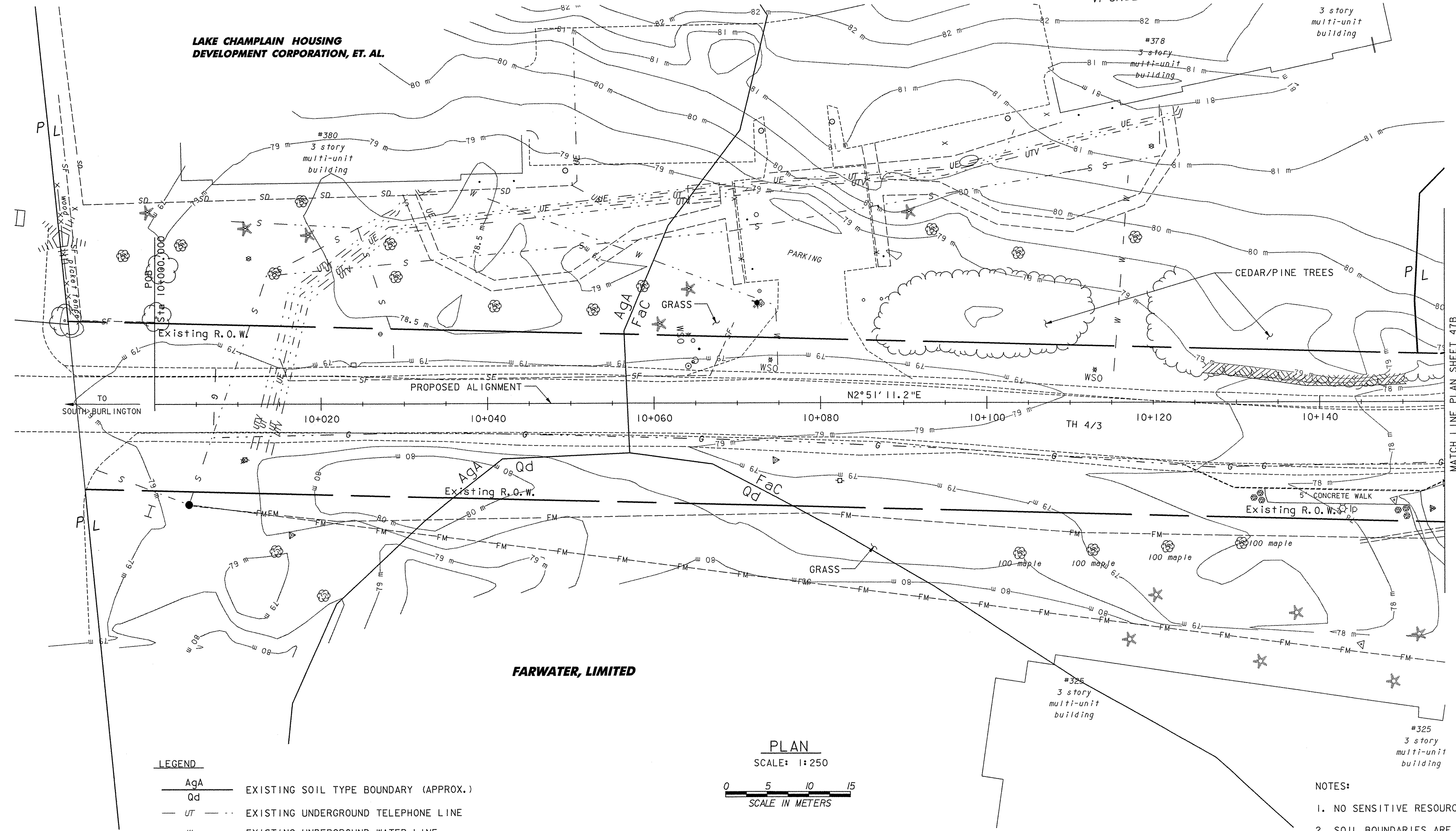
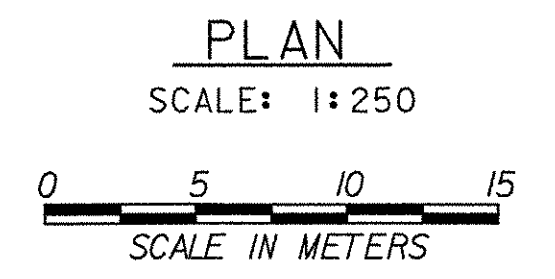


**LAKE CHAMPLAIN HOUSING
DEVELOPMENT CORPORATION, ET. AL.**



FARWATER, LIMITED



- LEGEND**
- AgA — EXISTING SOIL TYPE BOUNDARY (APPROX.)
 - Qd — EXISTING SOIL TYPE BOUNDARY (APPROX.)
 - UT — EXISTING UNDERGROUND TELEPHONE LINE
 - W — EXISTING UNDERGROUND WATER LINE
 - G — EXISTING UNDERGROUND GAS LINE
 - S — EXISTING UNDERGROUND SEWER LINE
 - AERIAL E&T — EXISTING OVERHEAD ELECTRIC & TELEPHONE LINE
 - FM — EXISTING FORCED MAIN SEWER LINE
 - SD — EXISTING STORM DRAIN
 - ▨ LEDGE
 - HYD ○ HYDRANT
 - MANHOLE
 - ♣ MAILBOX
 - d I SIGNS
 - ← UTILITY POLE GUY WIRE
 - ⊙ GAS SHUTOFF
 - lp ☆ LIGHT POLE

- NOTES:**
- NO SENSITIVE RESOURCES EXIST.
 - SOIL BOUNDARIES ARE APPROXIMATE AND ARE TAKEN FROM CHITTENDEN COUNTY, VT. SOIL SURVEY BOOK DATED JAN. 1974. SEE SHEET 47 FOR SOIL DESCRIPTIONS.

STATE OF VERMONT AGENCY OF TRANSPORTATION	
Town Of COLCHESTER-SOUTH BURLINGTON	Bridge No. 6
Highway No. TH 4/3	Log Sta. Surv. Sta.
TH 4/3 OVER WINOOSKI RIVER & N.E.C.R.	
EXISTING CONDITIONS PLAN (1 OF 3)	
Designed By S.M. GUNN	Drawn By B.J. MASSE
Checked By S.M. GUNN	Date 4/05
Bridge Design Supervisor S.M. GUNN Date 4/05	
PROJECT COLCHESTER-SOUTH BURLINGTON	PROJECT NO. BRM 5600 (6) S C/2
I.G.C. Info.	
Bridge Sheet No. ZD139ERIA	Sheet 47A of 124

DATUM
VERTICAL NAVD 88
HORIZONTAL NAD 83 (92)

VHB Vanasse Hangen Brustlin, Inc.