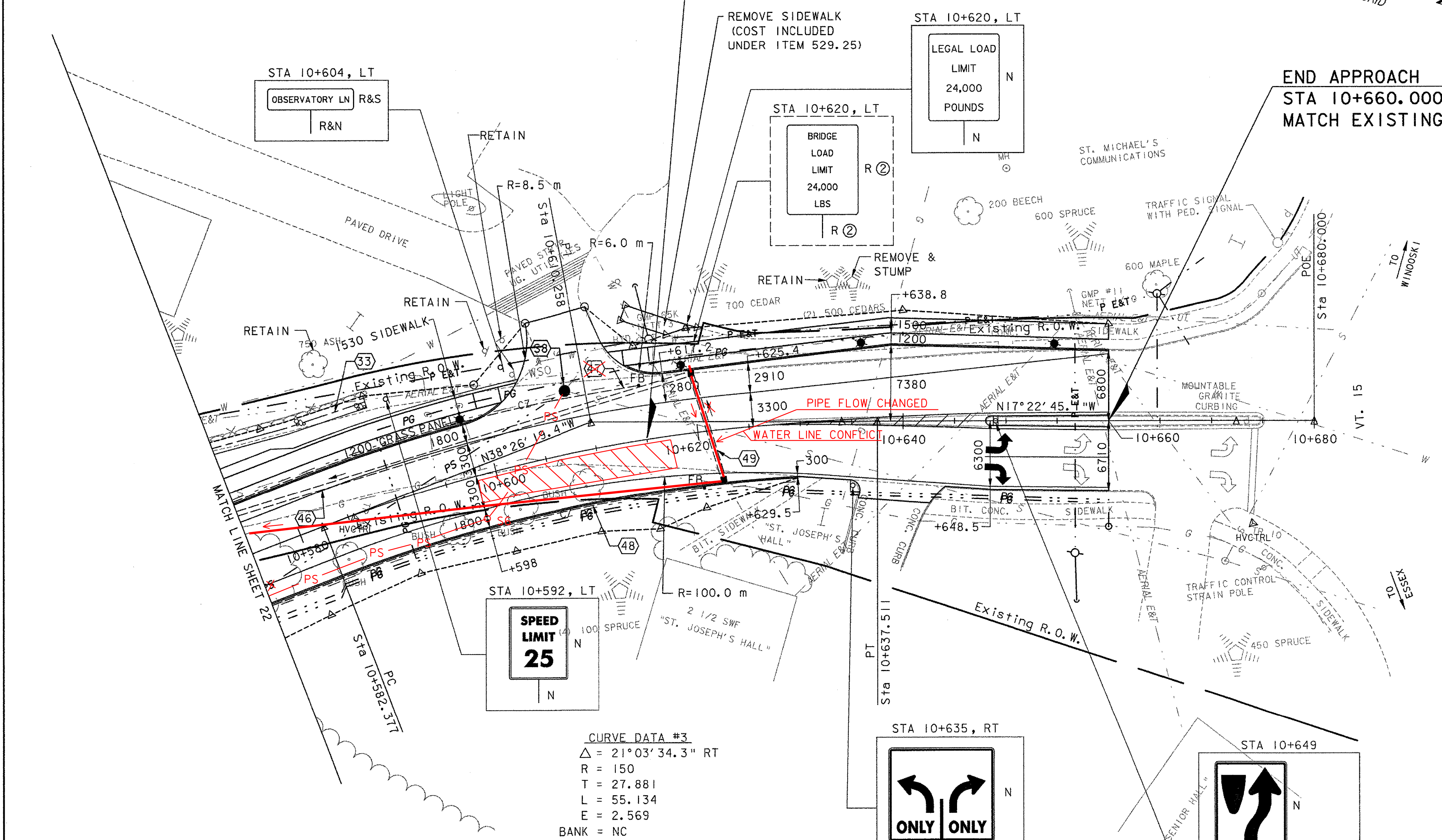
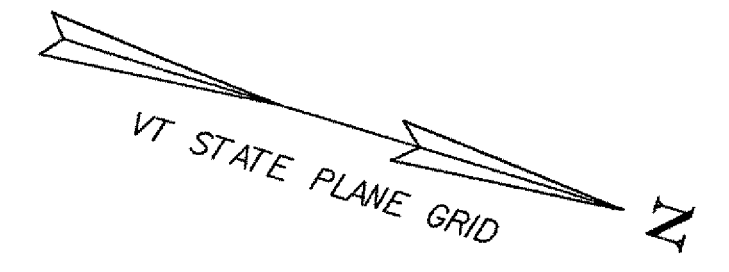
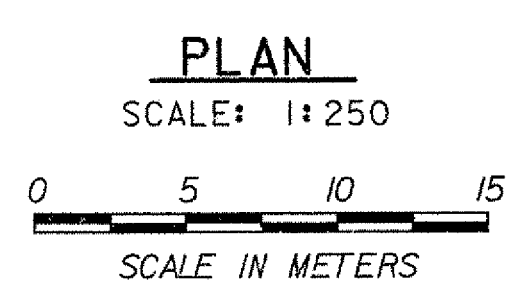


END PROJECT
STA 10+615.000

END APPROACH
STA 10+660.000
MATCH EXISTING



CURVE DATA #3
 $\Delta = 21^\circ 03' 34.3''$ RT
 $R = 150$
 $T = 27.881$
 $L = 55.134$
 $E = 2.569$
 BANK = NC



LEGEND

- UT --- EXISTING UNDERGROUND TELEPHONE LINE
- W --- EXISTING UNDERGROUND WATER LINE
- G --- EXISTING UNDERGROUND GAS LINE
- S --- EXISTING UNDERGROUND SEWER LINE
- AERIAL E&T --- EXISTING OVERHEAD ELECTRIC & TELEPHONE LINE
- FM --- EXISTING FORCED MAIN SEWER LINE
- SD --- EXISTING STORM DRAIN
- HYD Δ HYDRANT
- \circ VALVE
- \odot MANHOLE
- A MAILBOX
- d SIGNS
- \leftarrow UTILITY POLE GUY WIRE
- \odot GAS SHUTOFF
- lp LIGHT POLE
- P E&T --- PROPOSED OVERHEAD ELECTRIC & TELEPHONE BY OTHERS
- PS --- PROPOSED SEWER LINE
- PG --- PROPOSED GAS LINE BY OTHERS
- PW --- PROPOSED WATER LINE BY OTHERS
- PB PROPOSED PULL BOX BY OTHERS
- FB PROPOSED FLUSHING BASIN
- PROPOSED CATCH BASIN OR DROP INLET
- PROPOSED UNDERDRAIN
- TOP OF CUT TO MATCH EXISTING
- TOE OF SLOPE TO MATCH EXISTING
- ★ PROPOSED LIGHT POLE

SIGN LEGEND

- N = NEW
- R = REMOVE
- B-B = BACK-TO-BACK
- RET = RETAIN
- R & S = REMOVE AND RESET
- R & N = REMOVE AND NEW
- ① RETURN TO CITY OF SO. BURLINGTON
- ② RETURN TO TOWN OF COLCHESTER

SEE DRAINAGE AND SEWER NOTES
& DETAILS ON SHEETS 27 & 28

CONSTRUCTION NOTES

- CONSTRUCT SIDEWALK**
 STA 10+575.0 - STA 10+603.0, LT
 STA 10+613.3 - STA 10+660.0, LT
- CONSTRUCT SIDEWALK RAMP, TYPE I**
 (SEE STD. C-3M)
 STA 10+599.7 - STA 10+603.0, LT
 STA 10+613.3 - STA 10+616.3, LT
- CONSTRUCT CONCRETE CURB**
 STA 10+575.00 - STA 10+629.50, RT
 STA 10+575.00 - STA 10+602.10, LT
 STA 10+613.90 - STA 10+660.00, LT
- DURABLE 100 mm WHITE LINE**
 STA 10+575 - STA 10+660, LT & RT
 STA 10+648 - STA 10+660, RT TURNING LANE
- DURABLE 100 mm YELLOW LINE (DOUBLE CENTER LINE)**
 STA 10+575 - STA 10+627.5
- DURABLE 100 mm YELLOW LINE (SINGLE CENTER LINE)**
 STA 10+627.5 - STA 10+660, LT & RT
 STA 10+627.5 - STA 10+648.5, LT & RT
- DURABLE 200 mm DIAGONAL YELLOW LINE**
 STA 10+627.5 - STA 10+648
- DURABLE SYMBOL**
 STA 10+653, RT ARROW-LEFT TURN
 STA 10+653, RT ARROW-RIGHT TURN
- CONSTRUCT DRIVE**
 STA 10+608, LT
 50 BCP TYPE III, 6000 WIDE
- STA 10+639, RT
 COLD PLANE, 2000 APRON
 50 BCP TYPE III, 2000 APRON
- TRAVEL LANE TAPER**
 STA 10+625.4, LT (3300) TO
 STA 10+660, LT (5660)
- STA 10+598, RT (3300) TO
 STA 10+648.5, RT (6300)
- PAVED SHOULDER TAPER**
 STA 10+598, LT (1800) TO
 STA 10+617.2, LT (2800) TO
 STA 10+625.4, LT (2910) TO
 STA 10+638.8, LT (3110) TO
 STA 10+660, LT (300)
- STA 10+598, RT (1800) TO
 STA 10+630, RT (300)
- COLD PLANING - BITUMINOUS PAVEMENT**
 STA 10+645 - STA 10+660

NOTE:

- 1. LIGHTING CONDUITS AND CONDUIT SLEEVES NOT SHOWN FOR CLARITY.

**STATE OF VERMONT
AGENCY OF TRANSPORTATION**

Town Of COLCHESTER-SOUTH BURLINGTON	Bridge No. 6
Highway No. TH 4/3	Log Sta.
TH 4/3 OVER WINOOSKI RIVER & N. E. C. R.	
PLAN (5 OF 5)	
Designed By A. J. CRAWFORD	Drawn By C. S. MERCER
Checked By J. A. MERCER	Bridge Design Supervisor
Date 4/05	S. M. GUNN Date 4/05
PROJECT COLCHESTER-SOUTH BURLINGTON	PROJECT NO. BRM 5600 (6) S C/2
I.G.C. Info.	
Bridge Sheet No. ZD139PN5	Sheet 23 of 124

DATUM
 VERTICAL NAVD 88
 HORIZONTAL NAD 83 (92)

VHB Vanasse Hangen Brustlin, Inc.