

CONSTRUCTION NOTES

CONSTRUCT CONCRETE CURB
 STA 10+290.00 - STA 10+301.50, LT & RT
 STA 10+301.50 - STA 10+306.50, LT & RT
 (175 TO 225 REVEAL)
 STA 10+407.30 - STA 10+412.30, LT & RT
 (225 TO 175 REVEAL)
 STA 10+412.30 - STA 10+450.00, LT & RT

CONSTRUCT SIDEWALK
 STA 10+290 - STA 10+310.4, LT
 STA 10+401.4 - STA 10+450, LT

CAST-IN-PLACE CONCRETE BRIDGE RAIL
 STA 10+306.5 - STA 10+407.3, LT & RT
 STA 10+312.1 - STA 10+317.2, LT

STEEL BEAM GUARD RAIL
 STA 10+290 - STA 10+306.5, RT
 STA 10+295 - STA 10+306.5, LT
 STA 10+407.3 - STA 10+428, LT
 STA 10+407.3 - STA 10+450, RT

ANCHOR FOR STEEL BEAM GUARD RAIL
 STA 10+297, LT
 STA 10+426, LT

DURABLE 100 mm WHITE LINE
 STA 10+290 - STA 10+450, LT & RT

DURABLE 100 mm YELLOW LINE (DOUBLE CENTER LINE)
 STA 10+290 - STA 10+450

REMOVE EXISTING GUARD RAIL
 STA 10+309 - STA 10+313, LT
 STA 10+311 - STA 10+313, LT
 STA 10+400 - STA 10+403, LT
 STA 10+400 - STA 10+408, LT
 STA 10+400 - STA 10+441, LT
 STA 10+416, RT - STA 10+450, LT

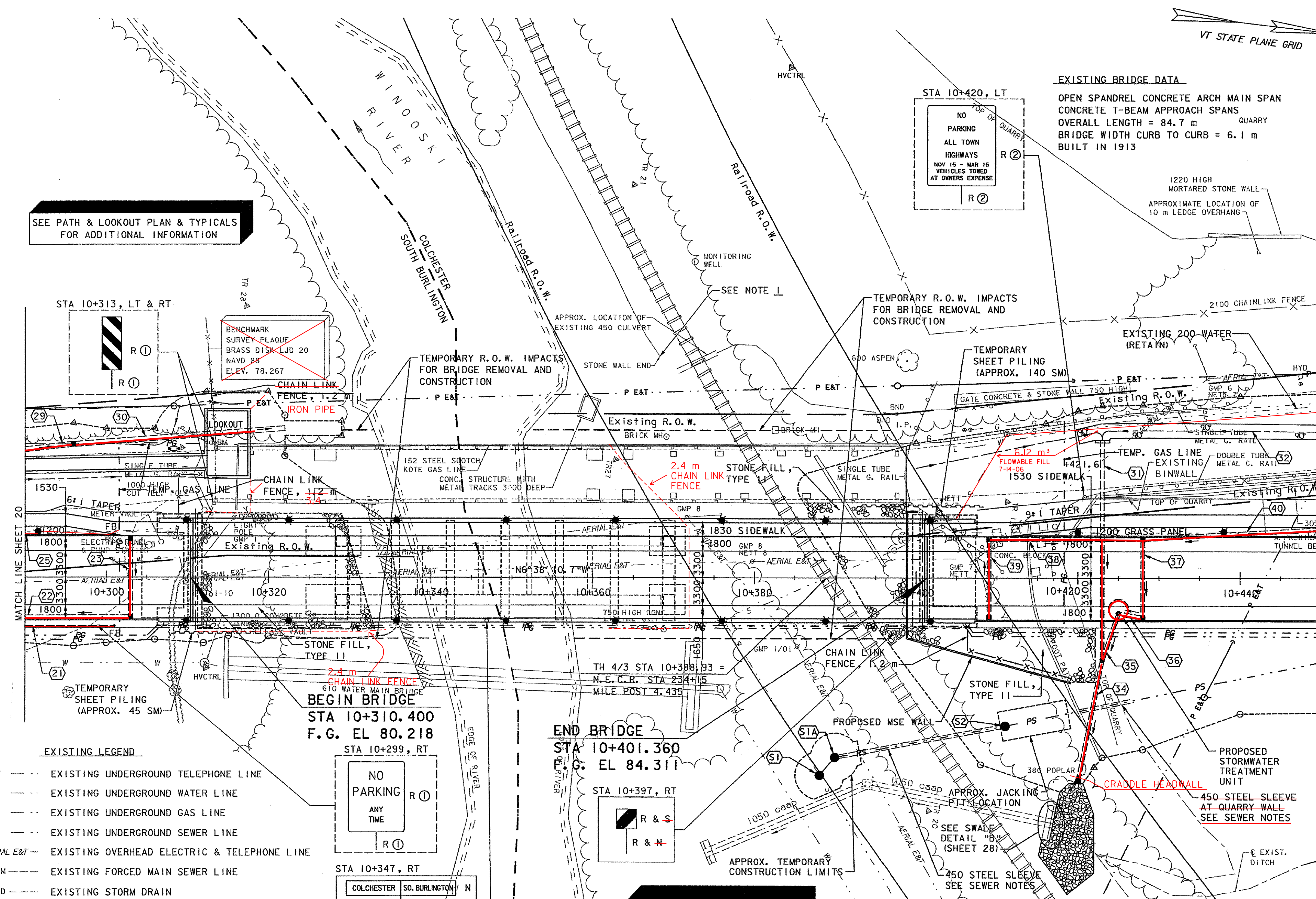
REMOVE EXISTING FENCE
 STA 10+313, LT
 STA 10+417, RT - STA 10+450, LT

CONSTRUCT CHAIN LINK FENCE, 1.2 m
 STA 10+309.0, LT 7.3 m - LT 12.7 m
 STA 10+309.0, LT 12.7 m - STA 10+312.0, LT 12.7 m
 STA 10+313, LT 20.5 m - LT 24.2 m
 STA 10+406.0, RT 5.5 m - RT 9.2 m
 STA 10+406.0, RT 9.2 m - STA 10+419, RT 12.6 m

CONSTRUCT BRACING ASSEMBLY FOR CHAIN LINK FENCE
 STA 10+309.9, LT

NOTES:
 1. SEE CONSTRUCTION NOTE 14, SHEET 51 FOR INFORMATION REGARDING RETAINING WALL ALONG RAILROAD AT STA 10+368.6 LT. 27.0 (+/-).
 2. LIGHTING CONDUITS AND CONDUIT SLEEVES NOT SHOWN FOR CLARITY.

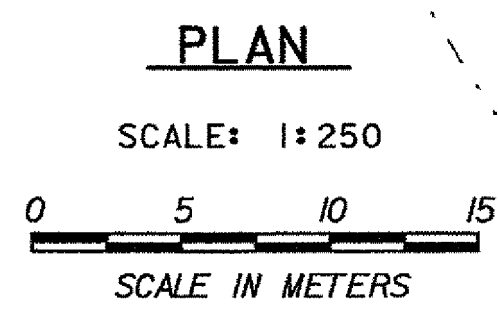
SEE PATH & LOOKOUT PLAN & TYPICALS FOR ADDITIONAL INFORMATION



- EXISTING LEGEND**
- UT --- EXISTING UNDERGROUND TELEPHONE LINE
 - W --- EXISTING UNDERGROUND WATER LINE
 - G --- EXISTING UNDERGROUND GAS LINE
 - S --- EXISTING UNDERGROUND SEWER LINE
 - AERIAL E&T --- EXISTING OVERHEAD ELECTRIC & TELEPHONE LINE
 - FM --- EXISTING FORCED MAIN SEWER LINE
 - SD --- EXISTING STORM DRAIN
 - LEGE --- LEDGE
 - HYD ○ --- HYDRANT
 - --- VALVE
 - ⊙ --- MANHOLE
 - ♣ --- MAILBOX
 - ⊥ --- SIGNS
 - ← --- UTILITY POLE GUY WIRE
 - ⊙ --- GAS SHUTOFF
 - ⊙ --- LIGHT POLE

- PROPOSED LEGEND**
- P E&T --- PROPOSED OVERHEAD ELECTRIC & TELEPHONE BY OTHERS
 - PS --- PROPOSED SEWER LINE
 - PG --- PROPOSED GAS LINE BY OTHERS
 - PW --- PROPOSED WATER LINE BY OTHERS
 - PB --- PROPOSED PULL BOX BY OTHERS
 - FB --- PROPOSED FLUSHING BASIN
 - --- PROPOSED CATCH BASIN OR DROP INLET
 - --- PROPOSED UNDERDRAIN
 - x-x-x- --- PROPOSED CHAIN LINK FENCE
 - △-△-△- --- TOP OF CUT TO MATCH EXISTING
 - --- TOE OF SLOPE TO MATCH EXISTING
 - ★ --- PROPOSED LIGHT POLE

- SIGN LEGEND**
- N = NEW
 - R = REMOVE
 - B-B = BACK-TO-BACK
 - RET = RETAIN
 - R & S = REMOVE AND RESET
 - R & N = REMOVE AND NEW
 - ① RETURN TO CITY OF SO. BURLINGTON
 - ② RETURN TO TOWN OF COLCHESTER



SEE DRAINAGE AND SEWER NOTES & DETAILS ON SHEETS 27 & 28

DATUM
 VERTICAL NAVD 88
 HORIZONTAL NAD 83 (92)

**STATE OF VERMONT
 AGENCY OF TRANSPORTATION**

Town Of COLCHESTER-SOUTH BURLINGTON	Bridge No. 6
Highway No. TH 4/3	Log Sta. Surv. Sta.
TH 4/3 OVER WINOOSKI RIVER & N.E.C.R.	
PLAN (3 OF 5)	
Designed By A. J. CRAWFORD	Drawn By C. S. MERCER
Checked By J. A. MERCER	Date 4/05
Bridge Design Supervisor S. M. GUNN Date 4/05	
PROJECT COLCHESTER-SOUTH BURLINGTON	PROJECT NO. BRM 5600 (6) S C/2
I.G.C. Info.	
Bridge Sheet No. ZD139PN3	Sheet 21 of 124

VHB Vanasse Hangen Brustlin, Inc.