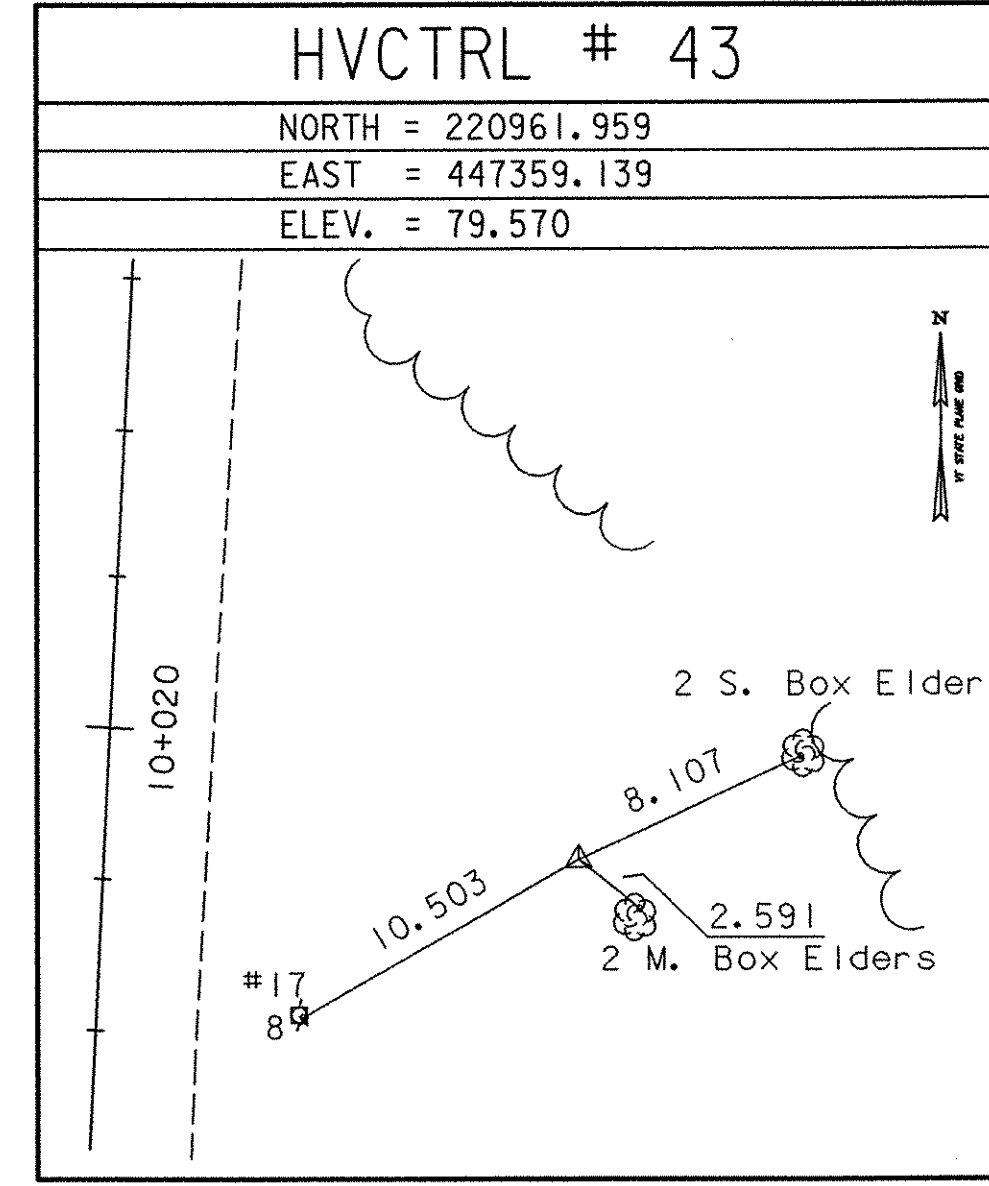
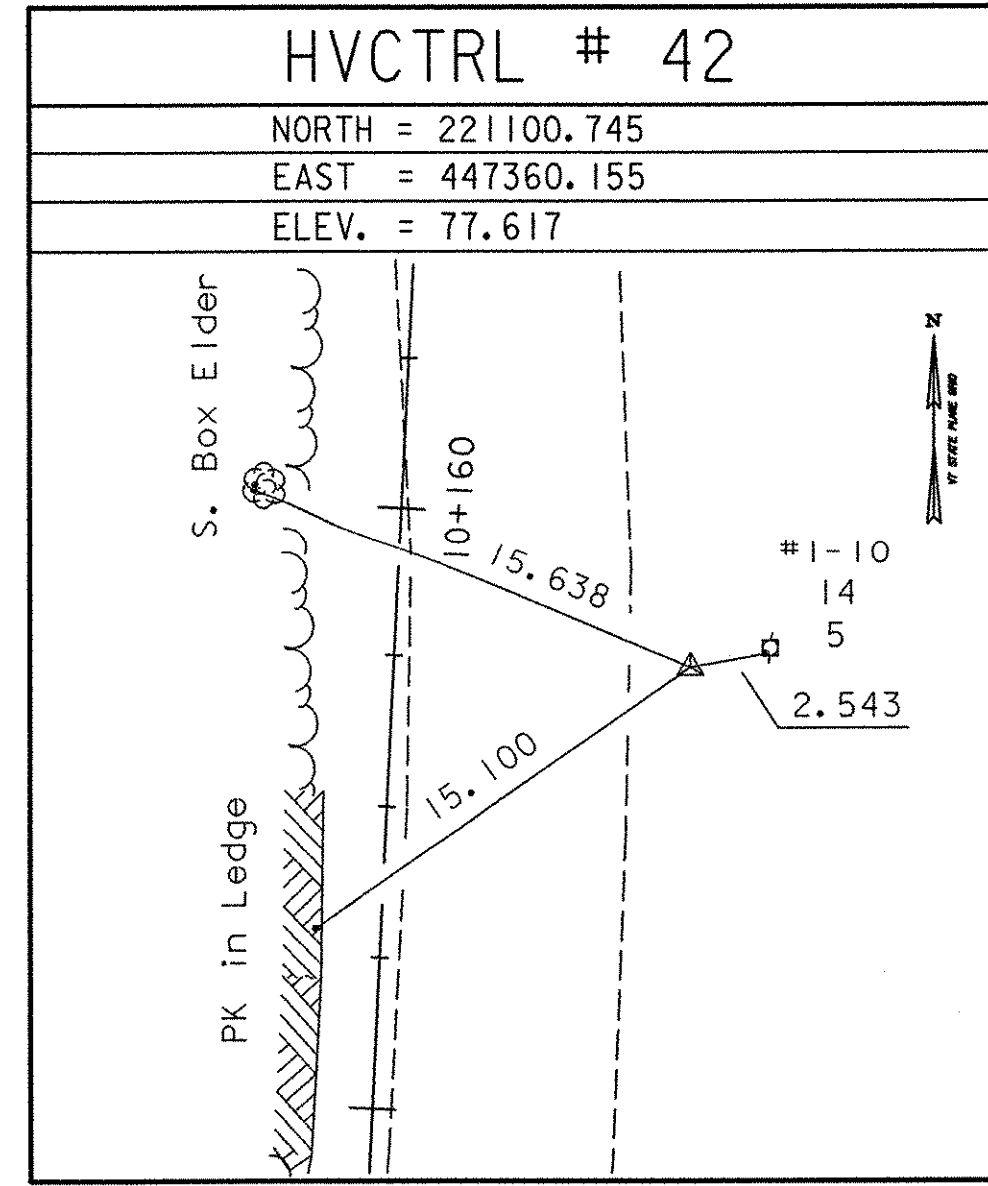
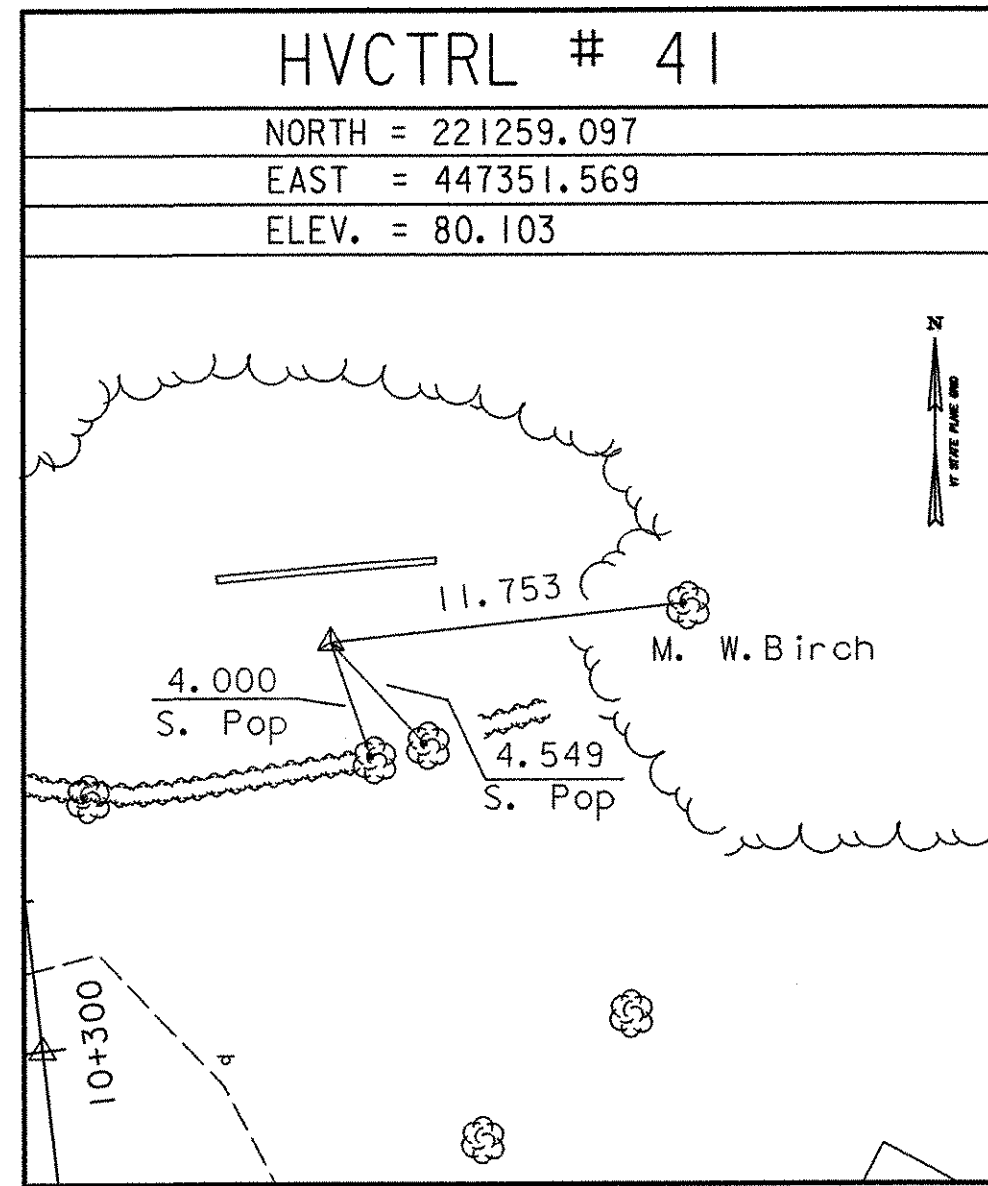
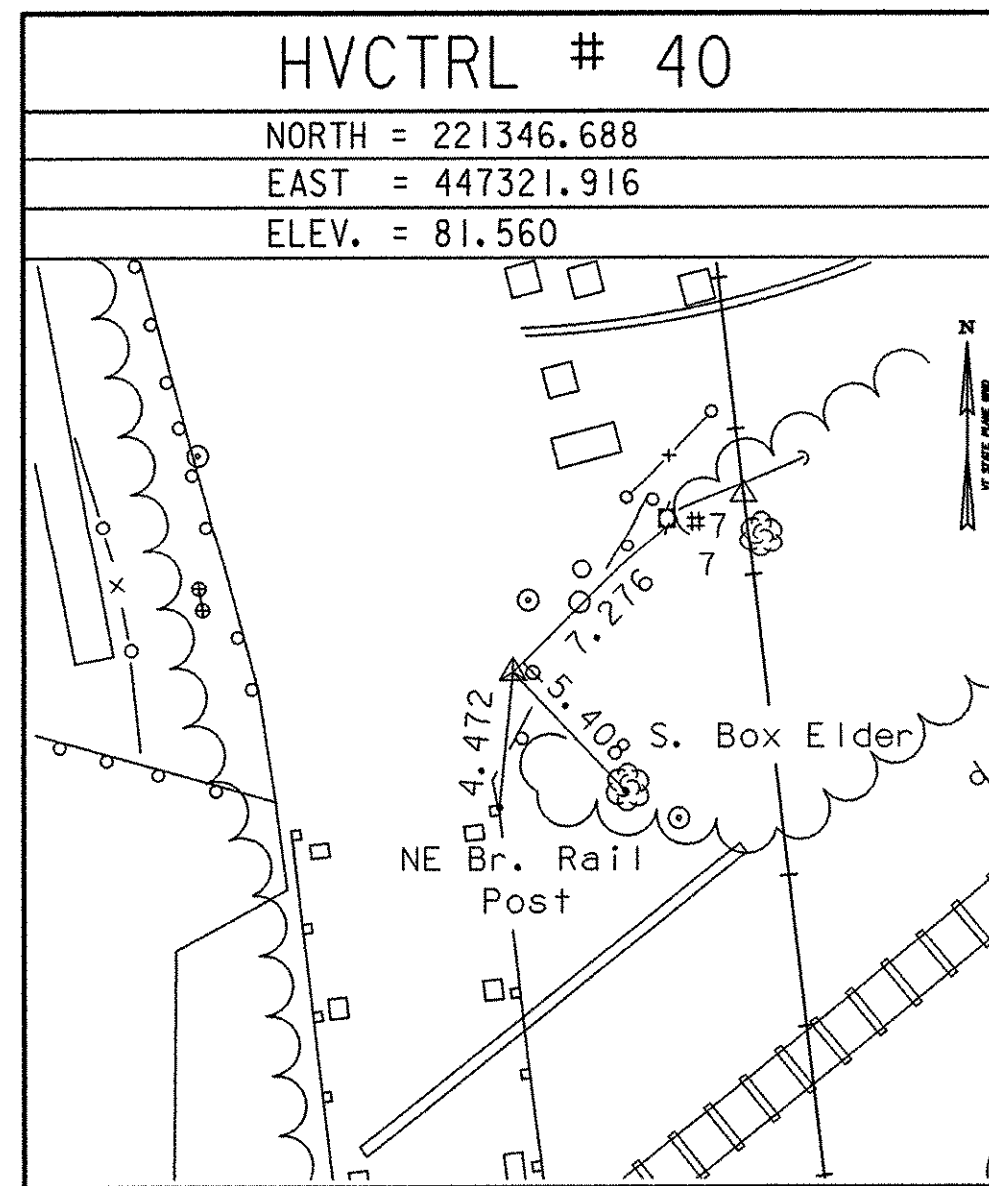
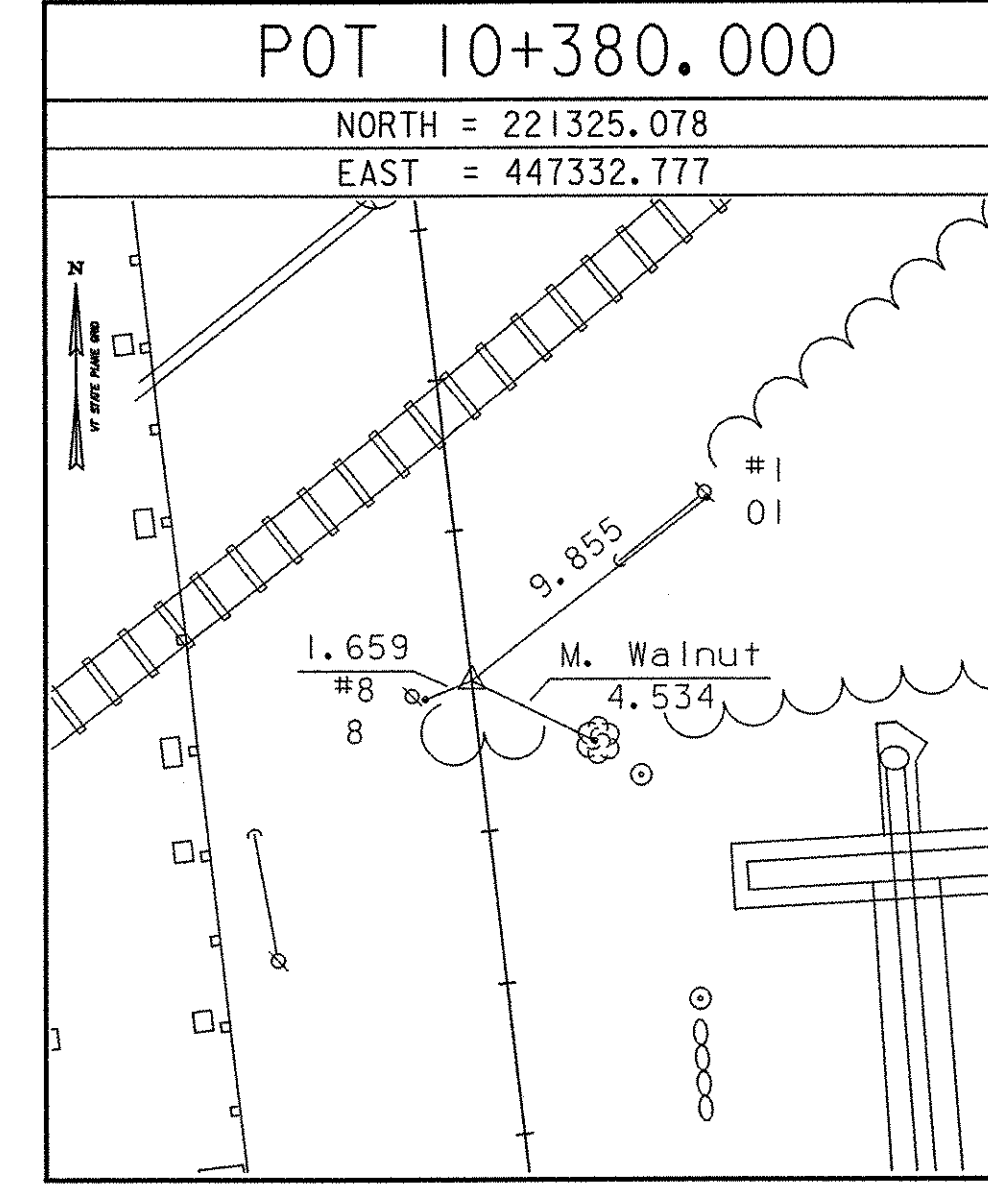
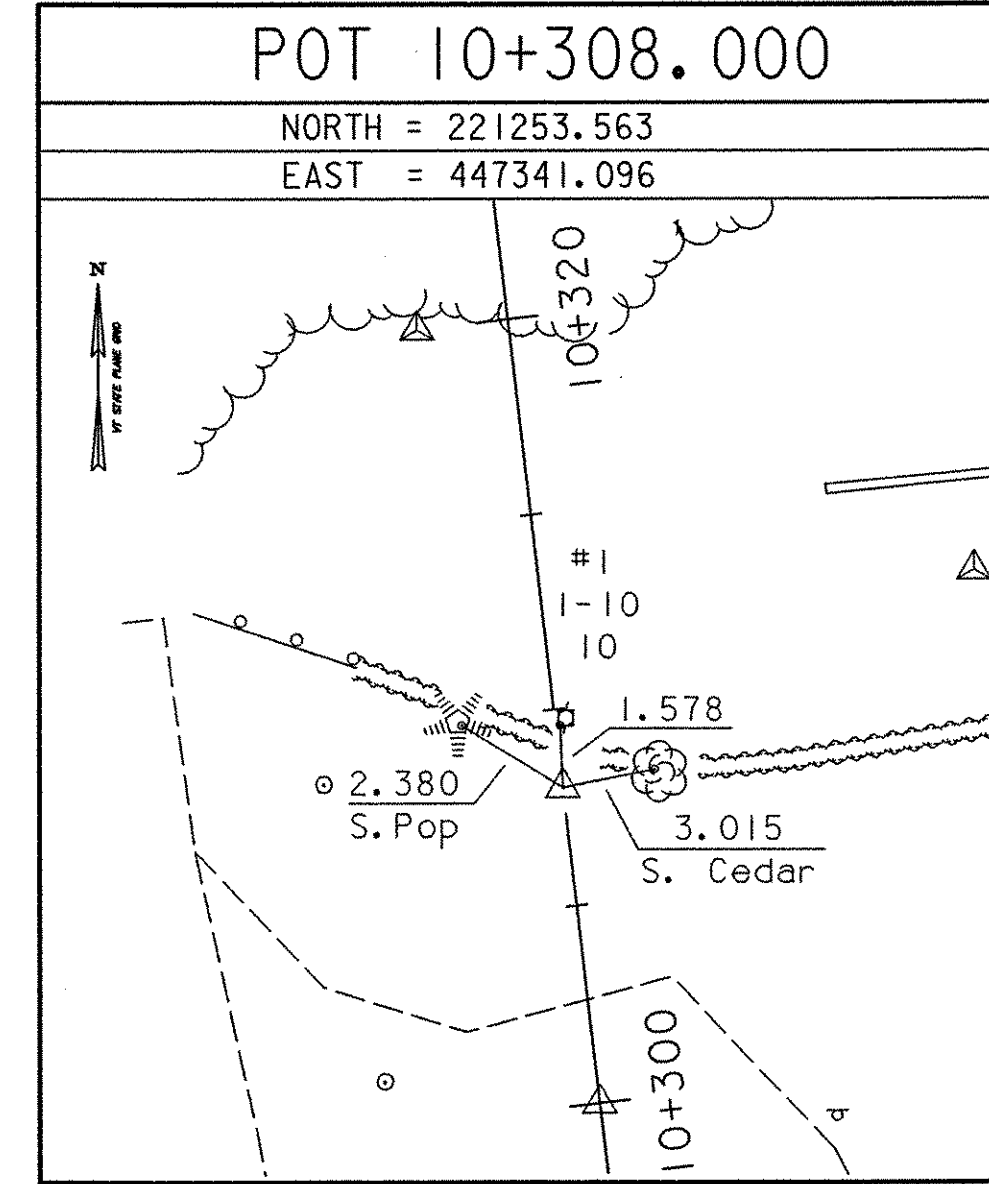
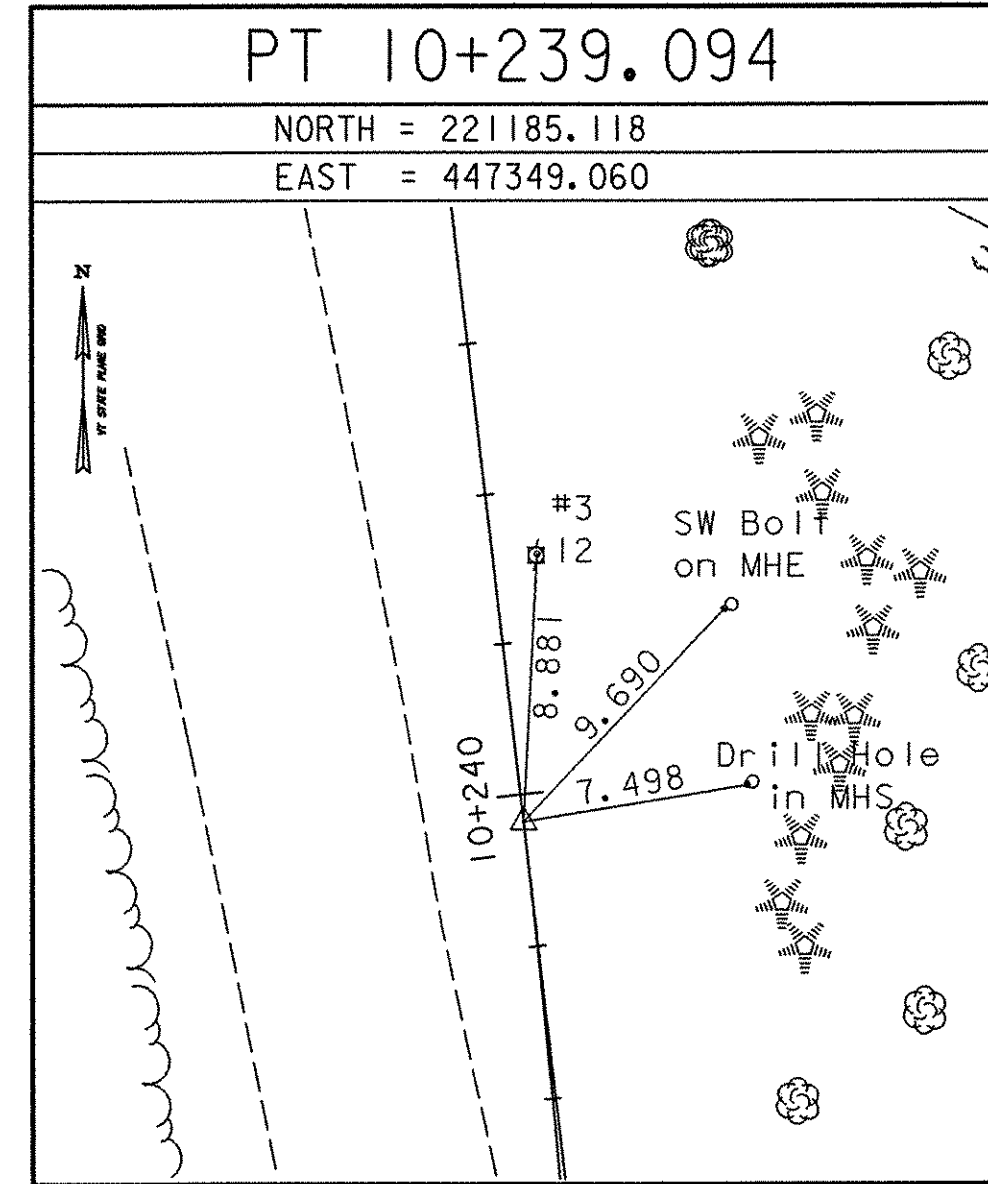
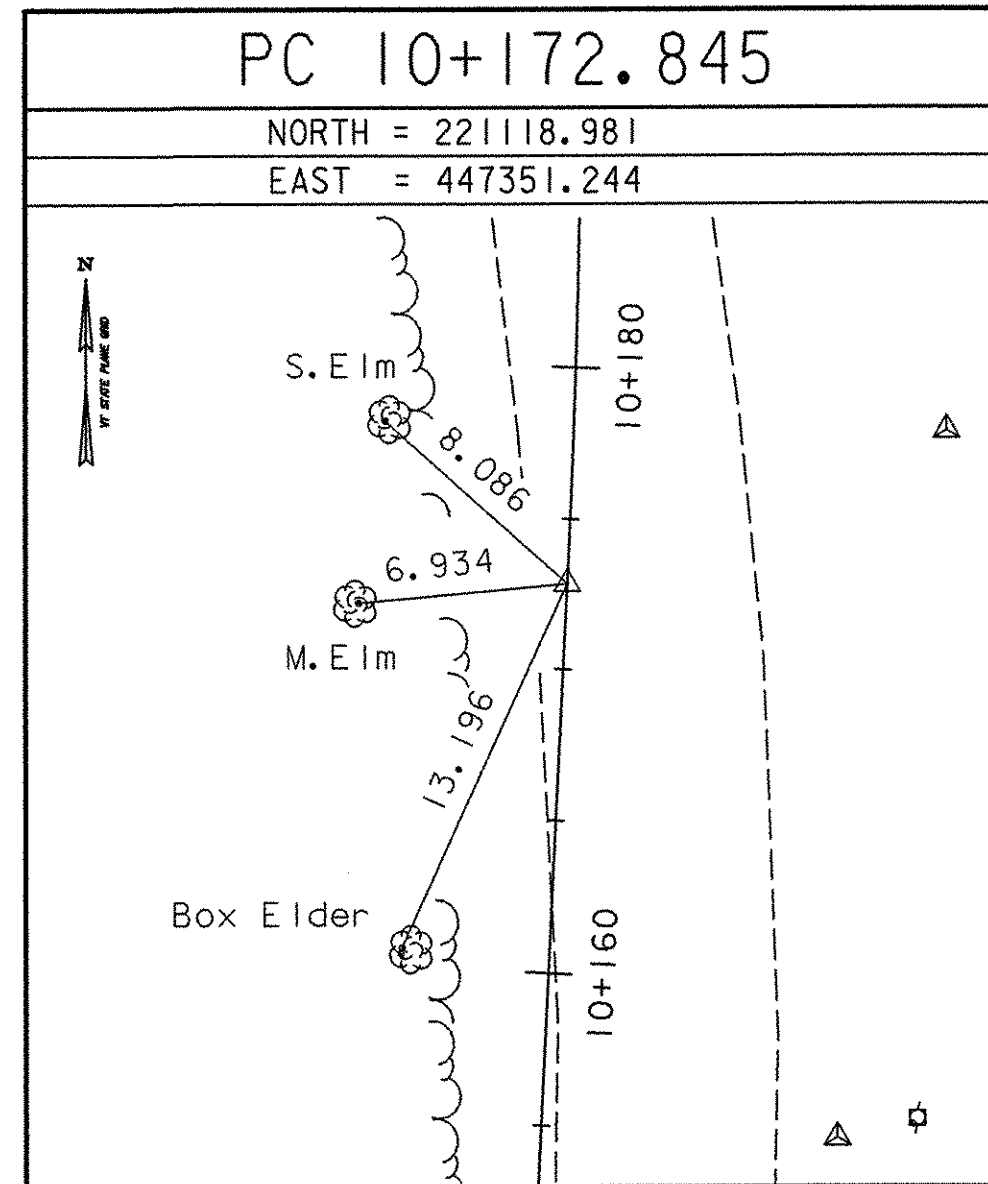
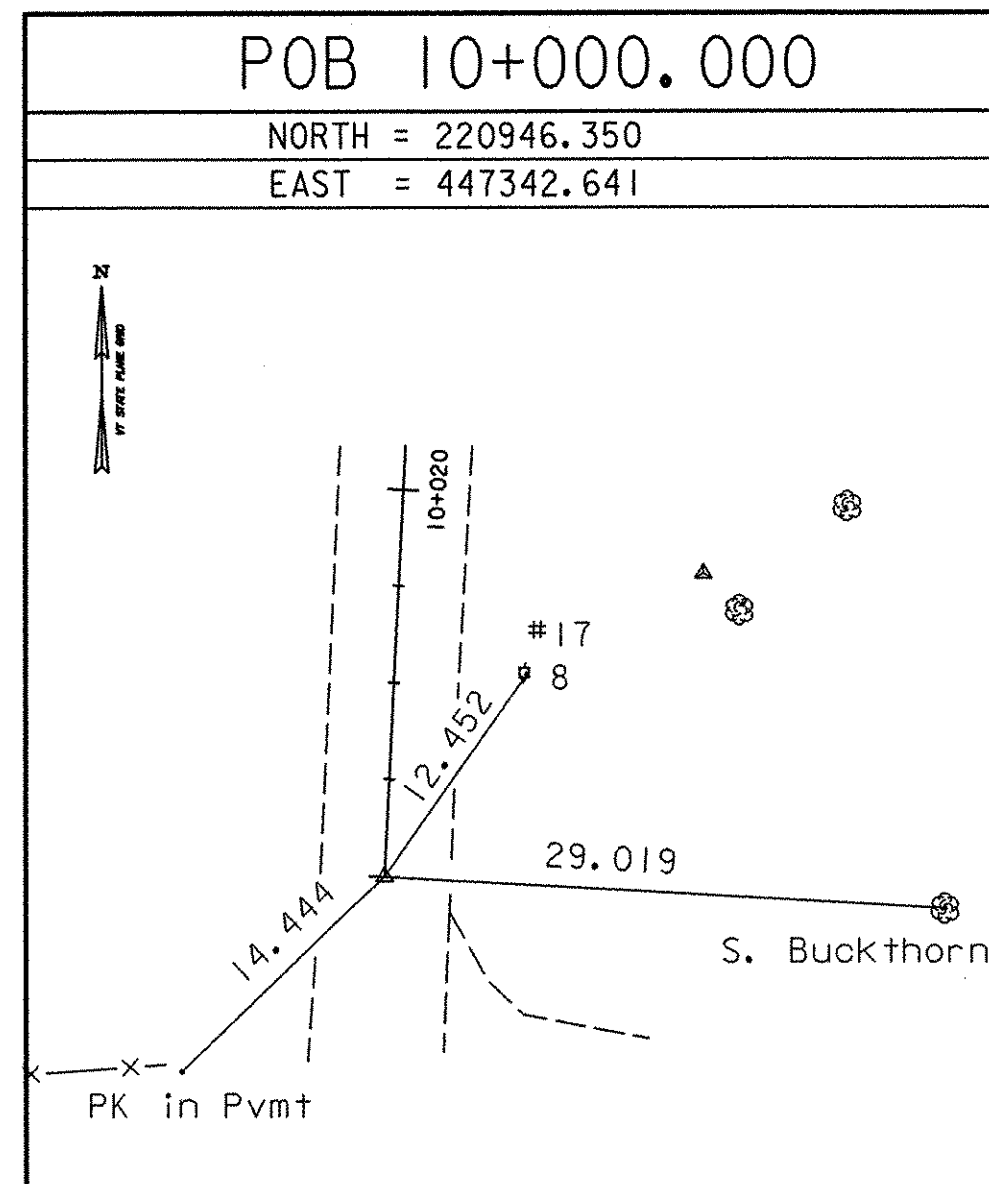


TRAVERSE TIES



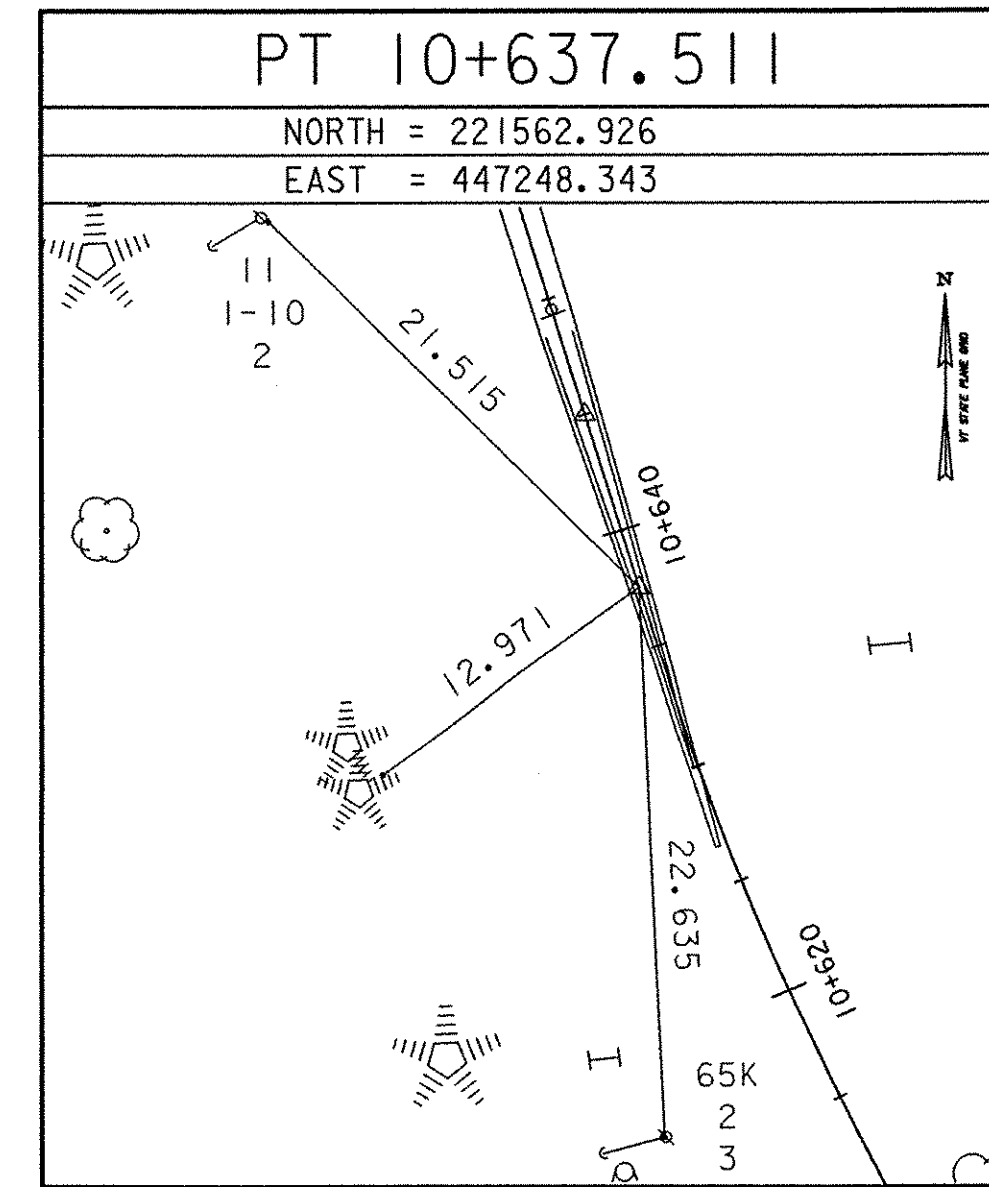
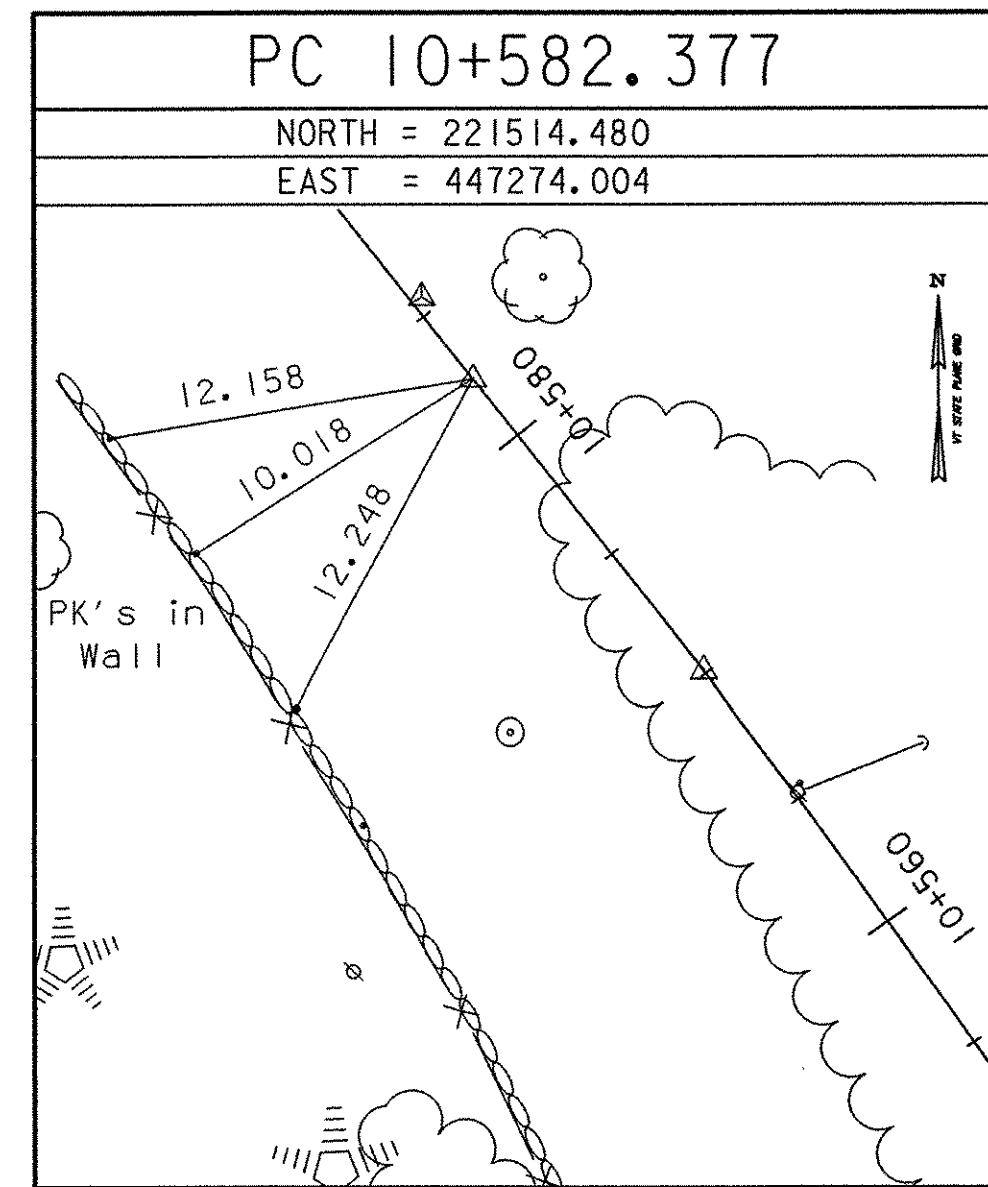
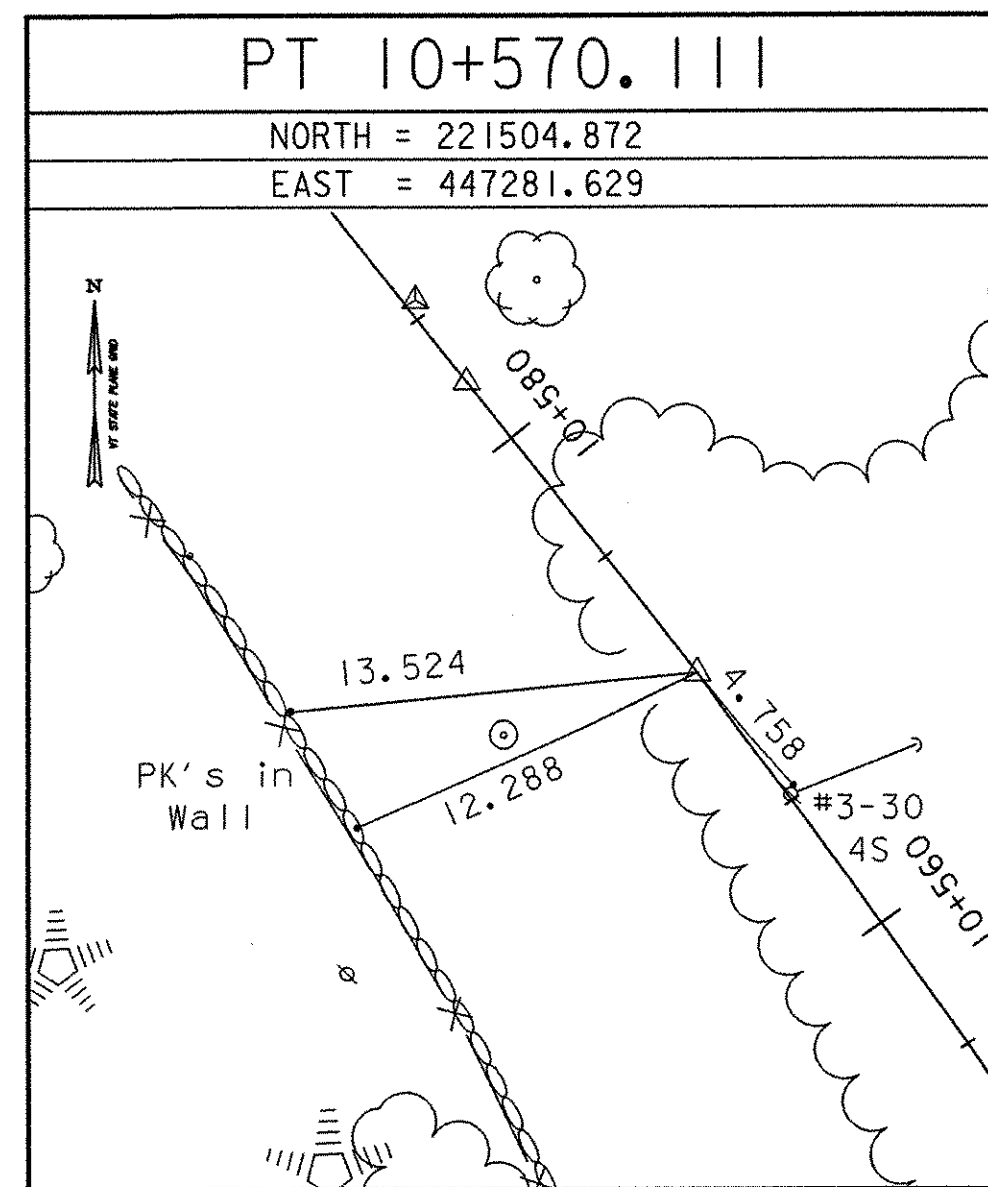
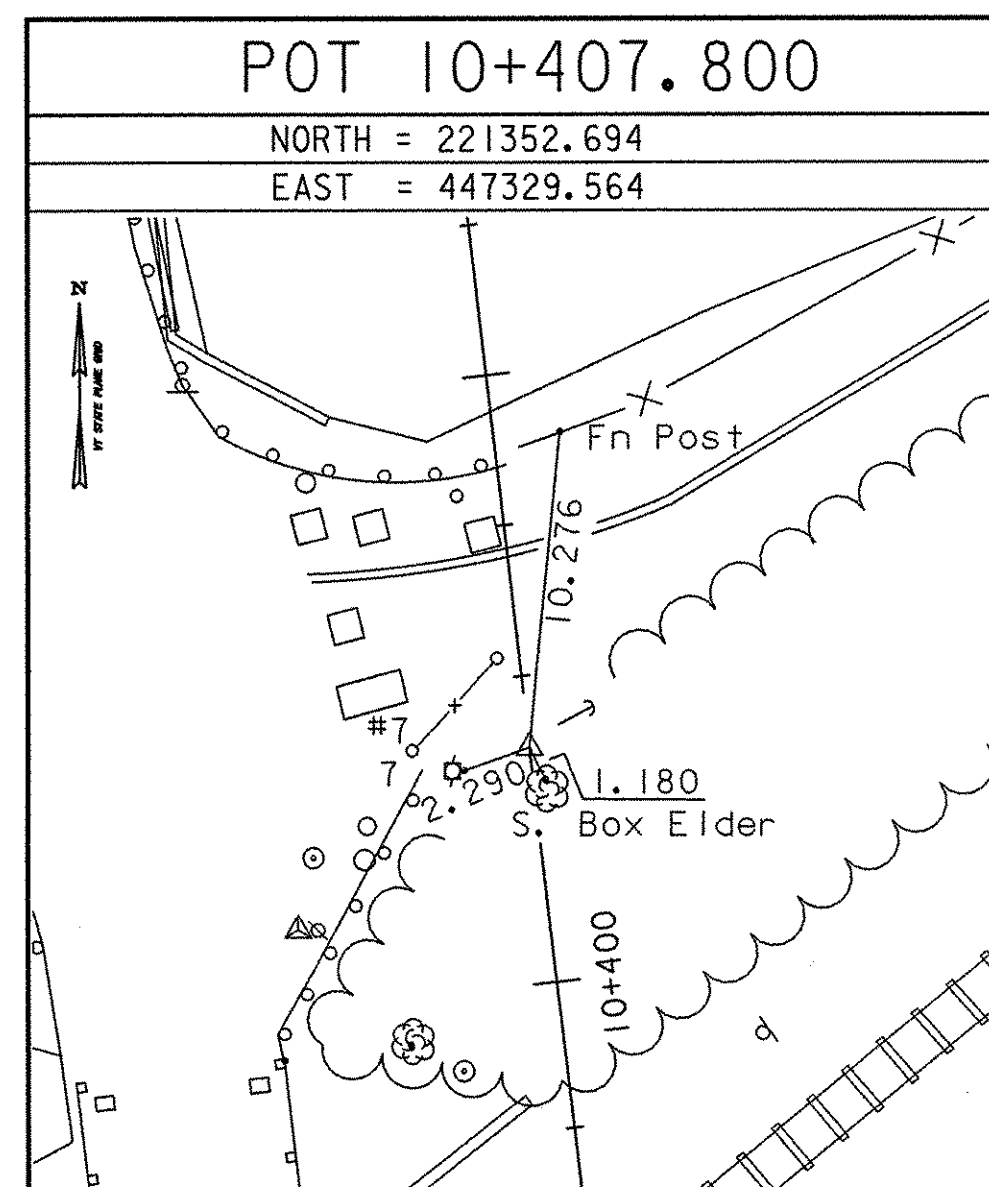
\* Main Traverse Completed 04/03/91 by J. Sheridan P.C. & R. Bullock revised 01/30/02 by L. Orvis P.C. & T. Wilson

ALIGNMENT TIES



\* Alignment Staked 04/03/91 by L. Orvis P.C. & T. Wilson

ALIGNMENT TIES



**STATE OF VERMONT  
 AGENCY OF TRANSPORTATION**

|                                       |                                |
|---------------------------------------|--------------------------------|
| Town Of COLCHESTER-SOUTH BURLINGTON   | Bridge No. 6                   |
| Highway No. TH 4/3                    | Log Sta. Surv. Sta.            |
| TH 4/3 OVER WINOOSKI RIVER & N.E.C.R. |                                |
| <b>TIE SHEET</b>                      |                                |
| Designed By VTRANS                    | Drawn By VTRANS                |
| Checked By VTRANS                     | Date 4/05                      |
| VTRANS Date 4/05                      |                                |
| PROJECT COLCHESTER-SOUTH BURLINGTON   | PROJECT NO. BRM 5600 (6) S C/2 |
| I.G.C. info.                          |                                |
| Bridge Sheet No. ZD139TIE             | Sheet 18 of 124                |

**DATUM**

|            |             |
|------------|-------------|
| VERTICAL   | NAVD 88     |
| HORIZONTAL | NAD 83 (92) |