

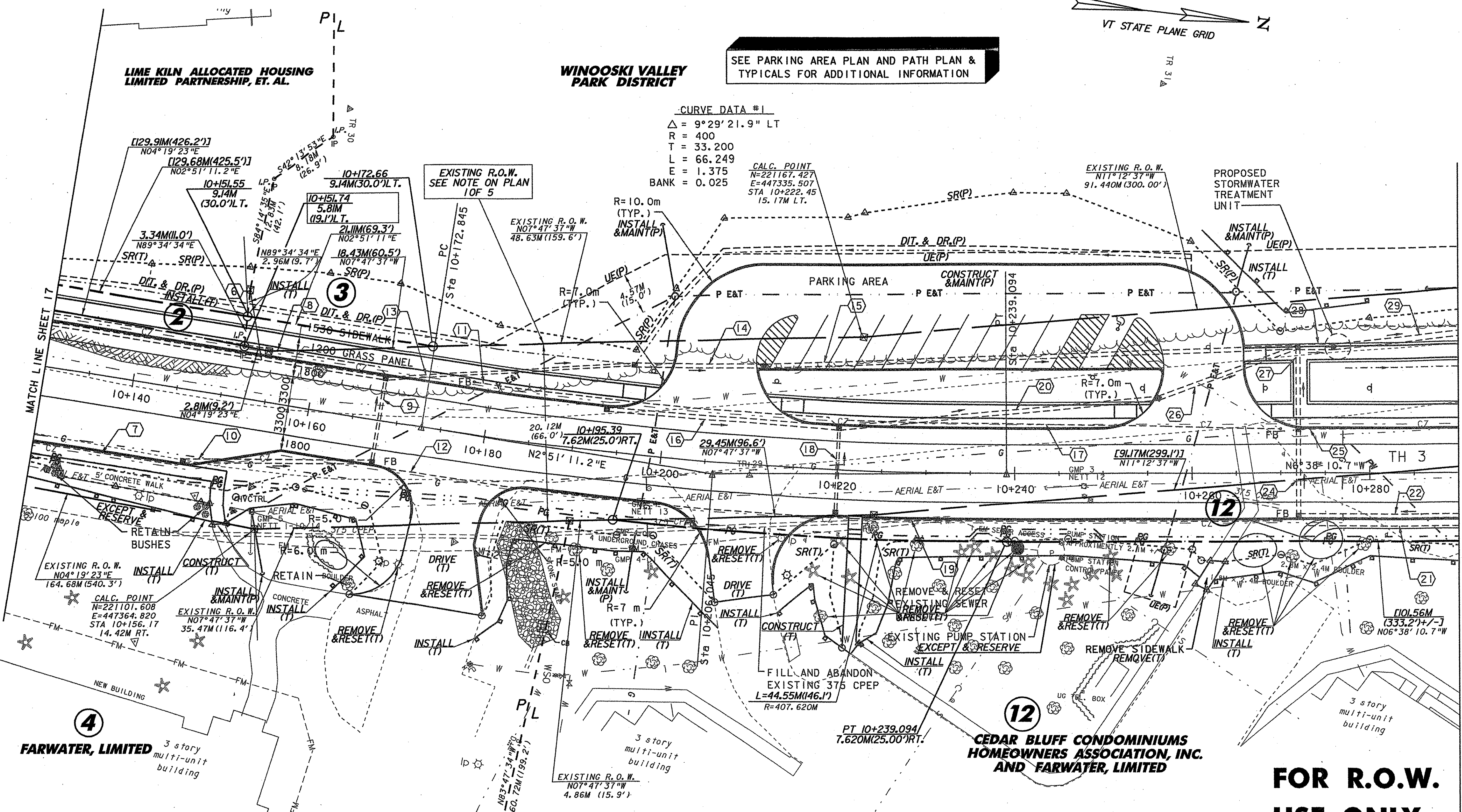


SEE PARKING AREA PLAN AND PATH PLAN & TYPICALS FOR ADDITIONAL INFORMATION

CURVE DATA #1
 $\Delta = 9^\circ 29' 21.9''$ LT
 $R = 400$
 $T = 33.200$
 $L = 66.249$
 $E = 1.375$
 $BANK = 0.025$

CALC. POINT
 $N = 221167.427$
 $E = 447335.507$
 $STA = 10+222.45$
 $15.17M$ LT.

EXISTING R.O.W.
 $N11^\circ 12' 37'' W$
 $91.440M (300.00')$

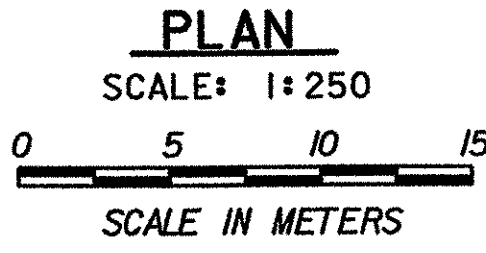


- CONSTRUCTION NOTES**
- CONSTRUCT SIDEWALK**
 STA 10+130.0 - STA 10+197.6, LT
 STA 10+130.0 - STA 10+151.0, RT
 STA 10+222.0 - STA 10+222.8, RT
 STA 10+212.4 - STA 10+254.6, LT
 STA 10+268.2 - STA 10+290.0, LT
- CONSTRUCT DRIVE**
 STA 10+177, RT
 50 BCP TYPE III, 7500 WIDE
- STA 10+205, LT
 40 BCP TYPE III,
 50 BCP TYPE II, 9000 WIDE
- STA 10+210, RT
 50 BCP TYPE III, 7600 WIDE
- STA 10+261, LT
 40 BCP TYPE III,
 50 BCP TYPE II, 9000 WIDE
- CONSTRUCT CONCRETE CURB**
 STA 10+130 - STA 10+173, RT
 STA 10+130 - STA 10+198, LT
 STA 10+182 - STA 10+206, RT
 STA 10+213 - STA 10+222, RT
 STA 10+213 - STA 10+254, LT
 STA 10+223 - STA 10+290, RT
 STA 10+269 - STA 10+290, LT
- CONSTRUCT SIDEWALK RAMP, TYPE I**
 (SEE STD. C-3M)
 STA 10+195.0 - STA 10+198.4, LT
 STA 10+212.4 - STA 10+215.8, LT
 STA 10+222, RT
 STA 10+251.3 - STA 10+254.6, LT
 STA 10+268.2 - STA 10+271.5, LT
 STA 10+265.9 - STA 10+268.4, LT
- STEEL BEAM GUARDRAIL**
 STA 10+268.3 - STA 10+290.0, RT
- ANCHOR FOR STEEL BEAM GUARDRAIL**
 STA 10+270.3, RT
- DURABLE 100 mm WHITE LINE**
 STA 10+130 - STA 10+290, LT & RT
- DURABLE 100 mm YELLOW LINE**
 (DOUBLE CENTER LINE)
 STA 10+130 - STA 10+290
- CONSTRUCT BUS PULLOUT**
 STA 10+130 - STA 10+147.8, RT 8.4 m
 STA 10+147.8, RT 8.4 m -
 STA 10+157.7, RT 5.1 m
- REMOVE EXISTING CURB**
 STA 10+130 - STA 10+160, RT
- REMOVE & RESET BOULDERS**
 STA 10+267, RT
 STA 10+274, RT
- REMOVE & RESET FRAME & COVER OF EXIST. SMH**
 STA 10+240, RT.

- LEGEND**
- UT — EXISTING UNDERGROUND TELEPHONE LINE
 - W — EXISTING UNDERGROUND WATER LINE
 - G — EXISTING UNDERGROUND GAS LINE
 - S — EXISTING UNDERGROUND SEWER LINE
 - AERIAL E&T — EXISTING OVERHEAD ELECTRIC & TELEPHONE LINE
 - FM — EXISTING FORCED MAIN SEWER LINE
 - SD — EXISTING STORM DRAIN
 - L — LEDGE
 - HYD — HYDRANT
 - — VALVE
 - — MANHOLE
 - ♣ — MAILBOX
 - 4 — SIGNS
 - — UTILITY POLE GUY WIRE
 - — GAS SHUTOFF
 - ♣ — LIGHT POLE
 - P E&T — PROPOSED OVERHEAD ELECTRIC & TELEPHONE BY OTHERS
 - PS — PROPOSED SEWER LINE
 - PG — PROPOSED GAS LINE BY OTHERS
 - PW — PROPOSED WATER LINE BY OTHERS
 - PB — PROPOSED PULL BOX BY OTHERS
 - FB — PROPOSED FLUSHING BASIN
 - — — — — TOP OF CUT TO MATCH EXISTING
 - — — — — TOE OF SLOPE TO MATCH EXISTING
 - ♣ — PROPOSED LIGHT POLE

- SIGN LEGEND**
- N = NEW
 - R = REMOVE
 - B-B = BACK-TO-BACK
 - RET = RETAIN
 - R & S = REMOVE AND RESET
 - R & N = REMOVE AND NEW
 - ① = RETURN TO CITY OF SO. BURLINGTON

SEE DRAINAGE AND SEWER NOTES & DETAILS ON SHEETS 13 & 14



FOR R.O.W. USE ONLY

REMOVE & RESET SHRUBS

- STA 10+189.0, RT 10.4 m
- STA 10+191.7, RT 11.3 m
- STA 10+217.7, RT 11.3 m
- STA 10+218.9, RT 16.4 m
- STA 10+220.4, RT 7.9 m
- STA 10+221.8, RT 11.8 m
- STA 10+224.1, RT 6.3 m
- STA 10+229.2, RT 8.1 m
- STA 10+234.0, RT 8.8 m
- STA 10+235.5, RT 8.2 m
- STA 10+237.5, RT 9.0 m
- STA 10+241.5, RT 9.8 m
- STA 10+250.8, RT 9.2 m
- STA 10+257.4, RT 8.3 m
- STA 10+271.3, RT 9.3 m
- STA 10+279.3, RT 7.9 m

REMOVE & RESET LIGHT POLES

- STA 10+172, RT TO 10+170.5, RT 15.5
- STA 10+214, RT TO 10+215, RT 12.0

STATE OF VERMONT AGENCY OF TRANSPORTATION

| | |
|-------------------------------------|---------------------|
| Town Of COLCHESTER-SOUTH BURLINGTON | Bridge No. 6 |
| Highway No. TH 4/3 | Log Sta. Surv. Sta. |

TH 4/3 OVER WINOOSKI RIVER & N.E.C.R.

PLAN (2 OF 5)

| | |
|---------------------------|------------------------------------|
| Designed By A.J. CRAWFORD | Drawn By C.S. MERCER |
| Checked By J.A. MERCER | Bridge Design Supervisor S.M. GUNN |
| Date 6/03 | Date 6/03 |

| | |
|-------------------------------------|--------------------------------|
| PROJECT COLCHESTER-SOUTH BURLINGTON | PROJECT NO. BRM 5600 (6) S C/2 |
|-------------------------------------|--------------------------------|

DATUM
 VERTICAL NAVD 88
 HORIZONTAL NAD 83 (92)

VANASSE HANGEN BRUSTLIN, INC.